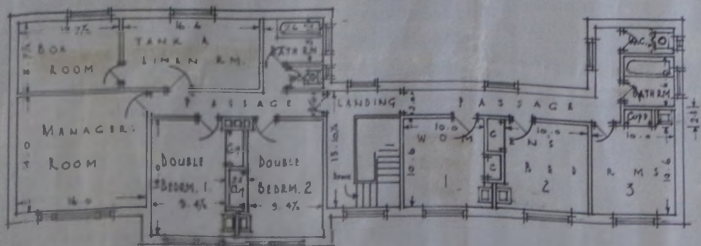
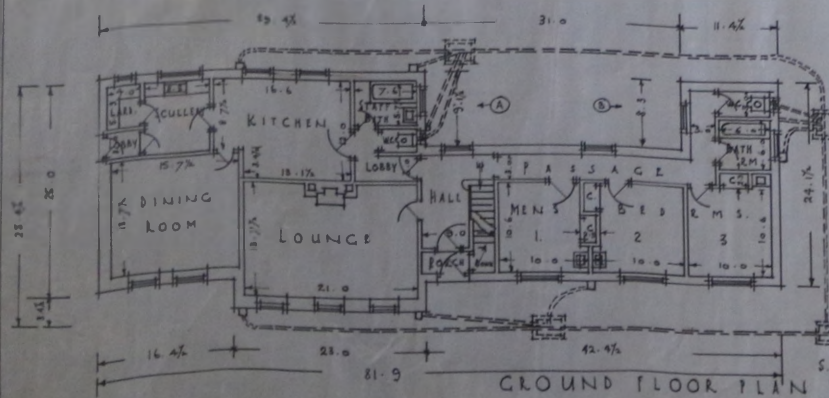


ROOF PLAN



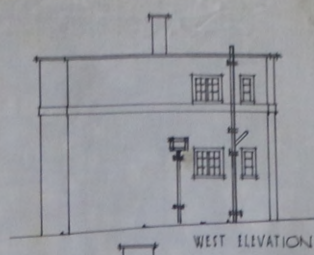
FIRST FLOOR PLAN



GROUND FLOOR PLAN



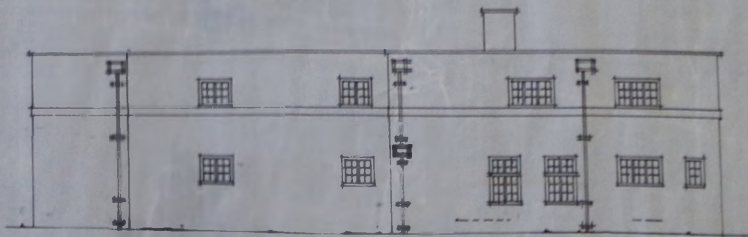
BASEMENT PLAN



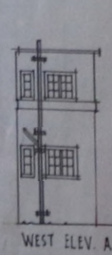
WEST ELEVATION



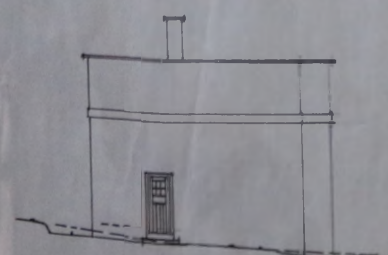
NORTH ELEVATION



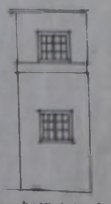
SOUTH ELEVATION



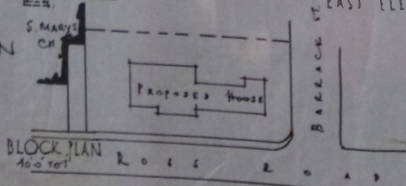
WEST ELEV. A



EAST ELEVATION



EAST ELEV. B



BLOCK PLAN
100' TO 1"

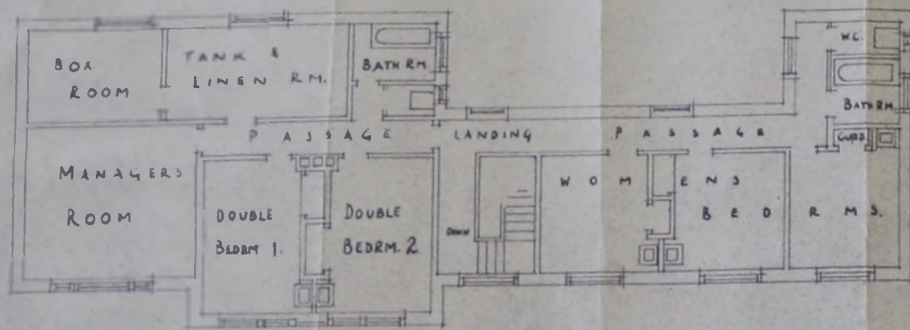
ALLARDYCE HOUSE (HOSTEL)
STANLEY P. IS.

SCALE: 1/8" = 1'

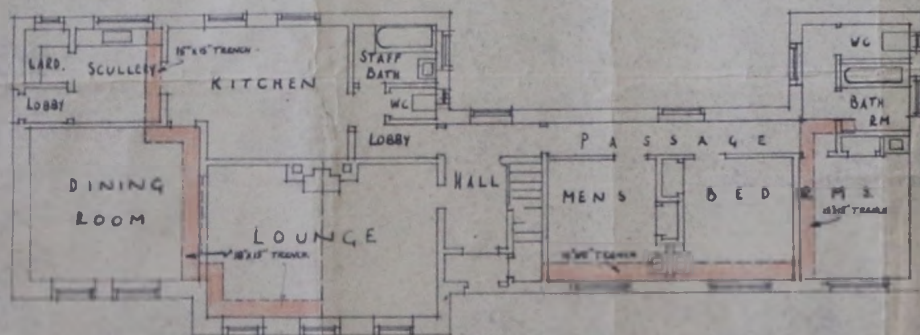
Drawn on 12" x 18" paper
FOR SECTION SET 1/8" DETAIL

Arthur L. ...

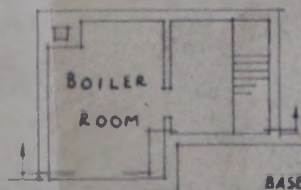
ALLARDYCE
STANLEY P. IS.
JULY 1947



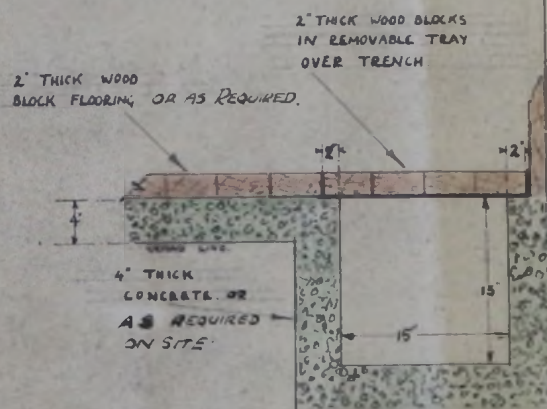
FIRST FLOOR PLAN



GROUND FLOOR PLAN

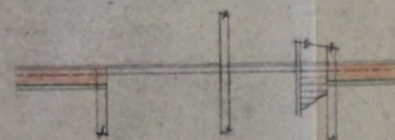


BASEMENT PLAN



TYPICAL SECTION OF 15' x 15' TRENCH.

SCALE: 1 1/2" = 1'-0"



SECTION THROUGH
BOILER HOUSE CEILING

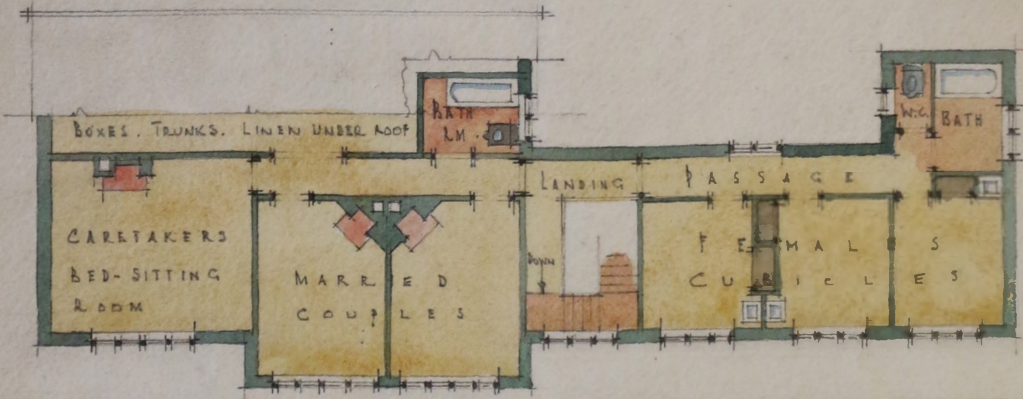
SCALE: 1/8" = 1'-0"

ALLARDYCE HOUSE.
DETAIL OF TRENCHES REQUIRED FOR HEATING INSTALLATION.

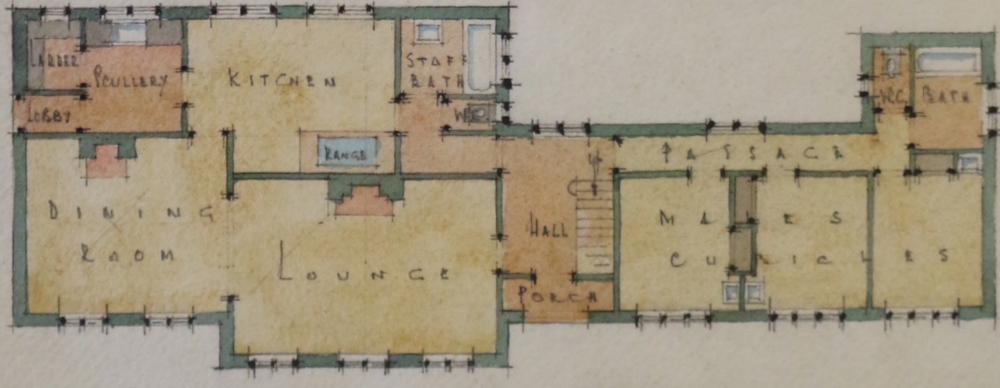
JOHN HEALING & ENGINEERING LTD
17, REGENT ST., LONDON, W.1.



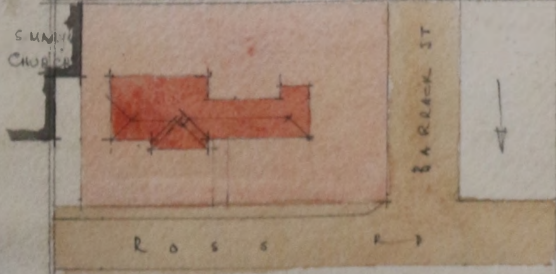
N O R T H E L E V A T I O N



F I R S T F L O O R P L A N

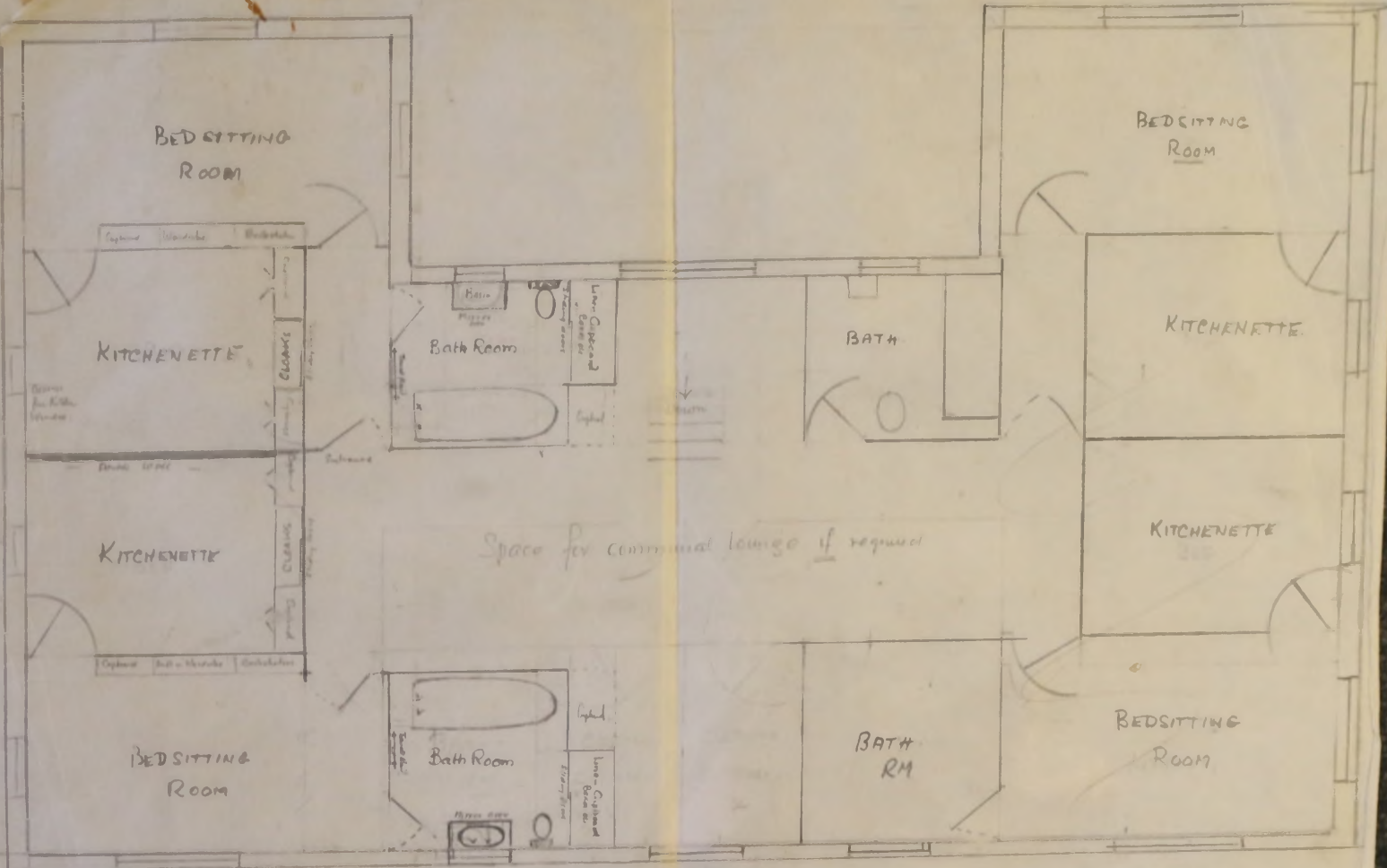


G R O U N D F L O O R P L A N



SKETCH PLANS
 PROPOSED HOSTEL
 STANLEY
 SCALE: 8.0" TO 1

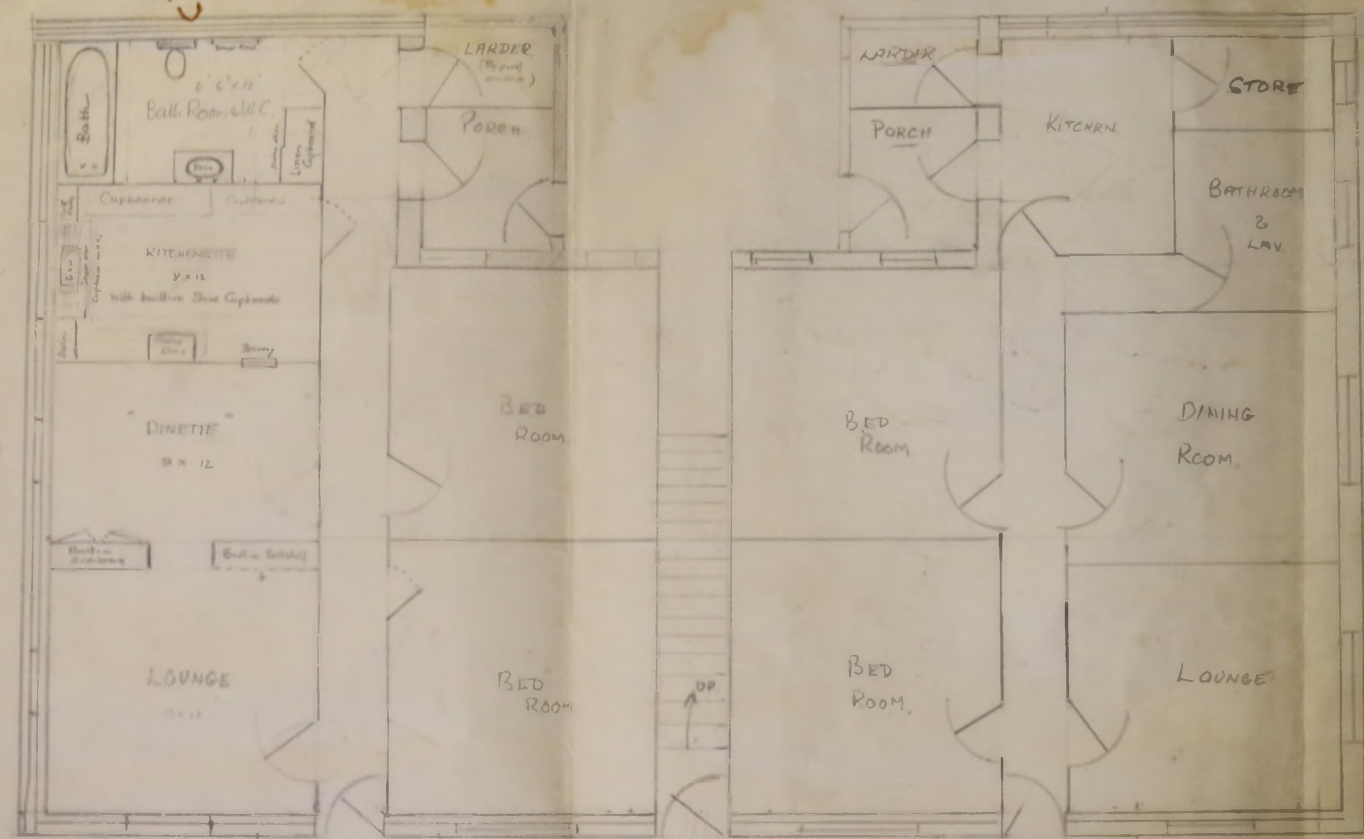
DESIGN FOR A HOSTEL FOR ACCOMODATION FOR SINGLE AND TEMPORARY GOVERNMENT EMPLOYEES DRAWN BY AUSTEN WOODGATE IN 1947. IT WAS PLANNED TO SITE THE BUILDING AT THE JUNCTION OF ROSS ROAD AND BARRACK STREET. THE PROJECT WAS EXTENSIVELY DISCUSSED IN COUNCIL, BUT EVENTUALLY ABANDONED IN 1954.



1ST FLOOR

West end.
Similar by

me
ME



East Side
West do. similarly

PORCH AND SUN LOUNGE
(I am not sure that this is really
practicable a necessity)
C-GROUND FLOOR
Spring doors

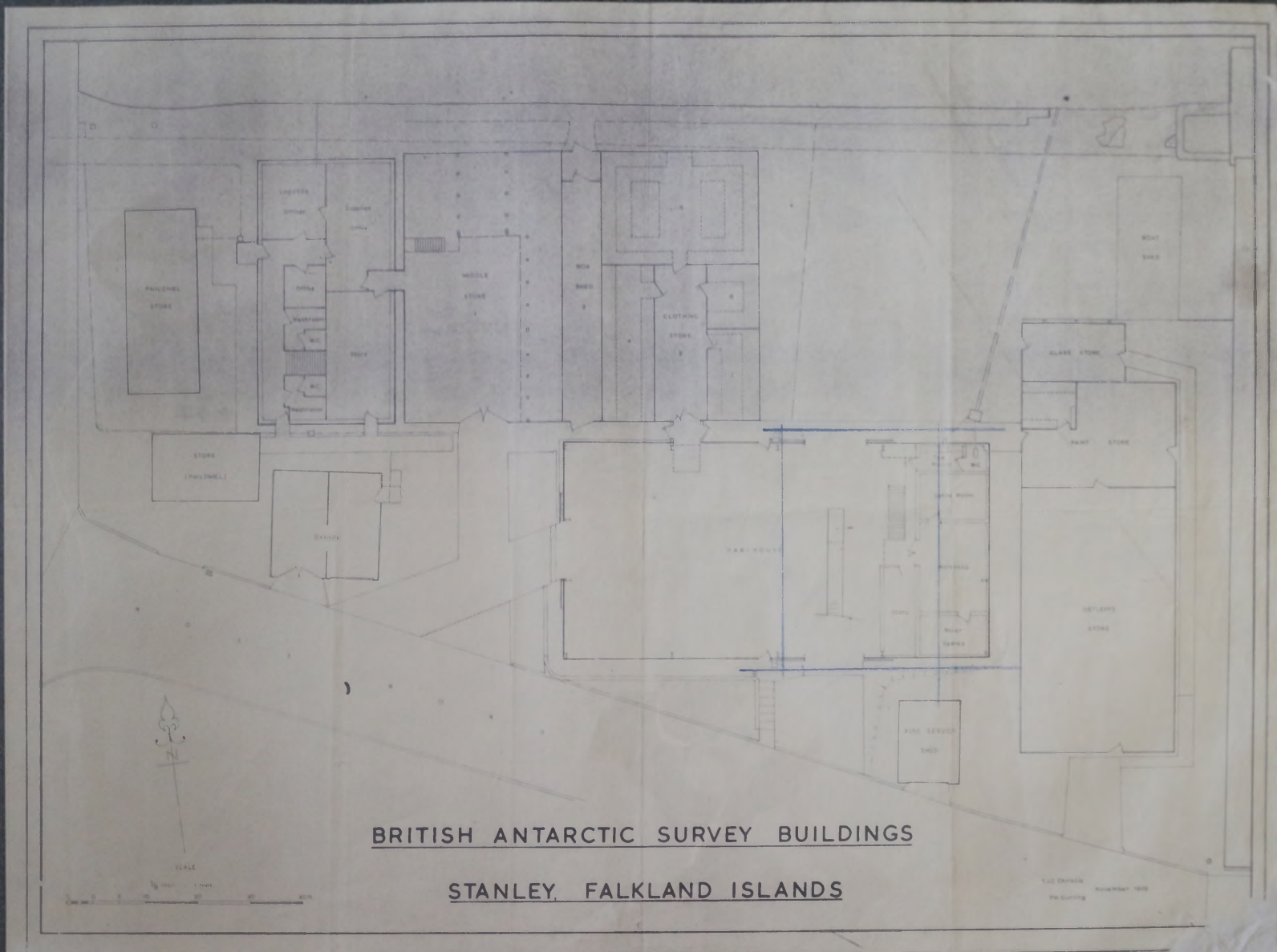
SCALE 1/4" = 1 FT

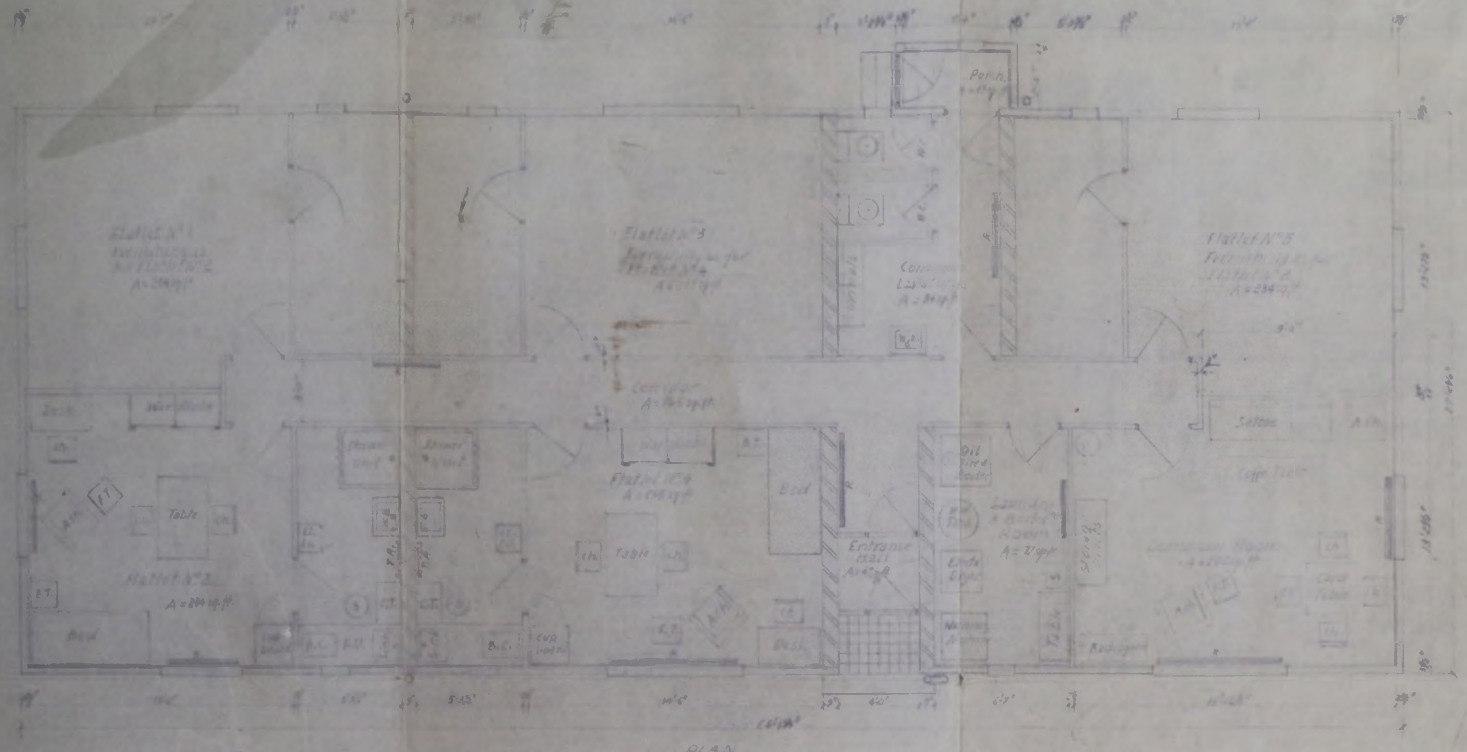
ESTIMATED COST OFF £7,000

ALLARDYCE HOUSE

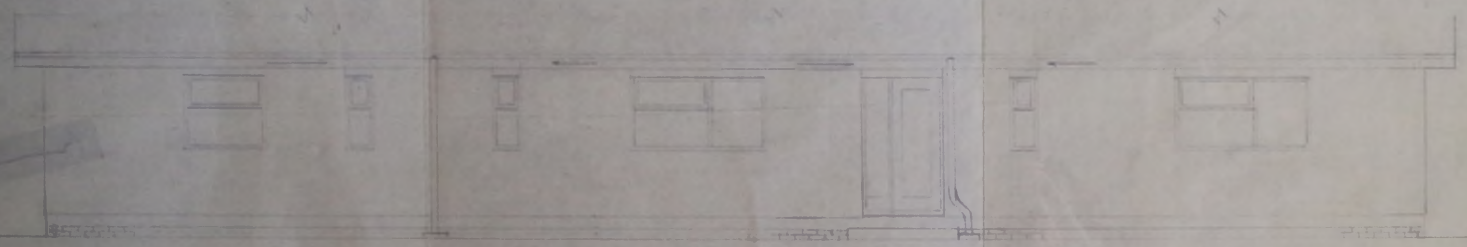
L40

ME
AE

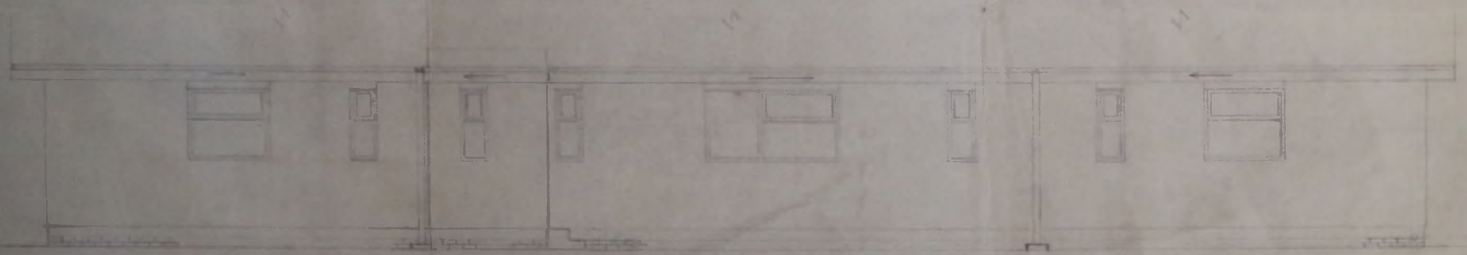




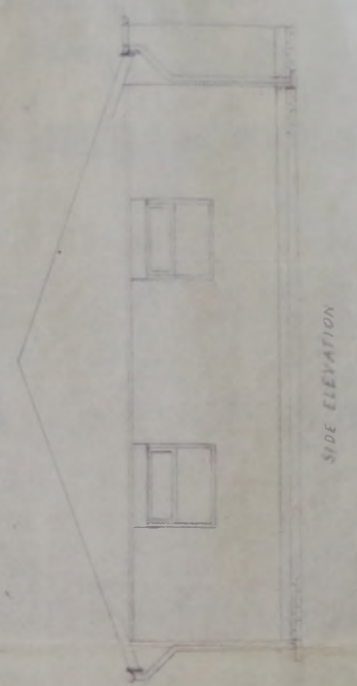
PLAN



FRONT ELEVATION



BACK ELEVATION



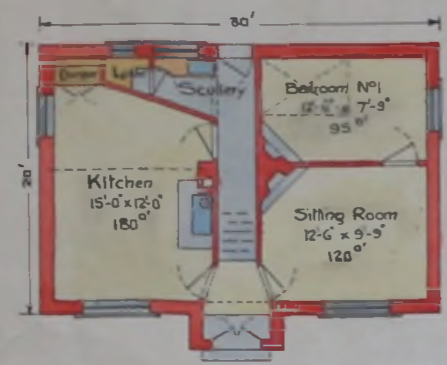
SIDE ELEVATION

BRITISH ANTARCTIC SURVEY
 FALKLAND ISLANDS

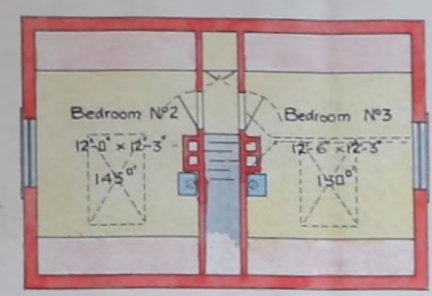
ACCOMODATION BUILDING
 GENERAL PLAN AND ELEVATIONS

CROWN AGENTS SCALE 1/2500
 6, RACE POINT ROAD

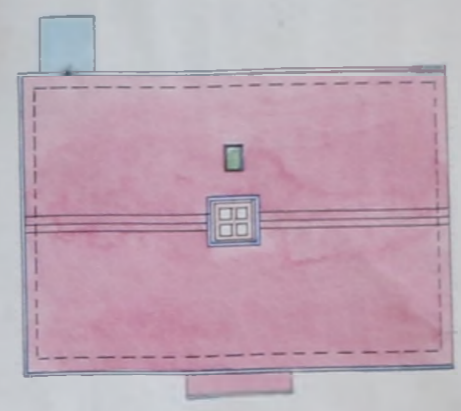
SKETCH FOR PROPOSED COTTAGE DWELLING



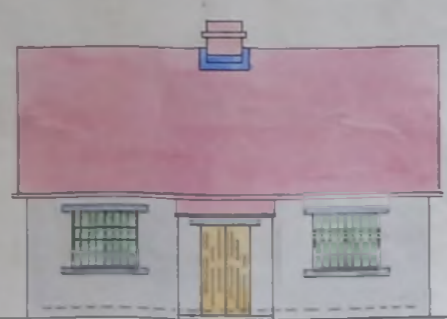
PLAN



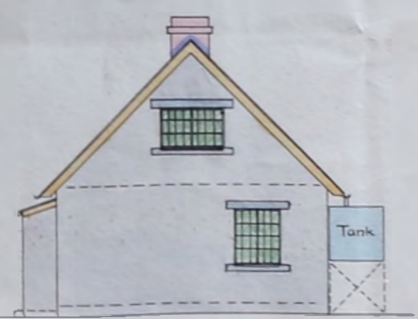
ATTIC PLAN



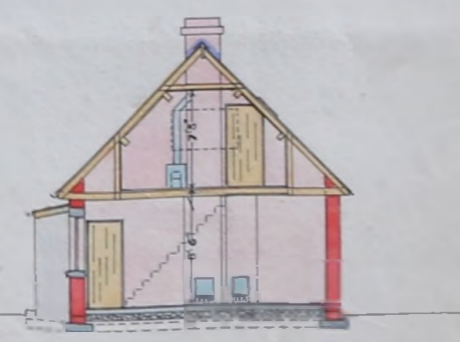
ROOF PLAN



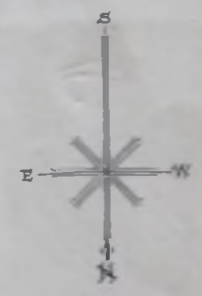
FRONT ELEVATION



END ELEVATION



CROSS SECTION



SCALE 8 FEET TO 1 INCH



NOTE

Detached Fuel Shed and E.C. not indicated on plan

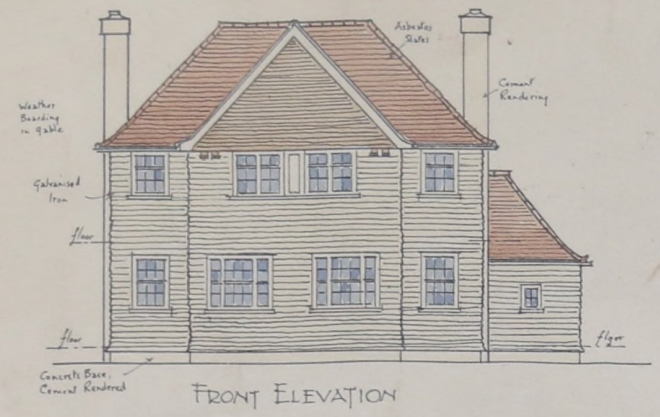
CONSTRUCTION

External Walls of local Stone with random joints in P.C. Cement with Damp proof course of 'Callenrite' Internal Walls and partitions 4 1/2 brick or timber framing: Lining to walls + ceilings of 'Beaver Board' Roof corrugated iron with pressed steel gutters + down pipes: 1" boarding + felt lining under corrug iron. Chimneys brick or P.C. Concrete blocks: Sills + lintels and jambs + quoins P.C. Concrete Windows standard Steel Casements with top opening fanlights Doors imported standard doors: Stairheads P.C. Concrete Woodwork painted externally and stained with Solignum internally Footings P.C. Concrete: 4' hardcore + 4' P.C. Concrete under floor

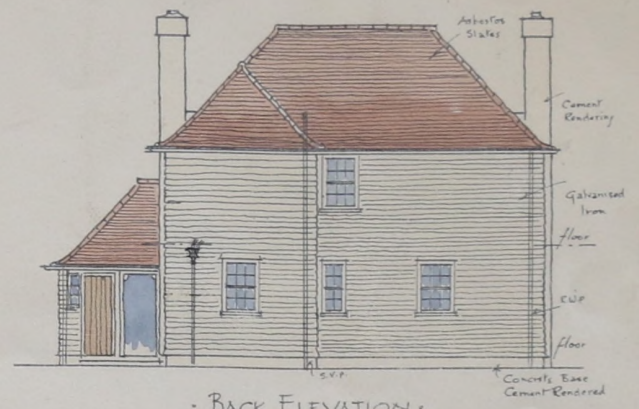
PROPOSED HOUSE AT PORT STANLEY
FALKLAND ISLANDS

DRAWING No 2

TYPE "B"
SCALE 1/8" = 1 FOOT



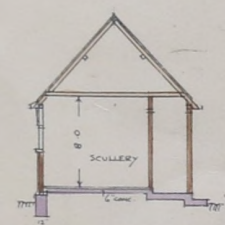
FRONT ELEVATION



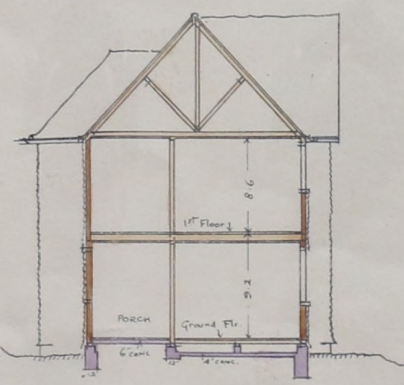
BACK ELEVATION



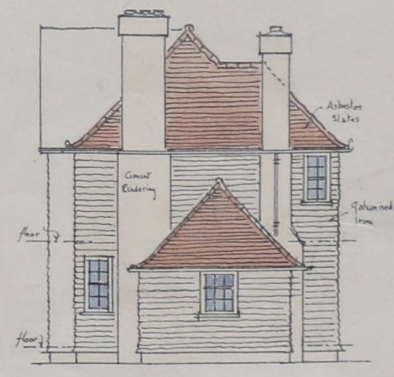
EAST SIDE



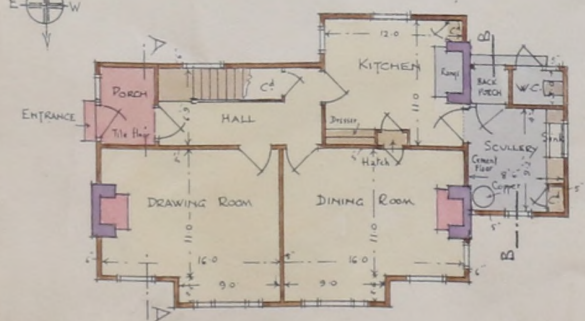
SECTION B-B



SECTION A-A

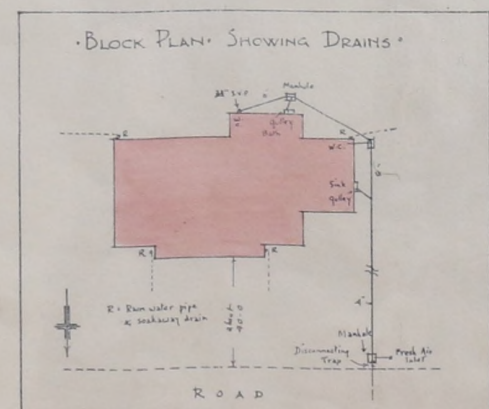


WEST SIDE



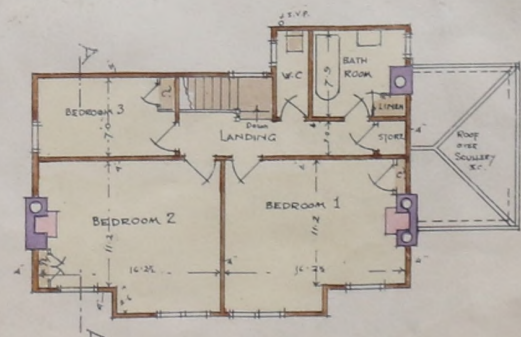
GROUND FLOOR PLAN

SCALE 1/8 INCH = 1 FOOT



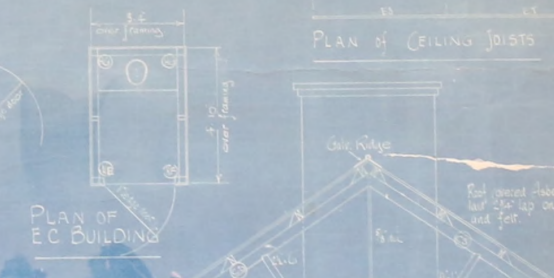
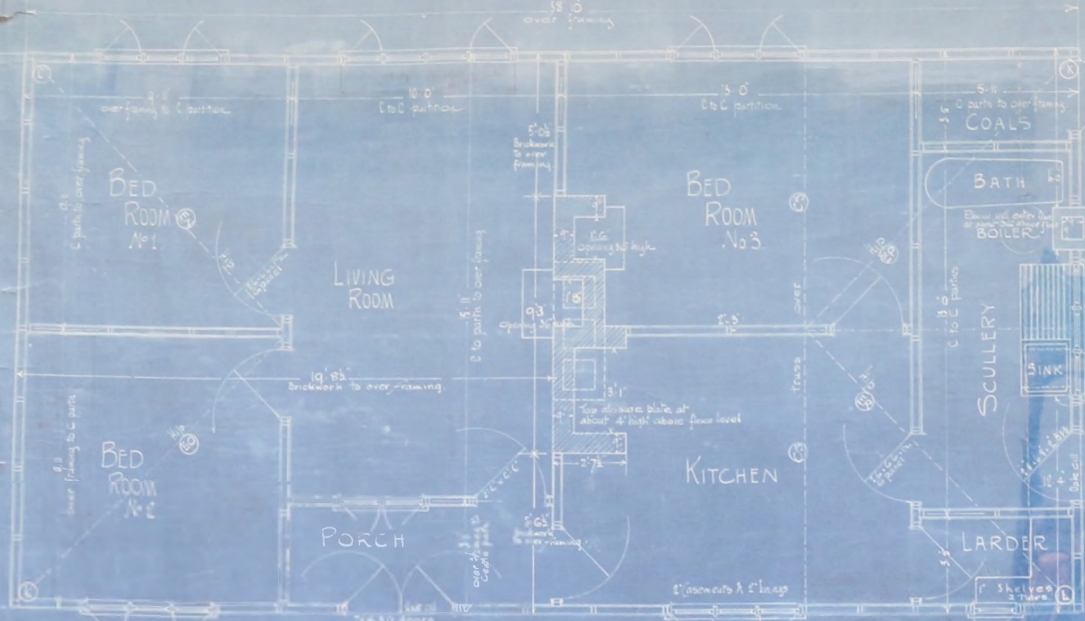
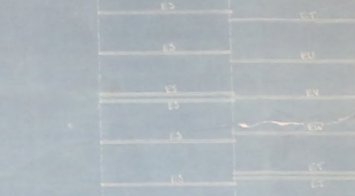
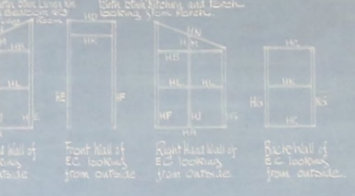
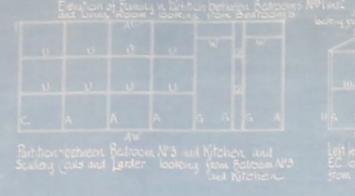
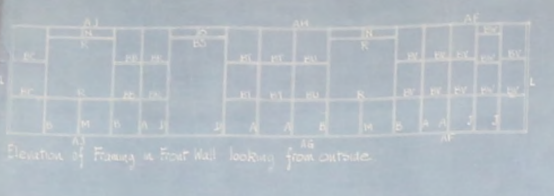
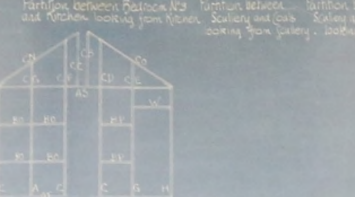
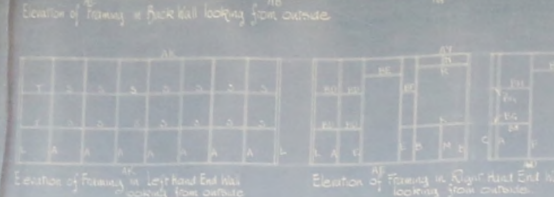
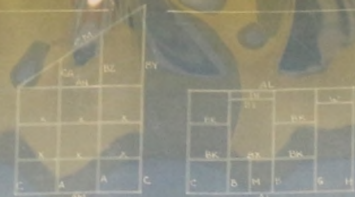
BLOCK PLAN SHOWING DRAINS

SCALE 1/8 INCH = 1 FOOT

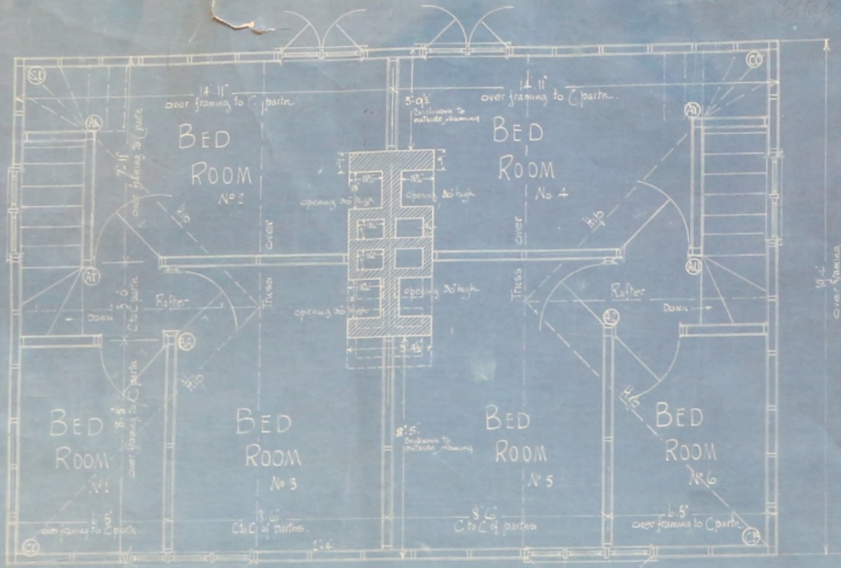


FIRST FLOOR PLAN

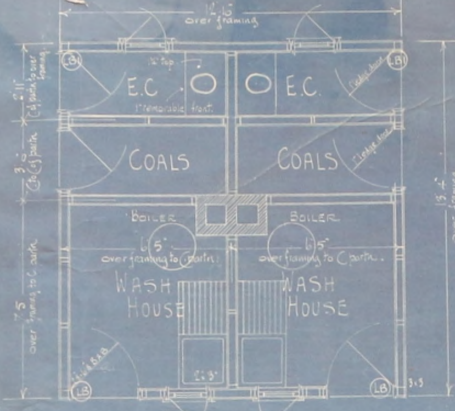
8(1)



See also Drawing No XC 36/2 for details of foundations

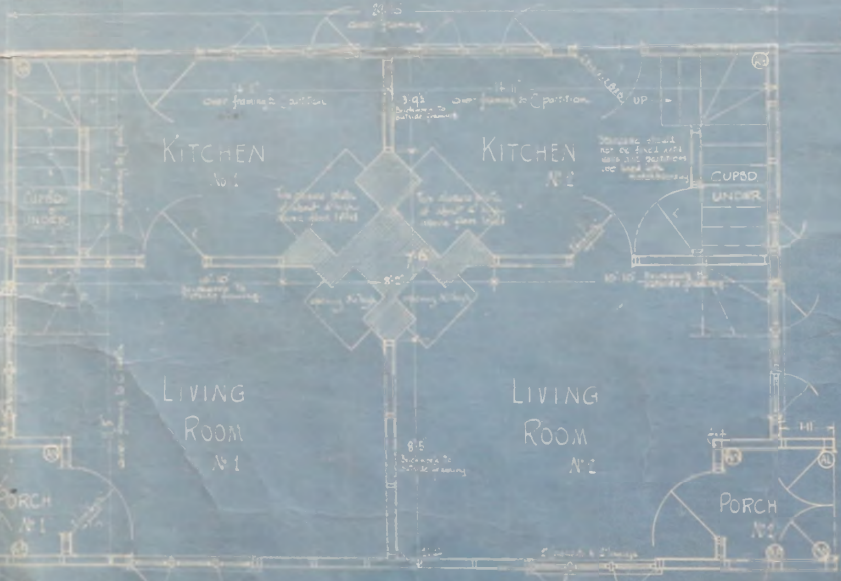


FIRST FLOOR PLAN

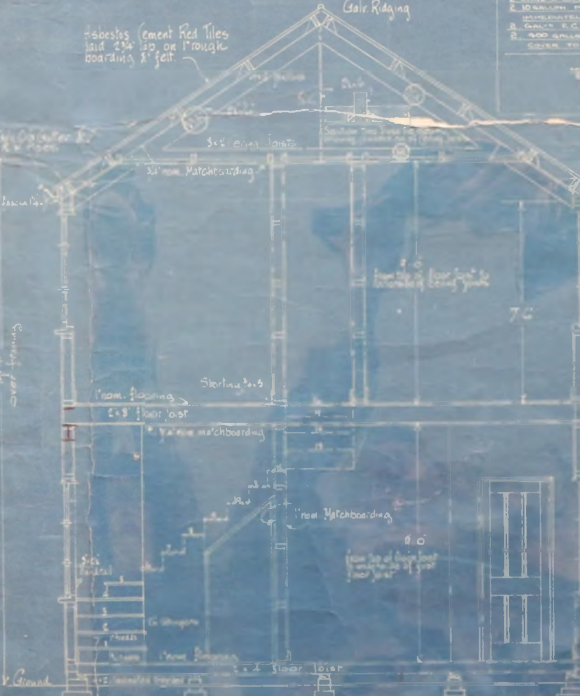


PLAN OF OUTHOUSES

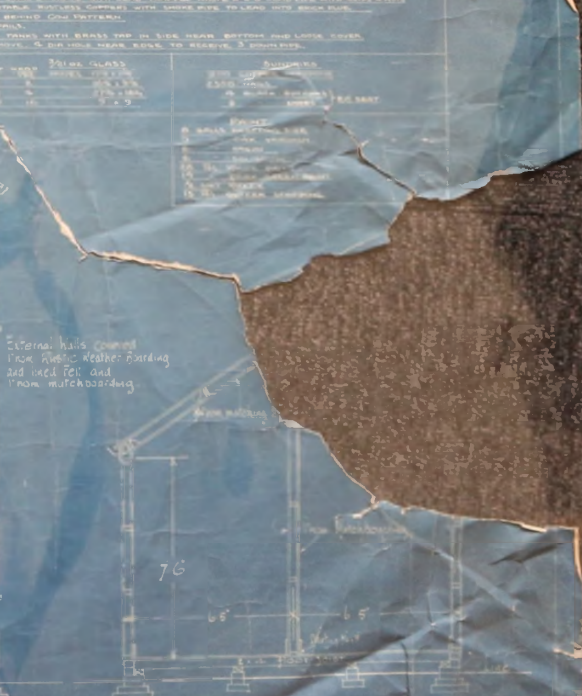
- IRONmongery**
- 1. 6" JOIST BRACKET, BRASS, WITH NUTS.
 - 2. 2" SQUARE BRACKET, BRASS, WITH NUTS, BRASS, BRASS, WITH NUTS.
 - 3. 2" x 2" BRACKET, BRASS, WITH NUTS, BRASS, BRASS, WITH NUTS.
 - 4. 2" x 2" BRACKET, BRASS, WITH NUTS, BRASS, BRASS, WITH NUTS.
 - 5. 2" x 2" BRACKET, BRASS, WITH NUTS, BRASS, BRASS, WITH NUTS.
 - 6. 2" x 2" BRACKET, BRASS, WITH NUTS, BRASS, BRASS, WITH NUTS.
 - 7. 2" x 2" BRACKET, BRASS, WITH NUTS, BRASS, BRASS, WITH NUTS.
 - 8. 2" x 2" BRACKET, BRASS, WITH NUTS, BRASS, BRASS, WITH NUTS.
 - 9. 2" x 2" BRACKET, BRASS, WITH NUTS, BRASS, BRASS, WITH NUTS.
 - 10. 2" x 2" BRACKET, BRASS, WITH NUTS, BRASS, BRASS, WITH NUTS.
 - 11. 2" x 2" BRACKET, BRASS, WITH NUTS, BRASS, BRASS, WITH NUTS.
 - 12. 2" x 2" BRACKET, BRASS, WITH NUTS, BRASS, BRASS, WITH NUTS.
 - 13. 2" x 2" BRACKET, BRASS, WITH NUTS, BRASS, BRASS, WITH NUTS.
 - 14. 2" x 2" BRACKET, BRASS, WITH NUTS, BRASS, BRASS, WITH NUTS.
 - 15. 2" x 2" BRACKET, BRASS, WITH NUTS, BRASS, BRASS, WITH NUTS.
 - 16. 2" x 2" BRACKET, BRASS, WITH NUTS, BRASS, BRASS, WITH NUTS.
 - 17. 2" x 2" BRACKET, BRASS, WITH NUTS, BRASS, BRASS, WITH NUTS.
 - 18. 2" x 2" BRACKET, BRASS, WITH NUTS, BRASS, BRASS, WITH NUTS.
 - 19. 2" x 2" BRACKET, BRASS, WITH NUTS, BRASS, BRASS, WITH NUTS.
 - 20. 2" x 2" BRACKET, BRASS, WITH NUTS, BRASS, BRASS, WITH NUTS.
 - 21. 2" x 2" BRACKET, BRASS, WITH NUTS, BRASS, BRASS, WITH NUTS.
 - 22. 2" x 2" BRACKET, BRASS, WITH NUTS, BRASS, BRASS, WITH NUTS.
 - 23. 2" x 2" BRACKET, BRASS, WITH NUTS, BRASS, BRASS, WITH NUTS.
 - 24. 2" x 2" BRACKET, BRASS, WITH NUTS, BRASS, BRASS, WITH NUTS.
 - 25. 2" x 2" BRACKET, BRASS, WITH NUTS, BRASS, BRASS, WITH NUTS.
 - 26. 2" x 2" BRACKET, BRASS, WITH NUTS, BRASS, BRASS, WITH NUTS.
 - 27. 2" x 2" BRACKET, BRASS, WITH NUTS, BRASS, BRASS, WITH NUTS.
 - 28. 2" x 2" BRACKET, BRASS, WITH NUTS, BRASS, BRASS, WITH NUTS.
 - 29. 2" x 2" BRACKET, BRASS, WITH NUTS, BRASS, BRASS, WITH NUTS.
 - 30. 2" x 2" BRACKET, BRASS, WITH NUTS, BRASS, BRASS, WITH NUTS.
 - 31. 2" x 2" BRACKET, BRASS, WITH NUTS, BRASS, BRASS, WITH NUTS.
 - 32. 2" x 2" BRACKET, BRASS, WITH NUTS, BRASS, BRASS, WITH NUTS.
 - 33. 2" x 2" BRACKET, BRASS, WITH NUTS, BRASS, BRASS, WITH NUTS.
 - 34. 2" x 2" BRACKET, BRASS, WITH NUTS, BRASS, BRASS, WITH NUTS.
 - 35. 2" x 2" BRACKET, BRASS, WITH NUTS, BRASS, BRASS, WITH NUTS.
 - 36. 2" x 2" BRACKET, BRASS, WITH NUTS, BRASS, BRASS, WITH NUTS.
 - 37. 2" x 2" BRACKET, BRASS, WITH NUTS, BRASS, BRASS, WITH NUTS.
 - 38. 2" x 2" BRACKET, BRASS, WITH NUTS, BRASS, BRASS, WITH NUTS.
 - 39. 2" x 2" BRACKET, BRASS, WITH NUTS, BRASS, BRASS, WITH NUTS.
 - 40. 2" x 2" BRACKET, BRASS, WITH NUTS, BRASS, BRASS, WITH NUTS.
 - 41. 2" x 2" BRACKET, BRASS, WITH NUTS, BRASS, BRASS, WITH NUTS.
 - 42. 2" x 2" BRACKET, BRASS, WITH NUTS, BRASS, BRASS, WITH NUTS.
 - 43. 2" x 2" BRACKET, BRASS, WITH NUTS, BRASS, BRASS, WITH NUTS.
 - 44. 2" x 2" BRACKET, BRASS, WITH NUTS, BRASS, BRASS, WITH NUTS.
 - 45. 2" x 2" BRACKET, BRASS, WITH NUTS, BRASS, BRASS, WITH NUTS.
 - 46. 2" x 2" BRACKET, BRASS, WITH NUTS, BRASS, BRASS, WITH NUTS.
 - 47. 2" x 2" BRACKET, BRASS, WITH NUTS, BRASS, BRASS, WITH NUTS.
 - 48. 2" x 2" BRACKET, BRASS, WITH NUTS, BRASS, BRASS, WITH NUTS.
 - 49. 2" x 2" BRACKET, BRASS, WITH NUTS, BRASS, BRASS, WITH NUTS.
 - 50. 2" x 2" BRACKET, BRASS, WITH NUTS, BRASS, BRASS, WITH NUTS.



GROUND FLOOR PLAN



CROSS SECTION

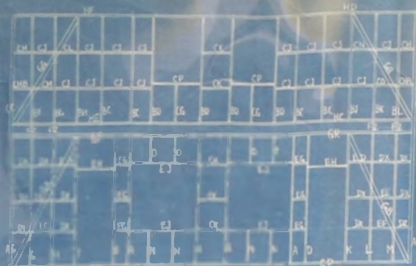


CROSS SECTION

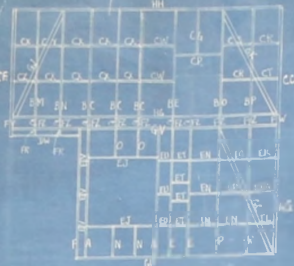
SCALE 1/2" = 1 FOOT

SEE ALSO DRAWING NO. XC361A1

BOLTON & PAUL LTD
DRAWING NO. XC361A1
1923



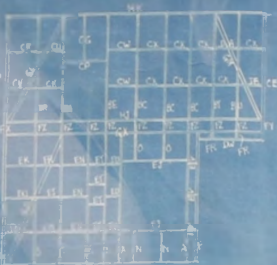
Elevation of Framing in Back Wall looking from outside



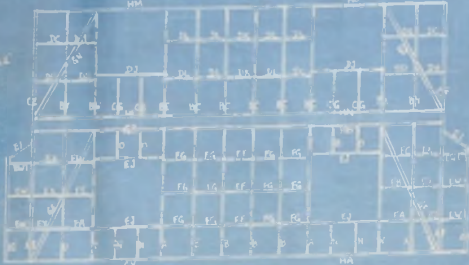
Elevation of Framing in Right hand End Wall looking from outside



Partitions between various rooms including bedrooms and living areas



Elevation of Framing in Left hand End Wall looking from outside



Elevation of Framing in Front Wall looking from outside



Partitions between living room, dining room, and kitchen



Partitions between kitchen, utility, and bathroom areas



Front side Wall of Outhouse looking from outside



Rear side Wall of Outhouse looking from outside



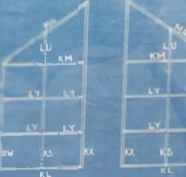
Left hand Wall of Outhouse looking from outside



Right hand Wall of Outhouse looking from outside



Partitions between outhouse and main building



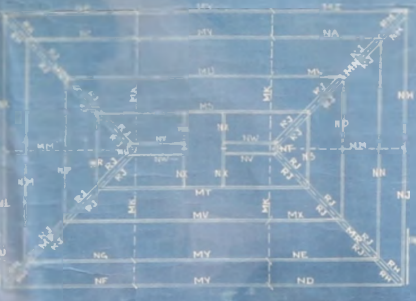
Partitions between outhouse and main building



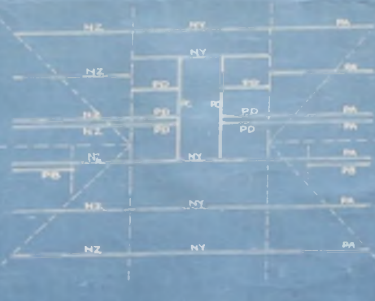
Partitions between outhouse and main building



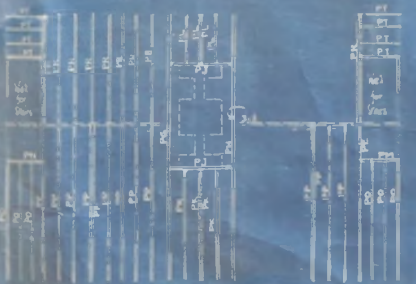
Partitions between outhouse and main building



PLAN of ROOF BURLINS

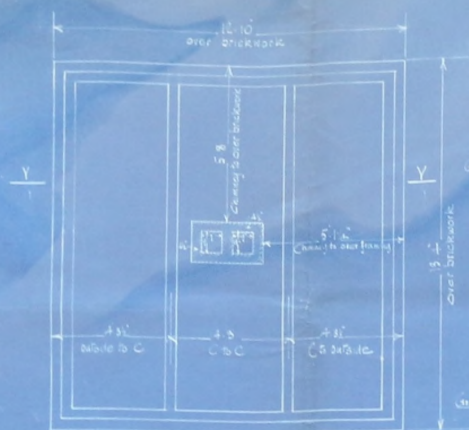


PLAN of CEILING JOISTS



PLAN of FIRST FLOOR JOISTS

Plan of Roof Plates to Outhouse



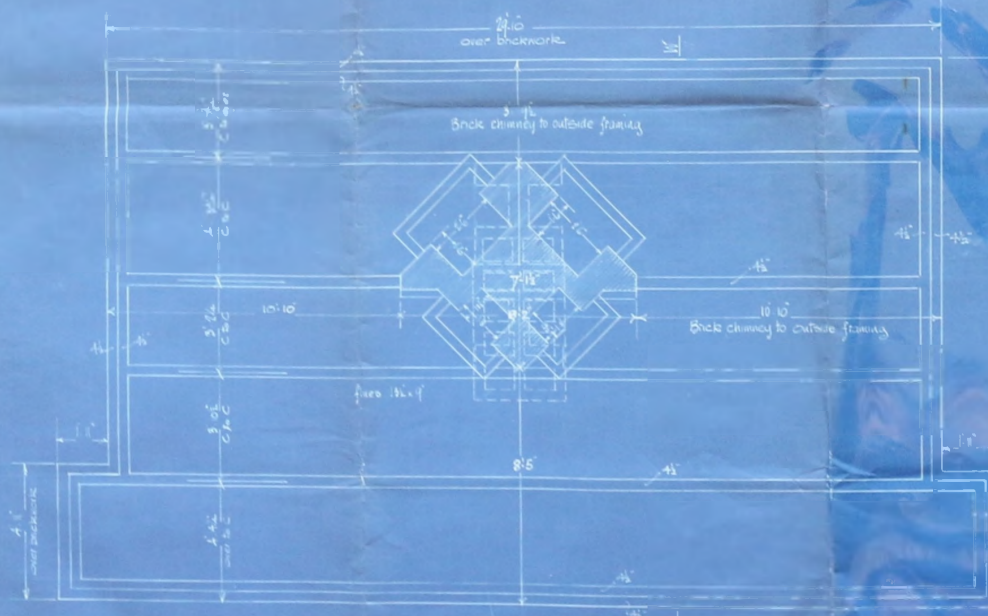
PLAN OF OUTHOUSE FOUNDATIONS



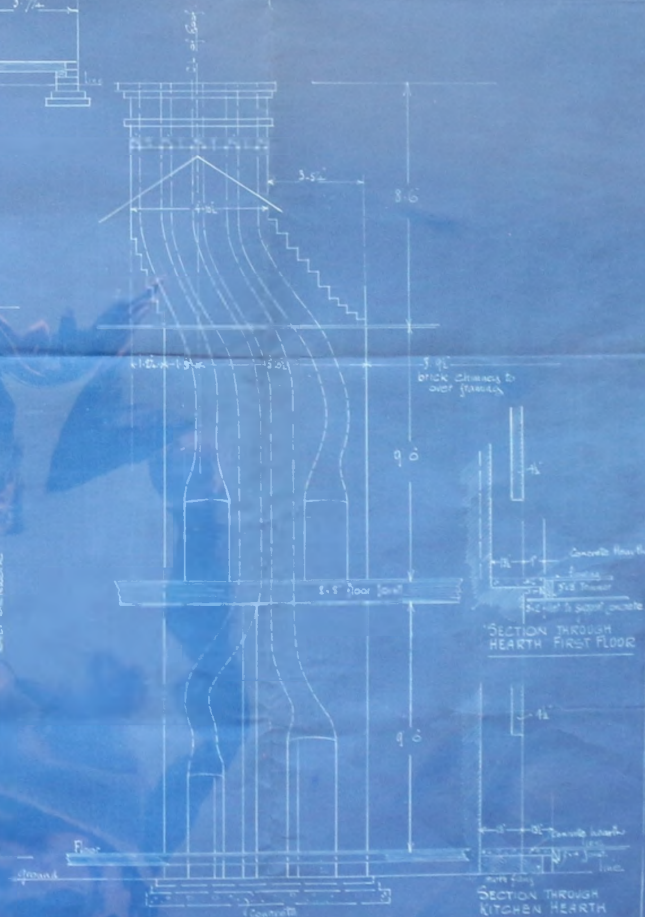
CROSS SECTION Y-Y



CROSS SECTION W-W



PLAN OF FOUNDATIONS



ELEVATION OF CHIMNEY

THE ROOF BOARDING TO BE FIXED AS SHOWN
I.E. FROM RIDGE TO EAVES, & NAILED TO PURLINS

FIG 1
PLAN

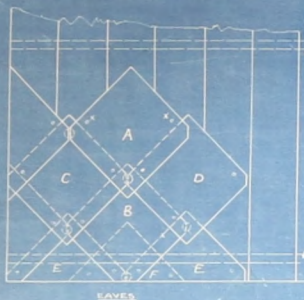


FIG 2

SHOWING METHOD OF
CUTTING TILES AT EAVES, ETC.
ROOF COURSE AT EAVES MUST ALWAYS
BE WILD AND SLATED FOR THIS PURPOSE
AND CUT BY MARKING WITH A SQUARE INSTRUMENT
AND BREAKING OVER A STRAIGHT EDGE.

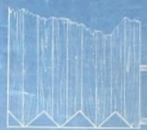


ILLUSTRATION SHOWING THE
SECTION THROUGH THE
EAVES COURSE THE POINT OF
WILDING BEING MARKED



ILLUSTRATION SHOWING THE FULL SIZE SLATE
FIXED IN POSITION. THIS IS ASSISTED BY
MEANS OF A COPPER CRAMPON AND TWO
NAILS. THE JOINT OF THE CRAMPON IS
MARKED BETWEEN THE BUTTED EDGES
RESTING UPON THE LOWER SLATE. THE END
PROJECTS UPWARDS AND THE SLATE IS LAPPED
THERE UPON AS SHOWN. THE END OF THE CRAMPON
PUSHES THROUGH THE HOLE AT THE POINT
OF THE SLATE, AND BEING OVERLAPPED
WITH A SLIGHT LAP OF THE HAMMER, THE
CRAMPON IS SECURED BY BEATING THE
SLATE AND LINE SECURELY THROUGH THE JOINT
TO THE BOARDING.



TWO ILLUSTRATION SHOWS PROGRESS THROUGH
COMPLETING THE ROOF IN THE MANNER STATED.
THE SECTION OF FINISH FROM RIDGE TO EAVES
A REPRODUCTION OF THE INSTRUCTIONS GIVEN
CAN NOT BE EXCEEDED AS THAT ALL THE
CRAMPONS ARE KEPT OVER THE BOARDING
IN EACH DIAGONAL LINE UP THE SLOPE
OF THE ROOF.

NAILS MUST NOT BE DRIVEN TOO WELL HOME
ON THE EDGES OF THE SLATES WILL WARP.
TILES TO BE LAID TO LAP

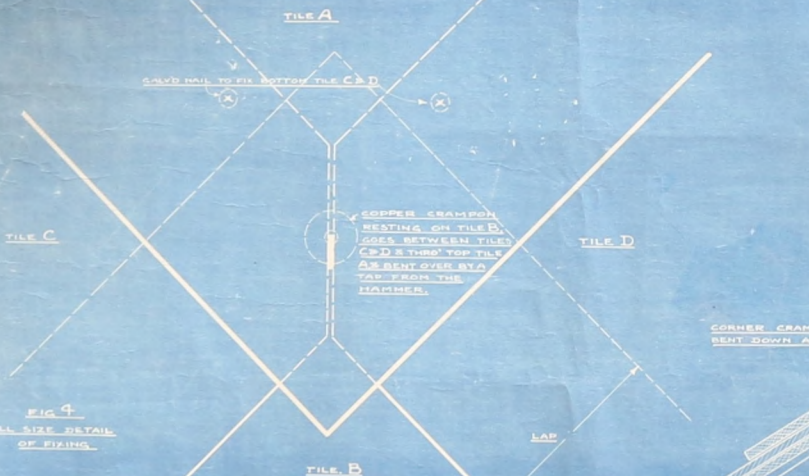


FIG 4
FULL SIZE DETAIL
OF FIXING

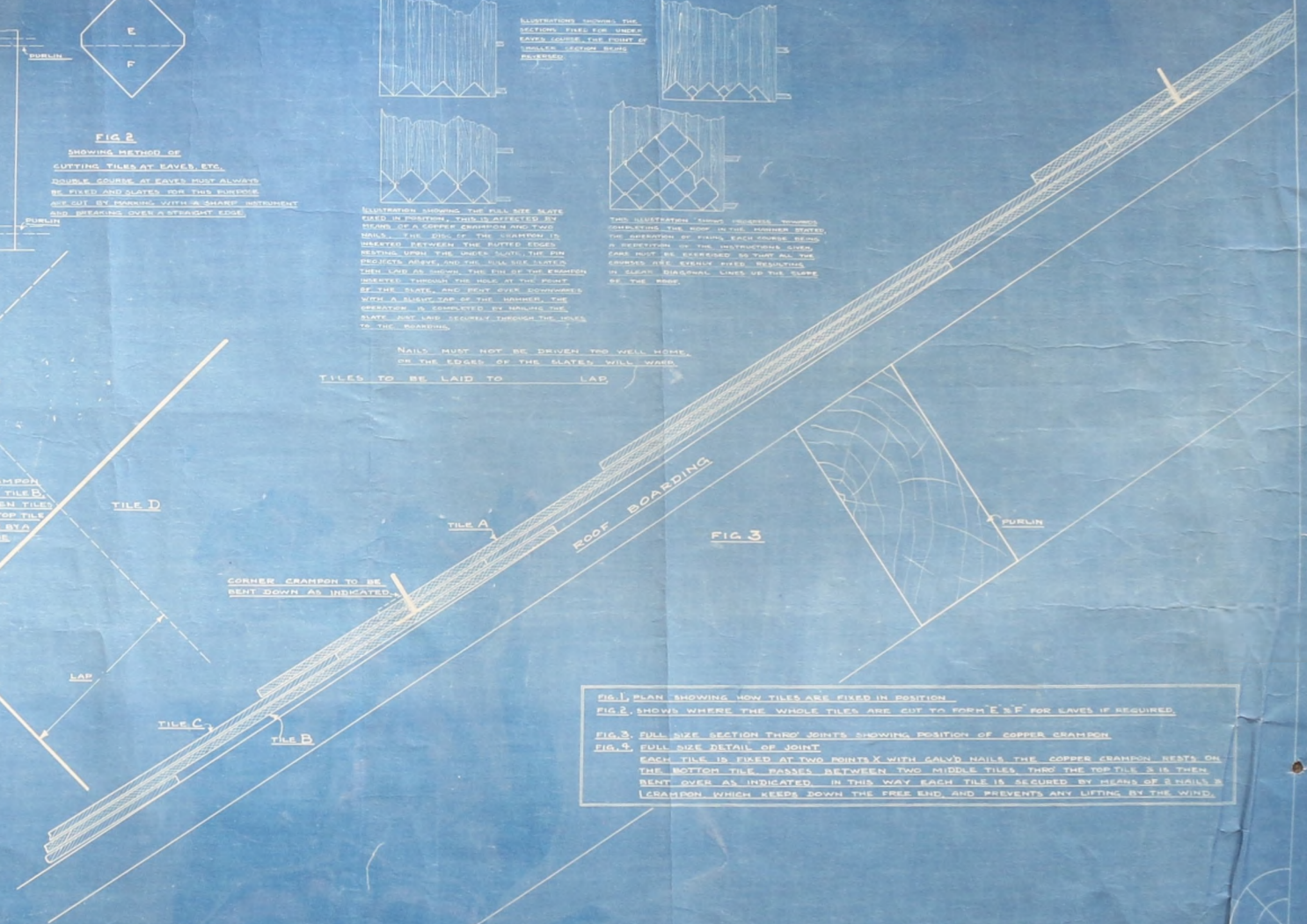


FIG 1. PLAN SHOWING HOW TILES ARE FIXED IN POSITION.
FIG 2. SHOWS WHERE THE WHOLE TILES ARE CUT TO FORM 'E' & 'F' FOR EAVES IF REQUIRED.
FIG 3. FULL SIZE SECTION THROUGH JOINTS SHOWING POSITION OF COPPER CRAMPON.
FIG 4. FULL SIZE DETAIL OF JOINT.
EACH TILE IS FIXED AT TWO POINTS 'X' WITH GALV'D NAILS THE COPPER CRAMPON RESTS ON THE BOTTOM TILE, PASSES BETWEEN TWO MIDDLE TILES, THRO' THE TOP TILE & IS THEN BENT OVER AS INDICATED. IN THIS WAY EACH TILE IS SECURED BY MEANS OF 2 NAILS & CRAMPON WHICH KEEPS DOWN THE FREE END AND PREVENTS ANY LIFTING BY THE WIND.

— PORT STANLEY IMPROVEMENT SCHEME —

— HOUSING — PAIR BLOCK HOUSE — TYPE A —



— FRONT ELEVATION —



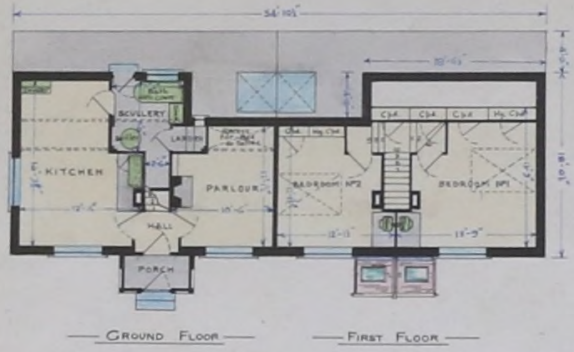
— END VIEW —



— SECTION A-B —



— HALF BACK ELEVATION —

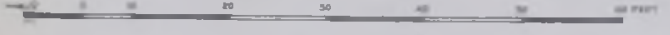


— PLAN —

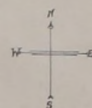
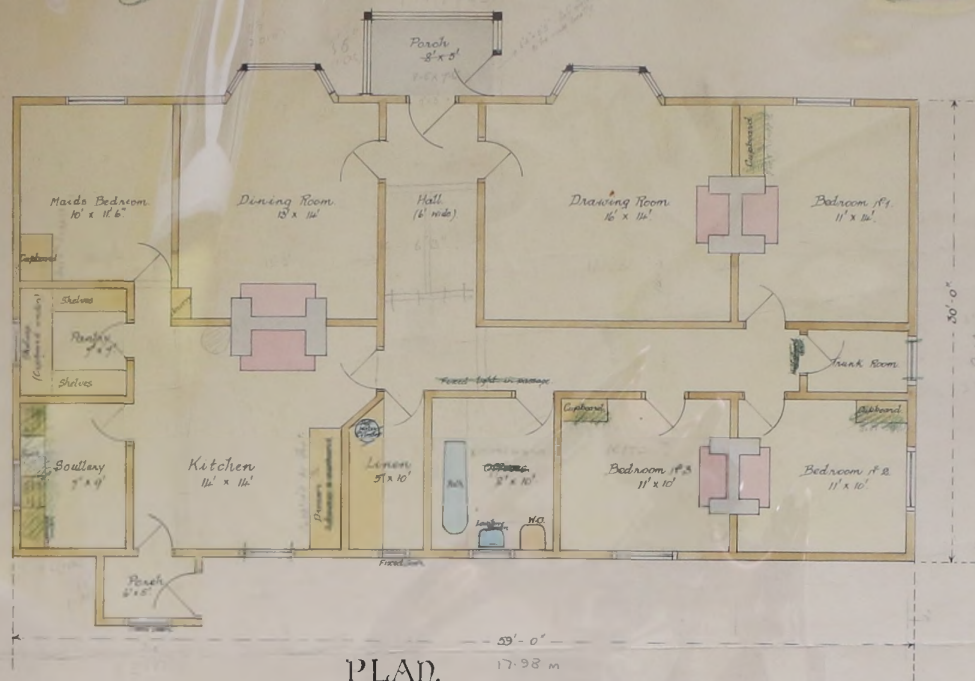


ACCOMMODATION		CONSTRUCTION	
KITCHEN	16'-6" x 10'-5" (meas) = 180 Feet Super.	Concrete block work :	11" hollow outside walls ; 6" division walls + 3" partition walls ;
PARLOUR	12'-0" x 9'-6" () = 112 . . .	lined with compressed wood fibre boards	panelled out with 1 1/2" x 3/8" cover slips except
SCULLERY	58 . . .	porch, scullery, larder, stairs + chimney breasts ;	corrugated galvanised iron roof on felt
LARDER	10 . . .	8 1/2" boarding + 3" x 2" rafters ; pressed steel gutters + down pipes ;	4" x 2" ground floor joists
BEDROOM NO 1	12'-6" x 12'-0" () = 150 . plus Cpts 8'0"	+ 7" x 2" upper floor joists + beams of old tramway rails ;	self setting range, boiler + stoves in
BEDROOM NO 2	12'-0" x 10'-0" () = 125 . . .	kitchen, scullery + bedrooms ;	steel casements to all window openings + 16 oz. glass ; imputed
PORCH, HALL, STAIRS + LANDING	80 . plus Cpts 7'0"	1 1/2" doors 6'-6" high ; 2'-0" wide to porch, kitchen + parlour ;	3'-0" wide to hall + 2'-0" wide
	715 . plus Cpts 15'-0"	to scullery + bedrooms ; 2'-0" wide to back door ;	bitumastic sheet damp course + 9" x 4 1/2"
	TOTAL = 750 Feet Super	air bricks ; chimney flues 4 1/2" concrete blocks + 8" withes, 3" concrete slab cope + 4 lb	lead flashings to chimneys lintels &c. ; all internal woodwork surfaces + underside ground
		floor stained brown Solignum + external woodwork 3 coats oils after priming ; roof,	gutters &c coated red oxide paint ; porch to be roughcast + reinforced concrete rainwater
		tanks.	
		Note	For details see separate sheet
CUBE			
55'-0" x 14'-0" x 20'-0" (meas)	= 15,400 Feet Cube		
2/18'-6" x 4'-6" x 14'-0" ()	= 2,340 . . .		
2/7'-6" x 4'-0" x 10'-0" ()	= 600 . . .		
	TOTAL 18,340 Feet Cube		
	per pair block		

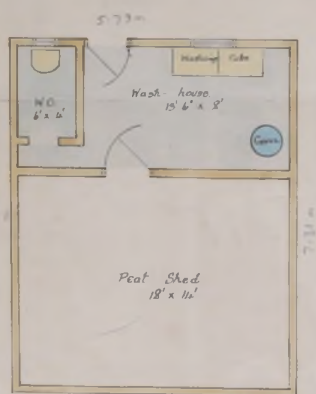
— Scale — 8 Feet to an Inch —



PORT STANLEY, FALKLAND ISLANDS. - OFFICERS QUARTERS, BUNGALOW.



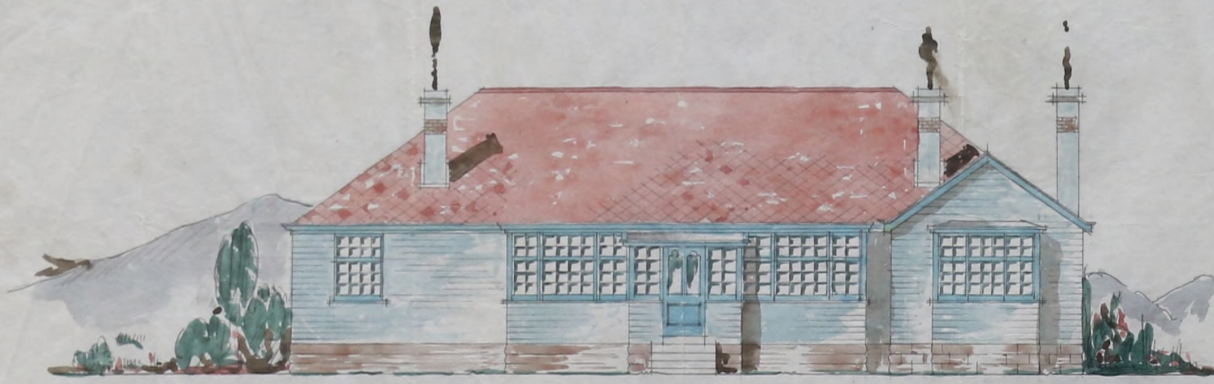
PLAN.



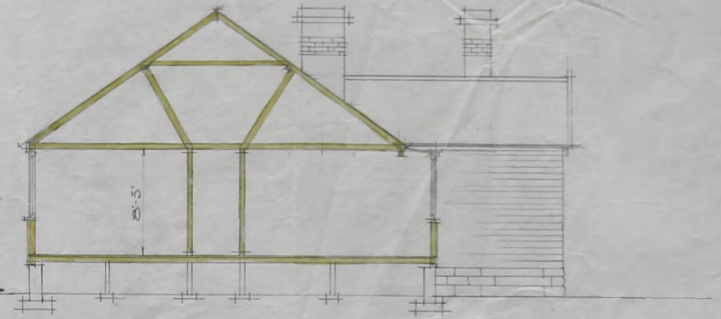
NORTH ELEVATION.

SCALE 1/4 inch to a foot.

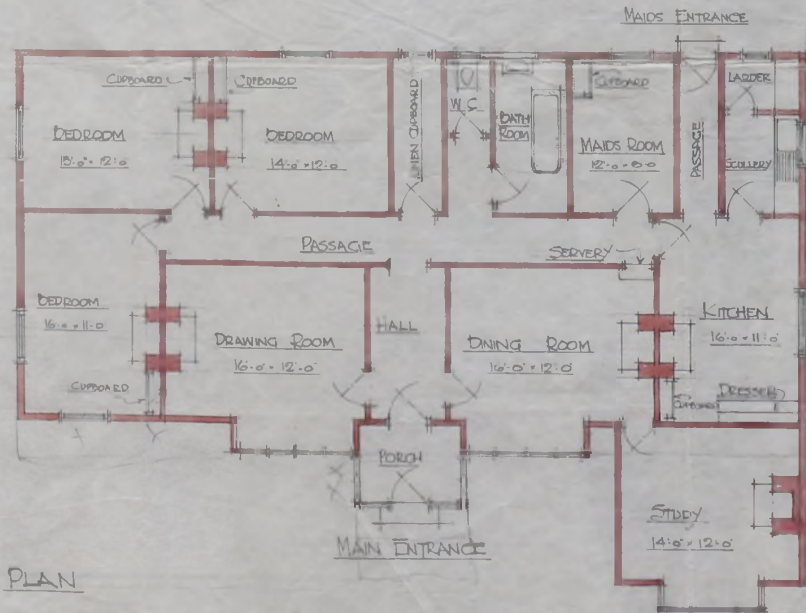
4-5-6
Rose Rd West
2(1)



FRONT ELEVATION

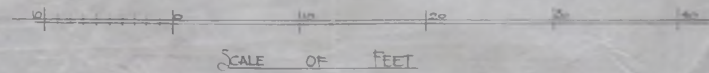


CROSS SECTION



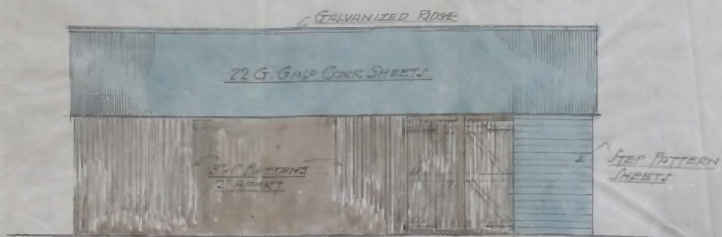
PLAN

PROPOSED BUNGALOW
FOR THE FALKLAND ISLANDS
DRAWING No B/614

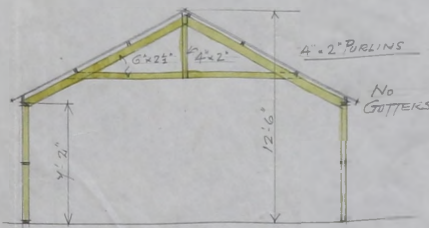


WILLIAM EAIN & CO LTD
COATBRIDGE SCOTLAND
29-6-28

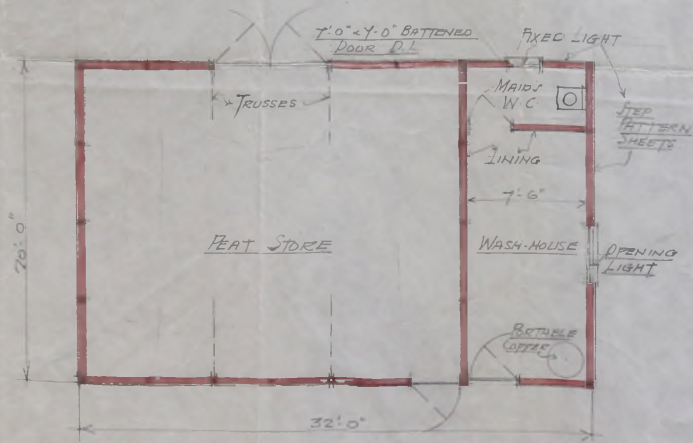
Q.M.



- ELEVATION -



- CROSS SECTION -



- PLAN -

PROPOSED PEAT STORE FOR THE FALKLAND ISLANDS.

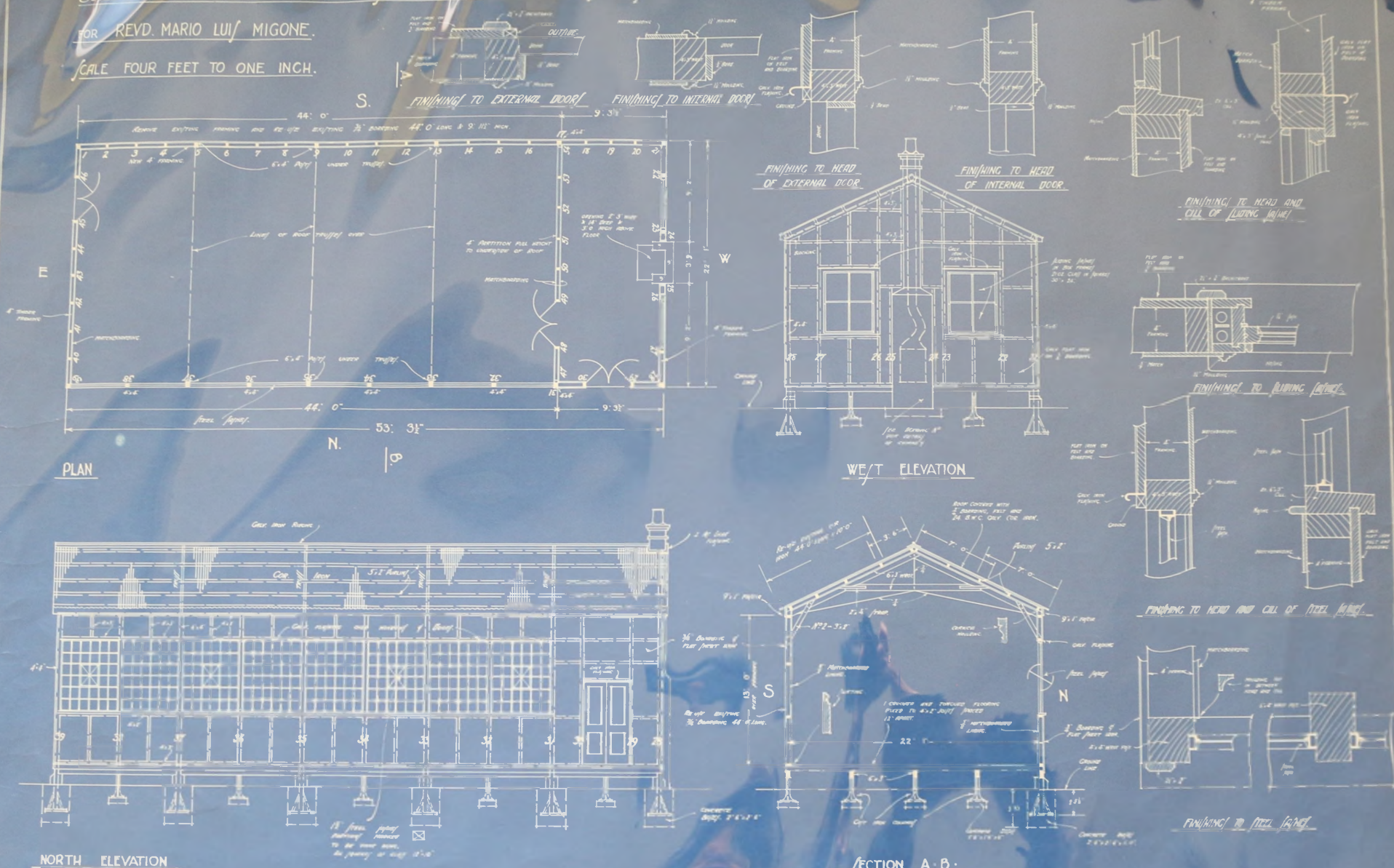
DRAWING NO 8/615

WM DAIN & CO LIMITED
 CARTRIDGE SCOTLAND.

BUILDING FOR EXPORT TO PORT STANLEY FALKLAND ISLANDS

FOR REVD. MARIO LUI MIGONE.

SCALE FOUR FEET TO ONE INCH.



PLAN

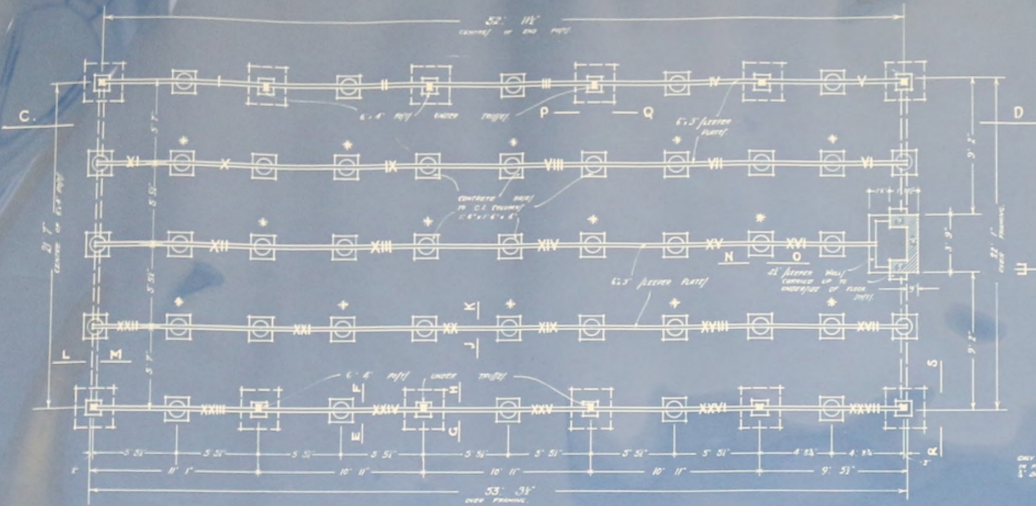
W/E T ELEVATION

NORTH ELEVATION

SECTION A-B

WILLIAM BARKER (SIN) LTD
BUILDING SPECIALITY
107A BARKERLEY
LONDON / E. OCT 1928

DRAWING NO 18.163



BUNGALOW FOR EXPORT TO PORT STANLEY
FALKLAND ISLANDS

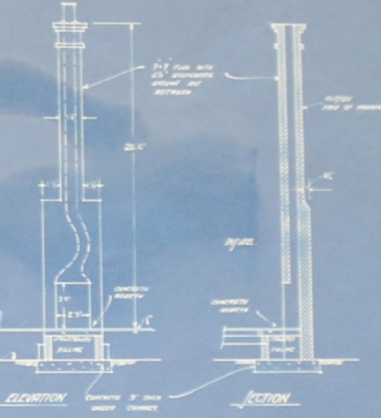
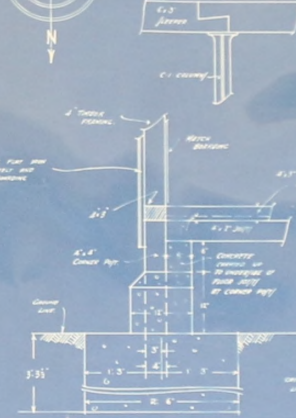
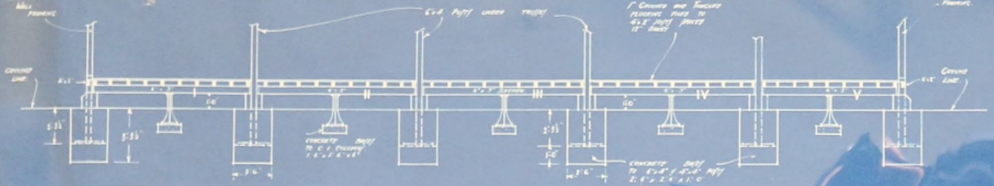
FOR THE REVEREND FATHER MARIO LUI MIGONE.

SCALE: 4 FEET TO ONE INCH.



JOINT IN SLEEPER PLATE - RT ON PLAN

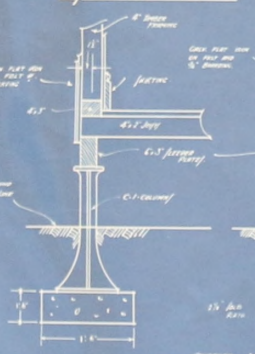
PLAN VIEWING CONCRETE BEAMS TO C-1 COLUMN AND 6"x3" SLEEPER PLATE



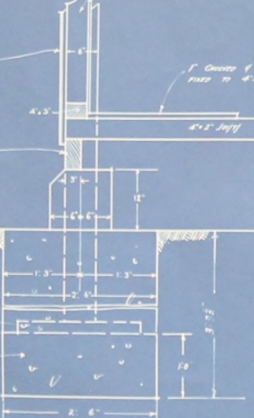
SECTION R-J

DETAIL OF CHIMNEY

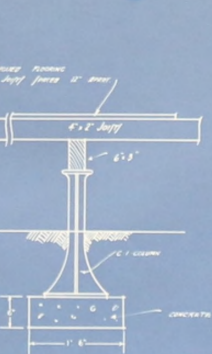
SECTION C-D



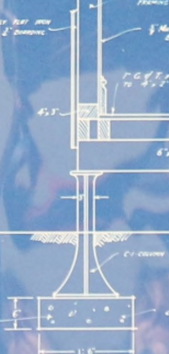
SECTION G-H



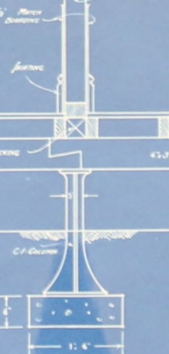
SECTION J-K



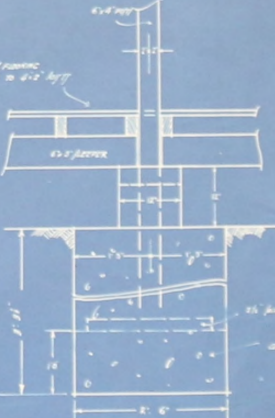
SECTION L-M



SECTION N-O



SECTION P-Q



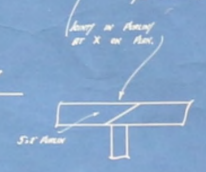
INCH SCALE DETAILS

WILLIAM BARROW & CO. LTD.
BUILDING ARCHITECTS
10, SOUTH BROMFIELD
LONDON, E.C. OCT. 1928.

DRAWING NO. 18.164.

BUILDING FOR EXPORT TO PORT STANLEY · FALKLAND I/LAND/

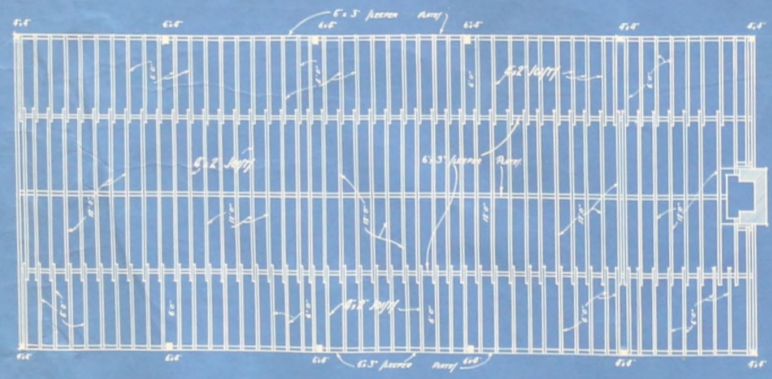
FOR: THE REV. FATHER MARIO LUIGI MIGNONE.



Roofing 5 x 8

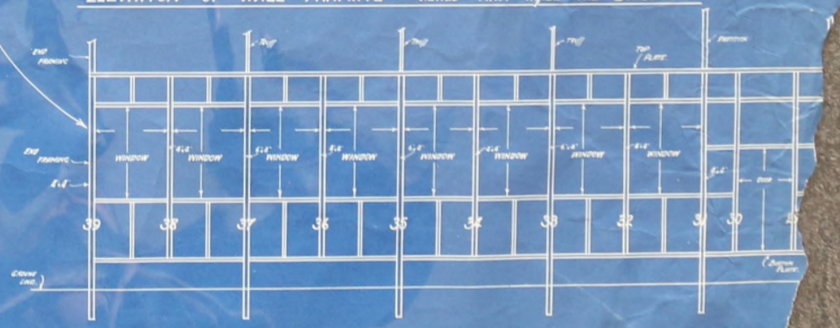
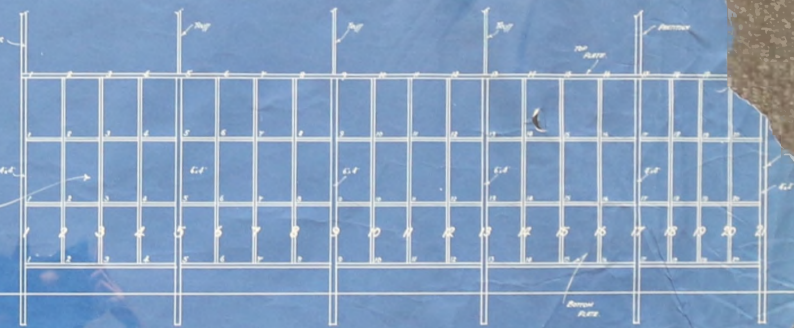
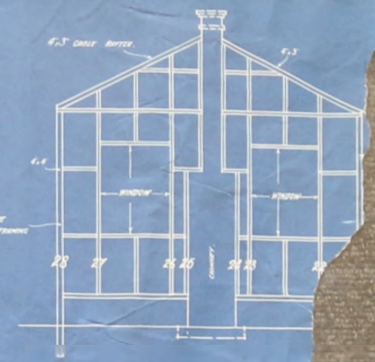
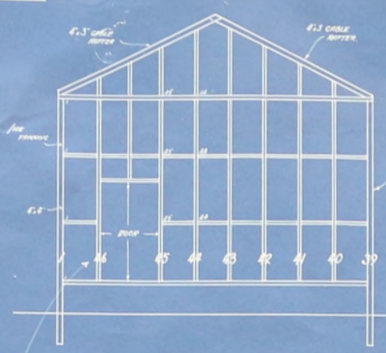
N° 15 - 23	1 1/2"	5 x 2"
N° 5 - 22	1 1/2"	5 x 2"
N° 5 - 19	1 1/2"	5 x 2"
N° 5 - 11	1 1/2"	5 x 2"
N° 1 - 14	1 1/2"	TO CUT FOR TRUSSING

ERECTION MARKING
 THESE ELEVATIONS SHOW THE METHOD OF MARKING THE FRAMEWORK OF THE BUILDING ALL OTHER FRAMING IS MADE IN A SIMILAR MANNER IN ACCORDANCE WITH THE NUMBERS GIVEN ON THE PLAN.



FLOOR JOIST 4 x 2

N° 53 - 12	1 1/2"	4 x 2"
N° 43 - 11	1 1/2"	TO CUT (36 JOIST)
N° 3 - 11	1 1/2"	4 x 2"

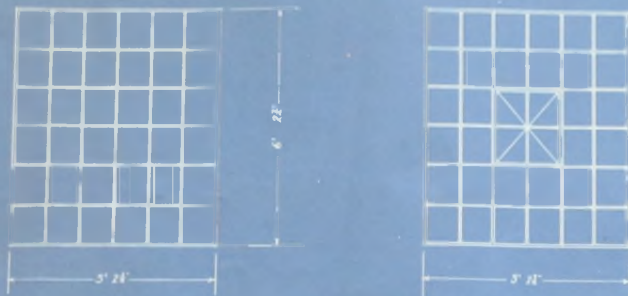


SCALE: FOUR FEET TO ONE INCH

WILLIAM HARRISON (1912) LTD.
 BUILDERS & CONTRACTORS,
 SOUTH BROMWICH,
 LONDON, E. 16. Oct. 1928.

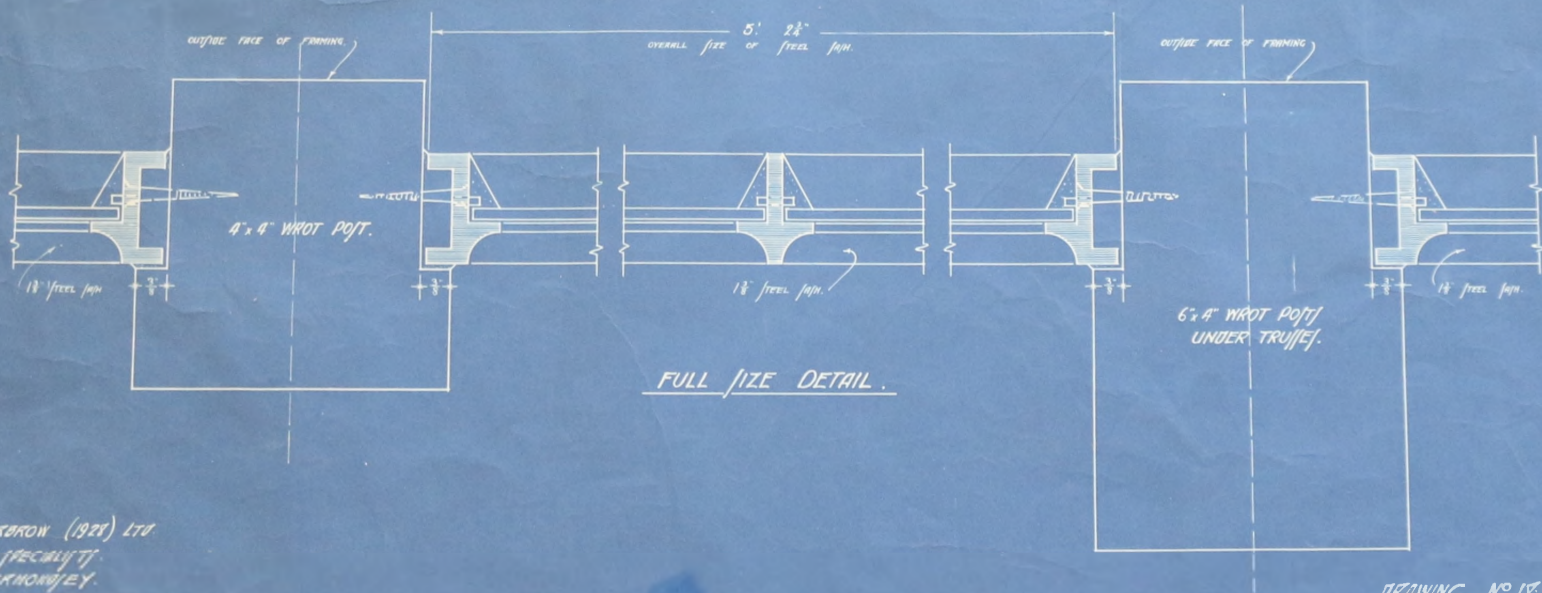
BUNGALOW FOR EXPORT TO THE FALKLAND I/LAND/.

FOR THE REV. FATHER MARIO LUIS MIGONE.



NOTE:
DOTTED PORTION INDICATING
POSITION OF VENTILATOR
ALONG AN HORIZONTAL CURVE

SCALE: HALF INCH TO ONE FOOT



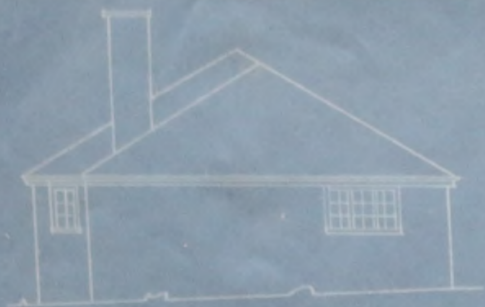
FULL SIZE DETAIL.

WILLIAM HARGREAVES (1928) LTD.
BUILDING SPECIALISTS
SOUTH BERNHAMPTON
LONDON. S. E. OCT. 1928.

DRAWING N° 18.166

GENERAL - ROSS ROAD WEST - C 1947

MCI-41-GE-0018



WEST ELEVATION



SOUTH ELEVATION



EAST ELEVATION



NORTH ELEVATION

GENERAL - ROSS ROAD WEST



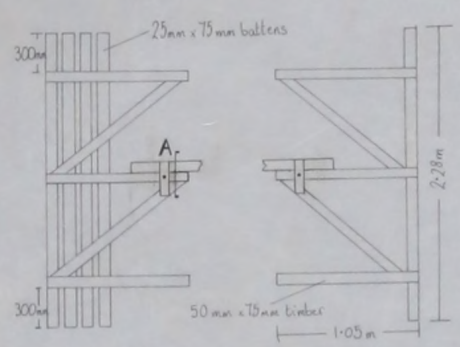
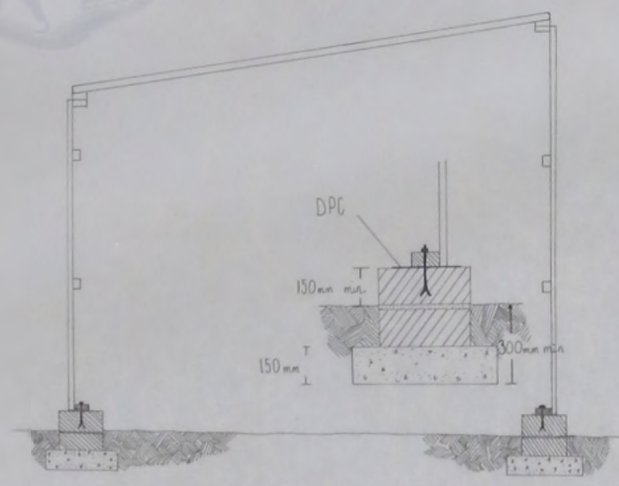
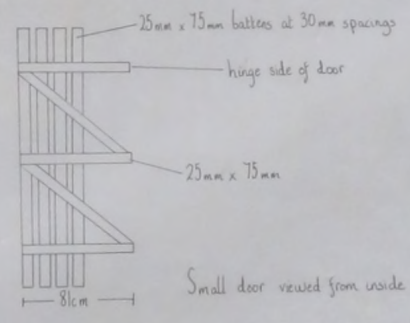
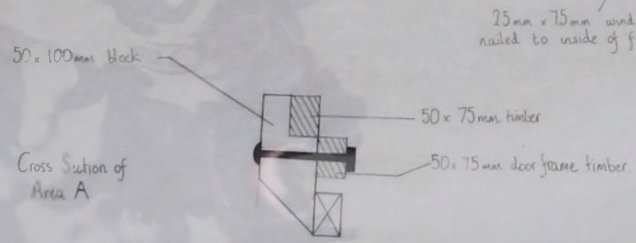
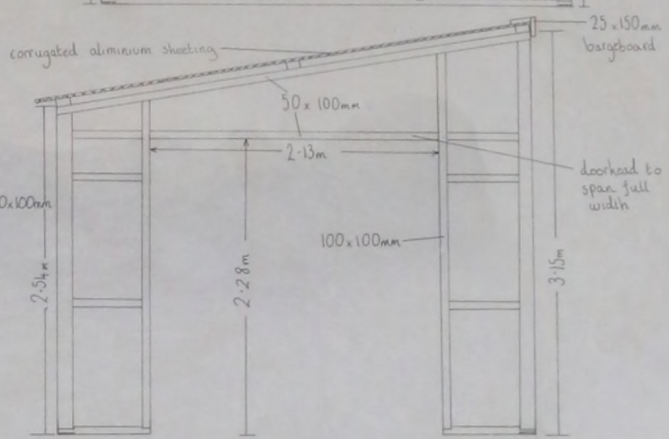
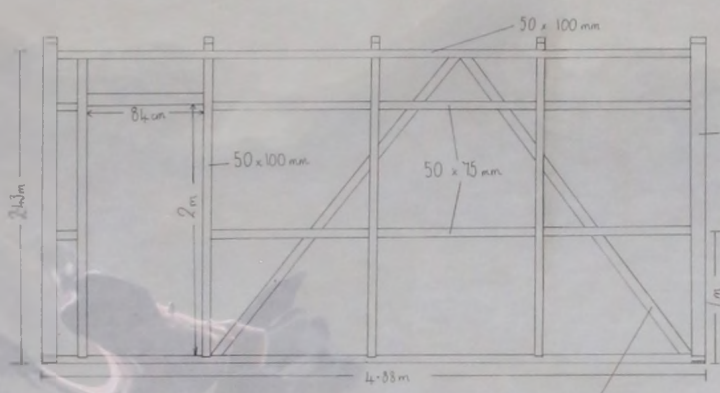
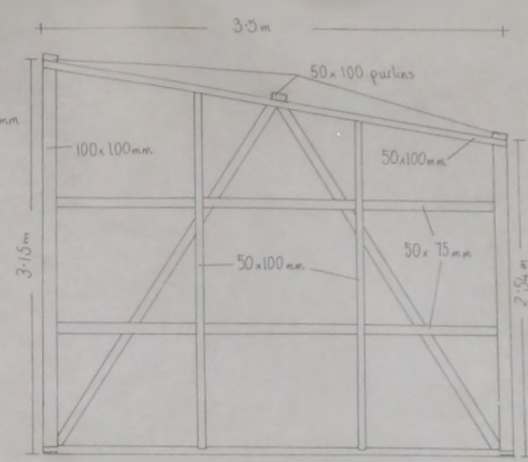
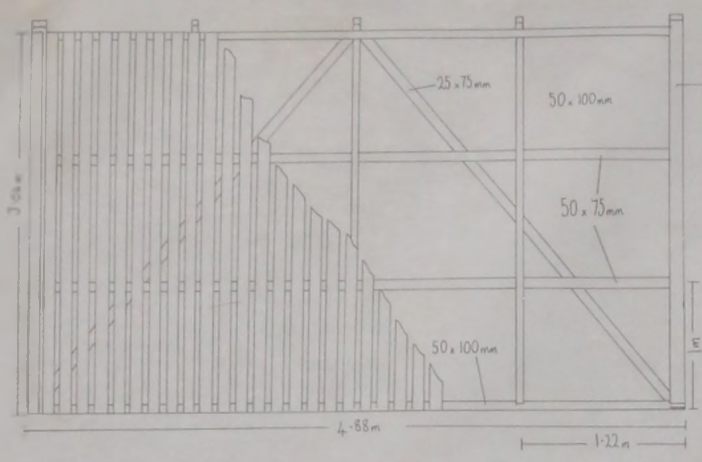
SOUTH ELEVATION



GROUND FLOOR

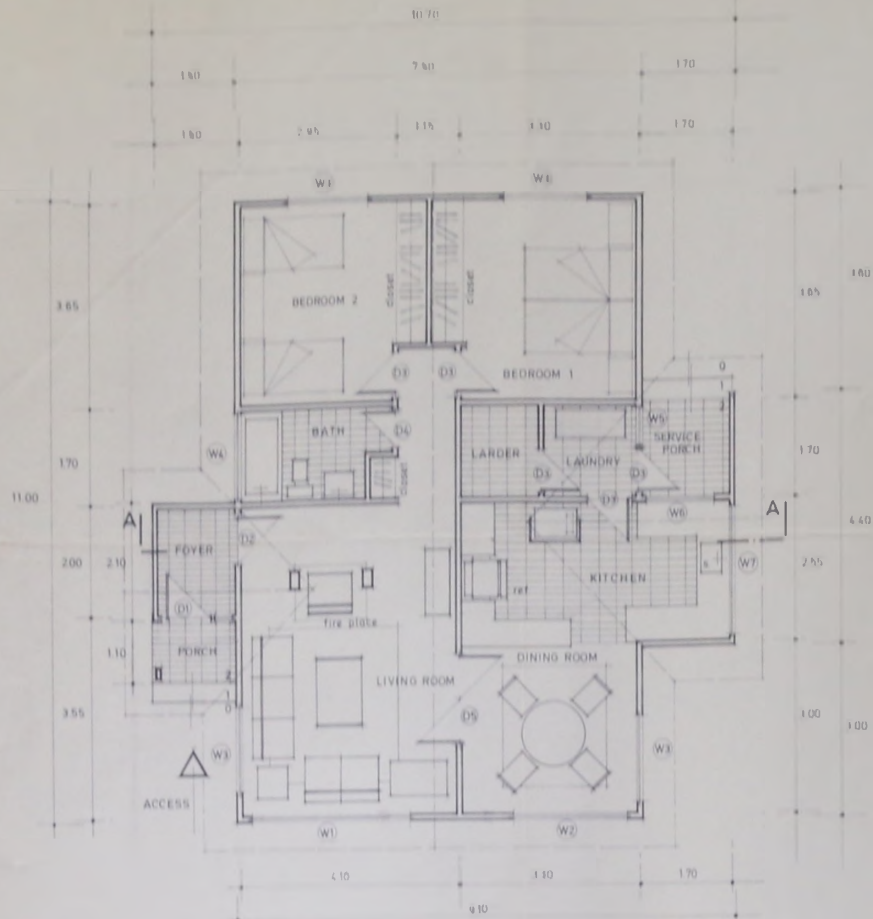
PROPOSED QUARTERS GRADE II (ARTISAN)
 FORT STANLEY - FALKLAND IS.
 SPECIFIC PLAN
 S.C. Tol

AS
 ARCHT. E.
 1003 MARCH 47



ASSOCIATED DRAWINGS No. TITLE		NOTES
PWD PEAT SHED DESIGN		
DATE 1/70	DRAWN BY 4/4/85	AMENDMENTS

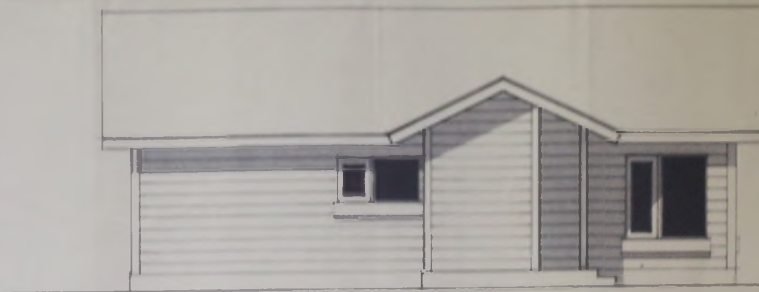
101



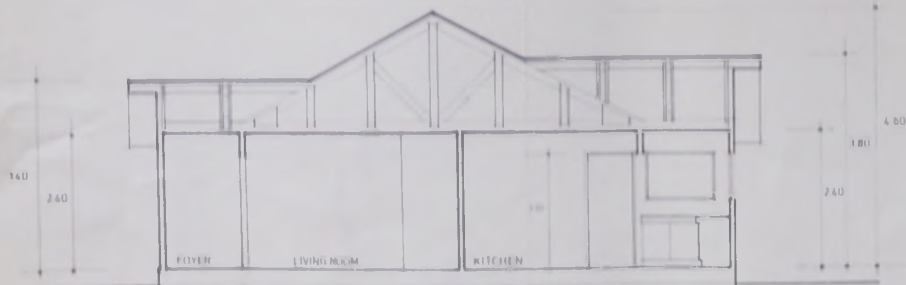
GROUND PLAN 1 50



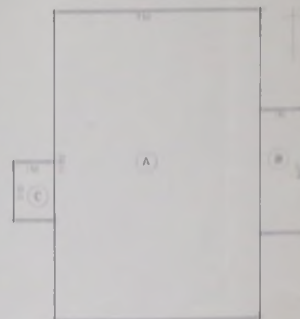
FRONT ELEVATION 1 50



LEFT ELEVATION 1 50



SECTION A-A 1 50



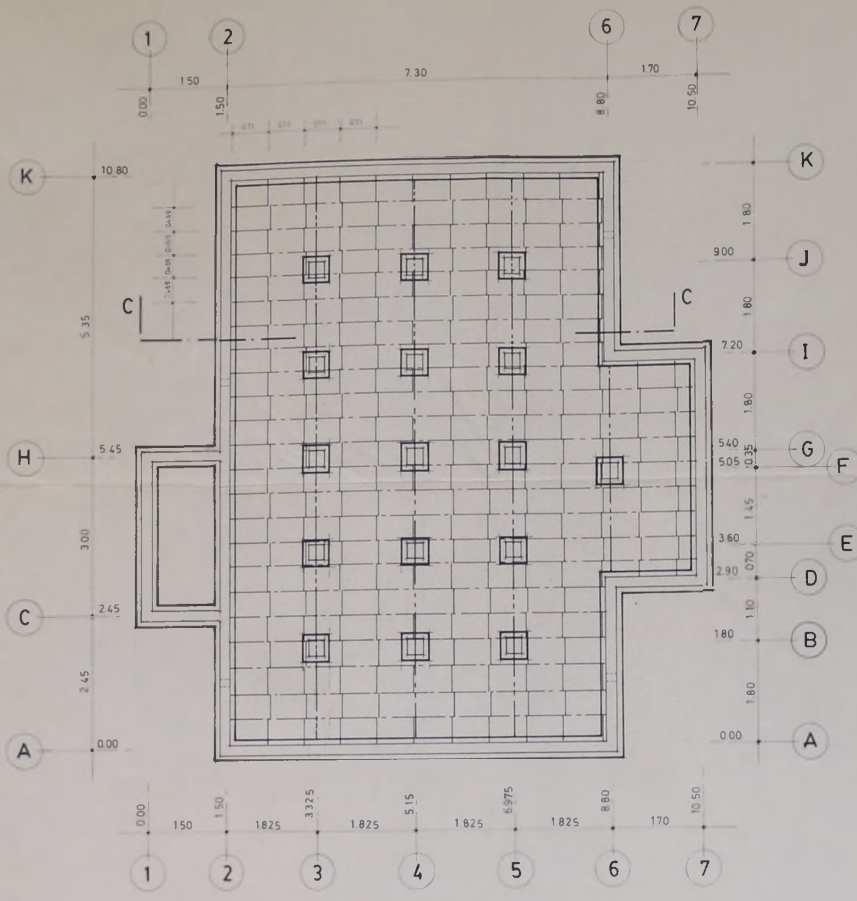
SURFACE 1 100

PRE BUILT HOME DESIGN
93,13 m²

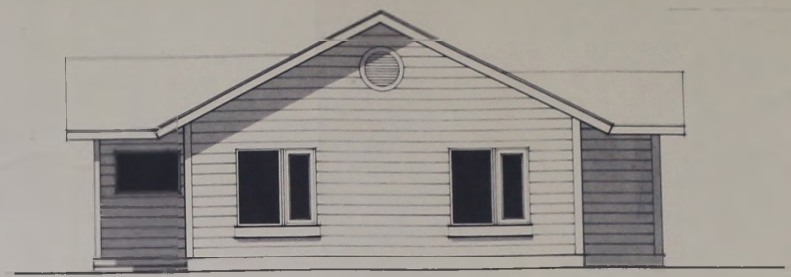
- A - 82,50 m²
- B - 7,48 m²
- C - 3,15 m²
- 93,13 m²

Pinto Arenas 1984

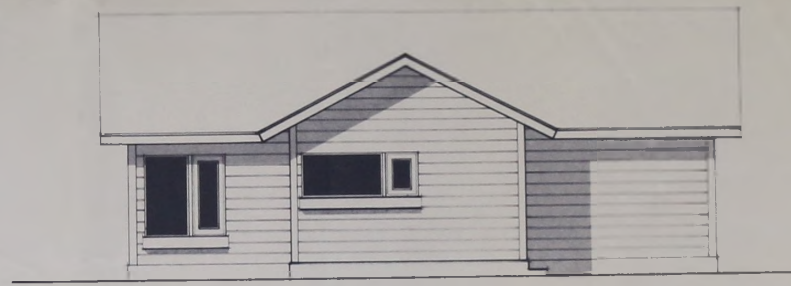
JOSUEN FERNANDEZ DURKOPF
ARCHITECT



FOUNDATION PLAN 1 50

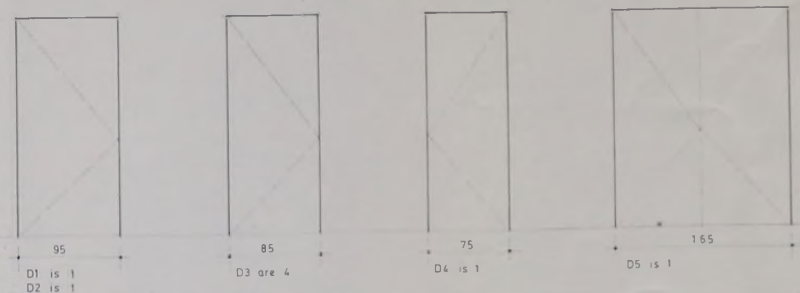
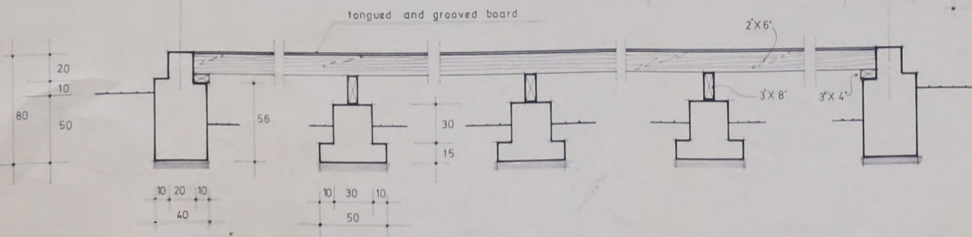


REAR ELEVATION 1 50



RIGHT ELEVATION 1 50

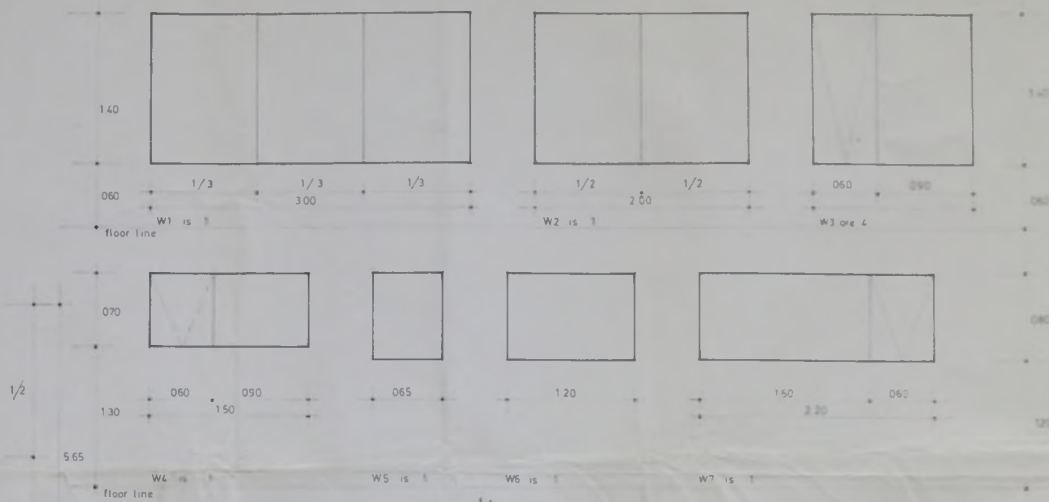
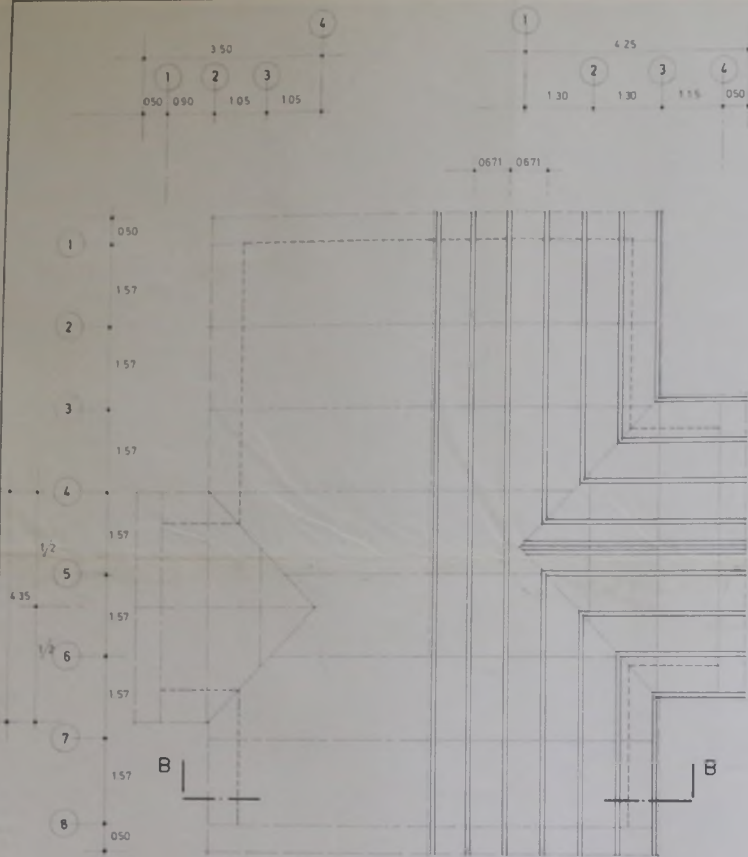
SECTION C-C 1 20



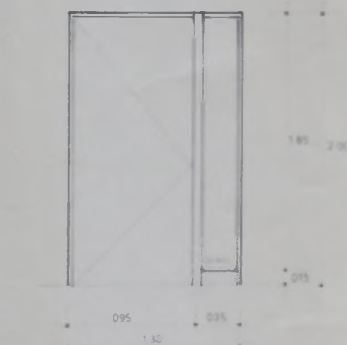
DOORS 1 25

PREBUILT HOME DESIGN 93,13 m2

101



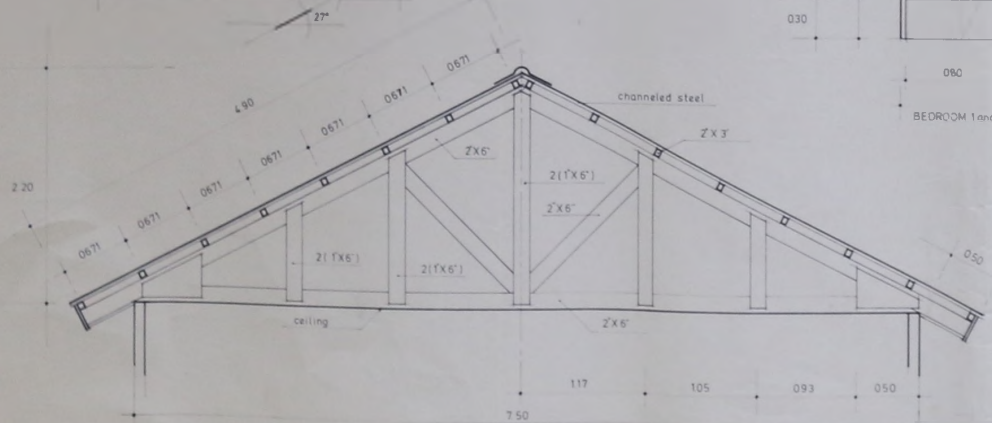
WINDOWS 1 25



FRONT DOOR 1 20

CLOSET 1 20

ROOF STRUCTURE 1 50

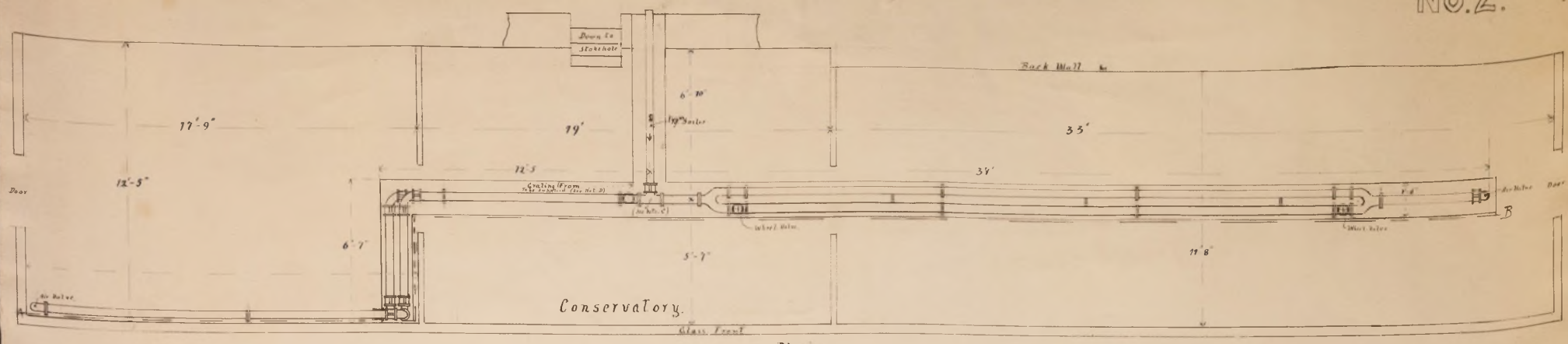


SECTION BB 1 25

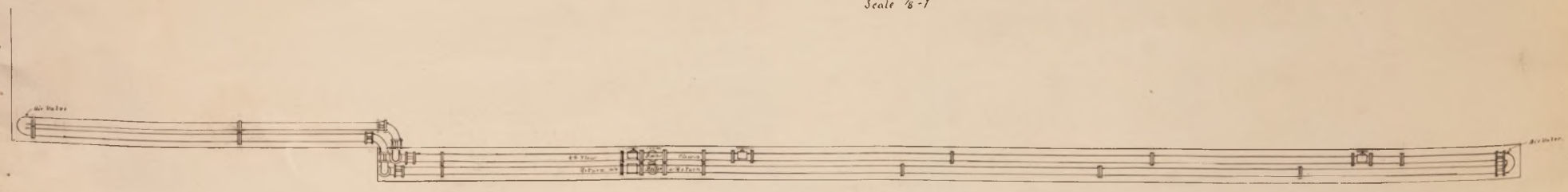
PREBUILT HOME DESIGN
93,13 m²



NO. 2.



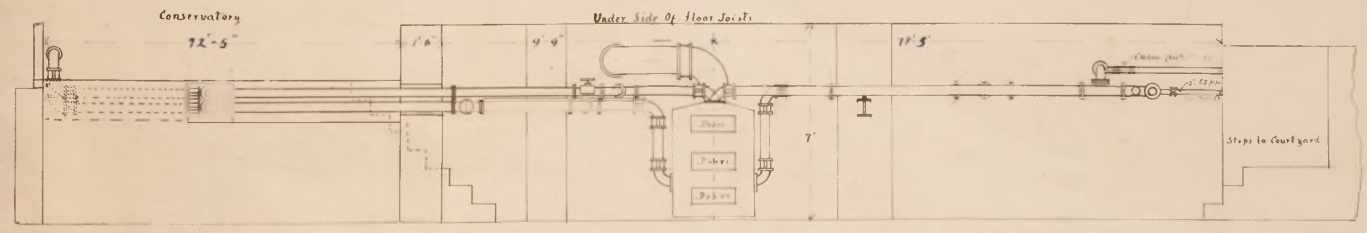
Plan. Scale 1/8"-1'



Elevation through A-B. Scale 1/8"-1'

GOVERNMENT HOUSE.

STANLEY. F. I.



Elevation through Conservatory and Basement. Scale 1/8"-1'

Pipe Line In Conservatory etc. Scale 1/8"-1'

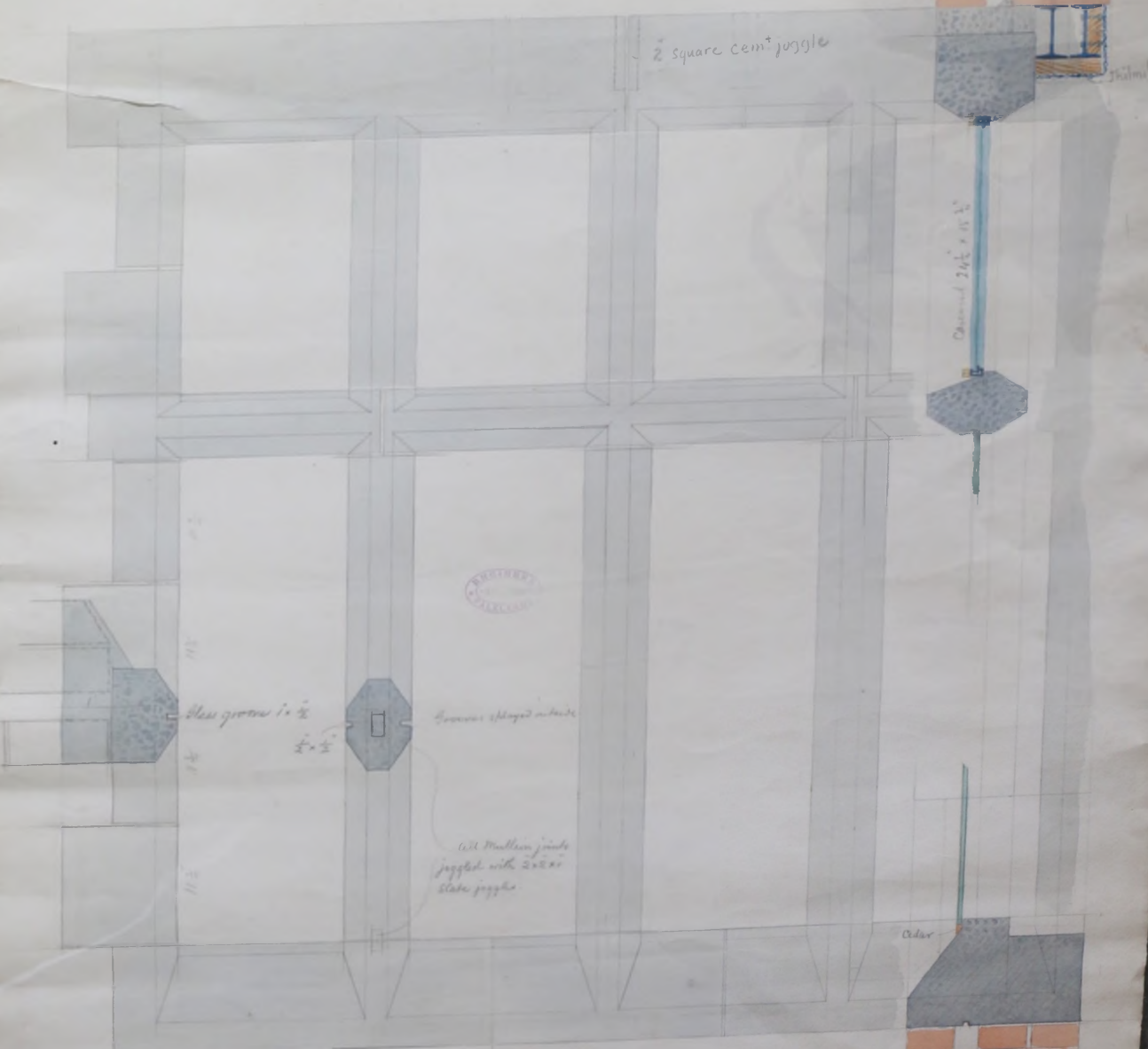


Stanley, A. F. I. Mech. E. Colonial Engineer.

MCI-41-GH-0002

Government House.

Details of Windows



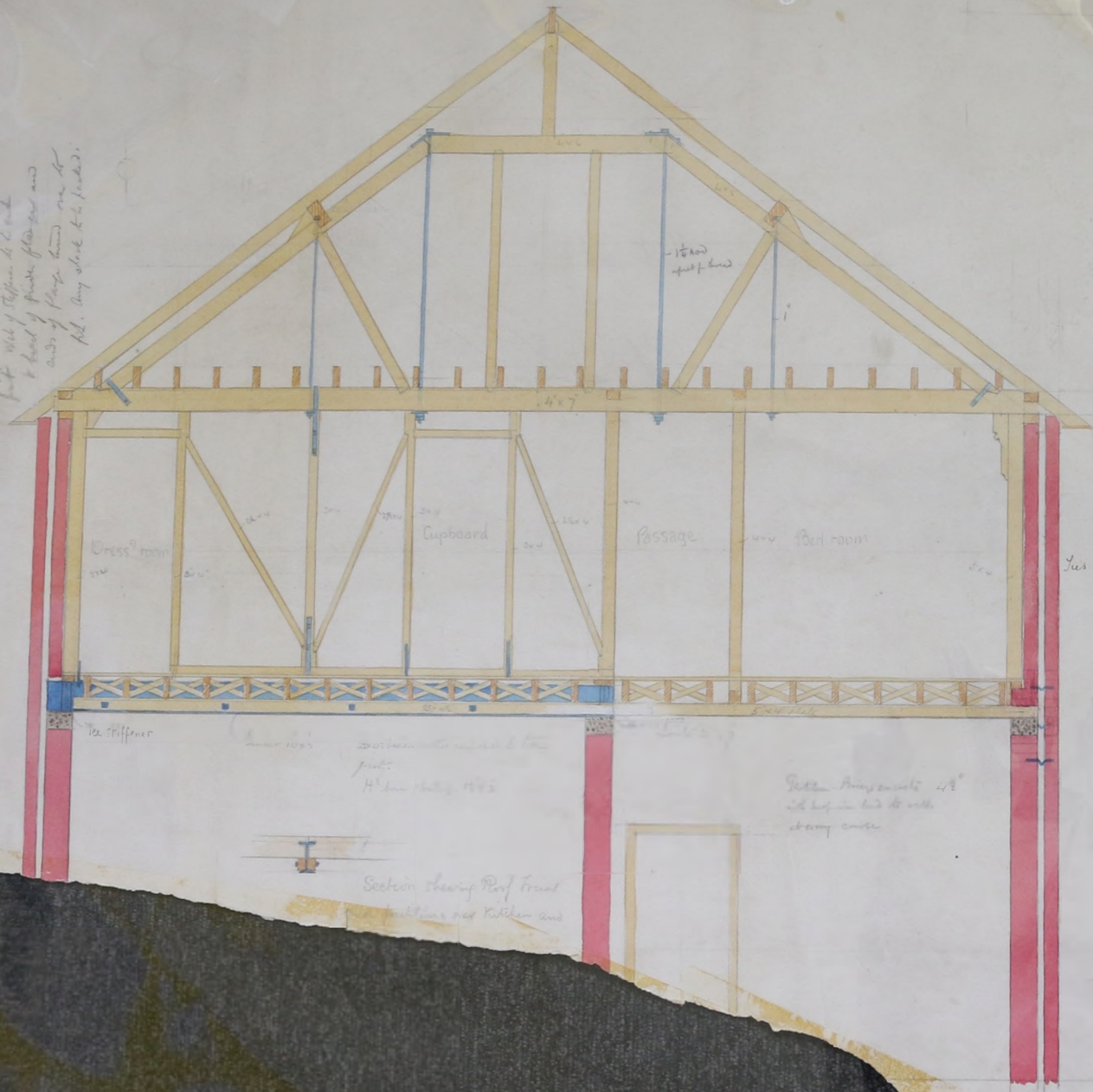
REGISTERED ARCHITECT

Scale $\frac{1}{4}$ full size.

Charles H. [unclear]
4 May 1900

GOVERNMENT HOUSE - DETAILS OF WINDOWS - 04 MAY 1900

Side for Connection
 A pair of Tee stiffeners to be inserted in
 web of girder around the hole
 for the side of Tee flange to be
 a hole of same flange and
 ends of flange bands on the
 fl. long side to be packed.



Use 3/4" x 4" lengths
 1/2" intervals.

Government House

Scale 1/2" = 1 foot

Section showing Roof Truss
 and Partitions over Kitchen and

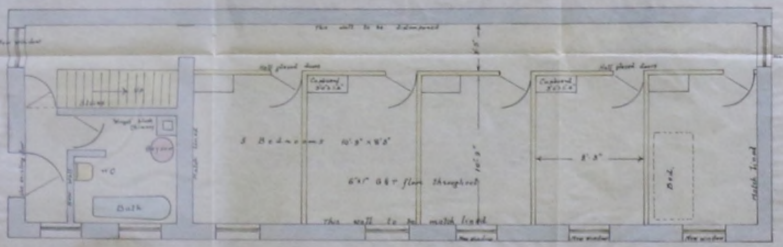
Settin. Angles 45°
 and long in bed to wall
 every case

Use Tee's
 section into wall & top
 part:
 H' low holes 4x2

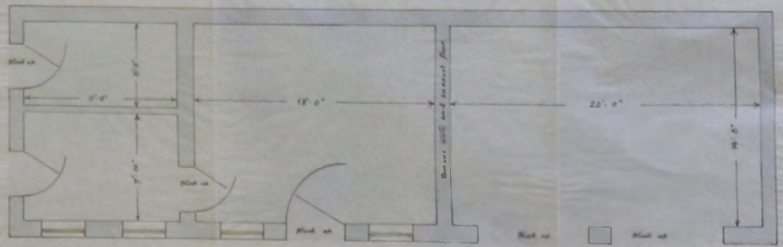
GOVERNMENT HOUSE.
CONVERSION + STORE + SERVANTS QUARTERS.



NORTH ELEVATION.



PROPOSED ALTERATIONS.



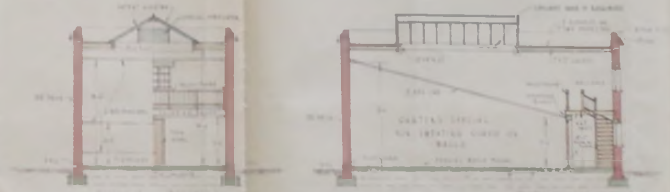
EXISTING PLAN.

1/4" SCALE.

E. P. Baker
20-1-1935

PROPOSED SQUASH REAR COURTYARD
STANLEY, FALKLAND ISLANDS
SCALE: 1/4" = 1'-0"
MARCH 1935

DRAWING NO. 1555



CROSS SECTION

LONGITUDINAL SECTION



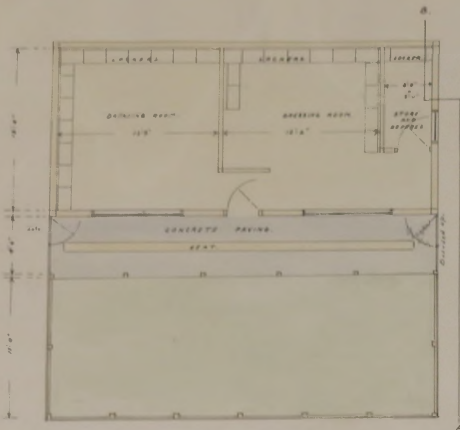
PLAN



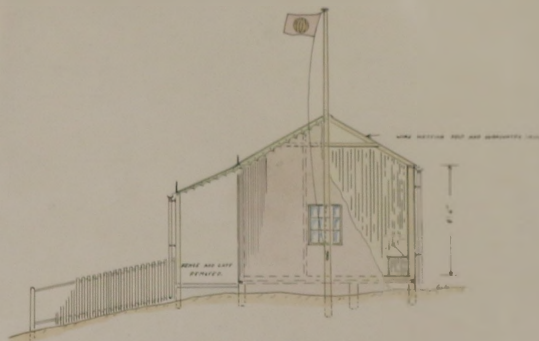
FIRST FLOOR PLAN

NOTE: THIS DRAWING SHOWS A PROPOSED COURT
BASED ON THE PLAN APPROVED BY THE
COMMISSIONER OF THE FALKLAND ISLANDS
GOVERNMENT IN THE MONTH OF
MARCH 1935. THE ARCHITECT IS NOT
RESPONSIBLE FOR ANY CHANGES
HEREAFTER MADE BY THE CLIENT.

H. W. CARTER, LTD.
ARCHITECTS
27-29 WATER LANE
LONDON, E.C. 4
A.S. 20-1-35



PLAN



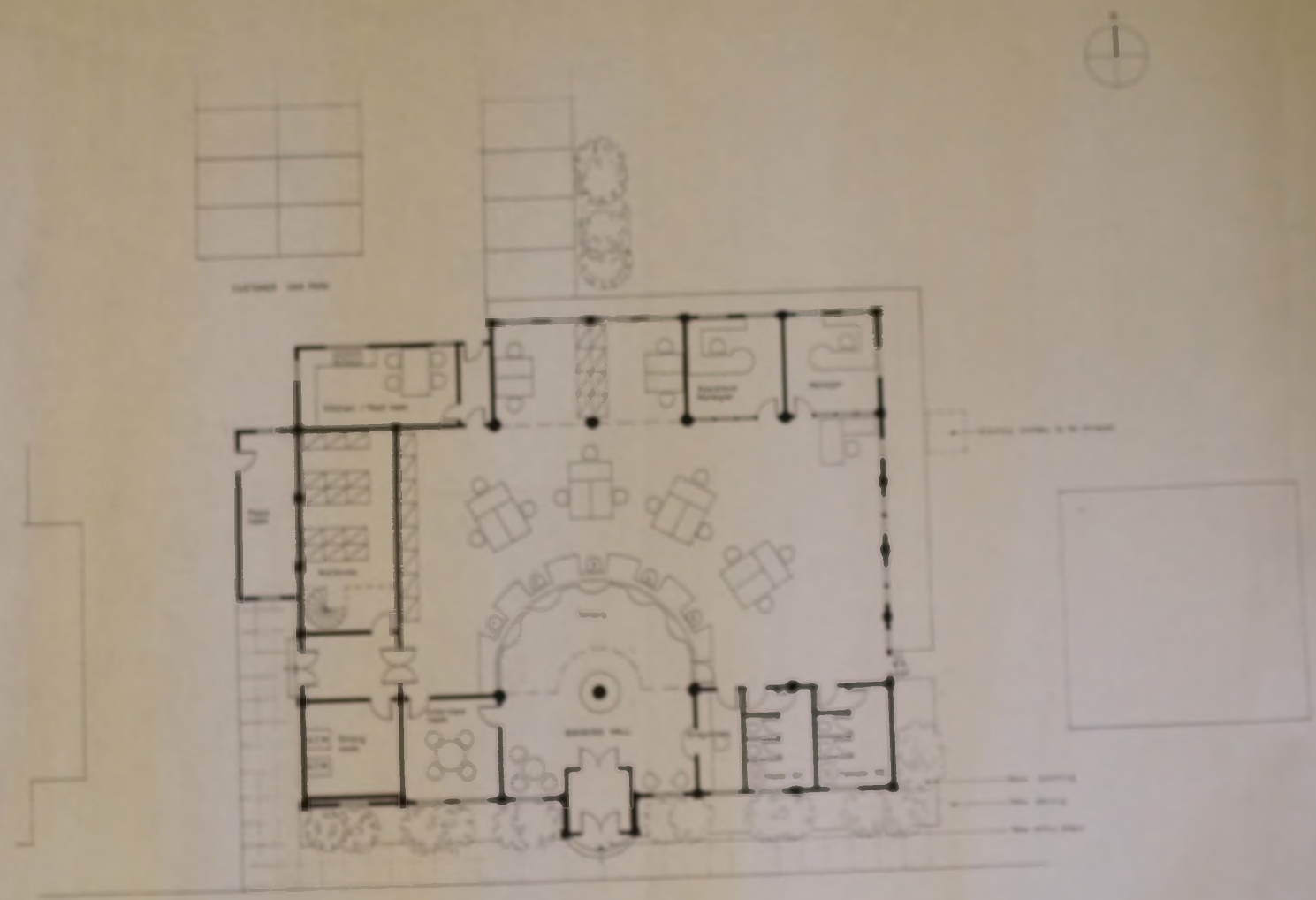
SECTION AB



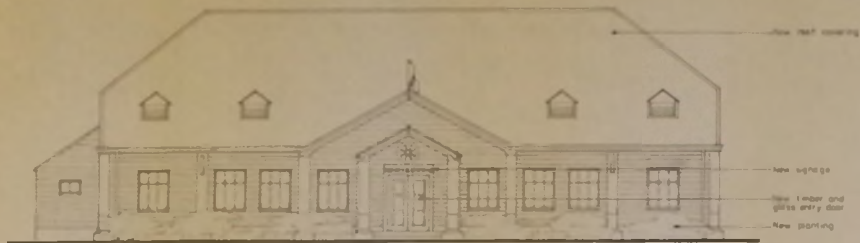
FRONT ELEVATION

PAVILION FOR RECREATION GROUND

*A. B. Clark
Sept 1933*



BELL ROAD



SOUTH ELEVATION



WEST ELEVATION



NORTH ELEVATION



EAST ELEVATION

Standard Chartered

Stanley Branch

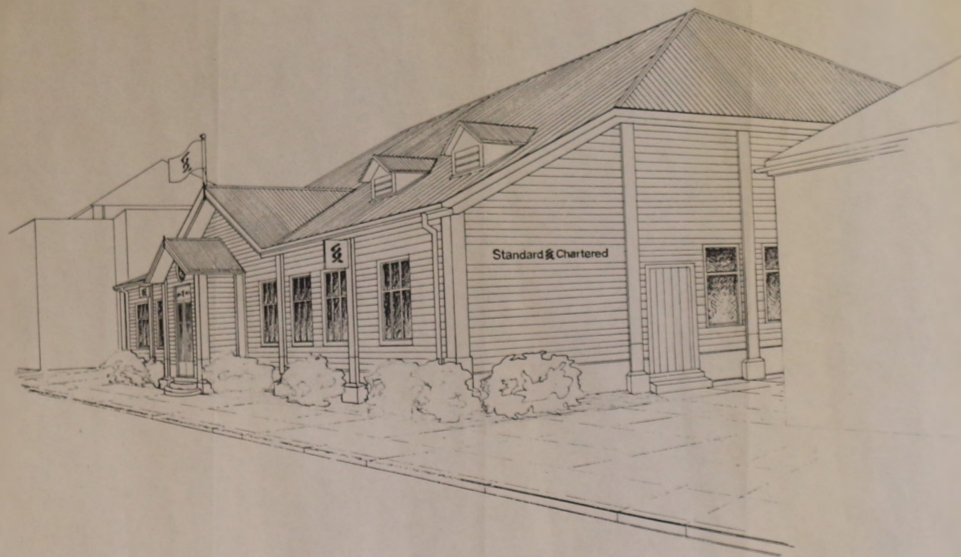
Falkland Islands

drawing number 32.84 SK/02

scale 1:100 approx

DESIGN 5

ARCHITECT
 CONSULTANT
 CONTRACT NO.
 DATE
 DRAWN BY
 CHECKED BY
 APPROVED BY



Standard Chartered

Stanley Branch

Falkland Islands

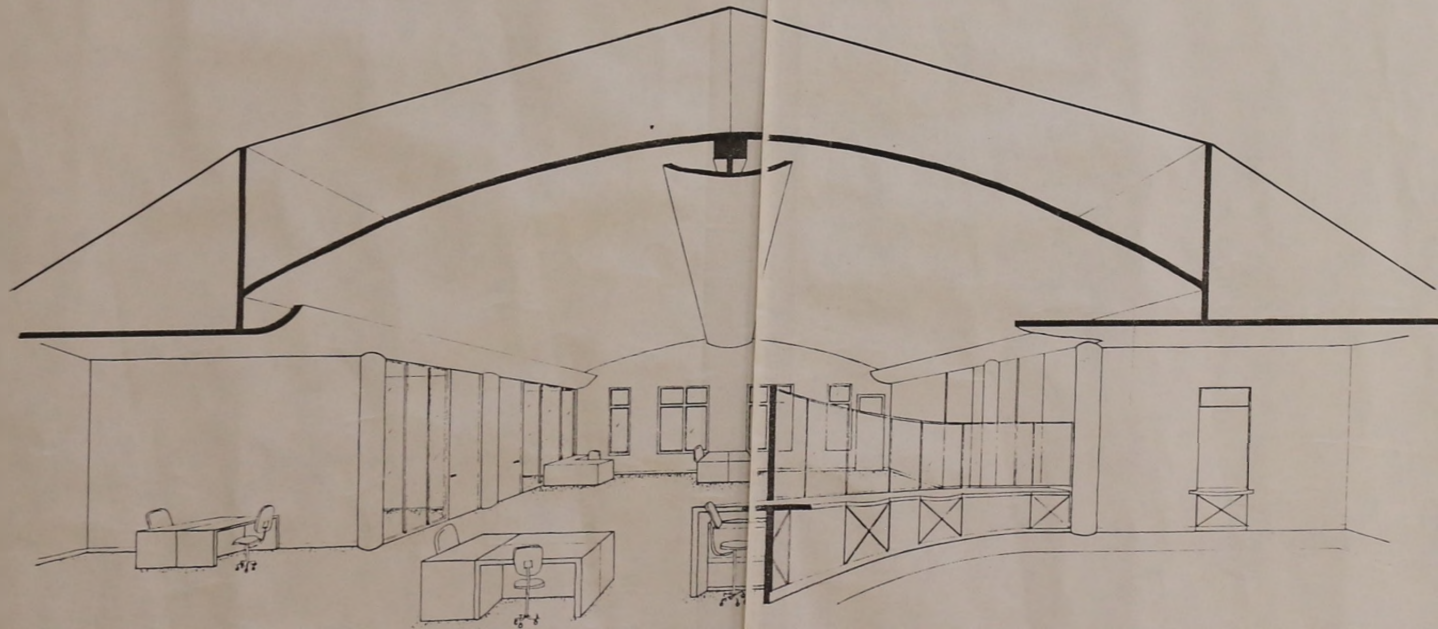
drawing number 32/84 SK/03

DESIGN 5

40 Bridge Place
London EC4A 3DF

Telephone
071 486 1111
Fax
071 486 1100

INTERIOR
ARCHITECTURE
PRODUCT
GRAPHIC
MANAGEMENT



Standard Chartered

Stanley Branch

Falkland Islands

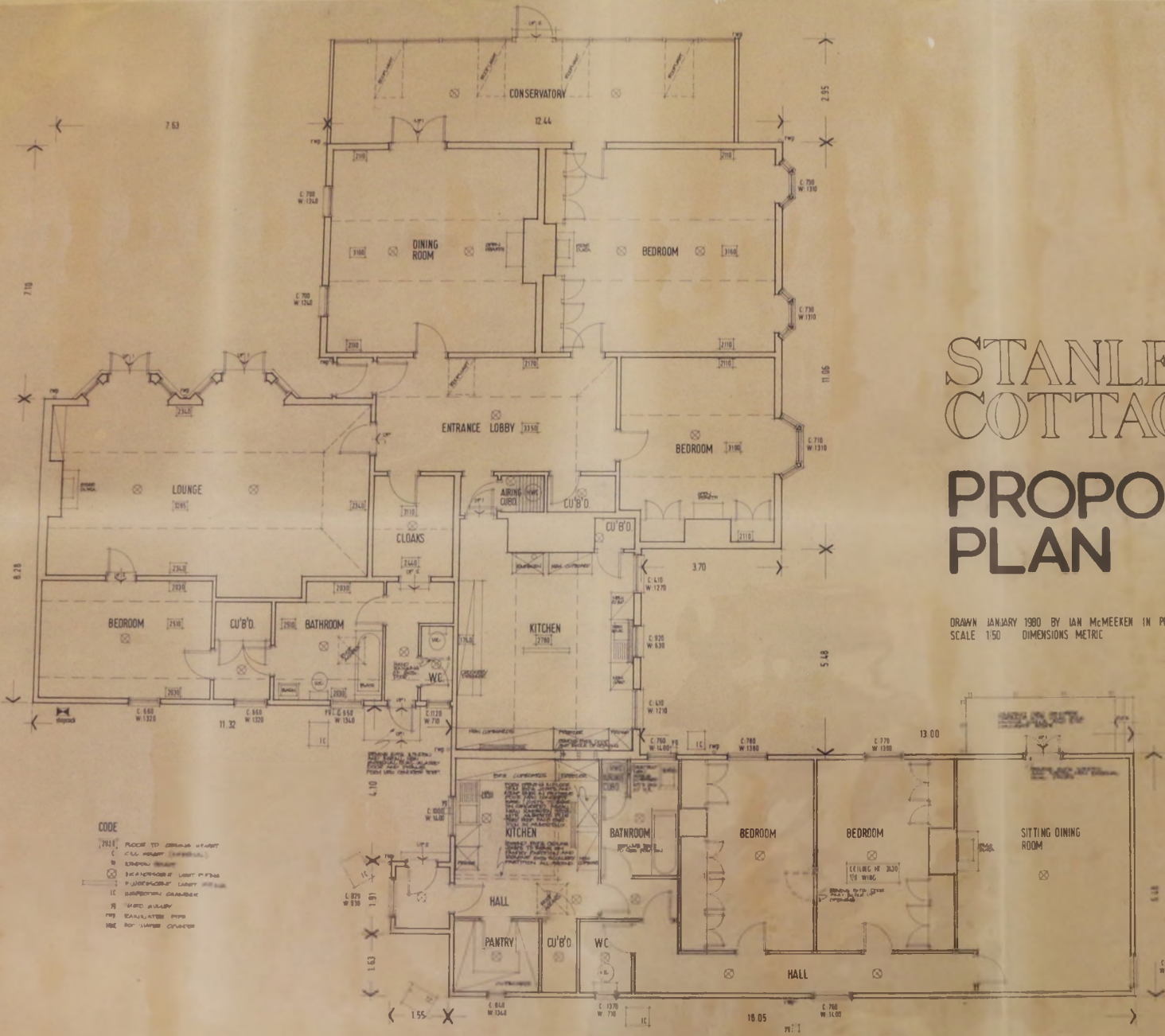
drawing number 32/84 SK/04

DESIGN 5

40 Bridge Place
Baylis Street
London NW1 0TL

Telephone
011 485 1177
Fax
011 284 1281

INTERIOR
ARCHITECTURE
PRODUCT
GRAPHIC
MANAGEMENT



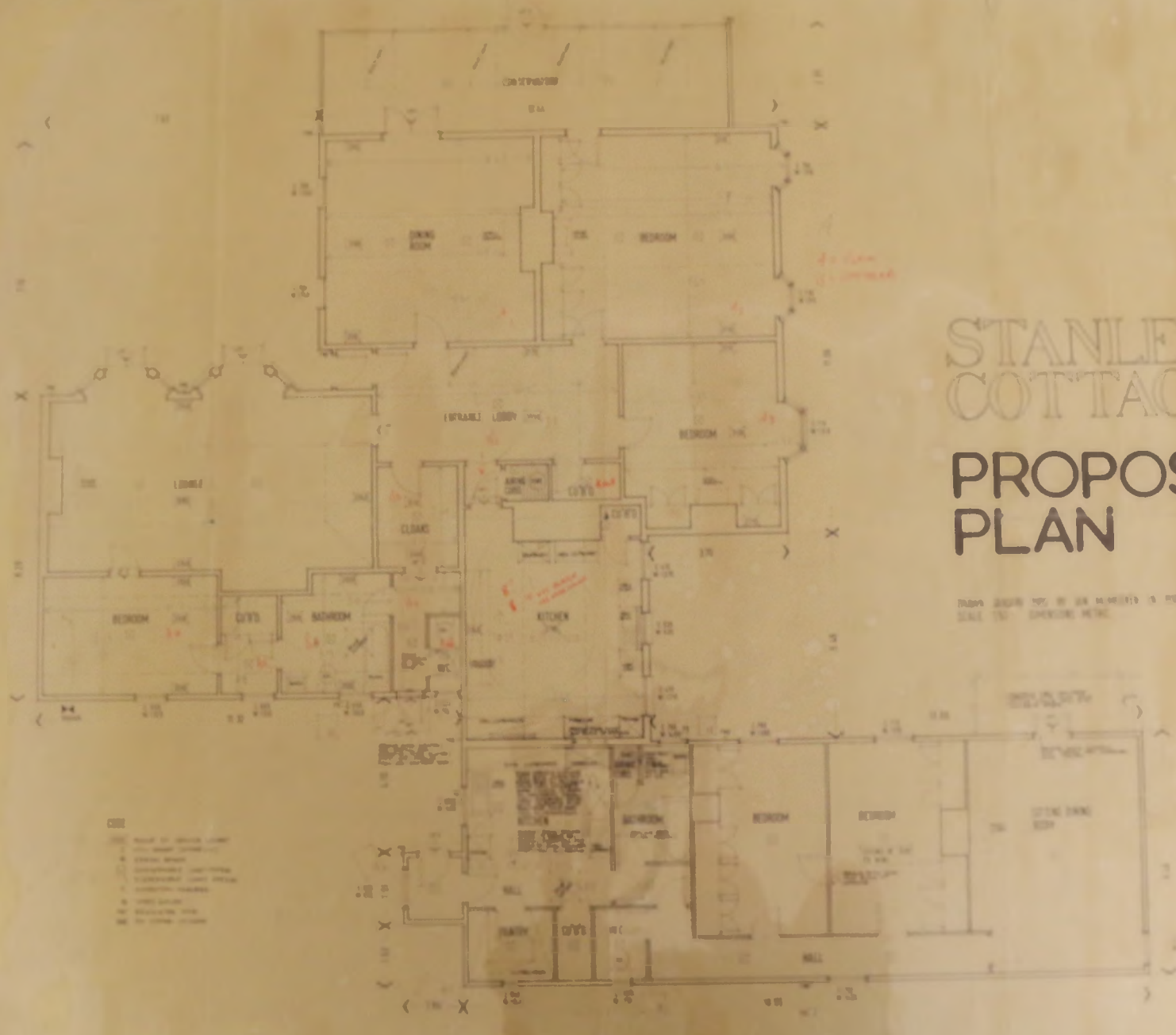
STANLEY COTTAGE

PROPOSED PLAN

DRAWN JANUARY 1980 BY IAN McMEEKEN IN PORT STANLEY
 SCALE 1/50 DIMENSIONS METRIC

- CODE
- PLACE TO BE DEMOLISHED
 - C.C. WALL
 - EXISTING WINDOW
 - EXISTING DOOR
 - EXISTING LIGHT FIXTURE
 - EXISTING CASEWORK
 - EXISTING CLOSET
 - EXISTING STAIR
 - EXISTING W.C.
 - EXISTING PANTRY
 - EXISTING HALL
 - EXISTING PORCH
 - EXISTING DRIVE

Existing plan
 in 1980



STANLEY COTTAGE

PROPOSED PLAN

PLAN DRAWN BY: [illegible] & [illegible]
SCALE TO: [illegible]

- 1. [illegible]
- 2. [illegible]
- 3. [illegible]
- 4. [illegible]
- 5. [illegible]
- 6. [illegible]
- 7. [illegible]
- 8. [illegible]
- 9. [illegible]
- 10. [illegible]