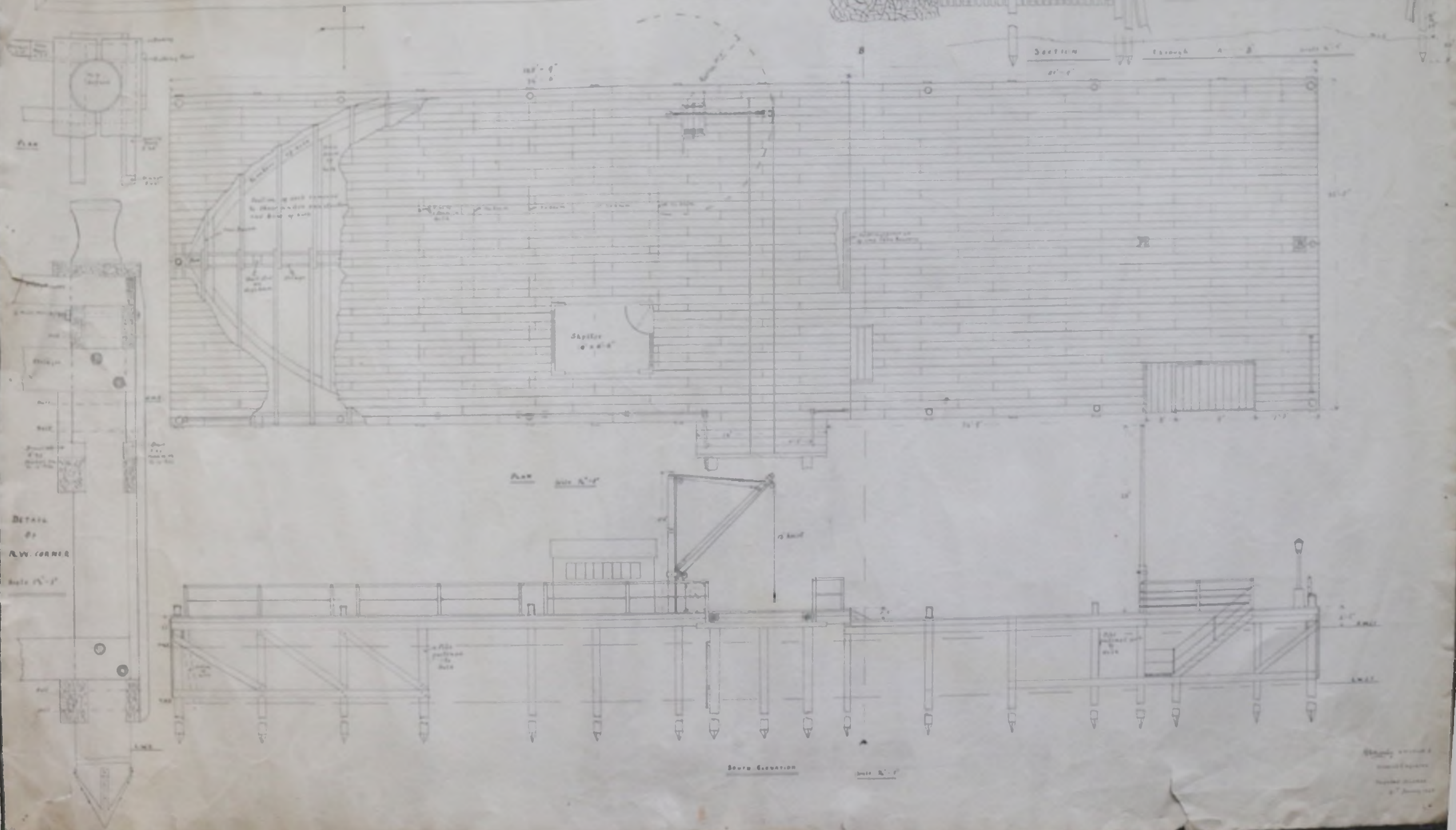


# PROPOSED DOCKYARD JETTY.

Drawing No. 21



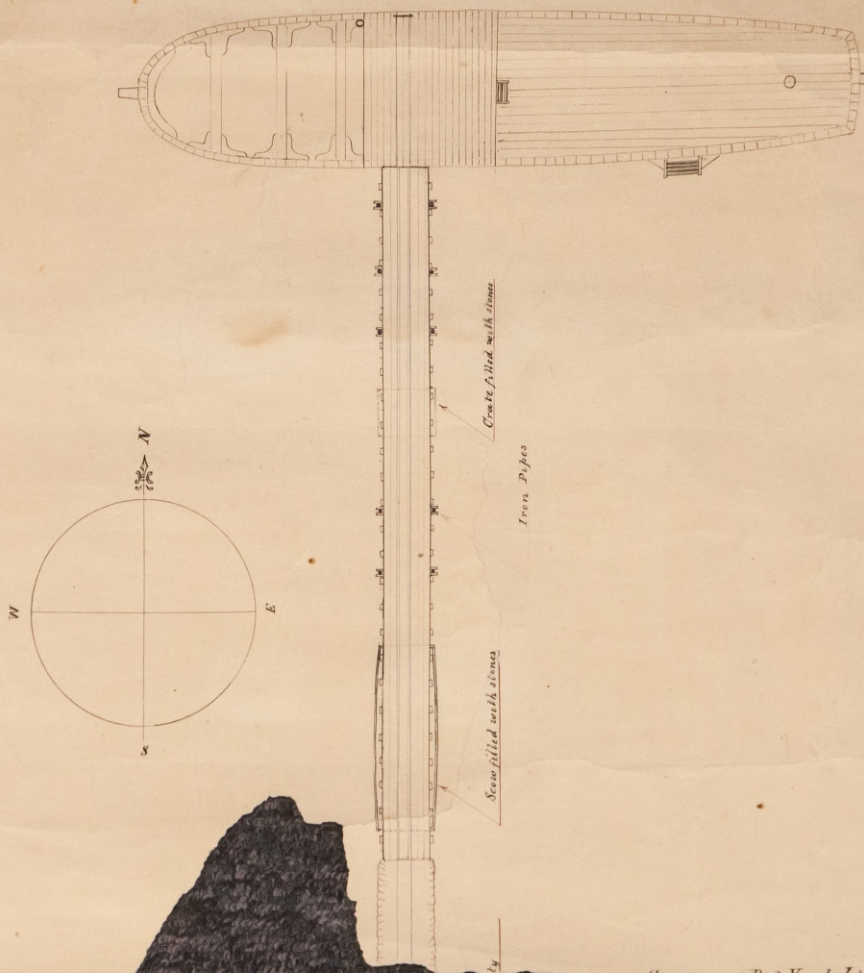
Scale Elevation

Scale 1/2\"

Shaded portions  
represent  
existing structure  
unless otherwise  
noted

GOVT DOCKYARD JETTY

MCI-41-DC-0002



Government Dock Yard Jetty

Scale 1/4" = 1'

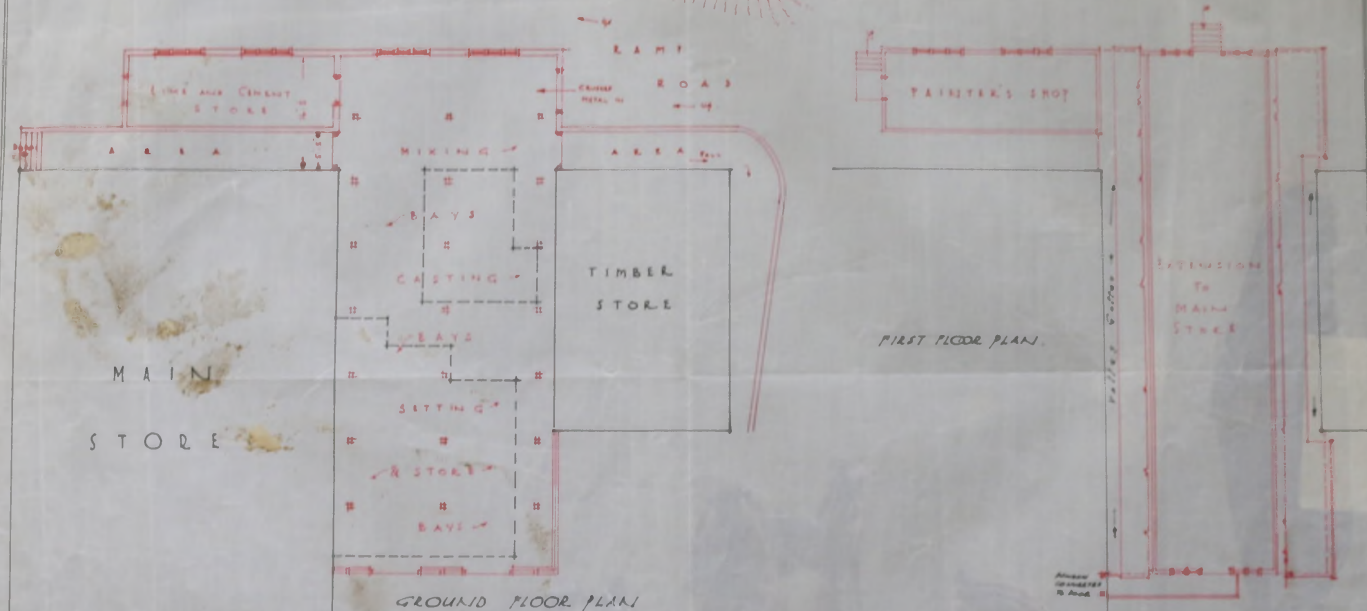
Cambridge

(18)

EST OFFICE

FALKLAND IS. GOVERNMENT, P.W.D.

PRE-CAST CONCRETE MOULDING SHOP & STORE.

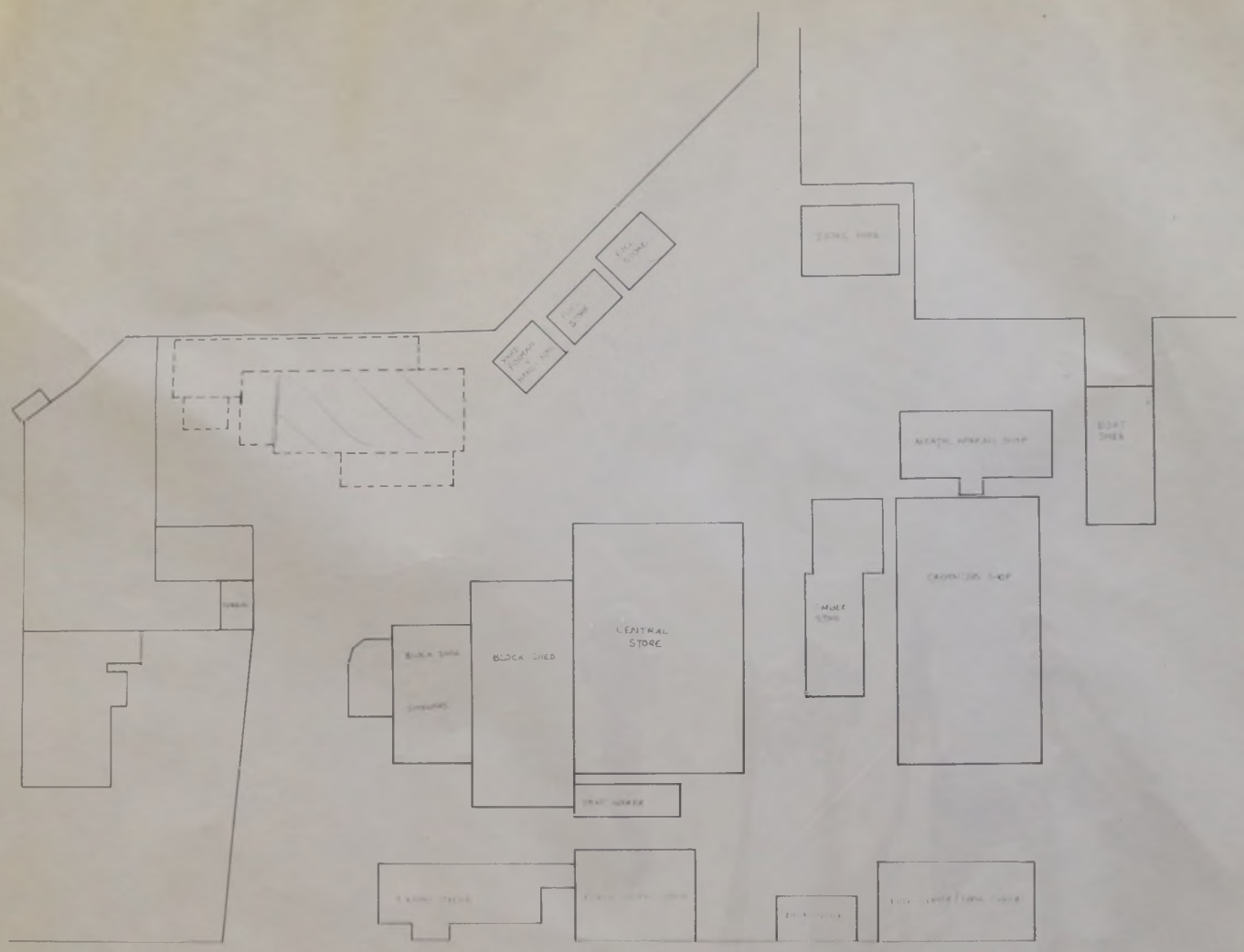


GARAGE

*Arthur Longhit*  
 A.S.I.C.A.  
 ARCHITECTURAL ENGINEER,  
 STANLEY,  
 JAN 1944



SCALE: EIGHT FEET TO ONE INCH

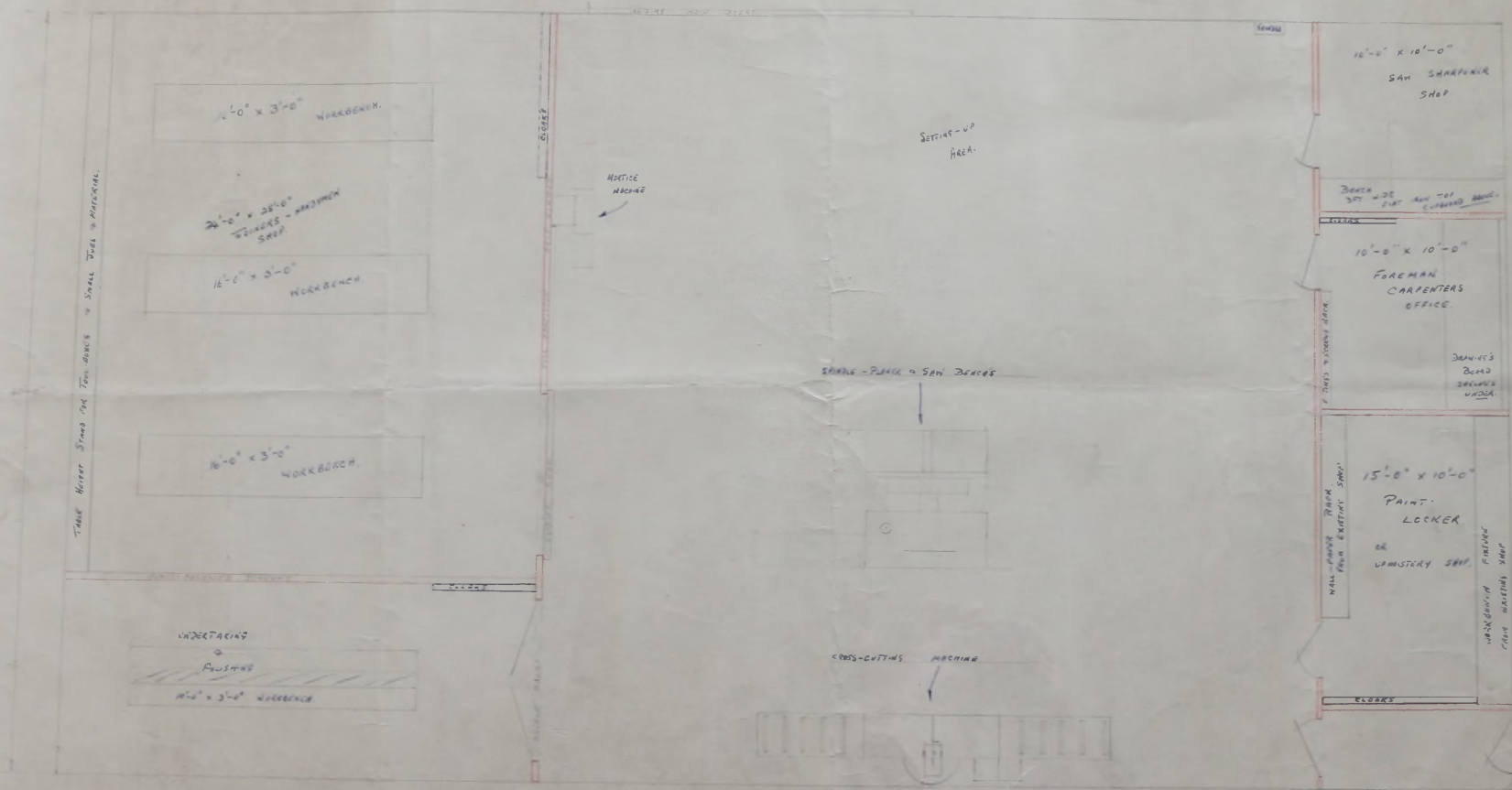


NOTES

ASSOCIATED DRAWINGS

APPROVED BY	DATE
DOCKYARD PUBLIC WORKS DEPARTMENT	
SCALE	DATE
1:200	
DRAWING NO.	
PROJECT NO.	
DRAWN BY	
CHECKED BY	

JOINERS SHOP PLAN FOR AVAILABLE SPACE ALL MOUNT + HEAT + PAINT AREA LOAD WELD UP



THREE HIGHER STAND FOR TOOL BOXES & SMALL TOOL MATERIAL

WALL PANEL PAINT AND EXISTING SHOP

WORKBENCH FINISH TOOL MATERIAL SHOP

JOHN'S BOAT SHEDS WOOD

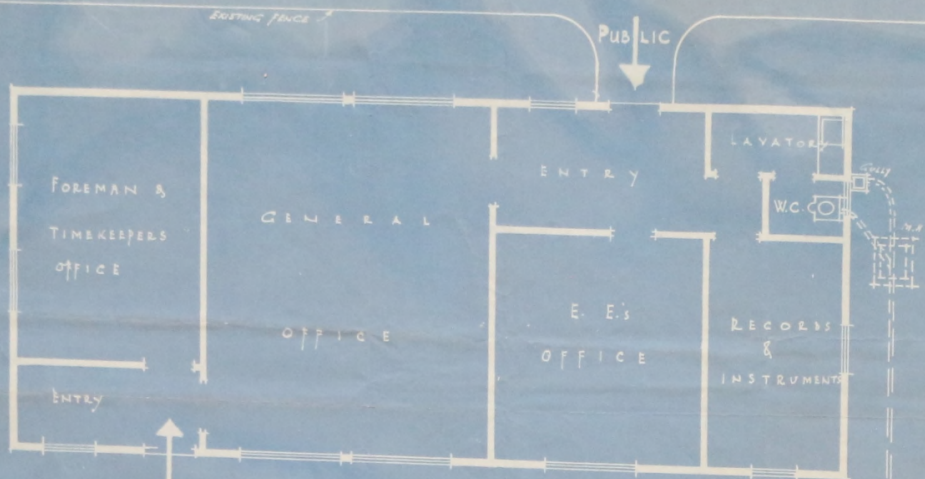
DOCK 30' WIDE 10' HIGH 10' DEPTH

DOCK 30' WIDE 10' HIGH 10' DEPTH

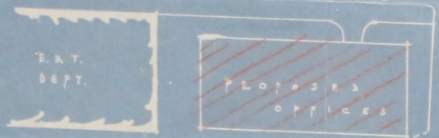
ELECTRICAL

16'-0"

PROPOSED TEMPORARY OFFICES FOR P.W.D  
IN HUT FROM ORDNANCE POINT. ERECTED IN DOCKYARD.



PLAN  
SCALE: 4.0 TO 1"



SITE PLAN  
Scale 1/16.0 TO 1"



Approved by  
 His Excellency  
 The Colonial Secretary  
 10.6.44

*Stanley B. V. 44*  
 A.I.B.A.  
 Ex-Eng:  
 STANLEY B. V. 44

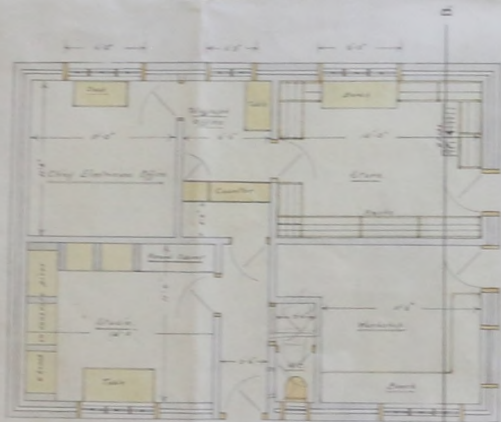
BROADCASTING BUILDING.



NORTH ELEVATION



SOUTH ELEVATION

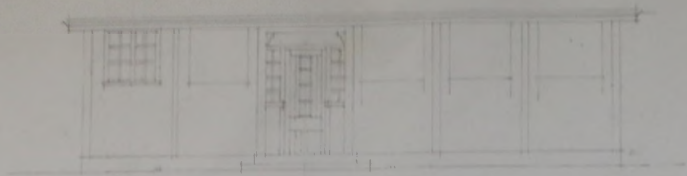


PLAN



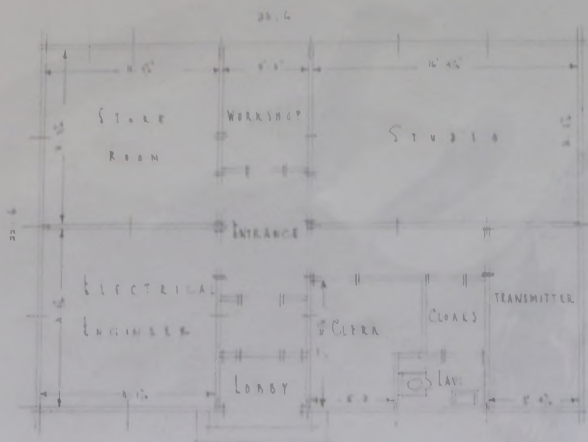
SECTION A-B

Scale  $\frac{1}{4}$  Inch = one Foot



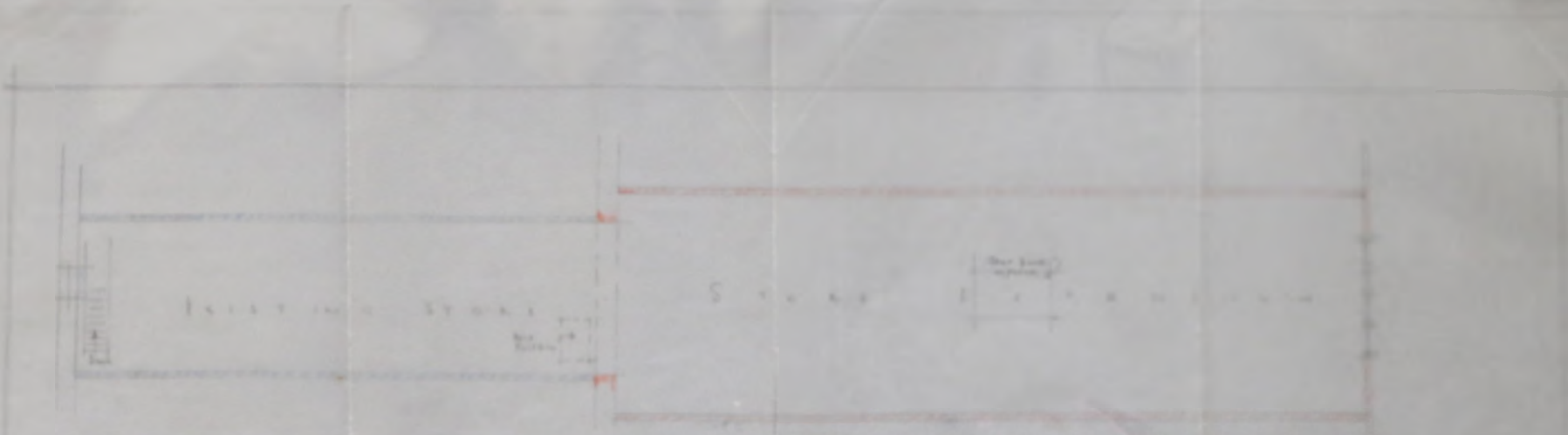
SKETCH PLAN  
FOR  
PROPOSED BROADCAST  
STATION

SCALE: 4" = 10'



*[Handwritten signature]*





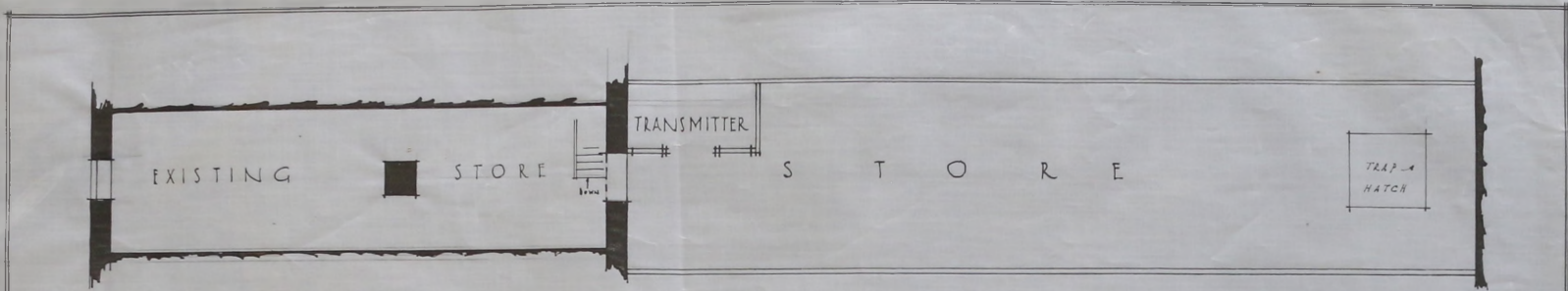
FIRST FLOOR



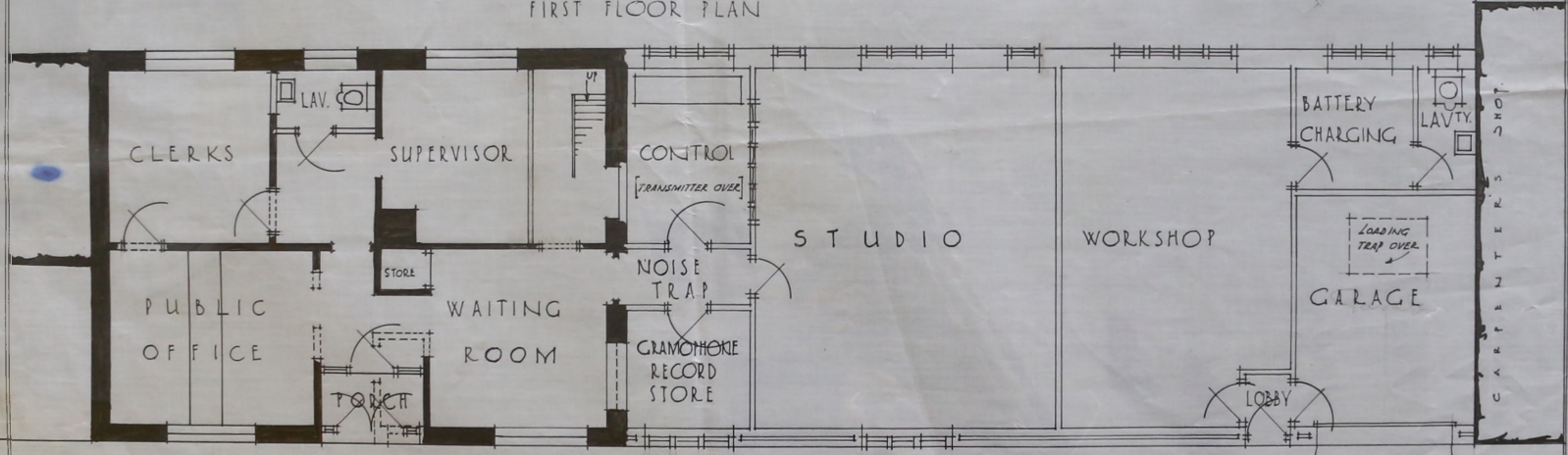
GROUND FLOOR

PROPOSED EXTENSION E.T DEPT SKETCH PLAN AUG 1945

NOTE



FIRST FLOOR PLAN

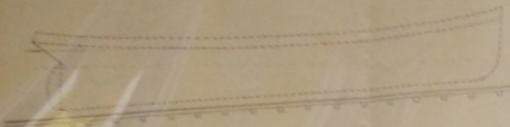


GROUND FLOOR PLAN.

FAULKLAND ISLANDS GOVERNMENT  
PROPOSED EXTENSION E. & T DEPARTMENT

SCALE: FOUR FEET TO ONE INCH.

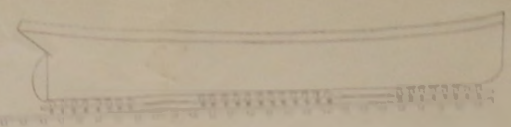
4218A  
EX. ENG. PND  
AUG 1946



High water, dry dock,  
low water, dry dock

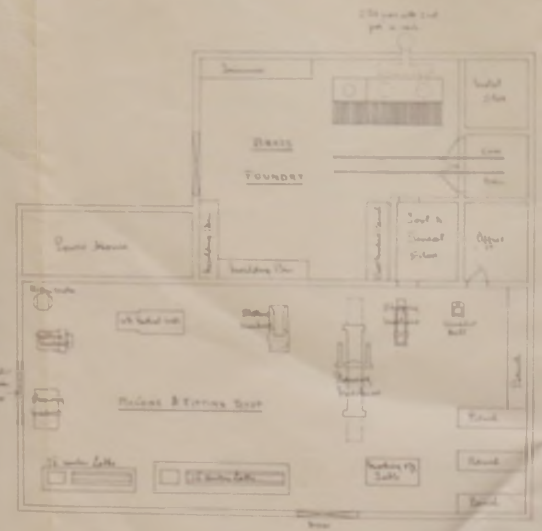
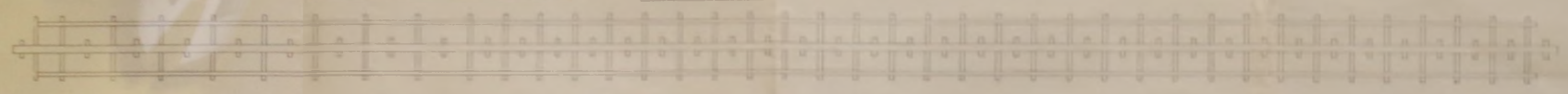
ELEVATION OF SLIPWAY

SCALE 1/2" = ONE FOOT



PROPOSED ARRANGEMENT OF CRADLES

PLAN OF SLIPWAY



SCALE 1/2" = ONE FOOT

FALKLANDS ISLANDS

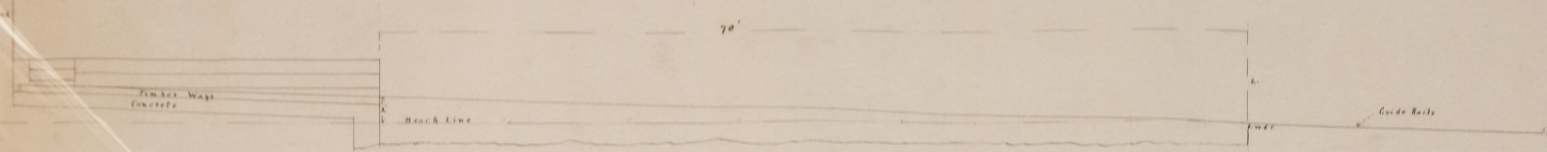
Requisition No 147

GENERAL ARRANGEMENT OF  
PROPOSED SLIPWAY WORKSHOP BUILDING

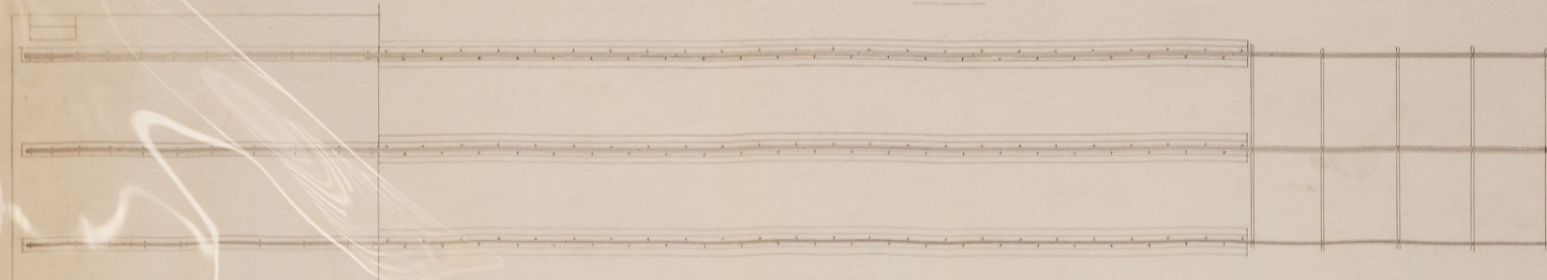


Drawing No 62

# CONCRETE WAYS FOR SLIPWAY

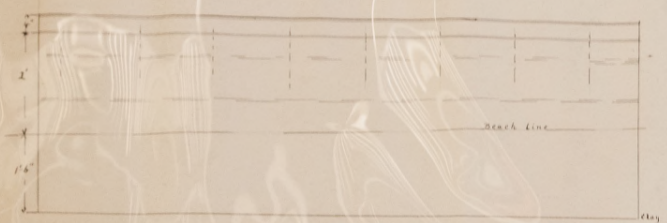


ELEVATION

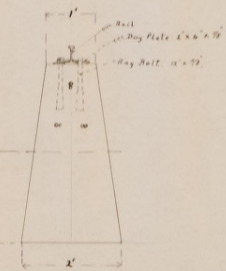


PLAN

Scale 1/8" = 1'



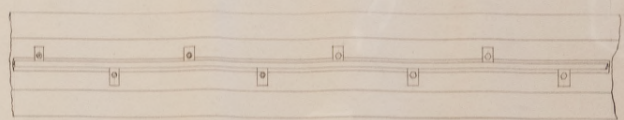
SIDE ELEVATION



END ELEVATION

SECTION OF 12'

Scale 1" = 1'

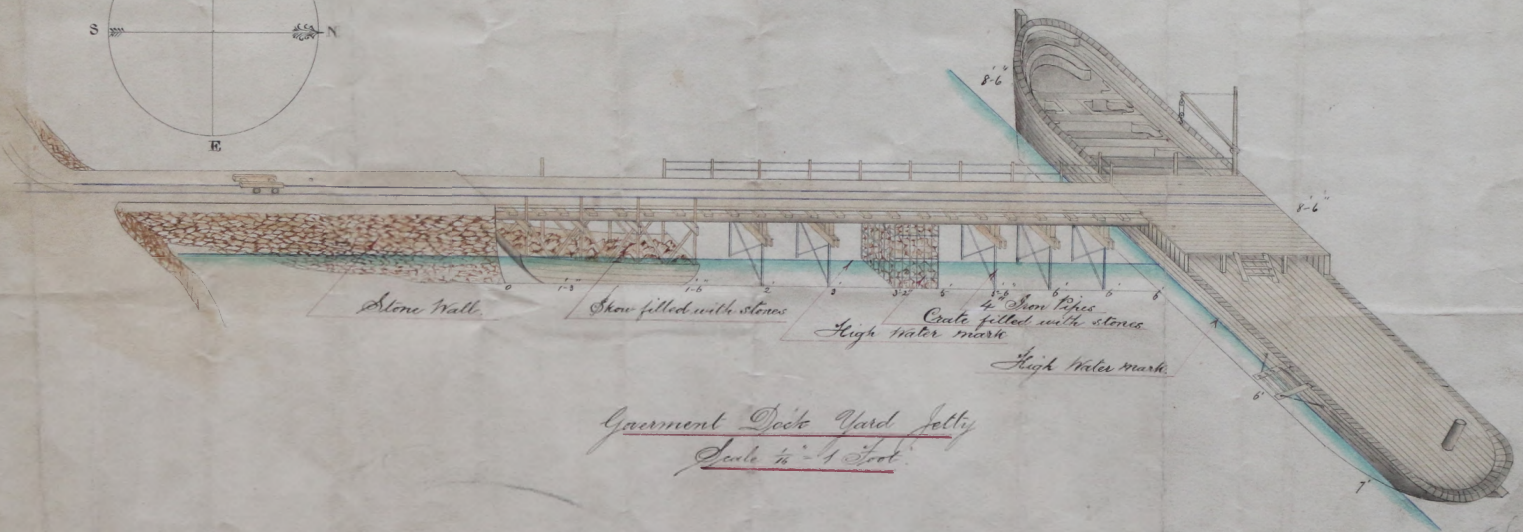
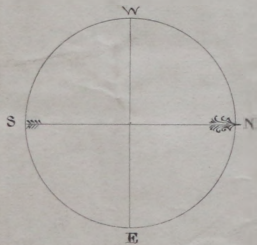


PLAN

Wm. A. ...  
 Civil Engineer  
 DRAWN BY ...  
 26 February 1925

Plan N<sup>o</sup> I

3/132



*Government Dock Yard Jetty*  
*Scale is 1/4 Inch*

8/21