

Messrs JACOMB WADE & COY. LONDON.  
BUNGALOW FOR THE FALKLAND ISLANDS  
GENERAL PLAN. DRAWING No T/545/1.

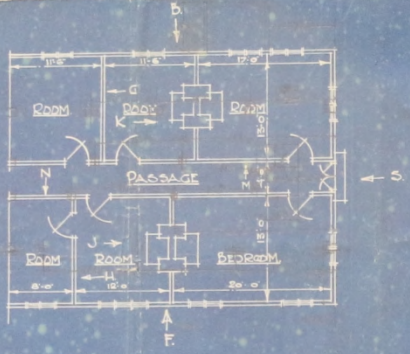
J.G.  
SAN SALVADOR  
PORT STANLEY



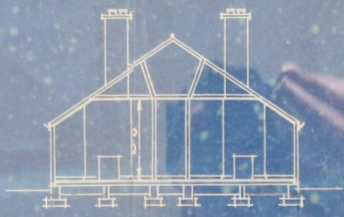
FRONT ELEVATION F.



BACK ELEVATION B.



PLAN



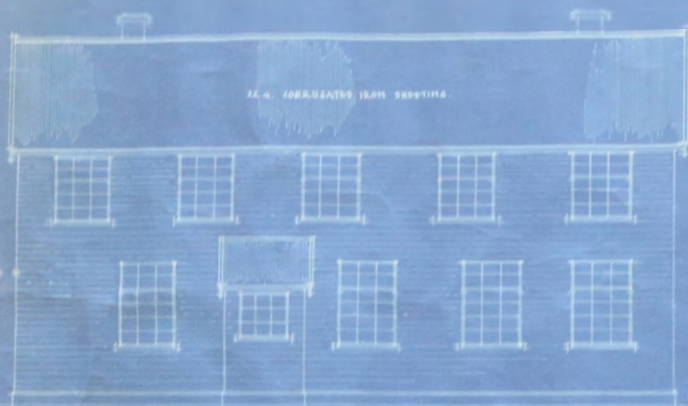
Cross Section



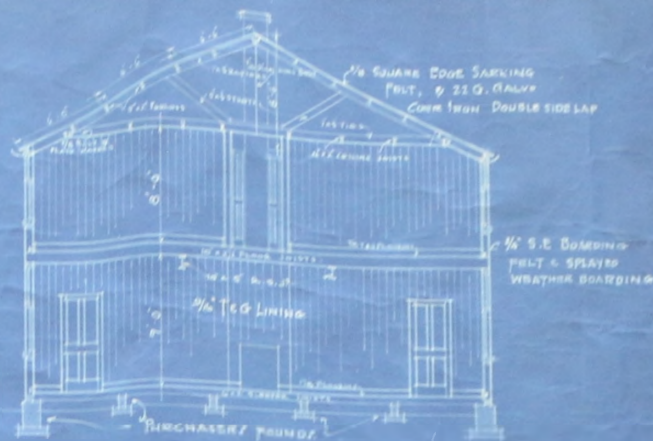
SIDE ELEVATION

WILLIAM BAIN & CO LTD  
LOGGIN WORKS  
GLASGOW SCOTLAND  
OCTOBER 1925.

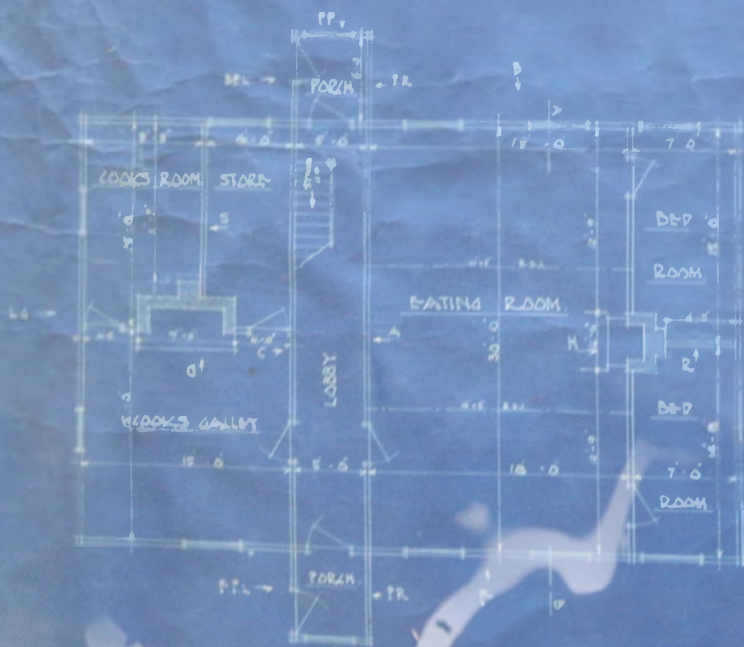
~ DUNGALOW - AT - DOUGLAS - STATION - FALKLAND - ISLANDS. ~  
 ~ FOR ~ 2 ~ GREENSHIELDS ~ PSA ~



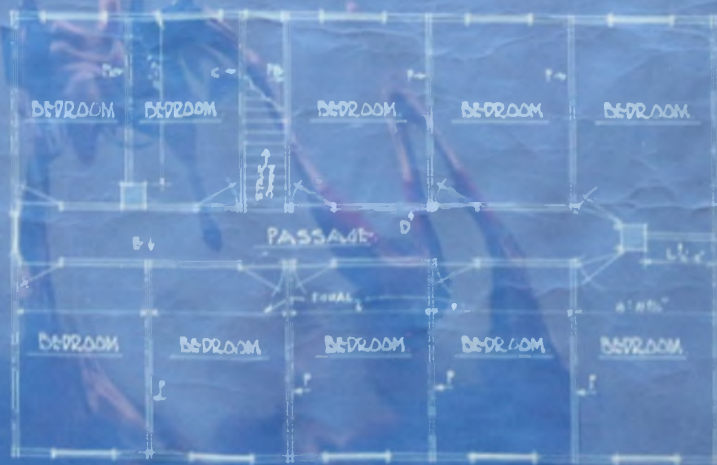
~ FRONT ELEVATION. ~



~ CROSS SECTION - A-B ~



~ GROUND FLOOR PLAN ~



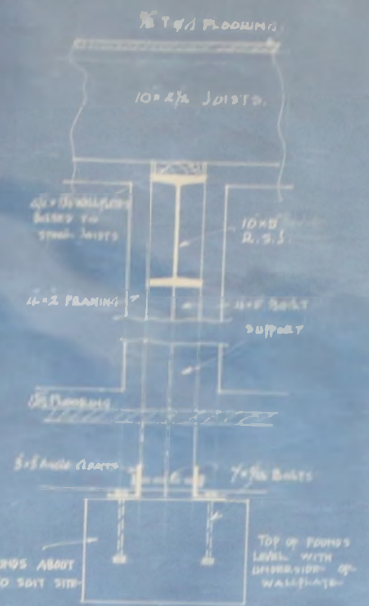
~ UPPER FLOOR PLAN ~

SCALE 1/8" = 1 FOOT

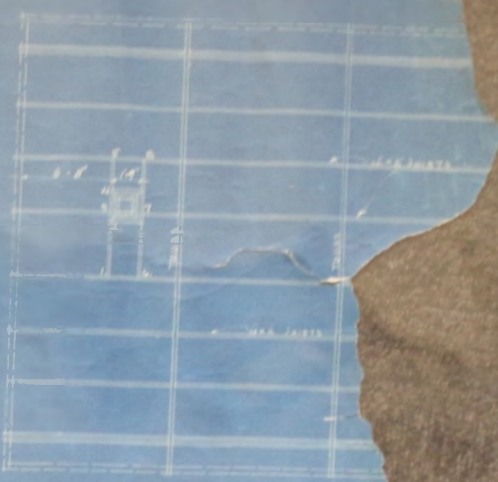
DOUGLAS STATION  
 PROPOSED HOUSE FOR R. GREENSHIELDS P.S.A.  
 AT DOUGLAS STATION FALKLAND ISLANDS



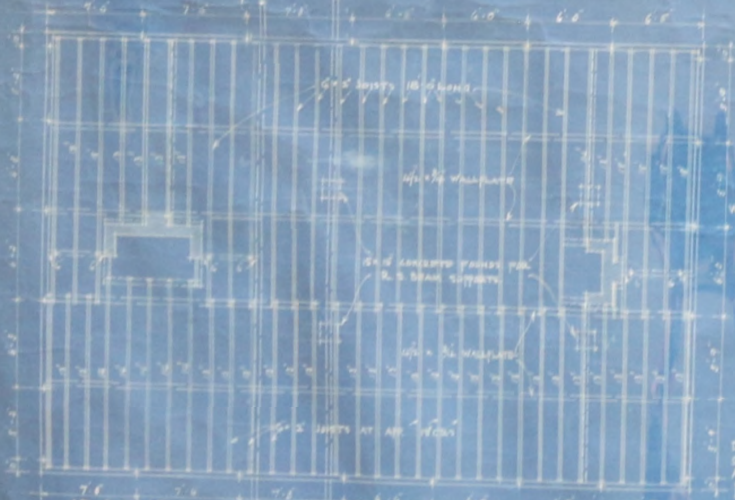
~ PLAN OF ROOF PURLINS ~



~ SECTION SHOWING SUPPORTS ~  
 ~ UNROOFED STEEL BEAMS ~



~ PLAN OF CEILING JOISTS ~



~ GROUND FLOOR ~



~ SECTION SHOWING EAVES AND DETAIL AT EAVES ~

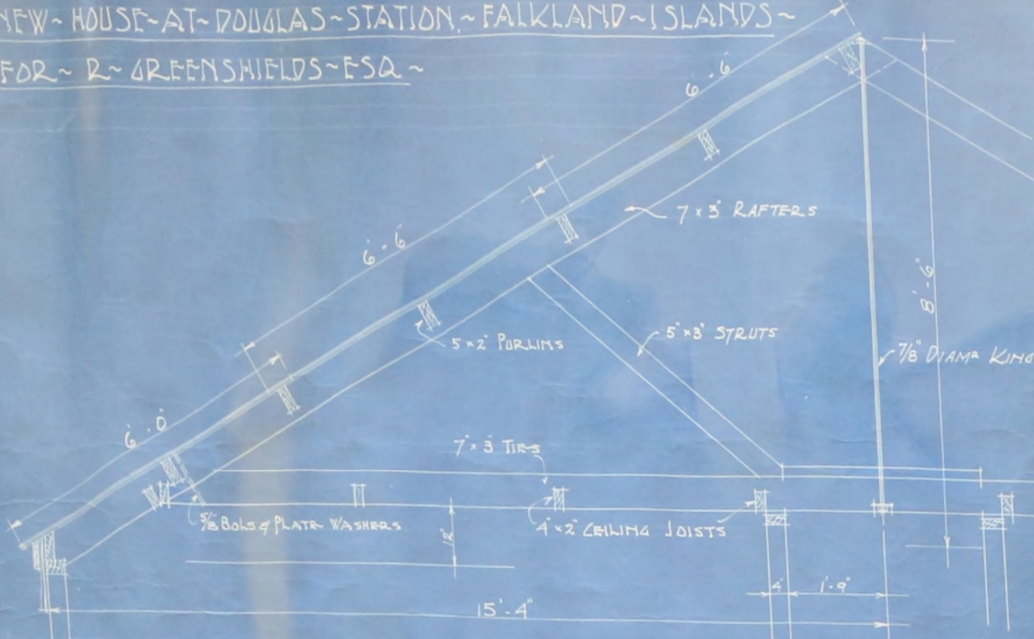


~ UPPER FLOOR PLAN ~

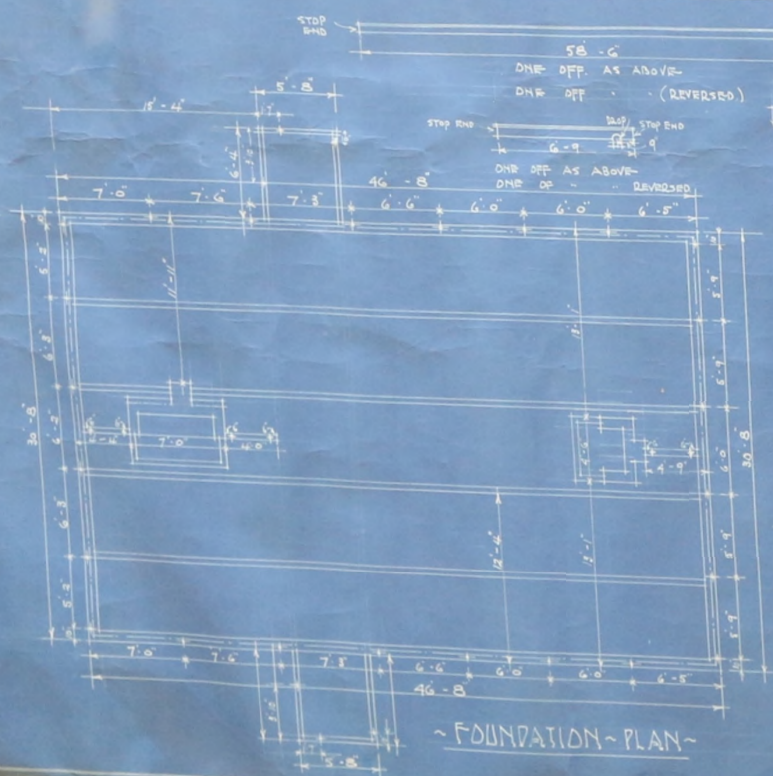
~ FLOOR FINISHING - GROUND ~  
 ~ BOTTOM - 500 - SHEET - 1991 ~

NOTE - ALL DIMENSIONS ARE OVER FRAMING

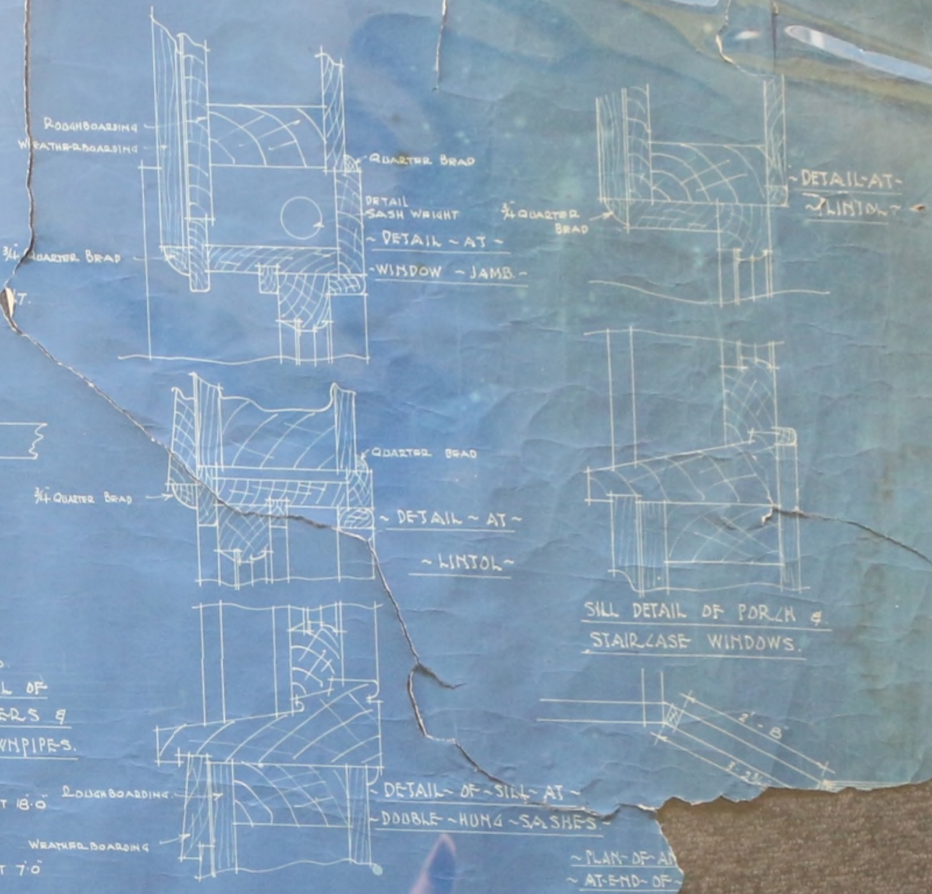
~ NEW HOUSE AT DOUGLAS STATION, FALKLAND ISLANDS ~  
 ~ FOR R. GREENSHIELDS, F.S.A. ~



~ SECTION SHOWING ROOF CONSTRUCTION ~



~ FOUNDATION PLAN ~



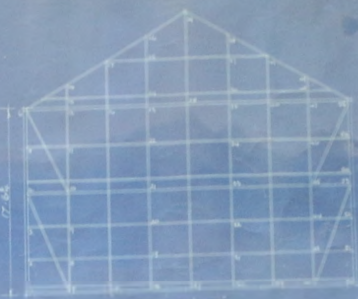
~ SECTION THRU STAIR FACING EATING ROOM ~

WILLIAM  
 LOCKHART  
 ARCHT.

~ HOUSE - AT - DOUGLAS - STATION -  
~ FALKLAND - ISLANDS - FOR -  
~ R. GREENSHIELDS - ESQ. ~



~ FRONT - ELEVATION - F ~



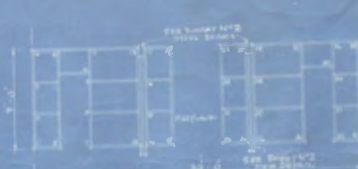
~ RIGHT - GABLE - R G ~



~ LEFT - GABLE - L G ~



~ BACK - ELEVATION - D ~



~ PARTITION - H ~



~ PARTITION - S ~



~ PARTITION - E ~



~ PARTITION - C ~



~ PARTITION - A ~



~ PARTITION - P ~



~ PARTITION - G ~

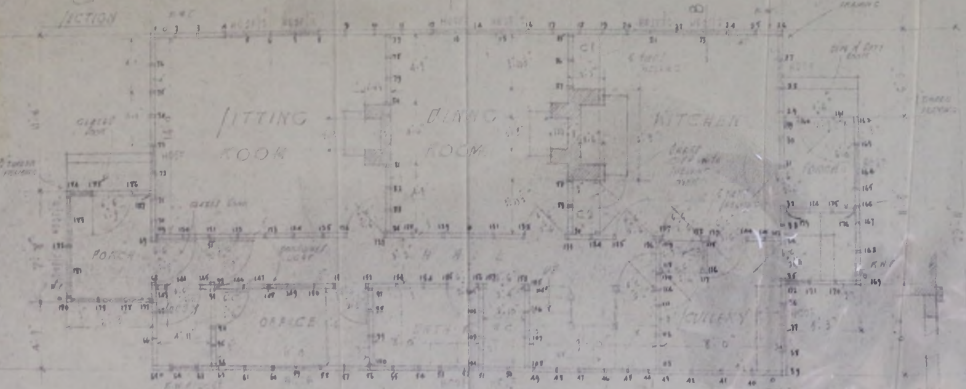
~ PORCH - OFF ~

~ M.L. ~

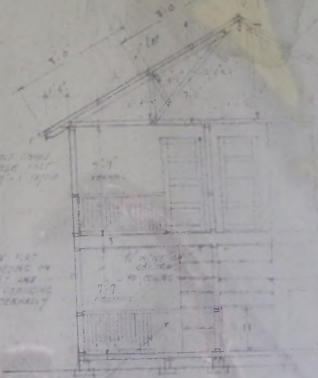
~ D.P.L. ~

WILLIAM BAIN & CO. LTD.  
LONDON, ENGLAND

PROPOSED HOUSE FOR EXPORT TO THE FALANTING PLAN  
CASE FOUR FEET TO ONE INCH FOR ALLY DOUGLAS STATION 17



GROUND FLOOR PLAN



ELEVATION  
7/20 1947  
11 S.W.S. DAY  
THIS PLAN IS FOR  
EXPORT TO THE FALANTING  
STATION

DRY AIR  
CONDITIONS  
ON  
WALLS  
&  
CEILING  
EXTERIORLY

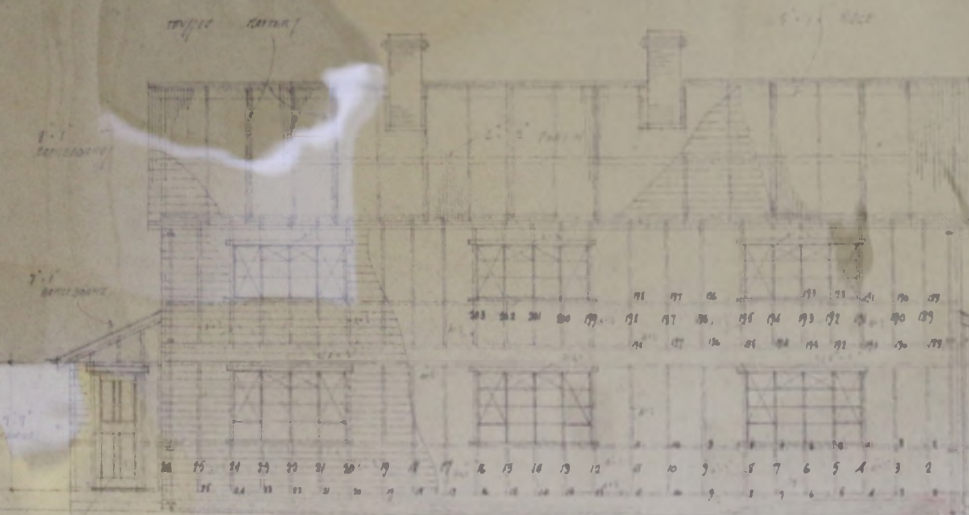
1/2" S.W.S. MATERIALS  
CAN BE USED IN  
CONSTRUCTION  
EXCEPT IN WALL  
CONCRETE

1/2" S.W.S. MATERIALS  
CAN BE USED IN  
CONSTRUCTION  
EXCEPT IN WALL  
CONCRETE

PROPOSED HOUSE FOR EXPORT TO THE FALKLAND ISLANDS

SCALE: FOUR FEET TO ONE INCH

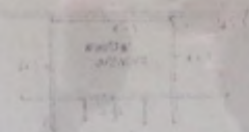
ERECTOR MATERIALS  
THE NUMBER OF MATERIALS IN THE  
LIST OF MATERIALS IS APPROXIMATE  
AND IS NOT TO BE USED AS A BASIS FOR  
ESTIMATION



EAST ELEVATION



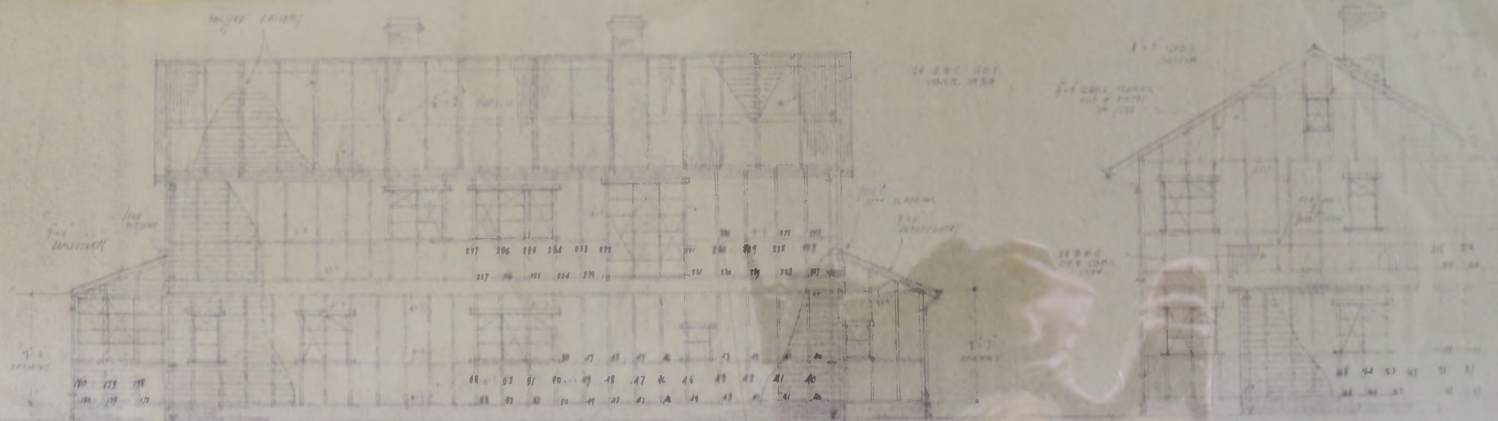
NORTH ELEVATION



PROPOSED HOUSE FOR EXPORT TO THE FALKLAND ISLANDS

SCALE: FOUR INCH TO ONE FOOT

100 1000  
SECTION  
THE FRAMING OF HOUSE  
PARTS OF THE DESIGN ARE  
1-2-3-4 1/4 IN. 1/4 IN. 1/4 IN.



WEST ELEVATION

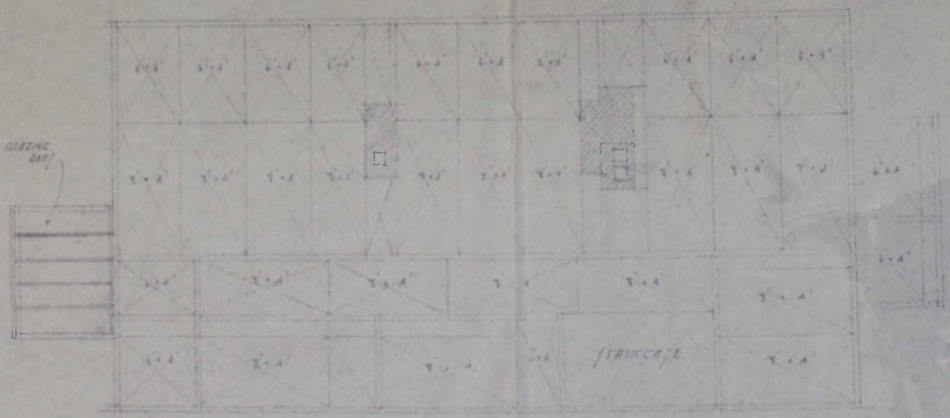
SOUTH ELEVATION

SCALE: FIVE INCHES TO ONE FOOT





PROPOSED HOUSE FOR EXPORT TO THE FALKLAND ISLANDS.  
FOR MEYER DOUGLAS STATION LTD



1/2 IN. INSULATING BOARDS  
 REQUIRED

N° 22	·	8 · 4	BOARDS
N° 24	·	6 · 4	BOARDS

PLAN SHOWING METHOD OF FIXING INSULATING BOARDS TO CEILING OF GROUND FLOOR ROOMS

DRAWING NO. 2584

PROPOSED HOUSE FOR EXPORT TO THE FALKLAND ISLANDS.  
FOR MAPPIER DOUGLAS STATION 112



1/2" INSULATING BOARDS  
REQUIRED

N 22 - 1 x 2 1/2" 2000'

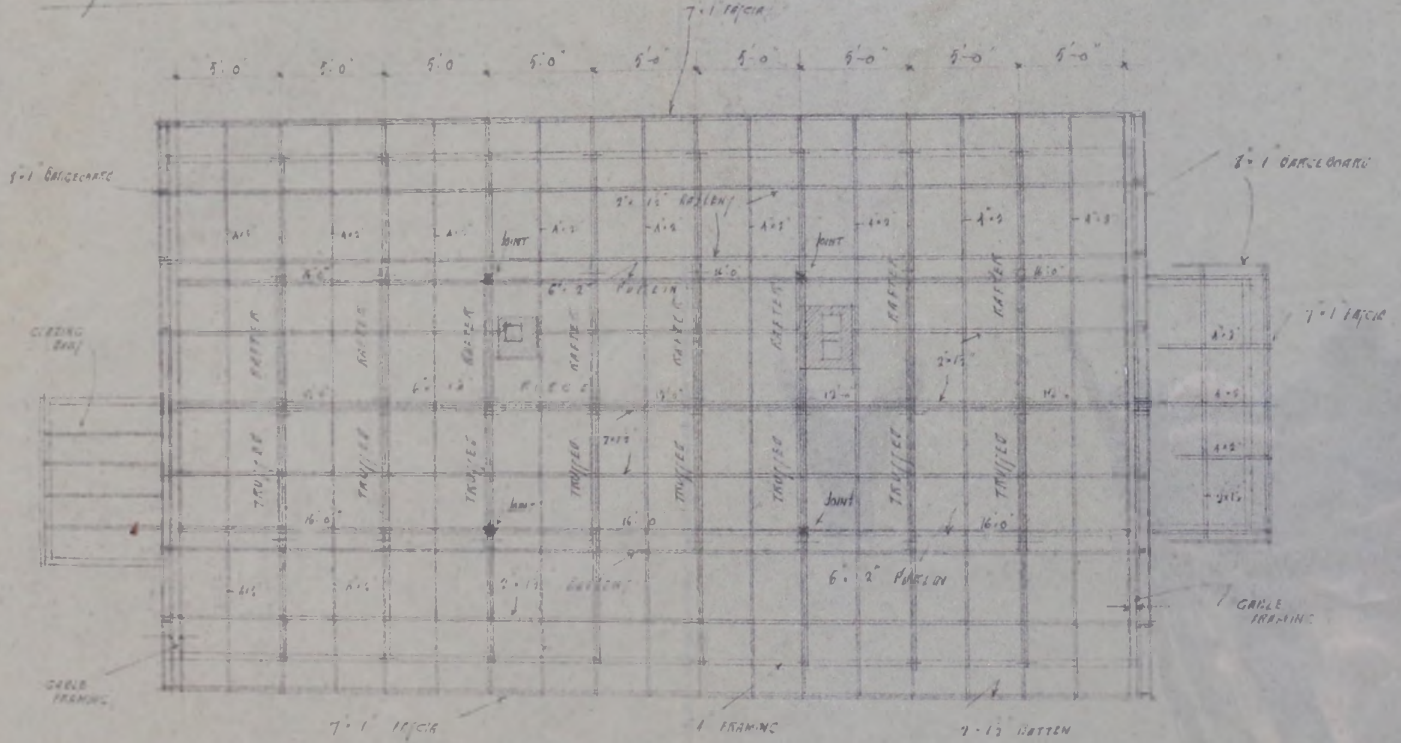
S 26 - 1 x 2 1/2" 2000'

PLAN SHOWING METHOD OF FIXING INSULATING BOARDS

TO WALLS OF 2 1/2" THICK CONCRETE

DOUGLAS STATION - PROPOSED HOUSE FOR EXPORT...

PROPOSED HOUSE FOR EXPORT TO THE FALKLAND ISLANDS.  
SCALE: FOUR FEET TO ONE INCH FOR MESS/ DOUGLAS STATION L-10



- Nº 8 A-2 TRUSSES RAFTERS
- Nº 28 A-2 INTERMEDIATE RAFTERS
- 6-11 PLATE
- Nº 4 12 FT
- 6-2 PURLIN
- Nº 6 16 FT
- 2-1 1/2 BATTEN (FOR CEILING)
- 600 FT RUN
- A-2 RAFTERS (LEAN TO)
- Nº 6 7 FT

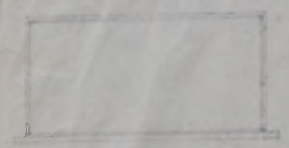
PLAN / HEAVING TRUSSED RAFTERS, PURLIN, ETC

DRAWING Nº 2381

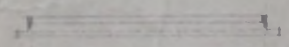


DOUGLAS STATION - PROPOSED HOUSE FOR EXPORT...

PROPOSED HOUSE FOR EXPORT TO THE TAIWAN ISLANDS (PLANS) FOR MESSRS DOUGLAS STATION LTD  
HOUSE NO. 111-112-113 OF WINDOW FRAME

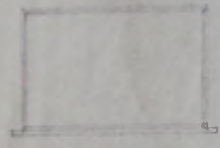


NO. 1 REQUIRED  
BEDROOM NO. 1  
NO. 2  
NO. 3

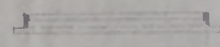


6' 7 1/2"

PLAN

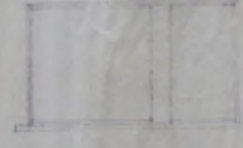


NO. 3 REQUIRED  
BEDROOM NO. 4



6' 0"

PLAN

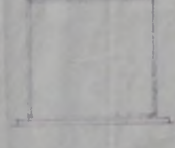


NO. 5 REQUIRED  
LIVING ROOM & W.C.  
BATH ROOM & W.C.

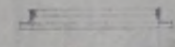


6' 3 1/4"

PLAN

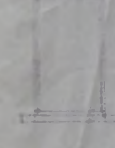


NO. 7 REQUIRED  
BEDROOM NO. 2  
LANDING (HALLWAY)  
CULLINARY  
OFFICE  
HATCH 6' x 30" DIA.

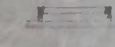


6' 7 1/2"

PLAN



NO. 9 REQUIRED  
BEDROOM NO. 1  
BEDROOM NO. 3  
LOBBY

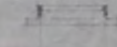


6' 3"

PLAN

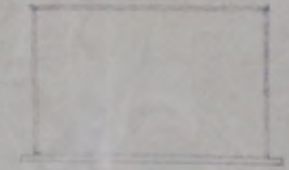


NO. 11 REQUIRED  
ROOF TERRACE  
LAVATORY  
CUM WASH PAN

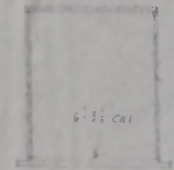


6' 3"

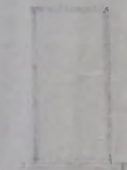
PLAN



NO. 13



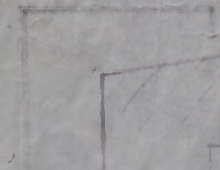
NO. 14 REQUIRED



NO. 15 REQUIRED



NO. 16 REQUIRED



NO. 17 REQUIRED



DIMENSIONS GIVEN ARE TAKEN BETWEEN THE REBATES

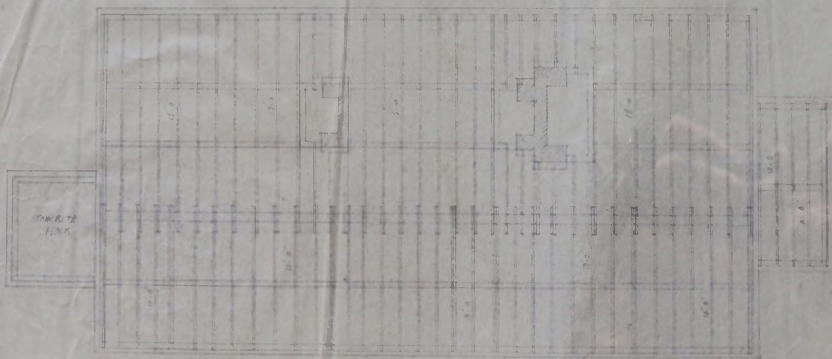
GLASS

GIVE 7/16"

PROPOSED HOUSE FOR EXPORT TO THE FALKLAND ISLANDS

SCALE FOUR FEET TO ONE INCH

FOR MR RYAN DOUGLAS STATION LTD



Area 1077 sq ft

1st flr - 1577

2nd flr - 2117

3rd flr - 677

3rd flr 1077 sq ft

270 sq ft

4th flr 1077 sq ft

60 sq ft

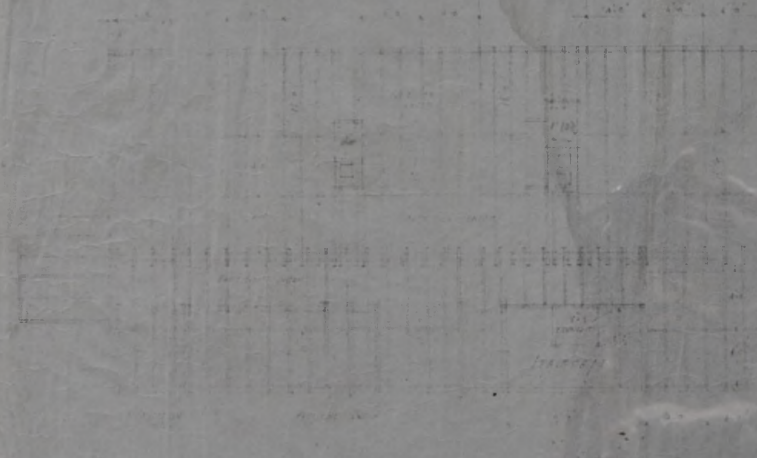
Scale 4 feet to 1 inch

WILSON & WILSON LTD  
 107, MARK LANE, LONDON, E.C.3

PLAN DRAWING GROUND FLOOR 10/11/51

DRAWING N° 2246

PLAN OF THE FACILITY TO THE FACILITY...  
ON THE SOUTH SIDE OF...



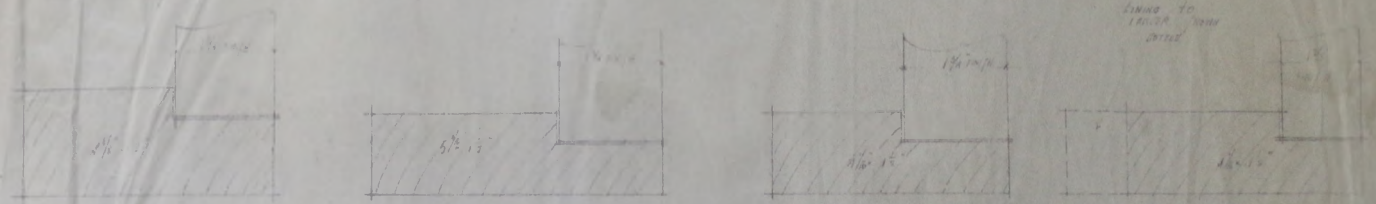
1st floor plan  
2nd floor plan  
3rd floor plan  
4th floor plan  
5th floor plan  
6th floor plan  
7th floor plan  
8th floor plan  
9th floor plan  
10th floor plan

1st floor plan  
2nd floor plan  
3rd floor plan  
4th floor plan  
5th floor plan  
6th floor plan  
7th floor plan  
8th floor plan  
9th floor plan  
10th floor plan

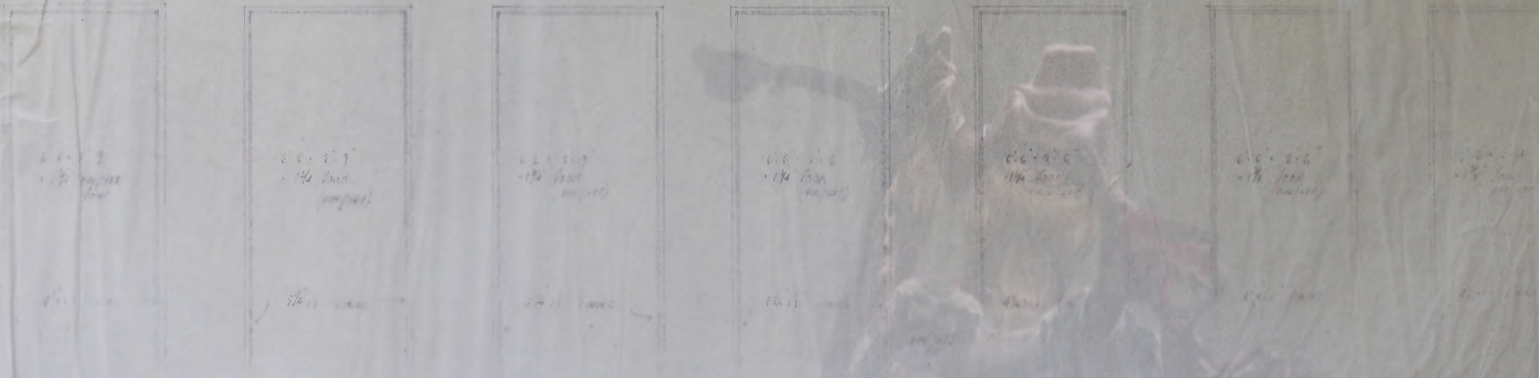


SECTION OF HOUSE FOR EXPORT TO THE BALKANS / LAND NO. 1000 / 1000  
DETAIL B FOR LINING

LINE TO  
LARGE  
DITTO



FULL FIRST DETAIL



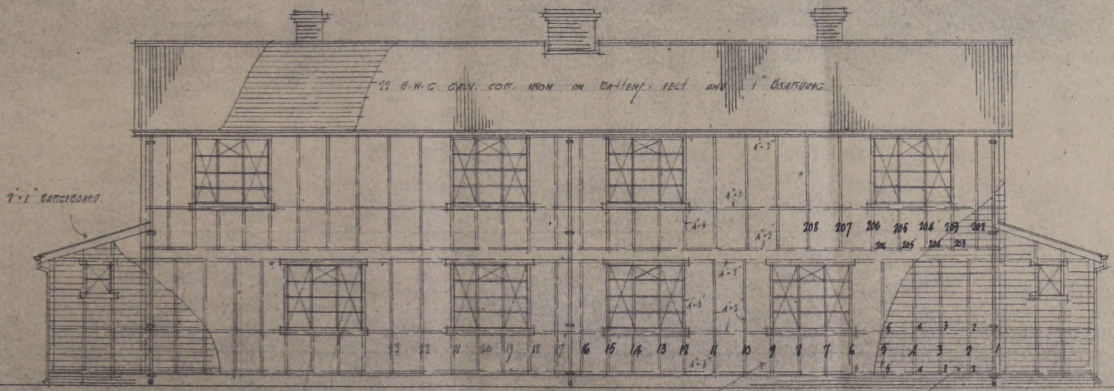




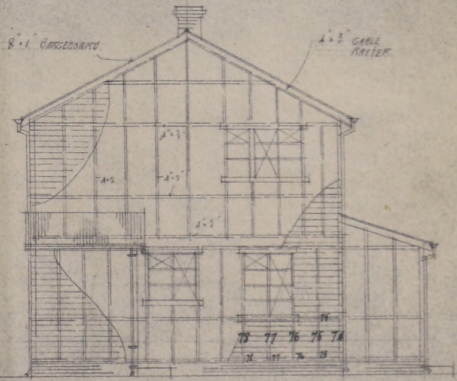
PAIR OF SEMI-DETACHED HOUSES FOR EXPORT TO THE FALKLAND ISLANDS.

SCALE: FOUR FEET TO ONE INCH.

FOR MESSRS DOUGLAS STATION LTD.



WEST ELEVATION.

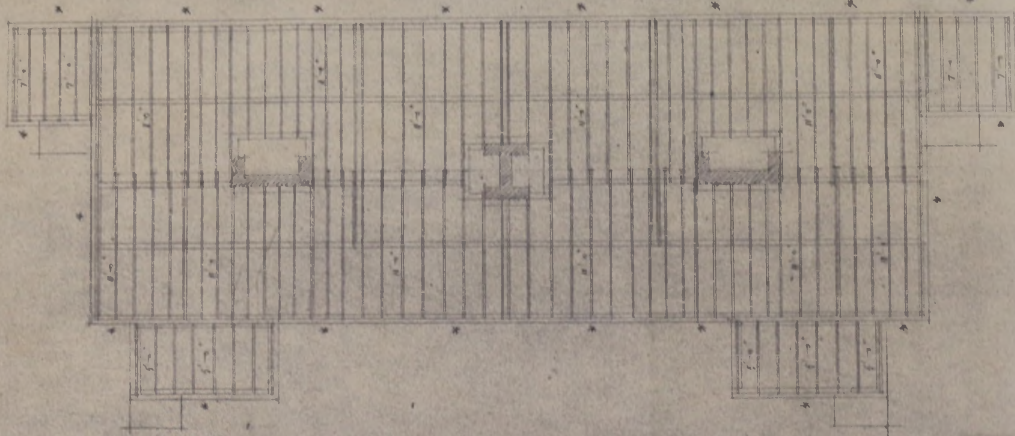


SOUTH ELEVATION.

WILLIAM BARBOUR LTD  
 ARCHITECTS & ENGINEERS  
 SOUTH BEHND ABEY  
 LONDON S.W.11

PAIR OF SEMI-DETACHED HOUSES FOR EXPORT TO THE FALKLAND ISLANDS

SCALE: FOUR FEET TO ONE INCH FOR NEELY DOUGLAS STATION LTD



PLAN SHOWING GROUND FLOOR

A-2 FLOOR JOISTS

N° 22 4 1/2"

N° 22 10 1/2"

N° 22 9 1/2"

N° 18 9 1/2"

3'-2" WALL PLATE

100 FT RUN

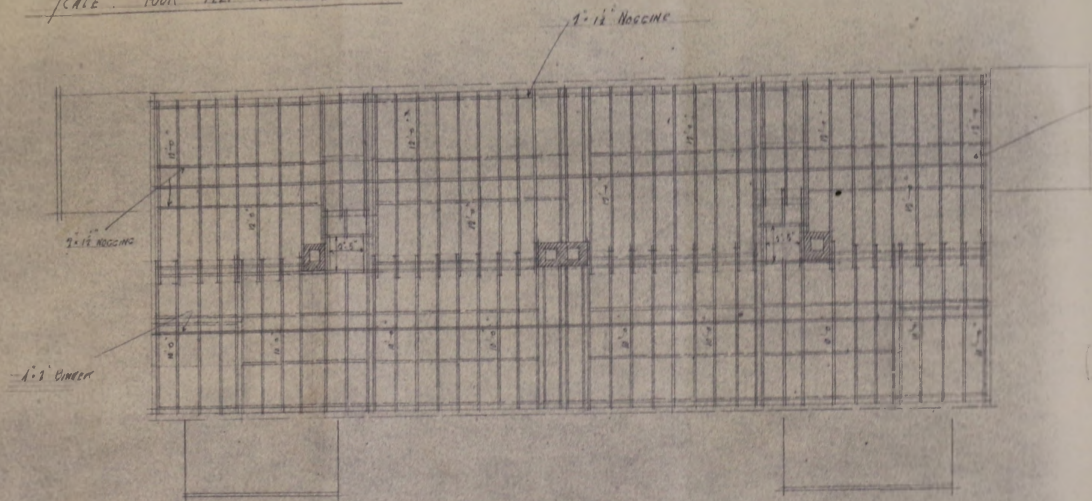
DRAWING N° 23667

DOUGLAS STATION - PAIR OF SEMI-DETACHED HOUSES...

MC3-25-DO-0022

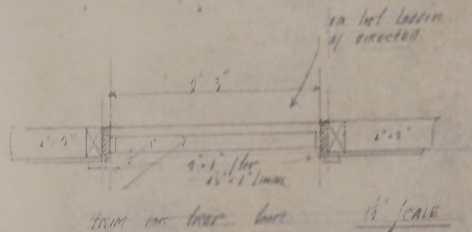
PAIR OF SEMI-DETACHED HOUSES FOR EXPORT TO THE FALKLAND ISLANDS FOR MILITARY STATION USE

SCALE: FOUR FEET TO ONE INCH



4" x 8" CEILING JOIST

50	12 FT.
50	10 FT.
6	14 FT.

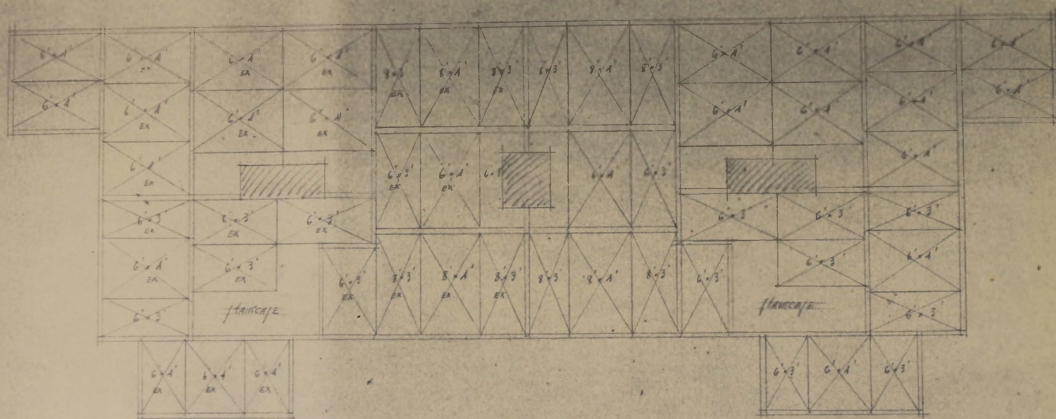


PLAN SHOWING CEILING JOIST

DRAWING NO 23665

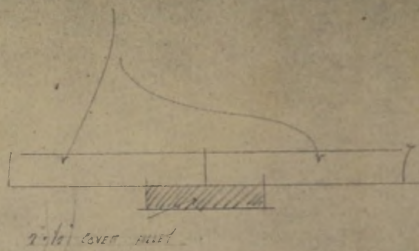
PAIR OF SEMI-DETACHED HOUSES FOR EXPORT TO THE FALKLAND ISLANDS FOR NAVAL LOGGING STATION etc

SCALE: FOUR FEET TO ONE INCH



1/2 INFLATION BOARDING

- N° 6 - 1-4 (MEET)
- N° 12 - 8-3
- N° 16 - 6-3
- N° 26 - 6-1

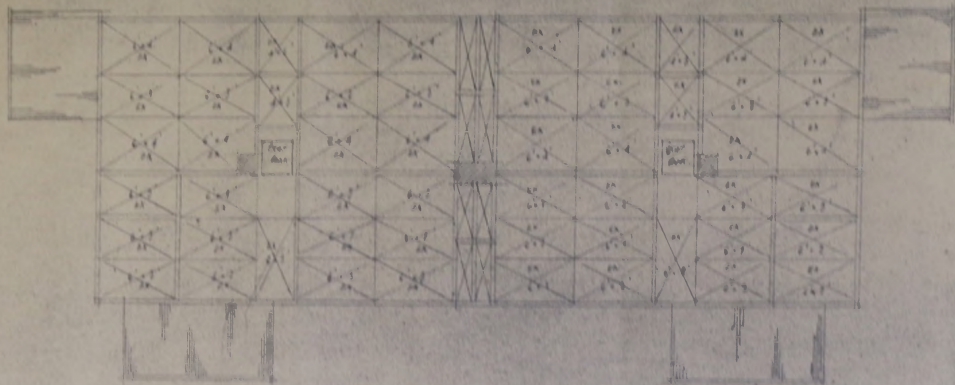


PLAN SHEWING CEILING TO GROUND FLOOR ROOMS.

DRAWING N° 13666

PAIR OF SEMI-DETACHED HOUSES FOR EXPORT TO THE BALK AND ISLANDS. FOR SUPPLY BOOBY NESTS 1/4

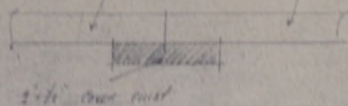
SCALE: FOUR INCHES TO ONE FOOT



1/2 insulation boarding

N° 10 - 2' x 2' (part)

N° 14 - 2' x 2' (part)



PLAN SHEWING CEILING TO FIRST FLOOR ROOMS

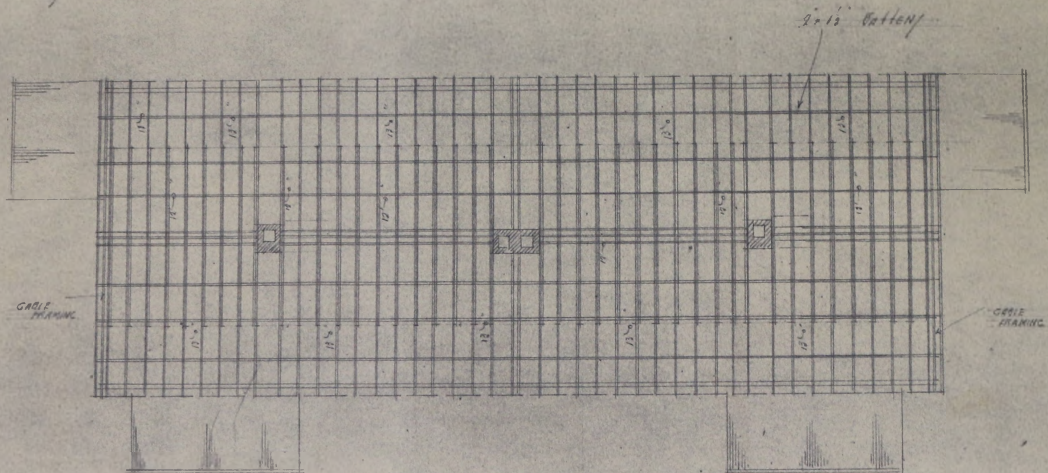
WILLIAM HAINSON LTD.  
ARCHITECTS & ENGINEERS  
10, SOUTH BUCKINGHAM  
LONDON, W. 1.

DRAWING N° 23667



PAIR OF SEMI-DETACHED HOUSES FOR EXPORT TO THE FALKLAND ISLANDS 100 sq ft Douglas Station Ltd

SCALE: FOUR FEET TO ONE INCH



A-2 RAFTERS

100 - 19 ft

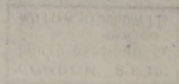
A-2 COLLARS

12 - 14 ft

2x12 Battens

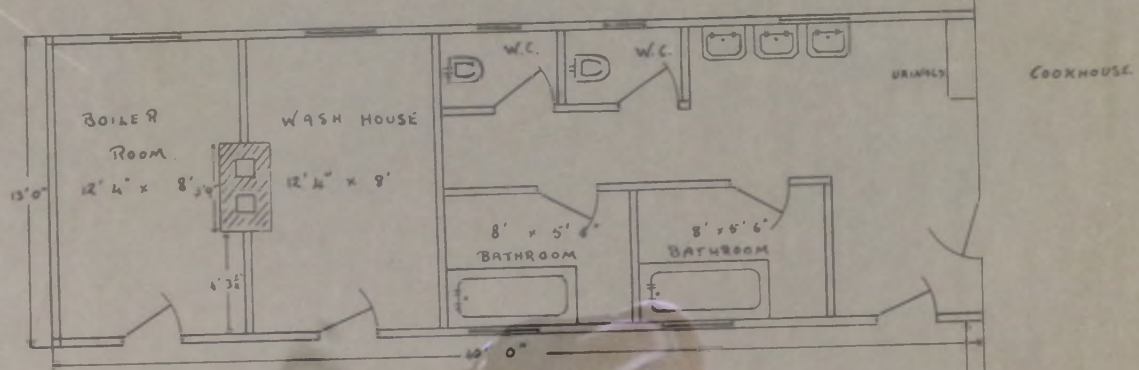
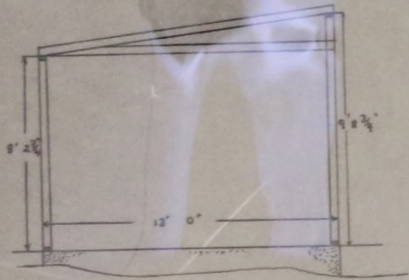
800 ft RUN

ROOF PLAN / HEAVY RAFTERS



DRAWING NO 23668

PROPOSED EXTENSION TO DOUGLAS STATION COOKHOUSE.



Scale 1/4" = 1 ft.

29

T. WHITE  
19-11-59