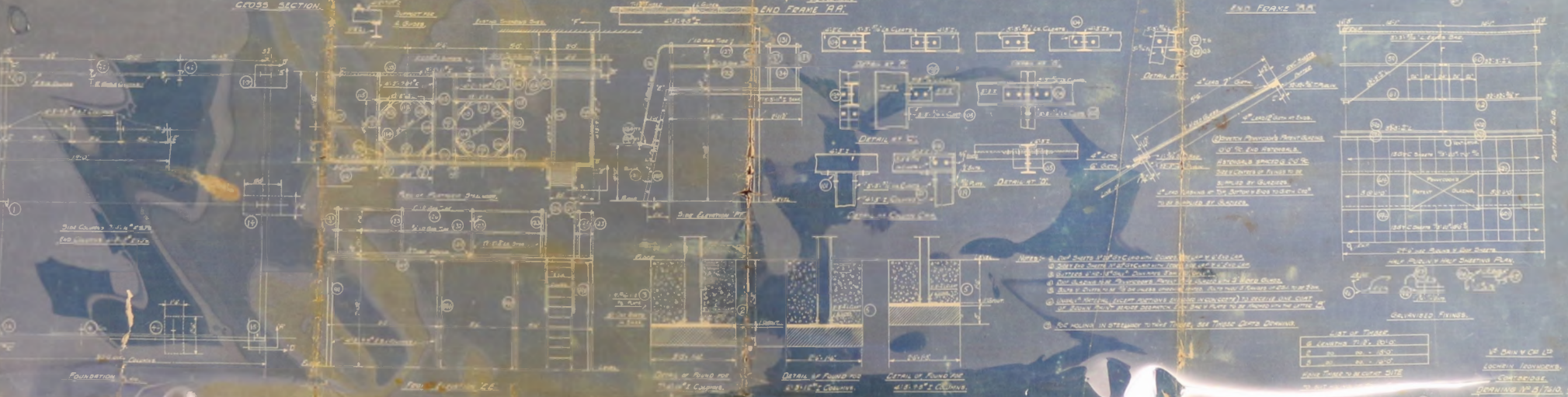
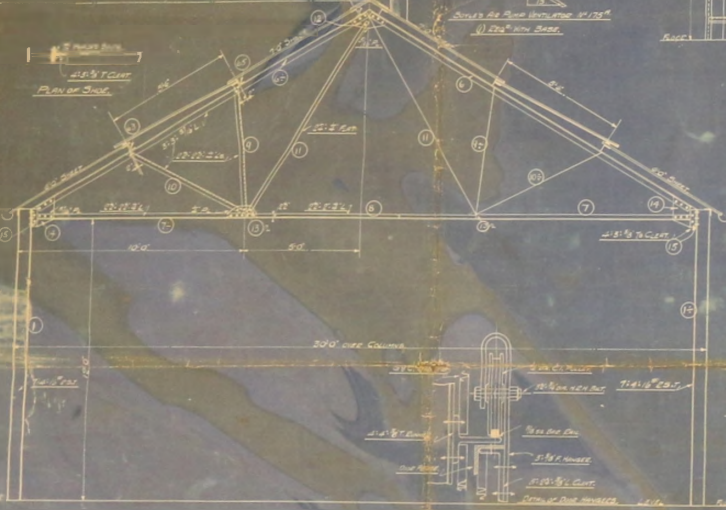
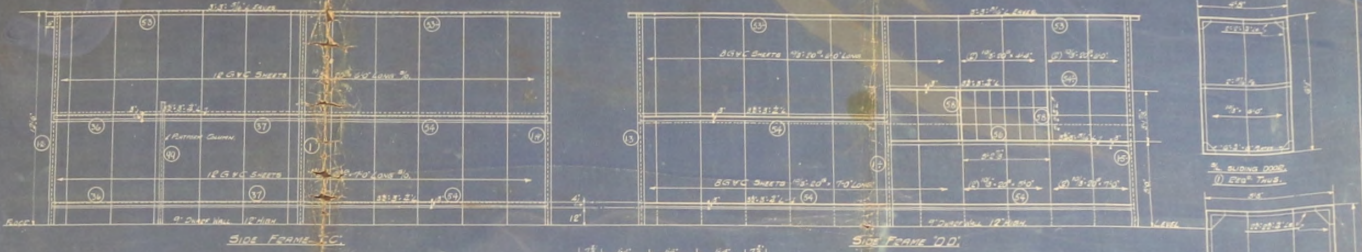
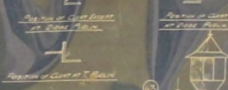


STEEL FRAMED BOILER SHED.  
ROBERT BLAKE E.S.A. - SCHMIDT.

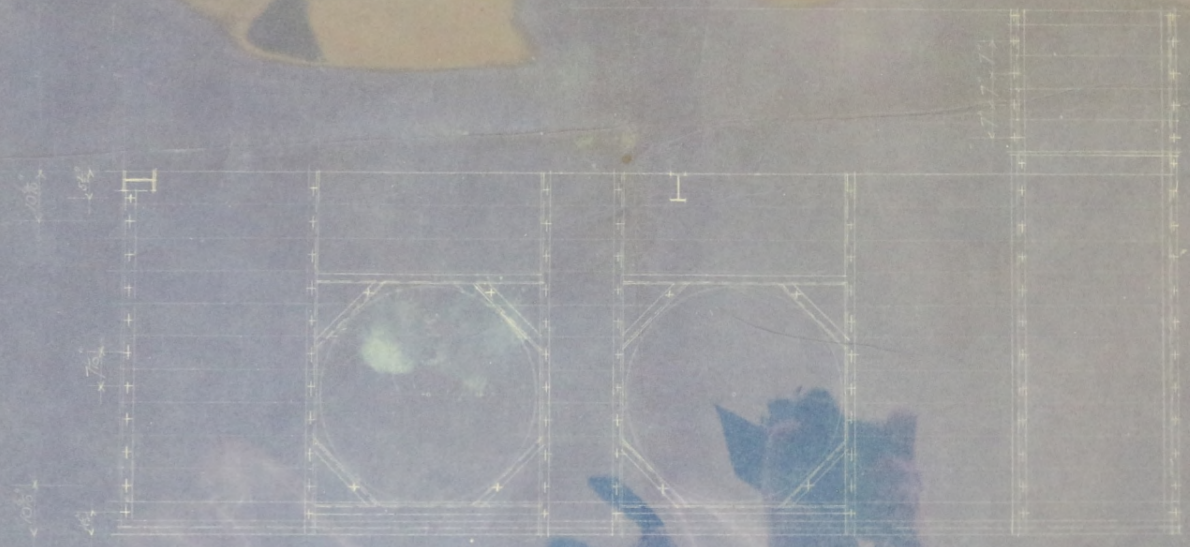
NO.	DESCRIPTION
01	DETAILS OF BOILER SHED
02	PLAN SHEETS
03	FOUNDATION NOTES



LIST OF THINGS

1	CONCRETE
2	STEEL
3	WOOD
4	GLASS
5	PAINT
6	ASBESTOS
7	INSULATION
8	ROOFING
9	WATER
10	ELECTRICITY
11	PLUMBING
12	MECHANICAL
13	HEATING
14	VENTILATION
15	AC
16	STAIRS
17	ELEVATORS
18	SCAFFOLDS
19	CRANES
20	CONSTRUCTION
21	SAFETY
22	TOOLBOX
23	WORKING
24	RESTROOMS
25	SHOWERS
26	LOCKERS
27	STORAGE
28	OFFICES
29	LABORATORY
30	WORKSHOP
31	PAINT SHOP
32	WELDING SHOP
33	BLACKSMITH SHOP
34	FORGE
35	ANVIL
36	TRIP HAMMER
37	DRILL PRESS
38	GRINDING WHEEL
39	WIRE CUTTING
40	FLAT
41	ROLLING MILL
42	SLIT ROLLER
43	REVERSE ROLLER
44	FLAT ROLLER
45	CONCRETE
46	STEEL
47	WOOD
48	GLASS
49	PAINT
50	ASBESTOS
51	INSULATION
52	ROOFING
53	WATER
54	ELECTRICITY
55	PLUMBING
56	MECHANICAL
57	HEATING
58	VENTILATION
59	AC
60	STAIRS
61	ELEVATORS
62	SCAFFOLDS
63	CRANES
64	CONSTRUCTION
65	SAFETY
66	TOOLBOX
67	WORKING
68	RESTROOMS
69	SHOWERS
70	LOCKERS
71	STORAGE
72	OFFICES
73	LABORATORY
74	WORKSHOP
75	PAINT SHOP
76	WELDING SHOP
77	BLACKSMITH SHOP
78	FORGE
79	ANVIL
80	TRIP HAMMER
81	DRILL PRESS
82	GRINDING WHEEL
83	WIRE CUTTING
84	FLAT
85	ROLLING MILL
86	SLIT ROLLER
87	REVERSE ROLLER
88	FLAT ROLLER
89	CONCRETE
90	STEEL
91	WOOD
92	GLASS
93	PAINT
94	ASBESTOS
95	INSULATION
96	ROOFING
97	WATER
98	ELECTRICITY
99	PLUMBING
100	MECHANICAL

— STEEL FRAMED BUILDING FOR —  
 — ROBERT BLAKE ESQ. SOMERSET —  
 — PLAN OF TIMBER PLATFORM —

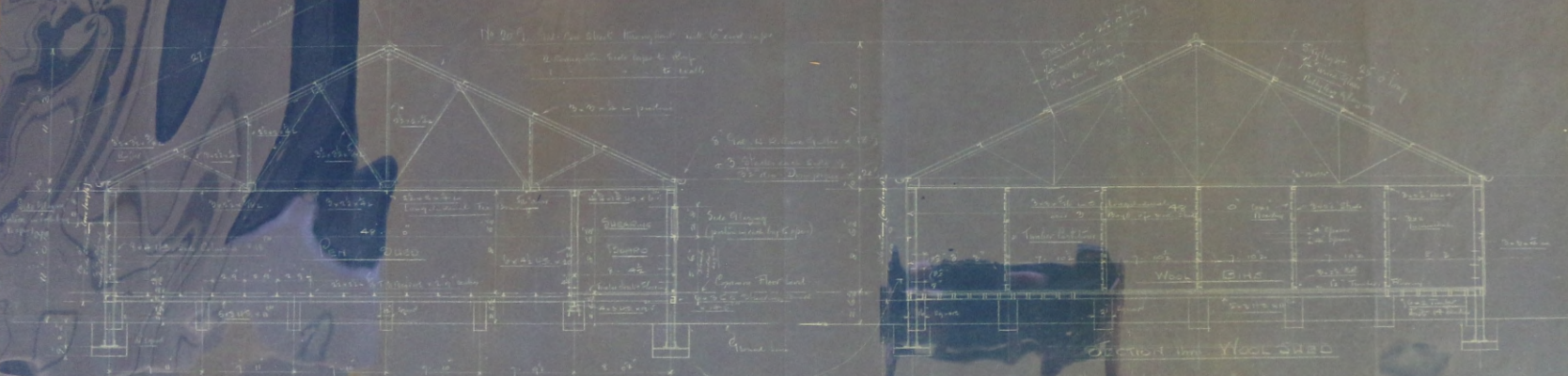


ALL HOLES FOR 2" BOLTS.

Drawing No. C/7410/2

ROBERT BLAKE Esq.

SHEARING SHED FOR THE FARMLAND ISLANDS



SECTION THROUGH SHEARING SHED

SECTION THROUGH WOOL SHED

Note: All these drawings of Shed & Wool Shed  
 made for the purpose of building  
 them to order. It is long & narrow  
 timber frame, which is built up.

WILLIAM BAKER Esq.  
 STRUCTURAL ENGINEER  
 110 CANAL ST. LONDON E.C.

DRAWING A° E 581. L. 11 April 1921



STRUCTURE & TIMBER TRUSS POSITIONS IN WOOL SHED

Note: All timber for Wool Shed trusses, to be placed on ground edge, as shown.





ROBERT BLAKE ESQ.

SHEARING SHED FOR THE FALKLAND ISLANDS



SECTION thru PEN SHED & SHEARING BOARD

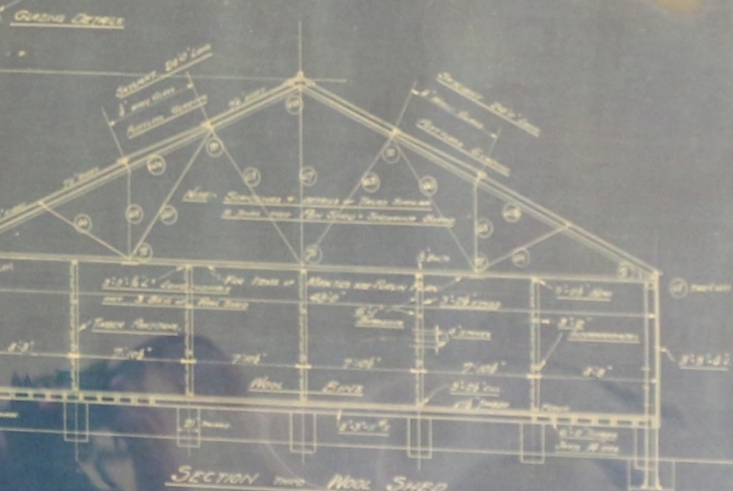
Note: All floor joists to be spaced 12" on center. Also see 1/2" dia. pipe at opening. There is also a 2" dia. pipe at opening. Floor joists.



Detail A



Detail B



SECTION thru WOOL SHED



ELEVATION of TIMBER FRAMED PARTITION of WOOL BINS

Note: All timber to be well seasoned & to be placed in 100% shade.

# ROBERT BLAKE [SQ.] SHEARING SHED FOR THE FALKLAND ISLANDS.



Notes  
 Timber  
 Constructed in One piece Timber Pole 4" dia. x 20' long  
 New Hinged Doors 2' 8" x 7' 0"  
 with One Glass sash and necessary Wood Work  
 Railings for top of grassy slope in area 1/4 way  
 to be designed & prepared by Building Dept. for concrete  
 for Shearman with Building  
 All other Timberwork in whole Shedding  
 Trusses, Rafters etc. and to be supplied by  
 W. & A. Co. for preparation by Sheet Metal  
 but to suit London Shearman  
 Shedding One Ton extra of Straight Gal. Cor. Sheets  
 1/2" 20 G. 10' 6" can. to be provided  
 All Shedding to be finished in  
 color not exceeding 2 coats.

PLAN SHEARING ARRANGEMENT OF PENS ETC. (for arrangement of Floor Beams see Drawing N° E 588 L)

Scale 3/16" = 1 foot.

WILLIAM BAIN & CO.  
 Structural Engineers etc.  
 110 CANNON ST.  
 LONDON E.C. 4

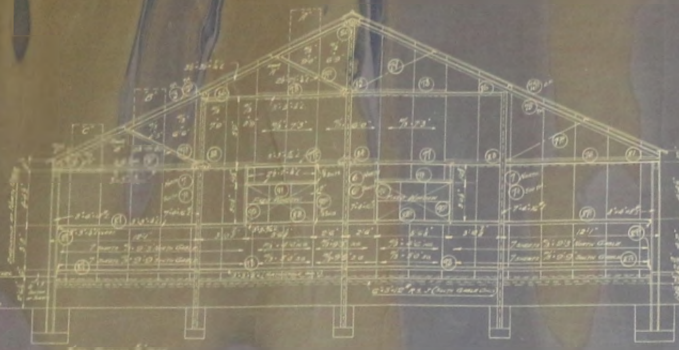
DRAWING N° E 580 L. REVISED 13/4/27.

- Steel Fencing for all PENS 3.6 high from Floor level.
- Steel Sliding Doors for LARGE PENS marked A on plan 5.6 wide.
- Steel Hinged Wicket GATES for SMALL PENS - B on plan 2.9 wide.

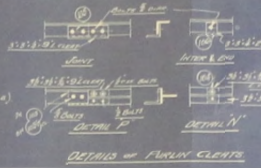
JOB N° 7359  
 W. & A. CO. LTD.  
 SHEARMAN WORKS  
 CHARTERS  
 110 CANNON ST. LONDON

ROBERT BLAKE Esq. SHEARING SHED FOR THE FALKLAND ISLANDS

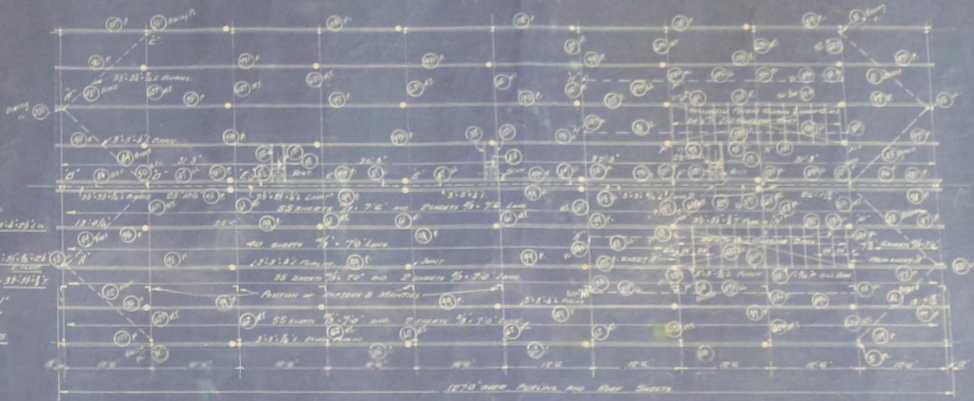
LL = Lining  
 MT = Mastic  
 P = Plaster



GALE FRAMING (WATER & SLOTTED GALVANIZED SHEET)  
 L. BRACING OF GALE FRAMING TO NORTH GABLE  
 TO BE SET AT 10' FROM CORNER TO SOUTH GABLE



DETAILS OF PARCEL CLERKS



PLAN OF PURLINS, ROOF SHEETS & TIE BRACINGS



TYPICAL EDGE BRACING DETAILS



ELEVATION OF WEST SIDE FRONTS



SECTION A-A

SECTION B-B



ELEVATION OF EAST SIDE FRONTS

No.	DESCRIPTION
1	FOUNDATION & SUBSTRUCTURE
2	PLAN OF GALE FRAMING & CLERKS
3	INTER TRUSSES
4	PLAN SHOWING BRACING OF TRUSSES
5	GENERAL ARRANGEMENT
6	GUTTERS & FLASHING
7	DETAILS OF BRACING OF TRUSSES
8	CLADDING DETAILS
9	DETAILS OF TRUSSES
10	DETAILS OF TRUSSES FROM CLADDING TO PLAN

BY ROBERT BLAKE Esq.  
 LOCAL DRAWING OFFICE

DRAWING NO. 7359/5







FLAT WASHER  
 DIMENSIONS:  
 O.D. 1.500  
 I.D. 0.500  
 THICKNESS 0.125



FLAT WASHER  
 DIMENSIONS:  
 O.D. 1.500  
 I.D. 0.500  
 THICKNESS 0.125



FLAT WASHER  
 DIMENSIONS:  
 O.D. 1.500  
 I.D. 0.500  
 THICKNESS 0.125



FLAT WASHER  
 DIMENSIONS:  
 O.D. 1.500  
 I.D. 0.500  
 THICKNESS 0.125



FLAT WASHER  
 DIMENSIONS:  
 O.D. 1.500  
 I.D. 0.500  
 THICKNESS 0.125



FLAT WASHER  
 DIMENSIONS:  
 O.D. 1.500  
 I.D. 0.500  
 THICKNESS 0.125



FLAT WASHER  
 DIMENSIONS:  
 O.D. 1.500  
 I.D. 0.500  
 THICKNESS 0.125



FLAT WASHER  
 DIMENSIONS:  
 O.D. 1.500  
 I.D. 0.500  
 THICKNESS 0.125



FLAT WASHER  
 DIMENSIONS:  
 O.D. 1.500  
 I.D. 0.500  
 THICKNESS 0.125



FLAT WASHER  
 DIMENSIONS:  
 O.D. 1.500  
 I.D. 0.500  
 THICKNESS 0.125



FLAT WASHER  
 DIMENSIONS:  
 O.D. 1.500  
 I.D. 0.500  
 THICKNESS 0.125



FLAT WASHER  
 DIMENSIONS:  
 O.D. 1.500  
 I.D. 0.500  
 THICKNESS 0.125

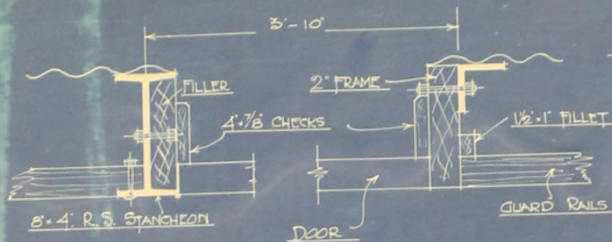
A - FLAT WASHER  
 B - SPR. WASHER



SHEEP SHEARING SHED.  
FOR ROBERT BLAKE ESQ.  
FALKLAND ISLANDS.

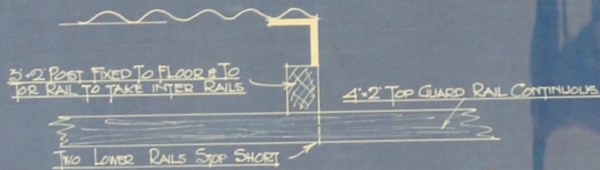


7'-0" x 5'-6" x 1 7/8" FRAMED & LINED DOOR  
ONE THIS, ONE OTHER HAND.

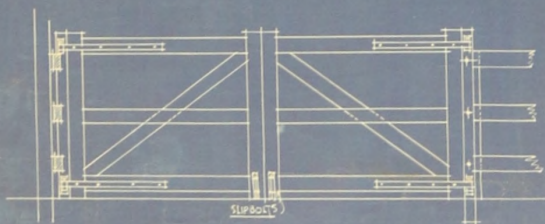


DETAIL PLAN OF DOORS.

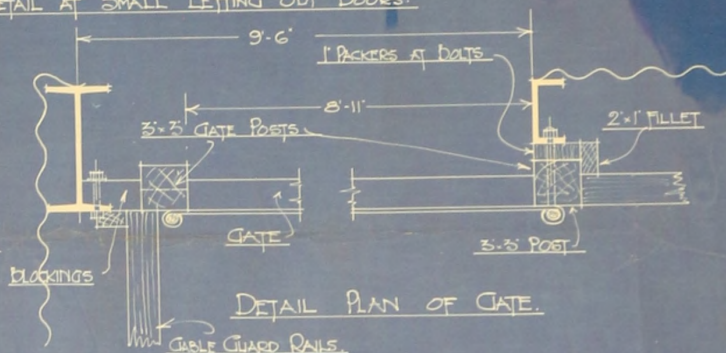
DETAILS OF TIMBER WORK.



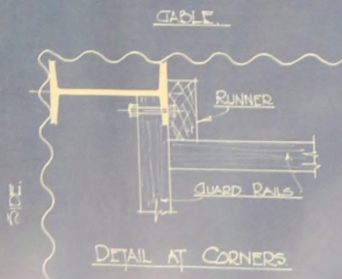
DETAIL AT SMALL LETTING OUT DOORS.



ONE SPARR'D GATE THIS 8'-11" x 3'-6" HIGH.



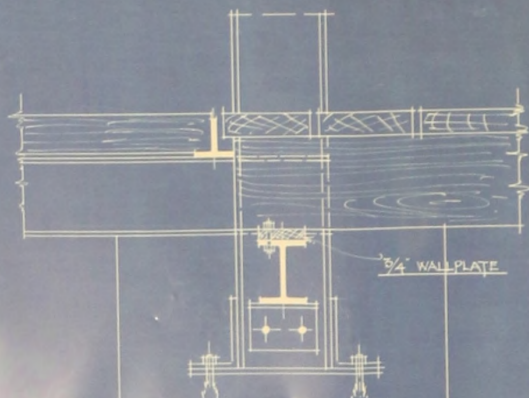
DETAIL PLAN OF GATE.



DETAIL AT CORNERS



DETAIL AT SLIDING DOORS



AMENDED DETAIL SECTION 'K K' FOUNDATION PLAN.

DRAWING NO. B/7359/9

DRAWING NO. B/7359/9

ROBERT BLAKE Esq.

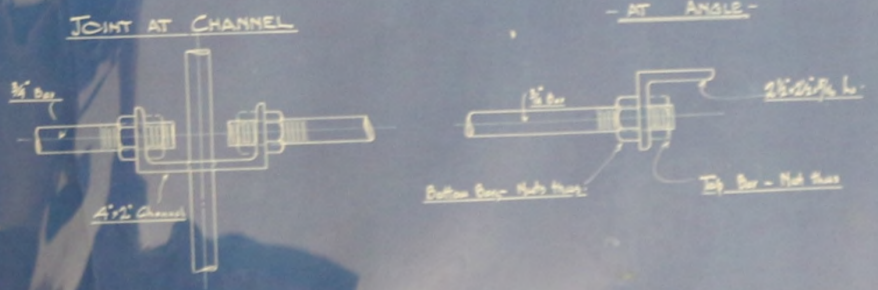
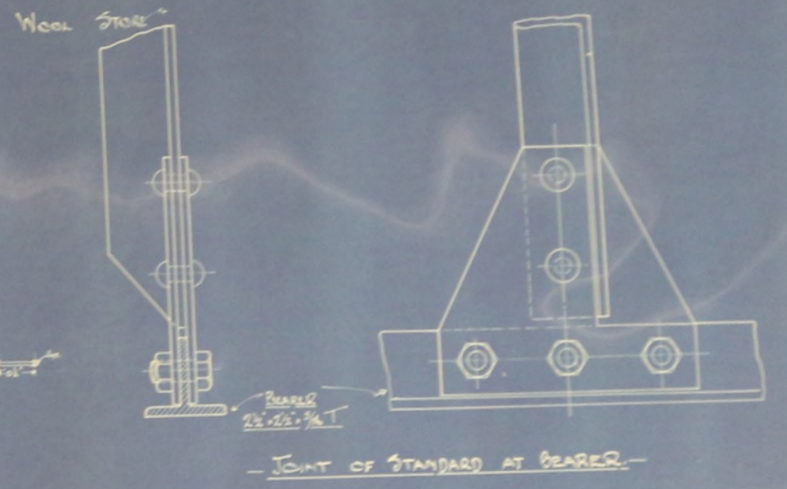
SHEARING SHED FOR THE FALKLAND ISLANDS.  
 DETAILS OF TIMBER FLOOR GRATING FOR PENS.



R/7359/10

WILLIAM DAIN & CO.  
 STRUCTURAL ENGINEERS  
 110 CANNON STREET  
 LONDON, E.C.4.

Drawing No. L. 500/1  
 28/4/27



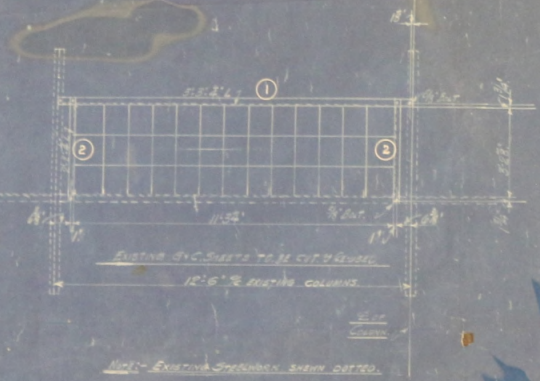
- ERECTION PLAN OF PENS -

- SHEARING SHED FOR FALKLAND ISLANDS -

- DRG NO 253 -

Scale 4" x 6" = 1'-0"

ADDITIONAL WINDOW & FRAMING TO JOINT #17359  
ROCKET BLAKE EQ.



NOTE - EXISTING SPANBOLK SHOWN DOTTED.

EXISTING DIMENSIONAL CELLS FOR  
 2x4 SHEETS @ 12" SPACING  
 IN 12x12 SHEET FRAMING

FRAMING TO RECEIVE ONE CONT. GUT DRAIN BEHIND SHEET



57' SHUT - 20' SHUT ROOFING  
 (1) 2x4 @ 16" O.C. (ATTN)  
 (2) 2x6 @ 24" O.C. (CELS)



EXISTING 2x4 SHUT ROOFING  
 (1) 2x4 @ 16" O.C. (ATTN)



EXISTING 2x4 SHUT ROOFING @ 16" O.C.



SECTION THROUGH SHED

JOINT #17359  
 LAMINAR ROOFING - DISCONTINUED  
 JOINT #17359

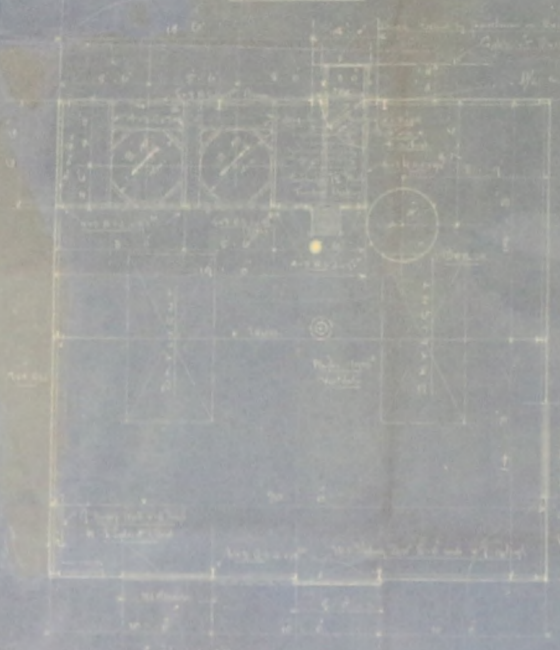






ROBERT BLAKE ESQ

BOILER SHED



PROPOSED  
STEEL FRAMED BUILDING

FOR

TRY WORKS.

HILL COVE - FALKLAND ISLANDS

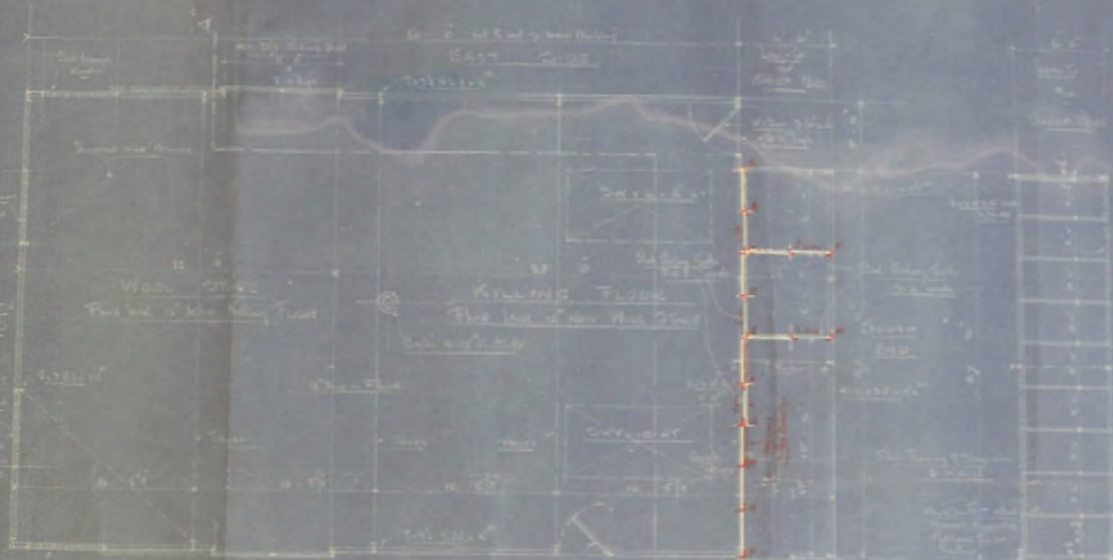
DRAWING N° E 612 L

1 Dec 1927

William Drenth  
 Structural Engineer  
 No 10, Cannon St London

PROPOSED STEEL FRAMED BUILDING  
FOR  
KILLING SHED & WOOL STORE  
HILL COVE, ALBANY ISLANDS

Killing Shed master plan



WILLIAM B. BROWN  
ARCHT. & ENGR.  
HILL COVE, ALBANY ISLANDS

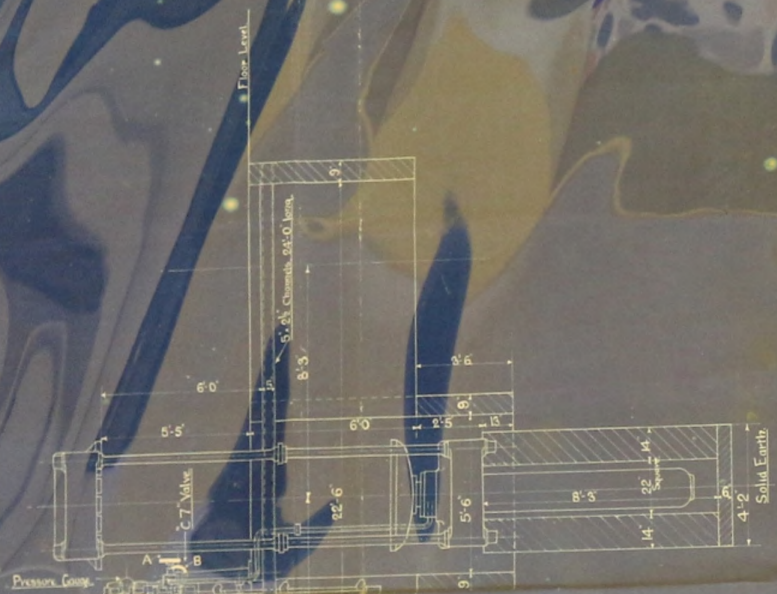
DESIGNED BY  
WILLIAM B. BROWN  
ARCHT. & ENGR.  
HILL COVE, ALBANY ISLANDS

NO. 1000 -

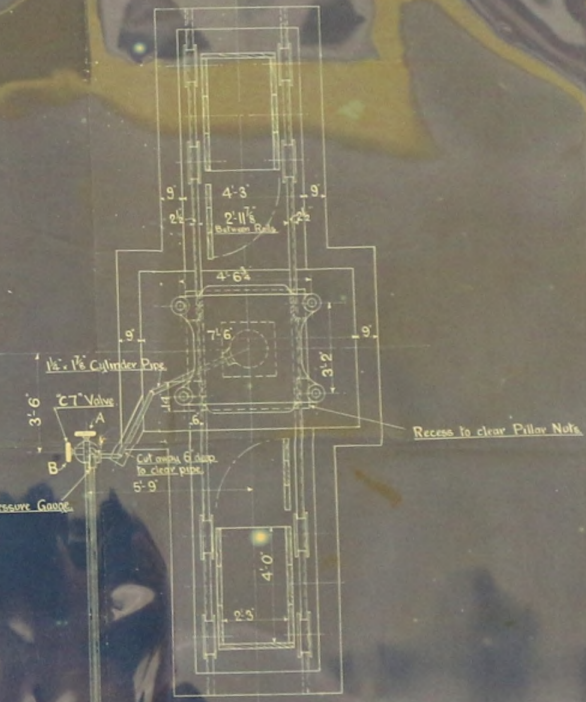


JOHN SHAW & SONS  
(SALFORD) LTD  
ENGINEERS.  
SALFORD.

When the pressure in the  
Cylinder is 1 Ton Box must  
be raised & removed when  
the Final Pressure can be set on Balls.



Note:  
Before starting Pumps see that either Spindle "A" or "B"  
is Valve is open  
To operate Valve. Shut both Spindles "A" & "B" to send  
Press Ram up.  
Open "B" to big pipe (i.e. pump through)  
leaving Press Ram up.  
Open "A" to lower Ram leaving "B" open.



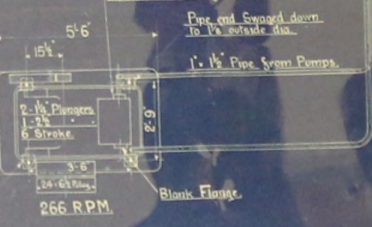
Pumps may be placed in any  
convenient position. Piping may be  
taken the most convenient way as it is  
only shown diagrammatically on this drawing.

This connection may be taken off  
at either side of Pumps.

Pipe end squared down  
to 1 1/2 outside dia.

1 1/2" Pipe from Pumps.

- 1 - 2 1/2" Plunger knobs of 750 lbs
- 1 - 1 1/2" " " " 1 Ton
- 1 - 1 1/2" " " " 2 1/2 Ton



Pockets 5/8" dia 12" deep  
for 1 1/2" Tower Balls.

Return to Tank  
by V.I. Pipe.

No OFT	Name	Job No	Remarks	Date
			2 Boxes	16-6-24

4  
899

FOUNDATION FOR 10' WOOL PRESS & 3-SET HORIZONTAL PUMPS. COTTON BOX 4'0" x 2'3" x 10'0" INSIDE.

Scale 1/2" = One Foot

JUNE 23<sup>RD</sup> 1924.



JOHN SHAW & SONS  
 Accrington L7  
 ENGINEERS  
 SALFORD

No.	Description	Quantity
1	Cast Iron	1.00
2	Cast Iron	1.00
3	Cast Iron	1.00
4	Cast Iron	1.00
5	Cast Iron	1.00
6	Cast Iron	1.00
7	Cast Iron	1.00
8	Cast Iron	1.00
9	Cast Iron	1.00
10	Cast Iron	1.00
11	Cast Iron	1.00
12	Cast Iron	1.00
13	Cast Iron	1.00
14	Cast Iron	1.00
15	Cast Iron	1.00
16	Cast Iron	1.00
17	Cast Iron	1.00
18	Cast Iron	1.00
19	Cast Iron	1.00
20	Cast Iron	1.00
21	Cast Iron	1.00
22	Cast Iron	1.00
23	Cast Iron	1.00
24	Cast Iron	1.00
25	Cast Iron	1.00
26	Cast Iron	1.00
27	Cast Iron	1.00
28	Cast Iron	1.00
29	Cast Iron	1.00
30	Cast Iron	1.00
31	Cast Iron	1.00
32	Cast Iron	1.00
33	Cast Iron	1.00
34	Cast Iron	1.00
35	Cast Iron	1.00
36	Cast Iron	1.00
37	Cast Iron	1.00
38	Cast Iron	1.00
39	Cast Iron	1.00
40	Cast Iron	1.00
41	Cast Iron	1.00
42	Cast Iron	1.00
43	Cast Iron	1.00
44	Cast Iron	1.00
45	Cast Iron	1.00
46	Cast Iron	1.00
47	Cast Iron	1.00
48	Cast Iron	1.00
49	Cast Iron	1.00
50	Cast Iron	1.00
51	Cast Iron	1.00
52	Cast Iron	1.00
53	Cast Iron	1.00
54	Cast Iron	1.00
55	Cast Iron	1.00
56	Cast Iron	1.00
57	Cast Iron	1.00
58	Cast Iron	1.00
59	Cast Iron	1.00
60	Cast Iron	1.00
61	Cast Iron	1.00
62	Cast Iron	1.00
63	Cast Iron	1.00
64	Cast Iron	1.00
65	Cast Iron	1.00
66	Cast Iron	1.00
67	Cast Iron	1.00
68	Cast Iron	1.00
69	Cast Iron	1.00
70	Cast Iron	1.00
71	Cast Iron	1.00
72	Cast Iron	1.00
73	Cast Iron	1.00
74	Cast Iron	1.00
75	Cast Iron	1.00
76	Cast Iron	1.00
77	Cast Iron	1.00
78	Cast Iron	1.00
79	Cast Iron	1.00
80	Cast Iron	1.00
81	Cast Iron	1.00
82	Cast Iron	1.00
83	Cast Iron	1.00
84	Cast Iron	1.00
85	Cast Iron	1.00
86	Cast Iron	1.00
87	Cast Iron	1.00
88	Cast Iron	1.00
89	Cast Iron	1.00
90	Cast Iron	1.00
91	Cast Iron	1.00
92	Cast Iron	1.00
93	Cast Iron	1.00
94	Cast Iron	1.00
95	Cast Iron	1.00
96	Cast Iron	1.00
97	Cast Iron	1.00
98	Cast Iron	1.00
99	Cast Iron	1.00
100	Cast Iron	1.00



In general valve  
 To see run of shaft spindle  
 To see run of shaft spindle  
 To see run of shaft spindle  
 To see run of shaft spindle  
 To see run of shaft spindle



C7 VALVE

Scale 1/2" = 1"

JOHN SHAW & SONS  
SALFORD L.T.  
ENGINEERS  
SALFORD



No	Description	Qty
38	Shaft	1
39	Gear	2
40	Pinion	2
41	Seal	2

No	Description	Qty	No	Description	Qty	No	Description	Qty
1	Shaft	1	17	Pinion	2	34	Seal	2
2	Bearing	2	18	Gear	2	35	Seal	2
3	Pinion	2	19	Seal	2	36	Seal	2
4	Gear	2	20	Seal	2	37	Seal	2
5	Pinion	2	21	Seal	2	38	Seal	2
6	Gear	2	22	Seal	2	39	Seal	2
7	Pinion	2	23	Seal	2	40	Seal	2
8	Gear	2	24	Seal	2	41	Seal	2
9	Pinion	2	25	Seal	2	42	Seal	2
10	Gear	2	26	Seal	2	43	Seal	2
11	Pinion	2	27	Seal	2	44	Seal	2
12	Gear	2	28	Seal	2	45	Seal	2
13	Pinion	2	29	Seal	2	46	Seal	2
14	Gear	2	30	Seal	2	47	Seal	2
15	Pinion	2	31	Seal	2	48	Seal	2
16	Gear	2	32	Seal	2	49	Seal	2
17	Pinion	2	33	Seal	2	50	Seal	2
18	Gear	2	34	Seal	2	51	Seal	2
19	Pinion	2	35	Seal	2	52	Seal	2
20	Gear	2	36	Seal	2	53	Seal	2
21	Pinion	2	37	Seal	2	54	Seal	2
22	Gear	2	38	Seal	2	55	Seal	2
23	Pinion	2	39	Seal	2	56	Seal	2
24	Gear	2	40	Seal	2	57	Seal	2
25	Pinion	2	41	Seal	2	58	Seal	2
26	Gear	2	42	Seal	2	59	Seal	2
27	Pinion	2	43	Seal	2	60	Seal	2
28	Gear	2	44	Seal	2	61	Seal	2
29	Pinion	2	45	Seal	2	62	Seal	2
30	Gear	2	46	Seal	2	63	Seal	2
31	Pinion	2	47	Seal	2	64	Seal	2
32	Gear	2	48	Seal	2	65	Seal	2
33	Pinion	2	49	Seal	2	66	Seal	2
34	Gear	2	50	Seal	2	67	Seal	2
35	Pinion	2	51	Seal	2	68	Seal	2
36	Gear	2	52	Seal	2	69	Seal	2
37	Pinion	2	53	Seal	2	70	Seal	2
38	Gear	2	54	Seal	2	71	Seal	2
39	Pinion	2	55	Seal	2	72	Seal	2
40	Gear	2	56	Seal	2	73	Seal	2
41	Pinion	2	57	Seal	2	74	Seal	2
42	Gear	2	58	Seal	2	75	Seal	2
43	Pinion	2	59	Seal	2	76	Seal	2
44	Gear	2	60	Seal	2	77	Seal	2
45	Pinion	2	61	Seal	2	78	Seal	2
46	Gear	2	62	Seal	2	79	Seal	2
47	Pinion	2	63	Seal	2	80	Seal	2
48	Gear	2	64	Seal	2	81	Seal	2
49	Pinion	2	65	Seal	2	82	Seal	2
50	Gear	2	66	Seal	2	83	Seal	2
51	Pinion	2	67	Seal	2	84	Seal	2
52	Gear	2	68	Seal	2	85	Seal	2
53	Pinion	2	69	Seal	2	86	Seal	2
54	Gear	2	70	Seal	2	87	Seal	2
55	Pinion	2	71	Seal	2	88	Seal	2
56	Gear	2	72	Seal	2	89	Seal	2
57	Pinion	2	73	Seal	2	90	Seal	2
58	Gear	2	74	Seal	2	91	Seal	2
59	Pinion	2	75	Seal	2	92	Seal	2
60	Gear	2	76	Seal	2	93	Seal	2
61	Pinion	2	77	Seal	2	94	Seal	2
62	Gear	2	78	Seal	2	95	Seal	2
63	Pinion	2	79	Seal	2	96	Seal	2
64	Gear	2	80	Seal	2	97	Seal	2
65	Pinion	2	81	Seal	2	98	Seal	2
66	Gear	2	82	Seal	2	99	Seal	2
67	Pinion	2	83	Seal	2	100	Seal	2
68	Gear	2	84	Seal	2			
69	Pinion	2	85	Seal	2			
70	Gear	2	86	Seal	2			
71	Pinion	2	87	Seal	2			
72	Gear	2	88	Seal	2			
73	Pinion	2	89	Seal	2			
74	Gear	2	90	Seal	2			
75	Pinion	2	91	Seal	2			
76	Gear	2	92	Seal	2			
77	Pinion	2	93	Seal	2			
78	Gear	2	94	Seal	2			
79	Pinion	2	95	Seal	2			
80	Gear	2	96	Seal	2			
81	Pinion	2	97	Seal	2			
82	Gear	2	98	Seal	2			
83	Pinion	2	99	Seal	2			
84	Gear	2	100	Seal	2			

3 SET HORIZONTAL PUMPS



HILL COVE HOUSE - DEC. 1955 - SCALE 1 in = 3 ft

