

FARMING - PORT LOUIS - PLAN OF THE SETTLEMENT... - APR 1842 / A SKETCH TO... - APR 1843

MC3-25-LO-0001



MP 8 COLO/FALKLAND ISLANDS









PLAN  
OF  
ANSON FALKLAND ISLANDS.

Surveyed & Plotted by  
M R ROBINSON  
Surveyor 1843



P O R T L O U I S



LOT 5.

Survey No. 88

1925

1925

1925

1925

1925

1925

1925

1925

1925

1925

1925

1925

1925

1925

1925

1925

1925

1925

1925

1925

1925

1925

1925

1925

1925

1925

1925

1925

1925

1925

1925

1925

1925

1925

1925

1925

1925

1925

1925

1925

North East Corner

PORT LOUIS HARBOUR

SALVAGER WORKS

Boundary Lines



Station	Angle	Distance
A	115° 15'	120.0
B	105° 30'	100.0
C	120° 00'	150.0
D	110° 15'	130.0
E	100° 00'	110.0
F	115° 30'	140.0
G	105° 45'	125.0
H	120° 15'	160.0
I	110° 30'	145.0
J	100° 45'	135.0
K	115° 00'	155.0
L	105° 15'	140.0
M	120° 30'	170.0
Total		1777.0

Station	Angle	Distance
A	115° 15'	120.0
B	105° 30'	100.0
C	120° 00'	150.0
D	110° 15'	130.0
E	100° 00'	110.0
F	115° 30'	140.0
G	105° 45'	125.0
H	120° 15'	160.0
I	110° 30'	145.0
J	100° 45'	135.0
K	115° 00'	155.0
L	105° 15'	140.0
M	120° 30'	170.0
Total		1777.0

Scale 1" = 200 Feet

Surveyed and  
 Witnessed  
 27 May 1925



LOT 5.

Section 44



Area	Area
A	177.0
B	172.0
C	175.0
D	171.5
E	160.0
F	177.0
G	170.0
H	171.0
I	170.0
J	170.0
K	170.0
L	170.0
M	170.0
N	170.0
O	170.0
P	170.0
Q	170.0
R	170.0
S	170.0
T	170.0
U	170.0
V	170.0
W	170.0
X	170.0
Y	170.0
Z	170.0
Total	1774.0

Area	Area
1	177.0
2	172.0
3	175.0
4	171.5
5	160.0
6	177.0
7	170.0
8	171.0
9	170.0
10	170.0
11	170.0
12	170.0
13	170.0
14	170.0
15	170.0
16	170.0
17	170.0
18	170.0
19	170.0
20	170.0
21	170.0
22	170.0
23	170.0
24	170.0
25	170.0
26	170.0
27	170.0
28	170.0
29	170.0
30	170.0
Total	1774.0

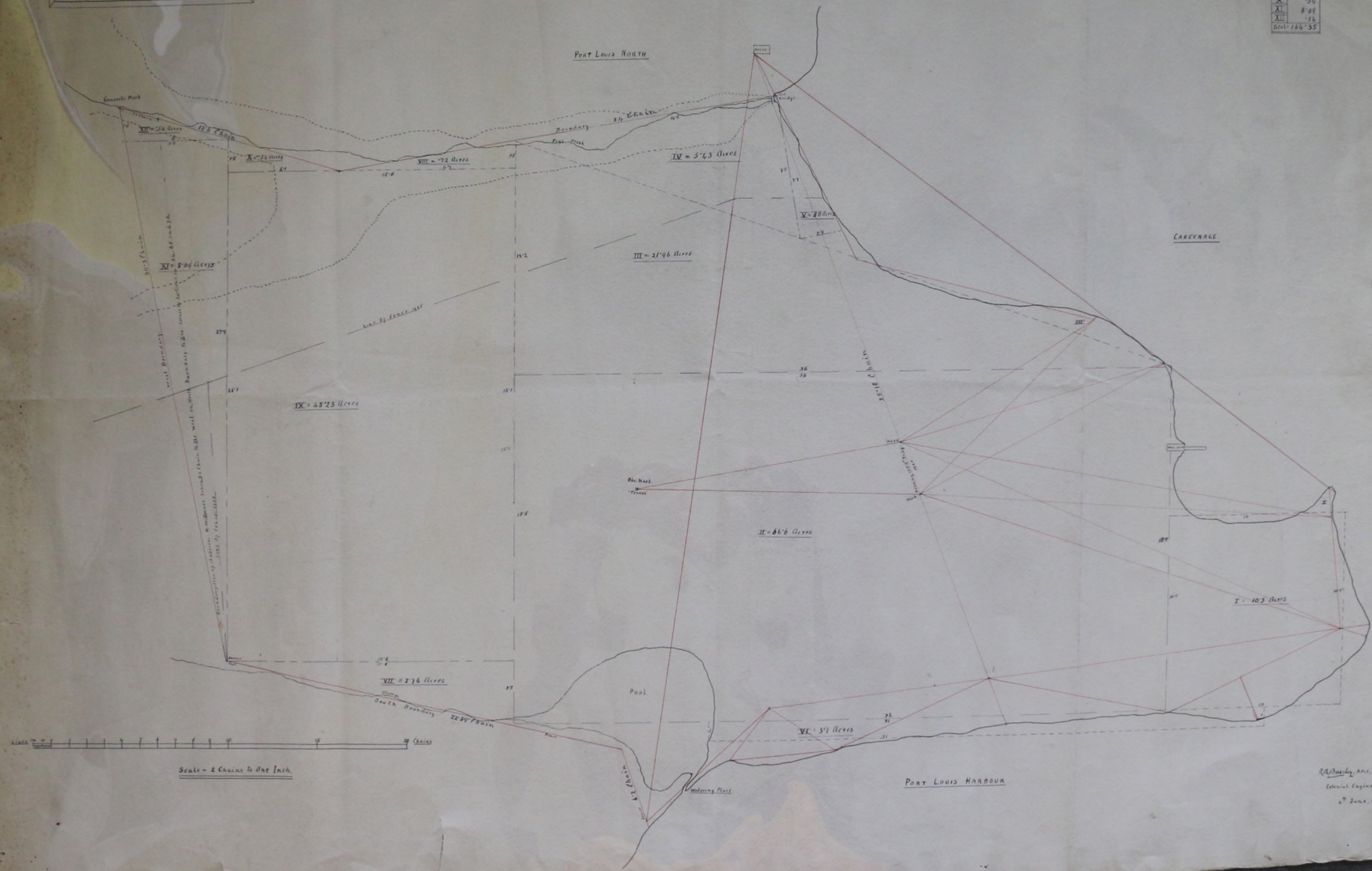
Wm. L. ...  
Civil Engineer  
20th May 1925

TABLE FROM DRAWING SHEET  
June 10 1925



C.G. 44.  
180 ACRES

Subd.	Acres
I	10.20
II	66.60
III	21.96
IV	5.73
V	2.80
VI	3.51
VII	2.76
VIII	.72
IX	43.23
X	.56
XI	8.04
XII	.56
Total	186.35

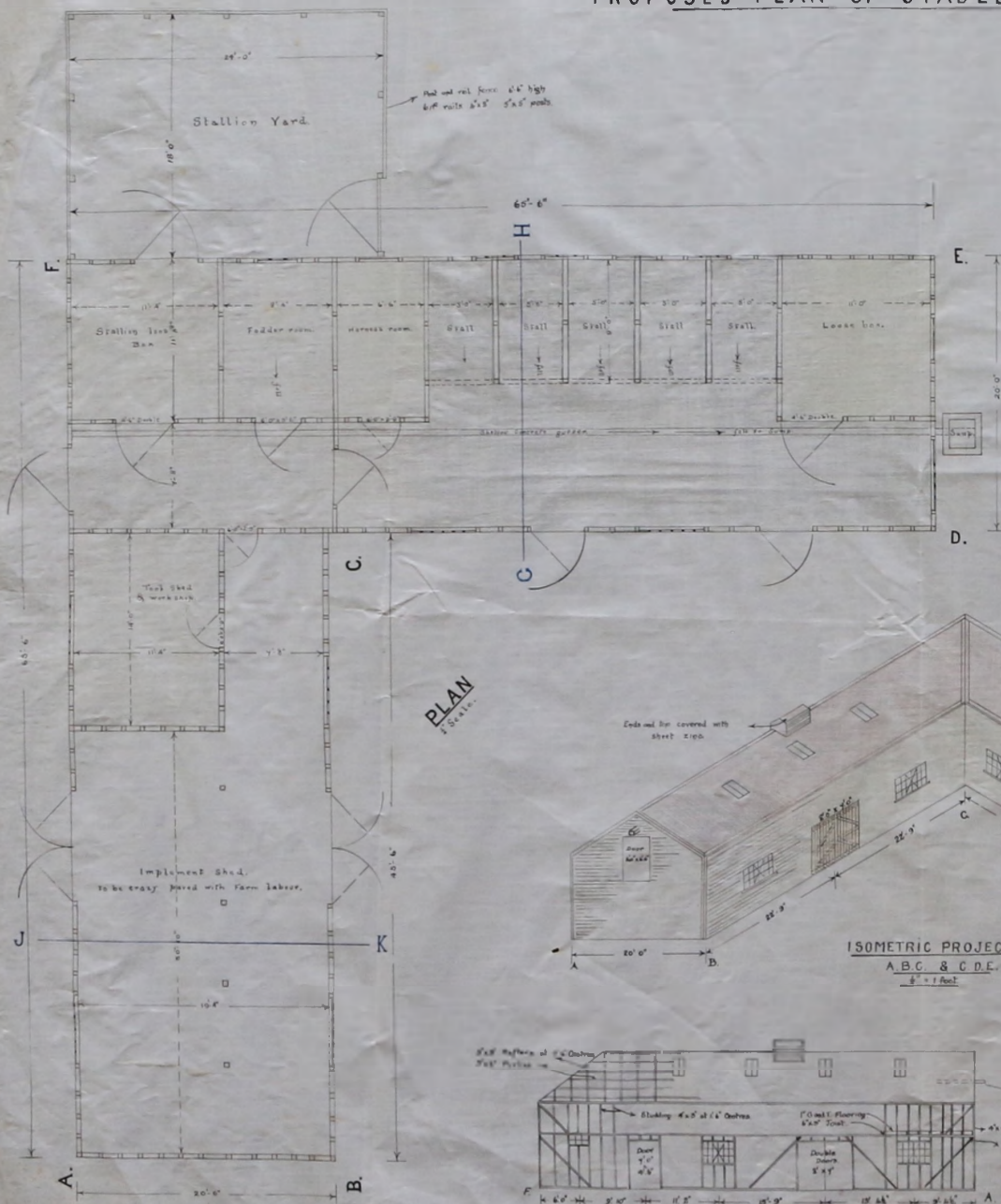


R. B. ...  
Civil Engineer  
4th June 1925

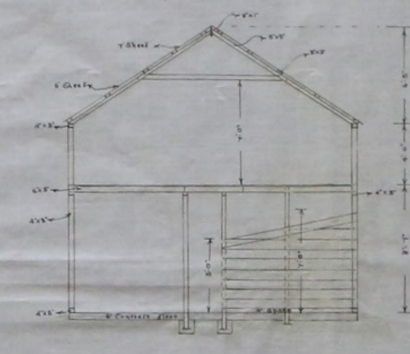


# ANSON FARM

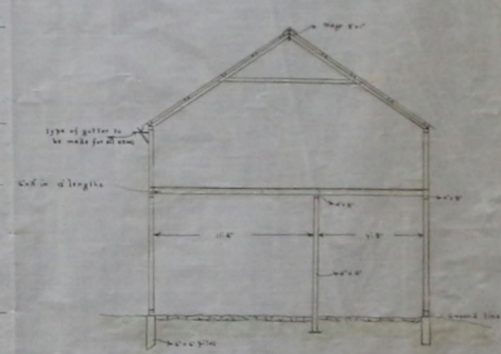
## PROPOSED PLAN OF STABLES AND IMPLEMENT SHED.



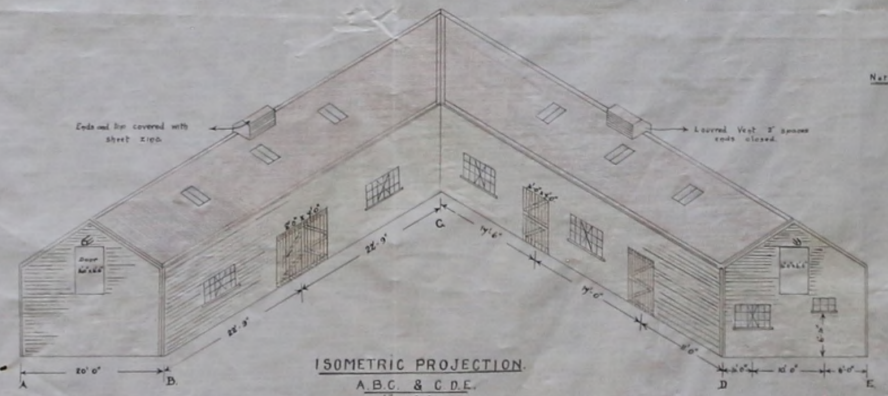
PLAN  
1/8" = 1 foot



SECTION G.H.  
1/8" = 1 foot

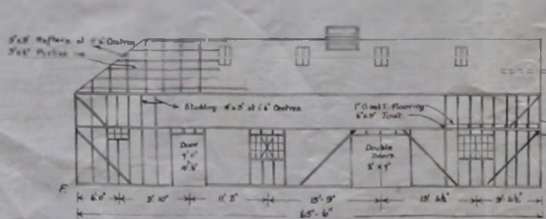


SECTION J.K.  
1/8" = 1 foot

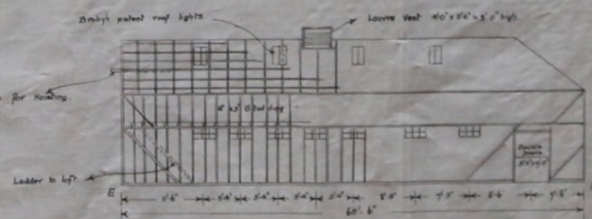


ISOMETRIC PROJECTION  
A.B.C. & C.D.E.  
1/8" = 1 foot

Note: Corbels, steel angles & frames are 4"x4"x1/2"  
& 5"x5"x1/2" steel size between framing



ELEVATION A.F.  
1/8" = 1 foot

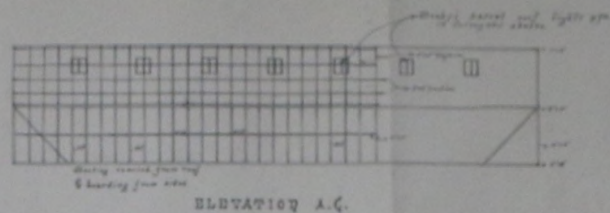
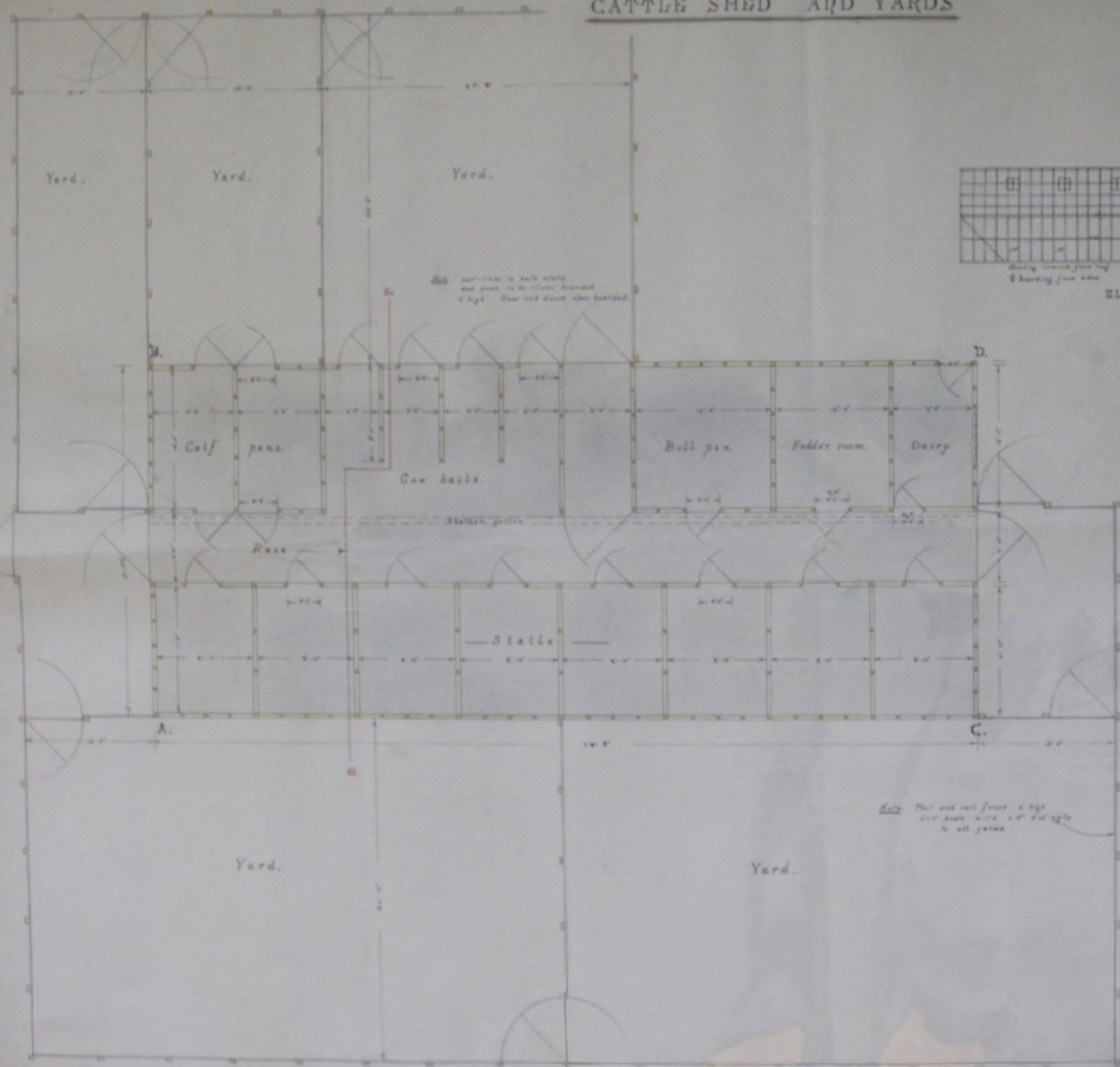


ELEVATION F.E.  
1/8" = 1 foot

*G. R. ...*  
25th June 1926



### ANSON FARM CATTLE SHED AND YARDS



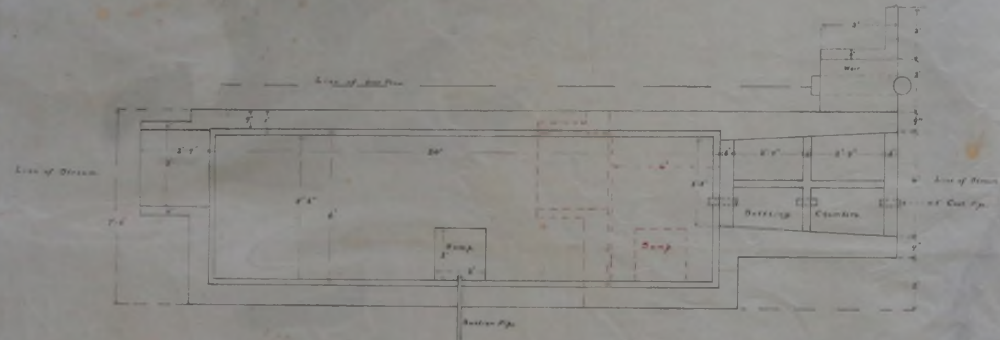
SCALE OF SECTIONS AND ELEVATIONS  
1" = 10' - 0"

*E. R. ...*

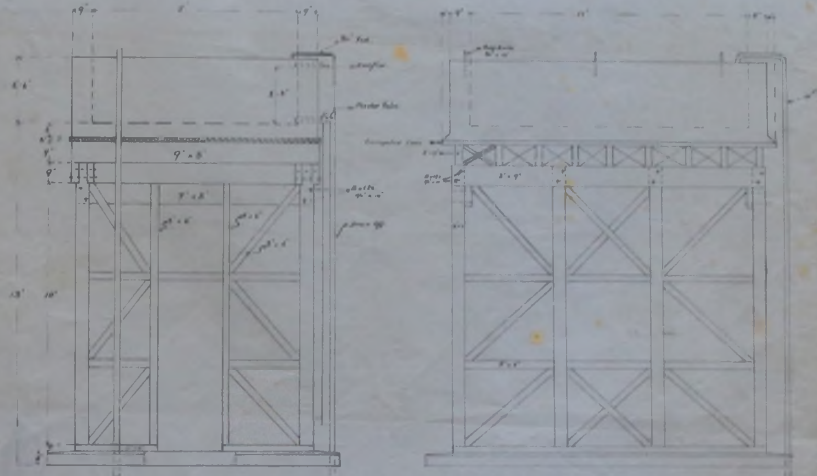


M. M. 10/26
Drawing No. 11  
**WATER SUPPLY. ANSON.**

- Concrete Reservoir 615 Gallons
- Concrete Reservoir 3234 Gallons
- Concrete Pressure Tank 1200 Gallons
- Dairy 12' x 11'5" x 10'



PLAN



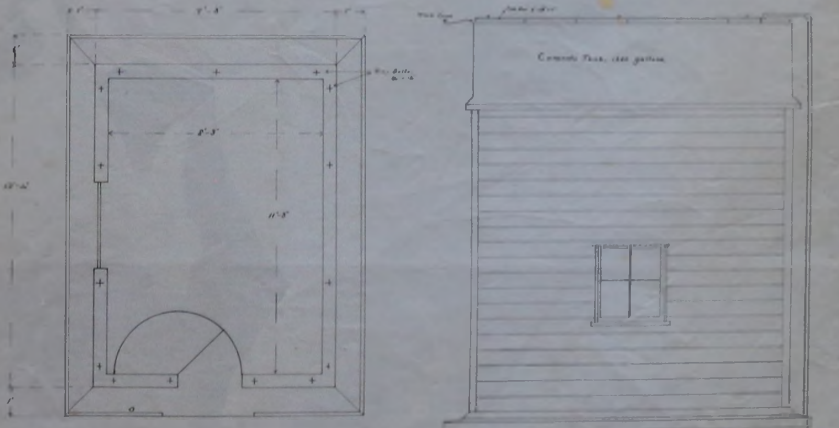
END ELEVATION

SIDE ELEVATION (PILING)

LEVEL	FINISH
Ground	0
Sub-base	1.00
Water Reservoir	1.00
Basement Floor	2.00
Basement	2.00
Max. Storage	2.2
Concrete floor	3.00
Basement	3.00
Clay	3.00
Basement floor	3.00
Basement	3.00

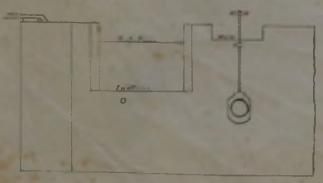


ELEVATION



PLAN

SIDE ELEVATION

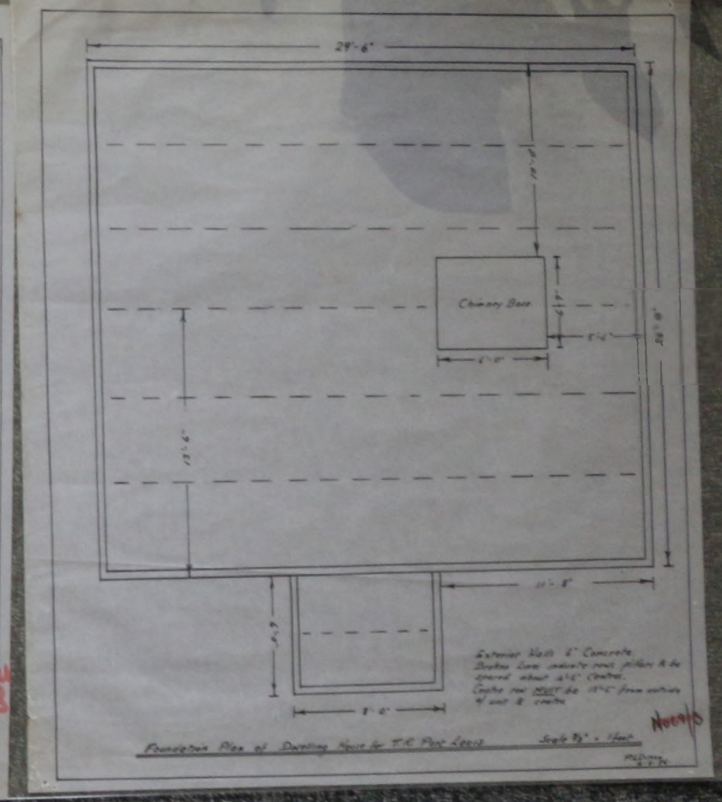
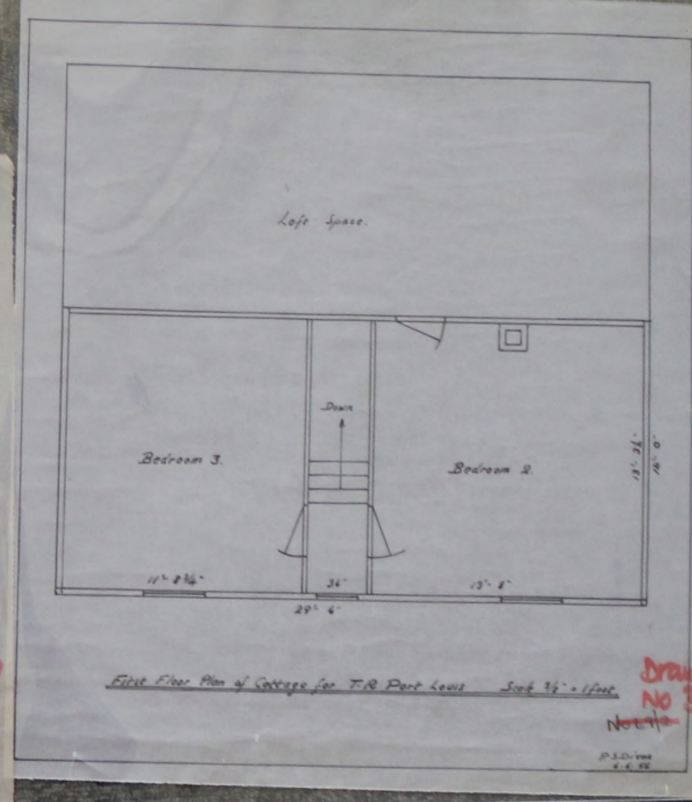
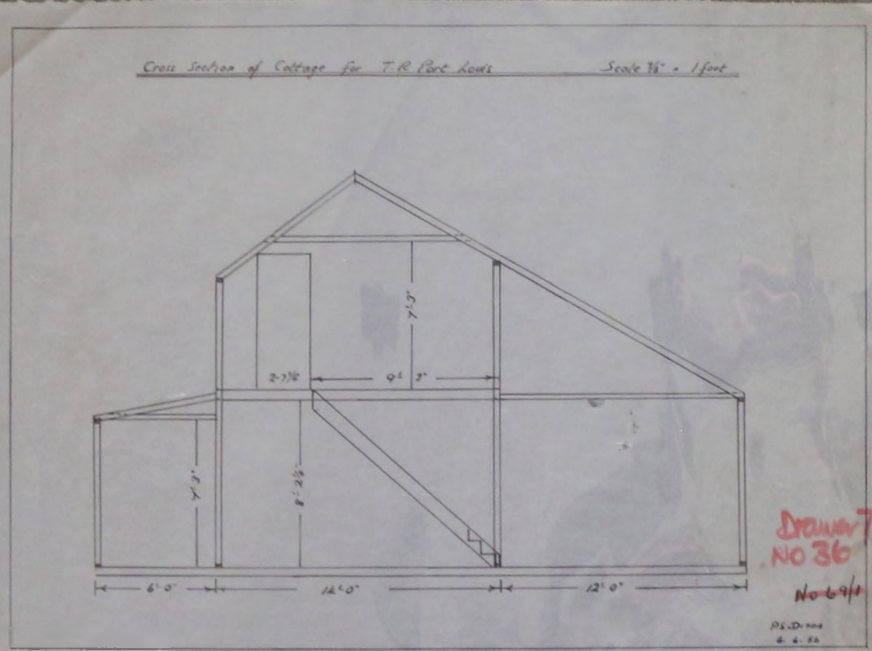
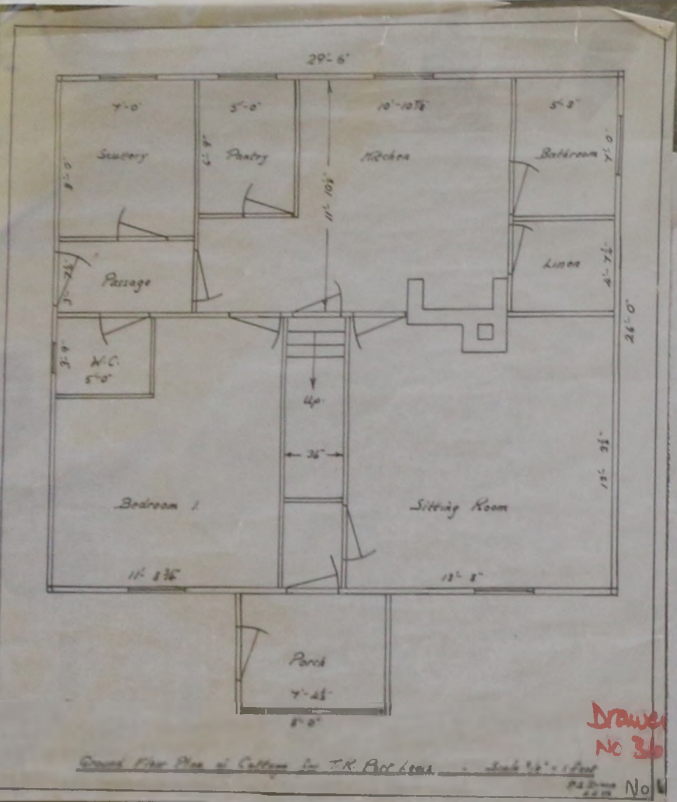


Scale 1/2"

Vertical Scale  
 1" = 10'

Approved for construction  
 by the  
 U.S. Army





Drawn No 36

Drawn No 36  
 No 641

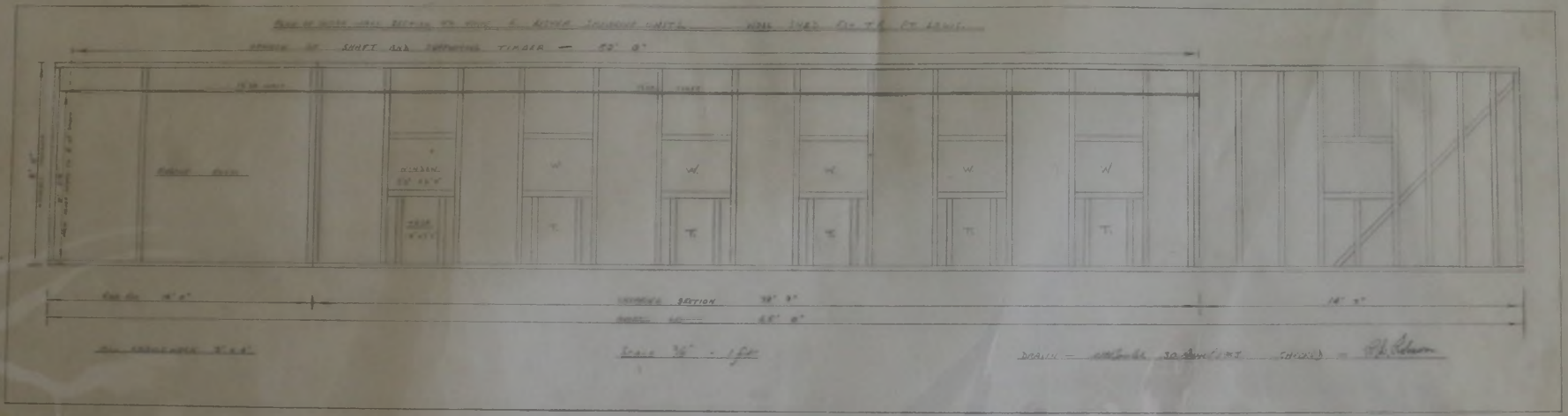
Drawn No 36

Drawn No 36



FIC-FARMING-PORT LOUIS - WOOLSHED EST TR ... - 30 APR 1963

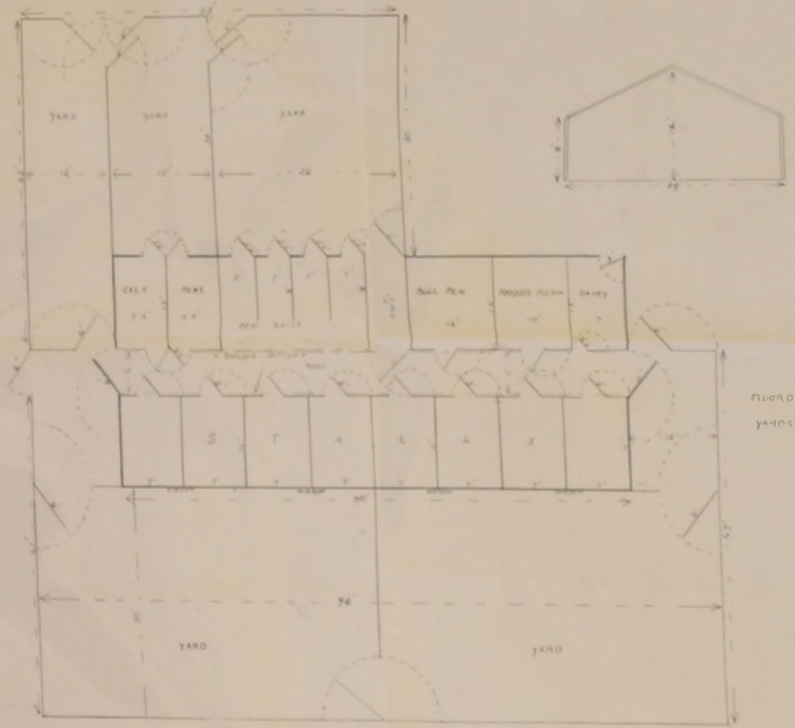
MC3-25-LO-0011



235



PLAN OF CATTLE SHED AND YARDS PROPOSED FOR ANSON



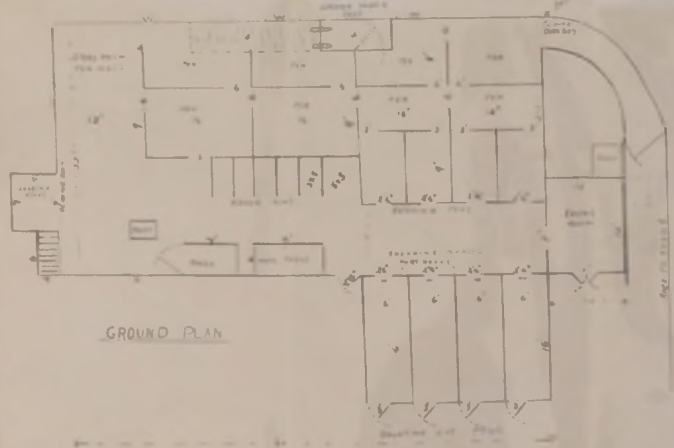
FLOOR OF BUILDING CONCRETE  
YARDS STONE PAVING

SOUTH ELEVATION



NORTH ELEVATION

ROUGH PLAN OF WOOLSHED PROPOSED FOR ANSON

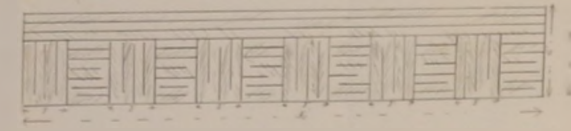
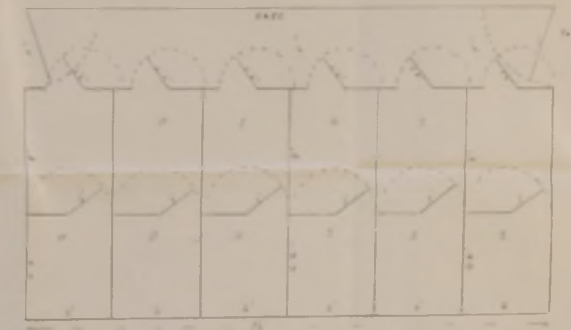


GROUND PLAN

NOTE: PROJECT WITH CAREY WALL OF 2" THICKNESS TO BE  
4" AND 8" HIGH.  
THICKNESS OF FLOOR AND STAIRS 4" OR 6" AS REQUIRED  
IF NECESSARY

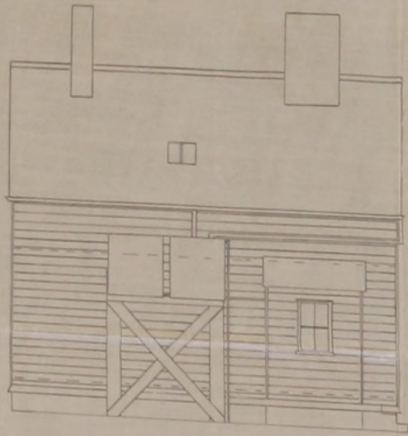
*Approved by [unclear]  
to be put in [unclear]  
[unclear] [unclear]  
[unclear]*

PLAN OF PIG SHEDS AND PENS PROPOSED FOR ANSON





*Drawing No. 10*  
**FARM HAND**  
*Small*



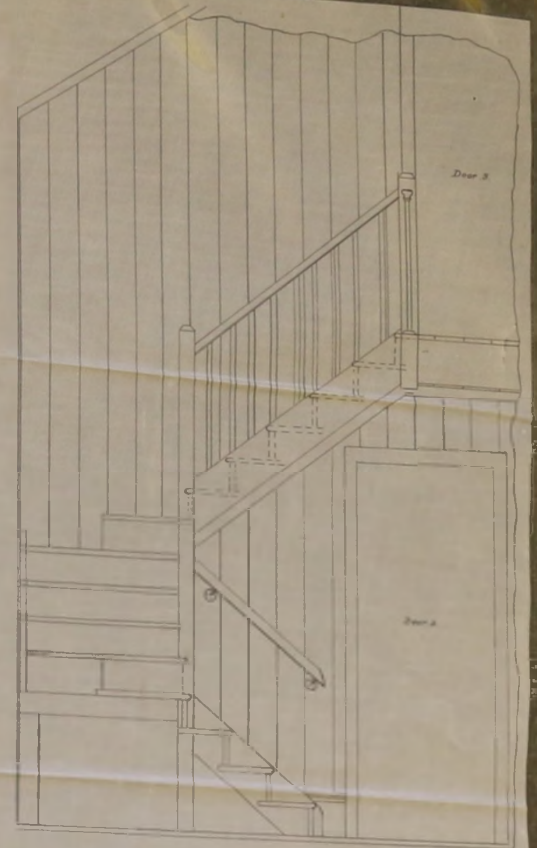
BACK



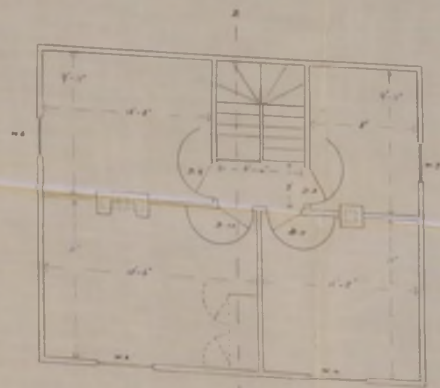
SIDE



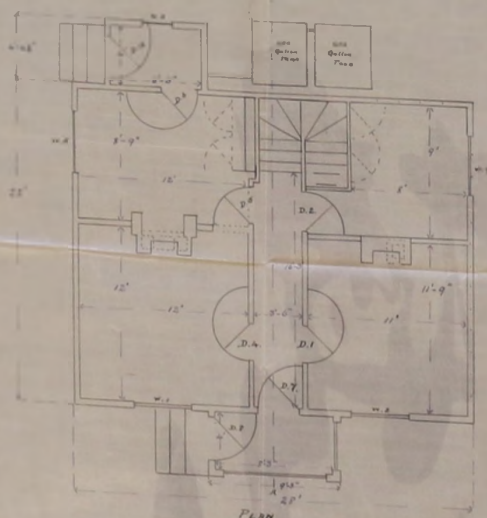
FRONT



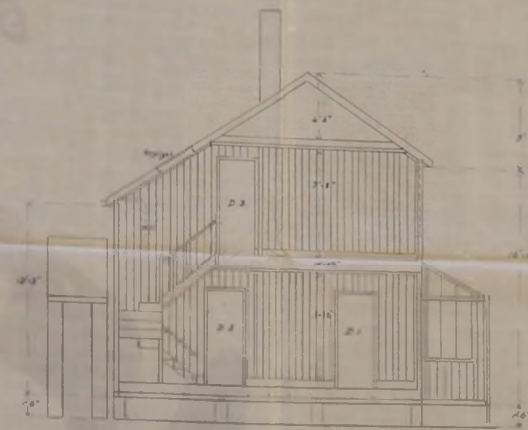
DETAIL OF ENTRANCE *Scale 1/2"*



First Floor



PLAN



SECTION THROUGH A-B

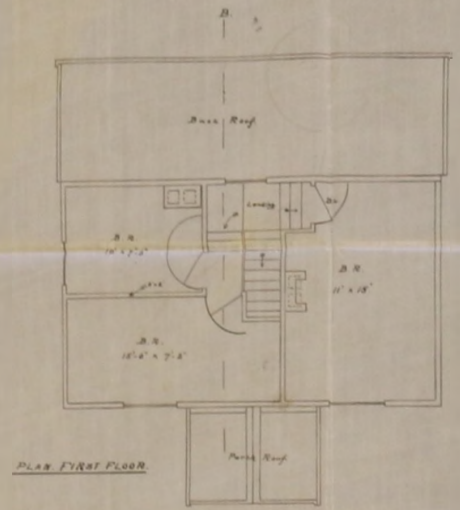
*Architect*  
*Small*

*Small*

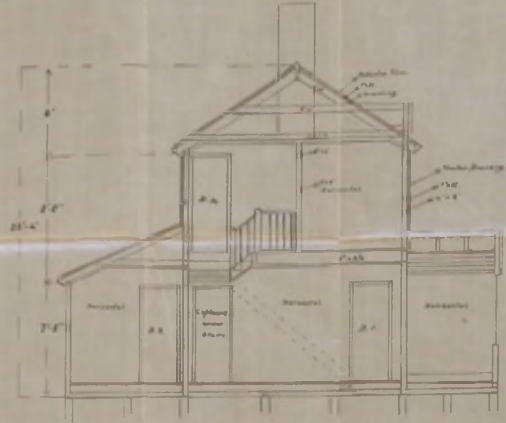
*Small*



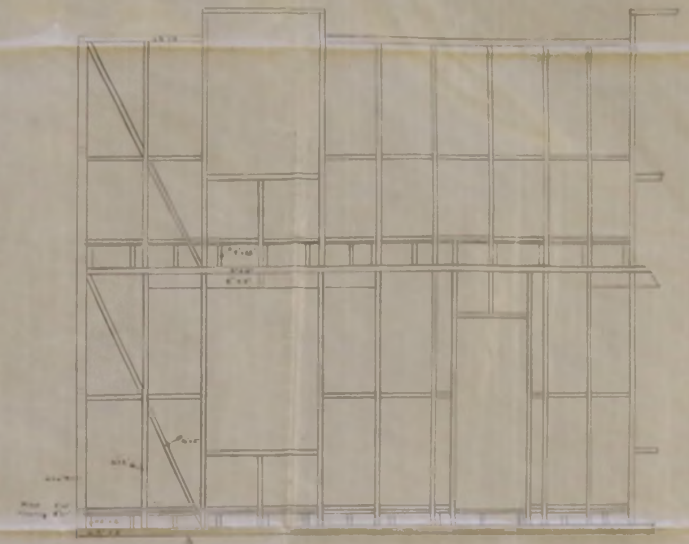
COTTAGE. No I.  
ANSON.



PLAN FIRST FLOOR

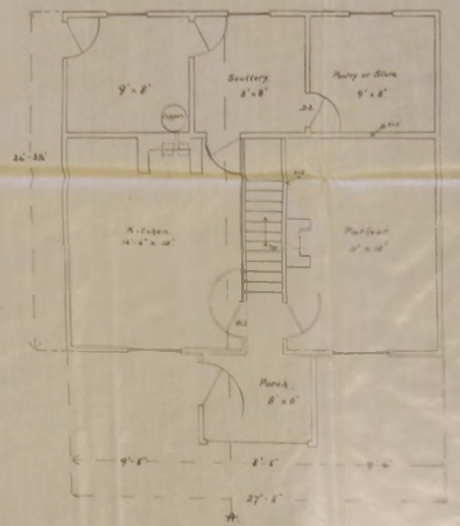


Section through A-A



Front Elevation (Full)

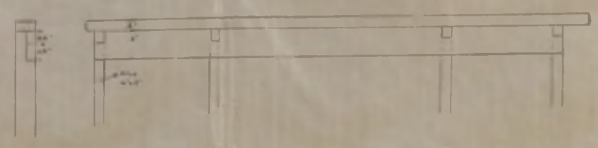
Side View



PLAN



Front Elevation



Detail of Beam over Window Head

Send for drawings 5/11  
1/11  
1/11

Copyright reserved  
1926



