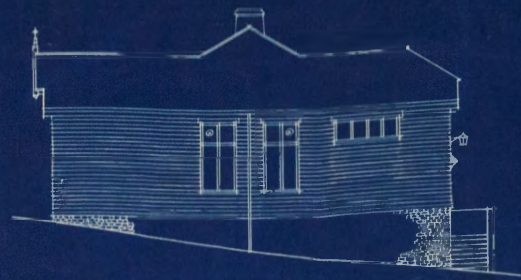


FALKLAND ISLANDS  
REQ 169.

# NEW GOVERNMENT SCHOOL.

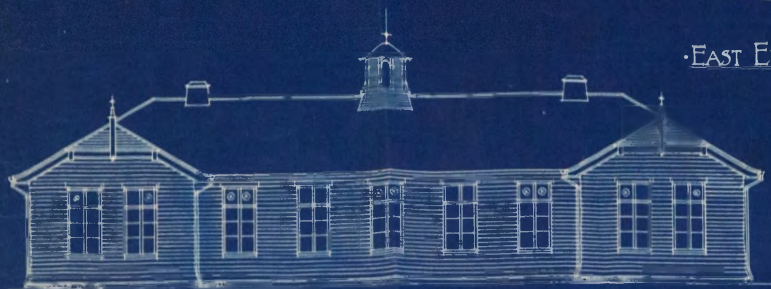
CADRAWING NO 112.



EAST ELEVATION.



SECTION B-B.

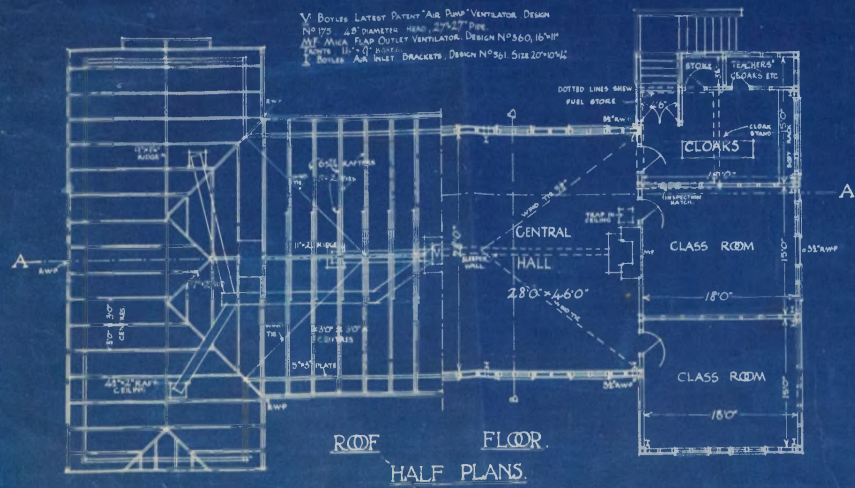


SOUTH ELEVATION.

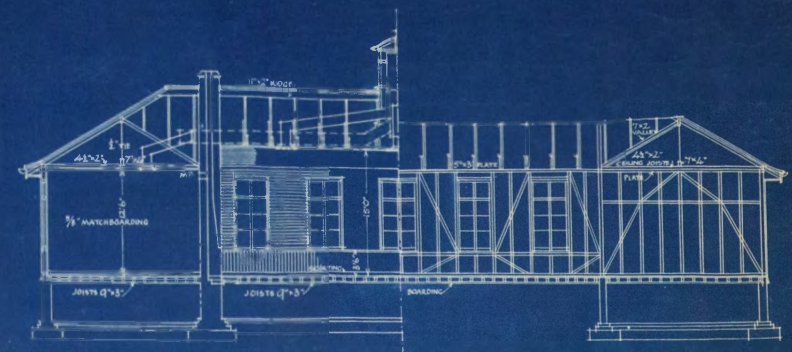


NORTH ELEVATION.

V. BOYLES LATEST PATENT "AIR PUMP" VENTILATOR DESIGN  
NO 172 28" DIAMETER HEAD 25" HGT PIPE  
20" WIDE FAN OUTLET VENTILATOR DESIGN NO 560 16" HGT  
12" DIA. 18" HGT BOILER  
BOYLES "A" INLET BRACKETS DESIGN NO 501 SIZE 20" X 14"

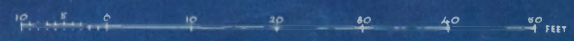


ROOF FLOOR  
HALF PLANS.



SECTION A-A.

SCALE 8 FEET TO ONE INCH.

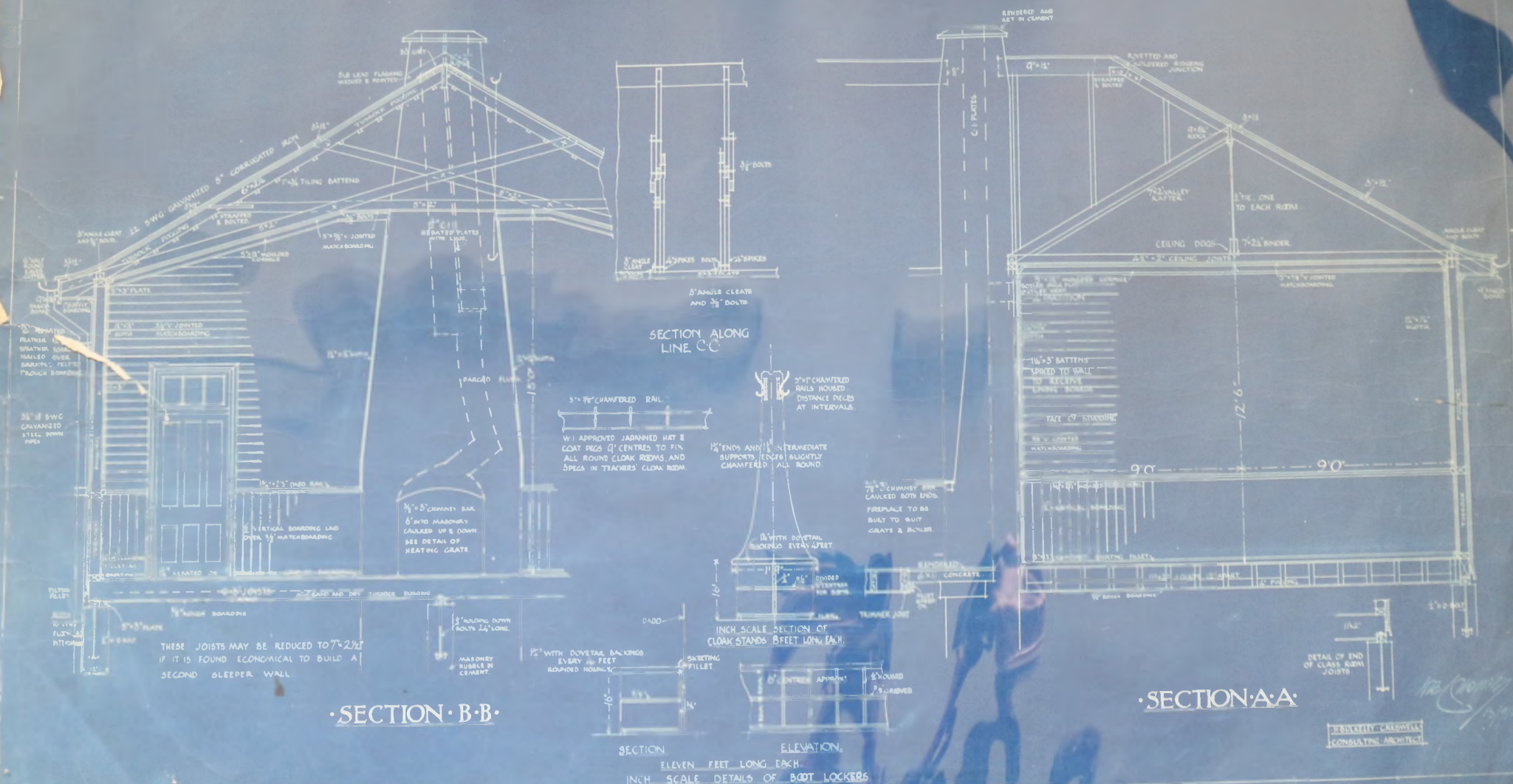


*H. Berkeley Creswell*  
H. BERKELEY CRESWELL  
CONSULTING ARCHITECT.

FALKLAND ISLANDS  
REQ 169

NEW GOVERNMENT SCHOOL.  
HALF INCH SCALE DETAILS.

CA-DRAWING No 113.



SECTION B-B

SECTION A-A

THESE JOISTS MAY BE REDUCED TO 7'-2 1/2" IF IT IS FOUND ECONOMICAL TO BUILD A SECOND BLEEPER WALL

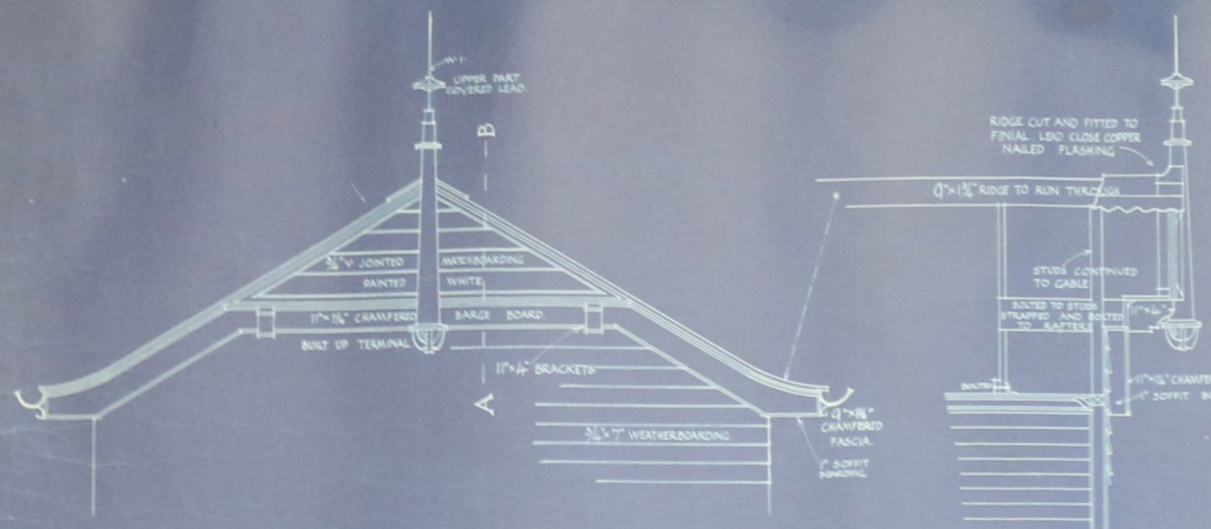
SECTION ELEVATION.  
ELEVEN FEET LONG EACH.  
INCH SCALE DETAILS OF BOOT LOCKERS

FRANKLIN CARROLL  
CONSULTING ARCHITECT

FALKLAND ISLANDS  
REQ 169.

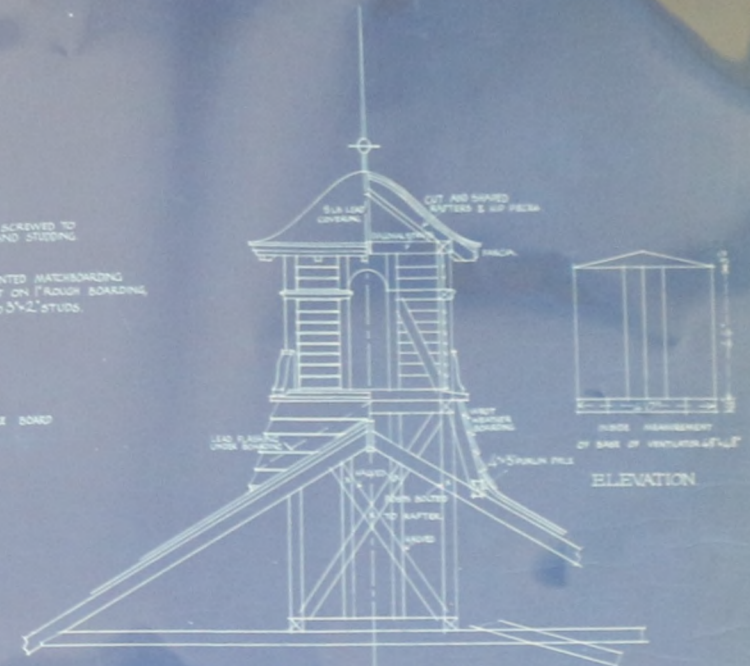
NEW GOVERNMENT SCHOOL.  
HALF INCH SCALE DETAILS.

CADRAWING NO 114.



ELEVATION OF GABLE ON SOUTH ELEVATION.

SECTION A-B THRO GABLE.



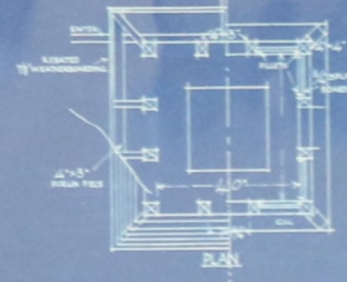
ELEVATION

SECTION



ELEVATION OF GABLE ON NORTH ELEVATION.

SECTION.



PLAN



PLAN

VENTILATION TURRET.

BOYLE'S VENTILATOR

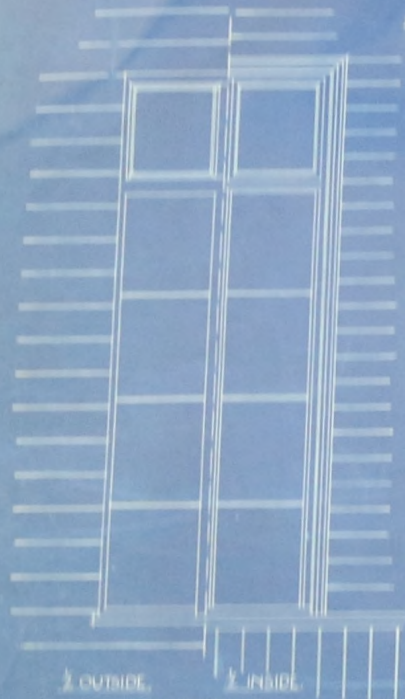
H. BULKELEY-CRESWELL  
CONSULTING ARCHITECT

*Handwritten signature and date*  
1/19/05

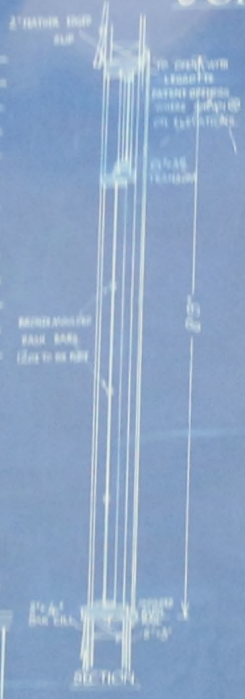
FALKLAND ISLANDS,  
REQ 109.

# NEW GOVERNMENT SCHOOL, JOINERY DETAILS.

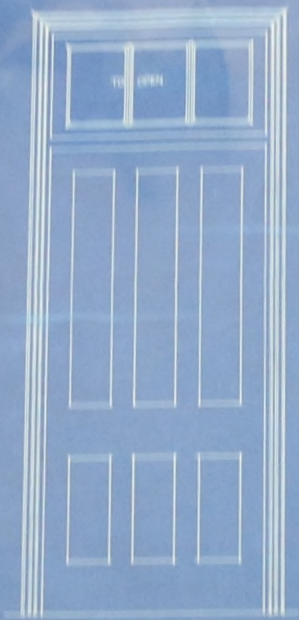
CADRAWING NO 115.



ELEVATION.



SECTION.



ELEVATION.



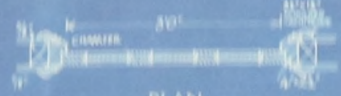
SECTION.



ELEVATION.



SECTION.



SCALE: ONE INCH = ONE FOOT.

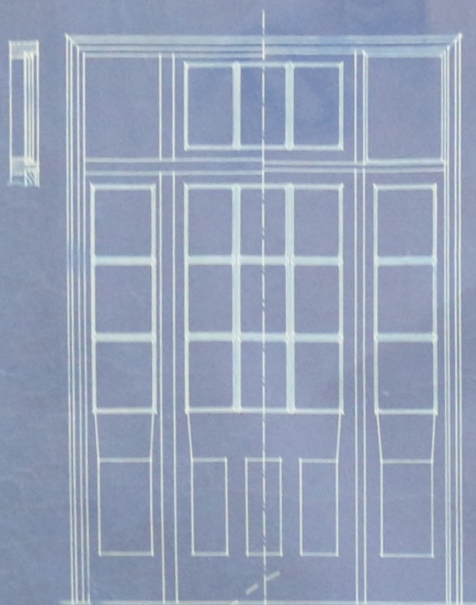
H. B. CREDWELL  
CONSULTING ARCHITECT

*Handwritten signature and date: H. B. Credwell 1/11/15*

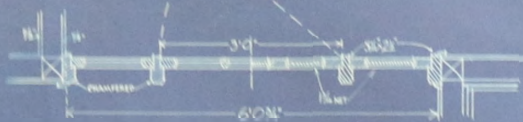
FALKLAND ISLANDS  
REQ 169

# NEW GOVERNMENT SCHOOL. JOINERY DETAILS.

CA-DRAWING No 116

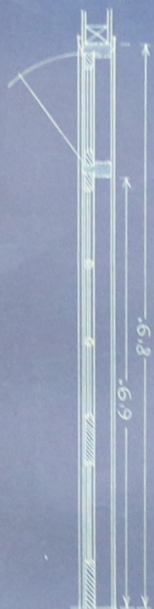


TO CENTRAL HALL  
TO CLOAK ROOM  
HALF ELEVATIONS

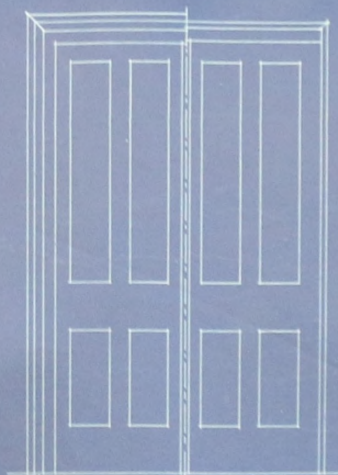


ABOVE LOCK RAIL  
BELOW LOCK RAIL  
HALF PLANS

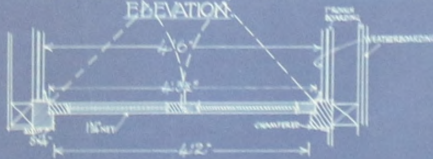
GLAZED PARTITION BETWEEN  
CLOAK ROOM & CENTRAL HALL



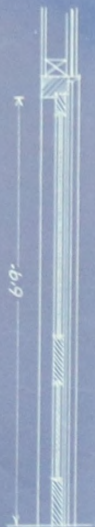
SECTION



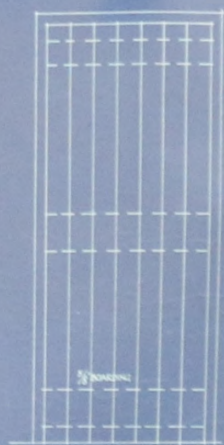
INSIDE  
OUTSIDE  
ELEVATION



PLAN  
ENTRANCE DOORS



SECTION



ELEVATION



PLAN  
DOOR TO FUEL STORE



SECTION

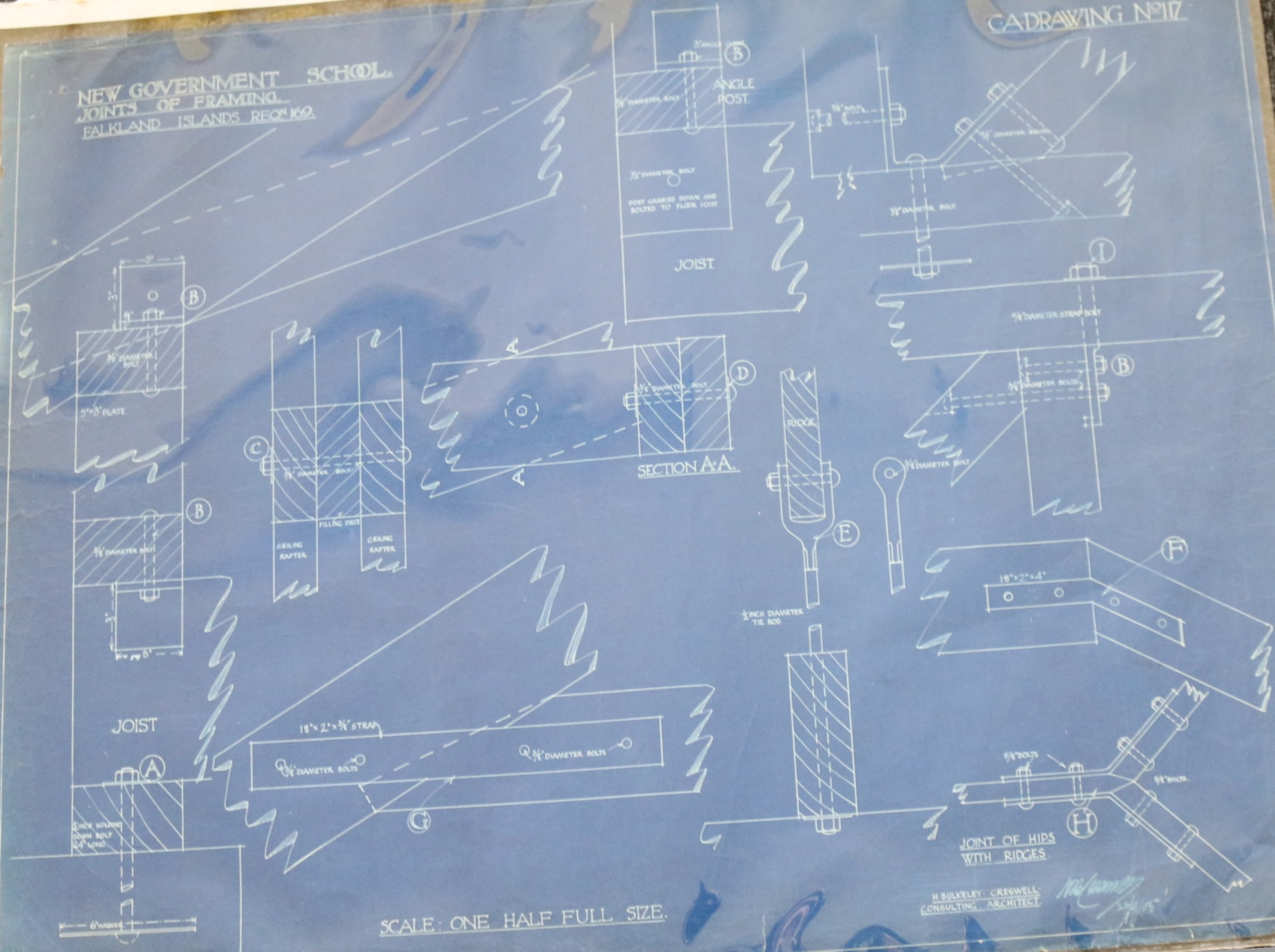
SCALE: ONE INCH = ONE FOOT

H. BILLYEY & BISHOP  
CONSULTING ARCHITECTS

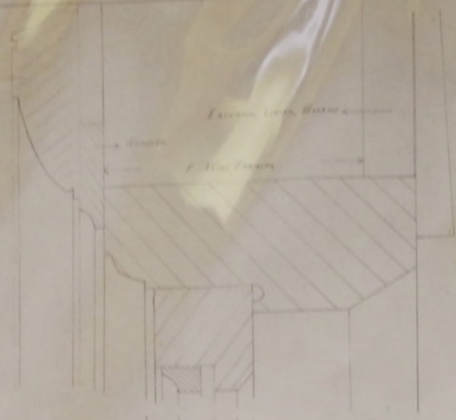
*Handwritten signature and date*  
1905

NEW GOVERNMENT SCHOOL  
JOINTS OF FRAMING  
FALKLAND ISLANDS REQ. 169.

CADRAWING N°17



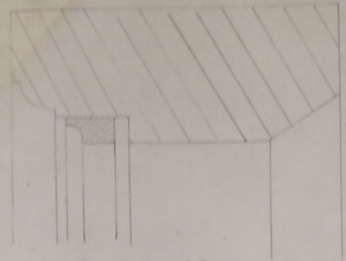
FALKLAND ISLANDS REGD 1911  
FULL SIZE AND 1/4" FULL SIZE OF WINDOWS AND FINISHING, DRAWING A



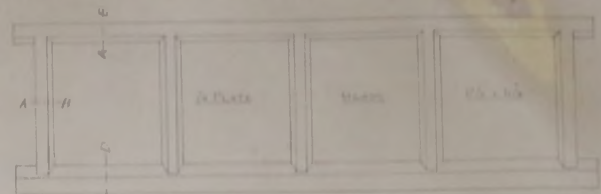
EXTERIOR WALL FINISHING

EXTERIOR WALL FINISHING

EXTERIOR WALL FINISHING



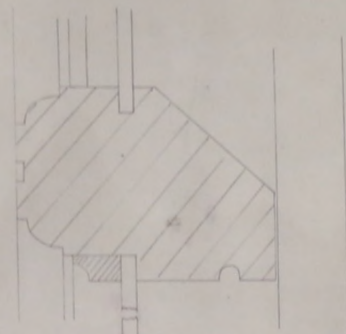
SECTION AB



1 WINDOW

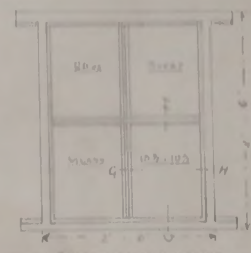


2 WINDOW



DETAIL GLAZING PANEL D

SECTION AB

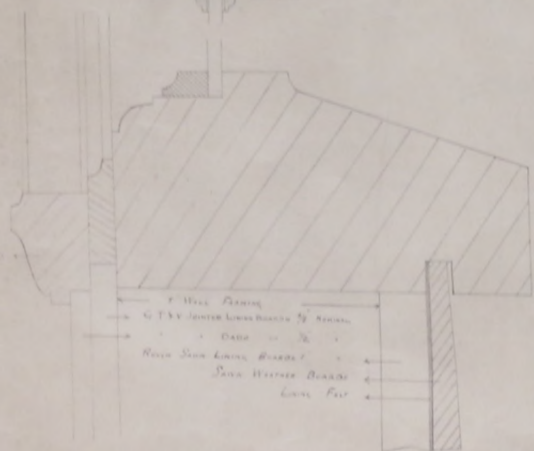


1 WINDOW

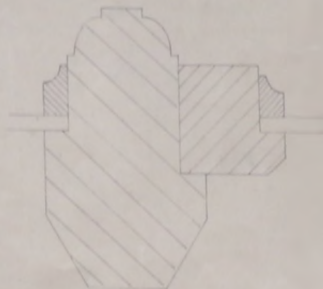
4 Windows with 2 Lights glazed in Terrace  
1st Floor and  
2nd Floor at A-B



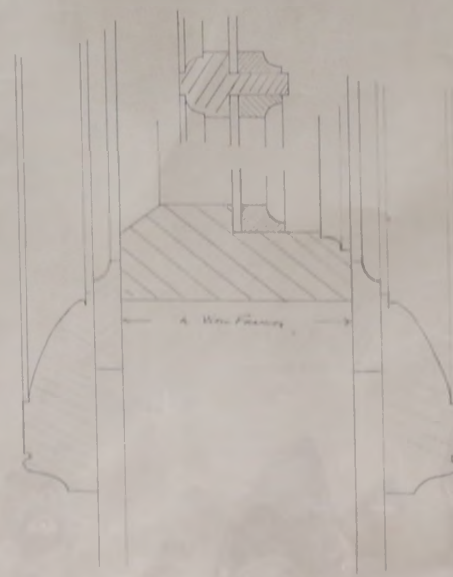
EXTERNAL ELEVATION WINDOW



SECTION CD



SECTION EF



SECTION GH

1. Wall Finishing  
2. 1/2" Joints  
3. 1/2" Joints  
4. 1/2" Joints  
5. 1/2" Joints  
6. 1/2" Joints  
7. 1/2" Joints  
8. 1/2" Joints  
9. 1/2" Joints  
10. 1/2" Joints  
11. 1/2" Joints  
12. 1/2" Joints  
13. 1/2" Joints  
14. 1/2" Joints  
15. 1/2" Joints  
16. 1/2" Joints  
17. 1/2" Joints  
18. 1/2" Joints  
19. 1/2" Joints  
20. 1/2" Joints  
21. 1/2" Joints  
22. 1/2" Joints  
23. 1/2" Joints  
24. 1/2" Joints  
25. 1/2" Joints  
26. 1/2" Joints  
27. 1/2" Joints  
28. 1/2" Joints  
29. 1/2" Joints  
30. 1/2" Joints  
31. 1/2" Joints  
32. 1/2" Joints  
33. 1/2" Joints  
34. 1/2" Joints  
35. 1/2" Joints  
36. 1/2" Joints  
37. 1/2" Joints  
38. 1/2" Joints  
39. 1/2" Joints  
40. 1/2" Joints  
41. 1/2" Joints  
42. 1/2" Joints  
43. 1/2" Joints  
44. 1/2" Joints  
45. 1/2" Joints  
46. 1/2" Joints  
47. 1/2" Joints  
48. 1/2" Joints  
49. 1/2" Joints  
50. 1/2" Joints  
51. 1/2" Joints  
52. 1/2" Joints  
53. 1/2" Joints  
54. 1/2" Joints  
55. 1/2" Joints  
56. 1/2" Joints  
57. 1/2" Joints  
58. 1/2" Joints  
59. 1/2" Joints  
60. 1/2" Joints  
61. 1/2" Joints  
62. 1/2" Joints  
63. 1/2" Joints  
64. 1/2" Joints  
65. 1/2" Joints  
66. 1/2" Joints  
67. 1/2" Joints  
68. 1/2" Joints  
69. 1/2" Joints  
70. 1/2" Joints  
71. 1/2" Joints  
72. 1/2" Joints  
73. 1/2" Joints  
74. 1/2" Joints  
75. 1/2" Joints  
76. 1/2" Joints  
77. 1/2" Joints  
78. 1/2" Joints  
79. 1/2" Joints  
80. 1/2" Joints  
81. 1/2" Joints  
82. 1/2" Joints  
83. 1/2" Joints  
84. 1/2" Joints  
85. 1/2" Joints  
86. 1/2" Joints  
87. 1/2" Joints  
88. 1/2" Joints  
89. 1/2" Joints  
90. 1/2" Joints  
91. 1/2" Joints  
92. 1/2" Joints  
93. 1/2" Joints  
94. 1/2" Joints  
95. 1/2" Joints  
96. 1/2" Joints  
97. 1/2" Joints  
98. 1/2" Joints  
99. 1/2" Joints  
100. 1/2" Joints

APPROVED  
INSPECTING ENGINEER

# FANGLAND ISLAND - BOSTON

THE FANGLAND ISLAND, BOSTON, MASSACHUSETTS - PLAN NO. 1



1. School in Central Hall, Plan, Class Room



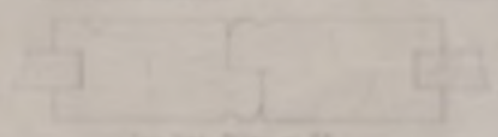
2. School, Plan, Class Room



3. Entrance, Plan



4. School in Front of Class Room, Plan, Class Room



5. School, Elevation of 55



6. School, Elevation of 55



7. School, Elevation of 55



8. School, Elevation of 55

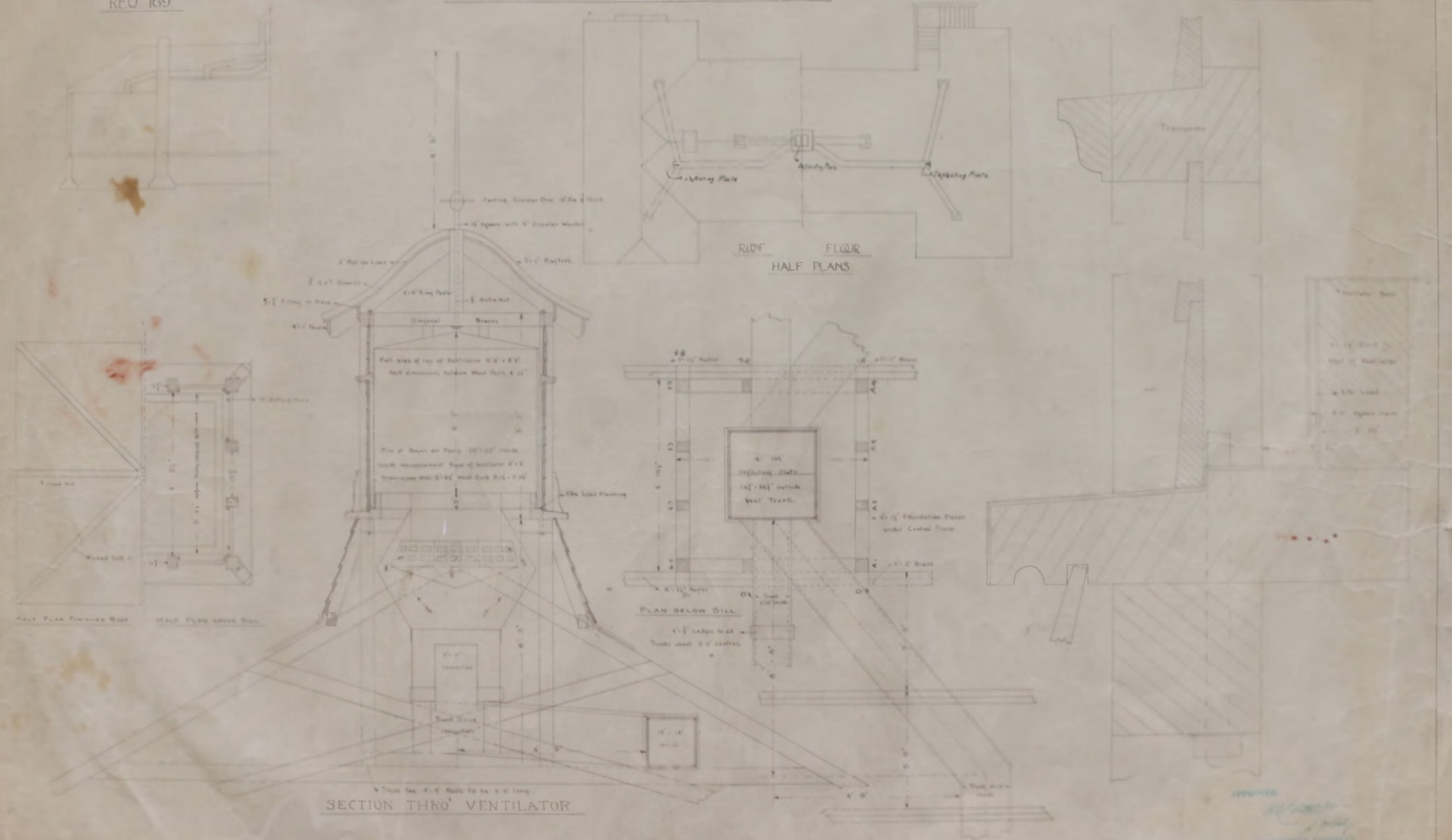


FALKLAND ISLANDS  
REQ 169

# NEW GOVERNMENT SCHOOL.

Full size and Inch Details of Ventilator

DRAWING C.



SECTION THRO VENTILATOR

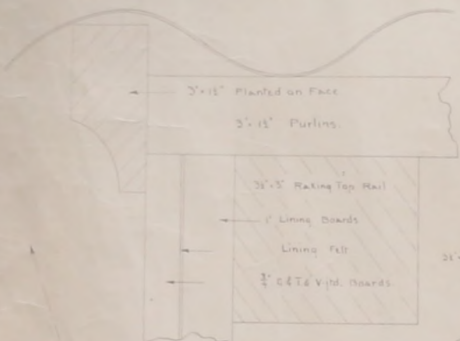
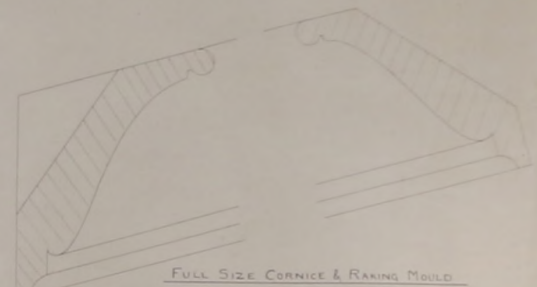
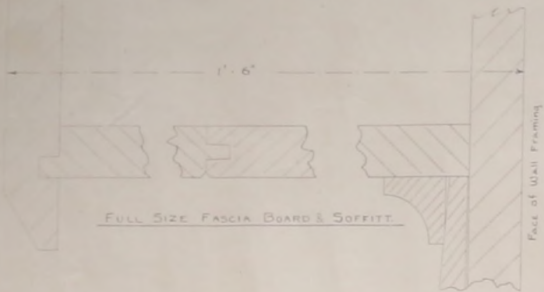
APPROVED  
*[Signature]*  
ARCHITECT

2(R)

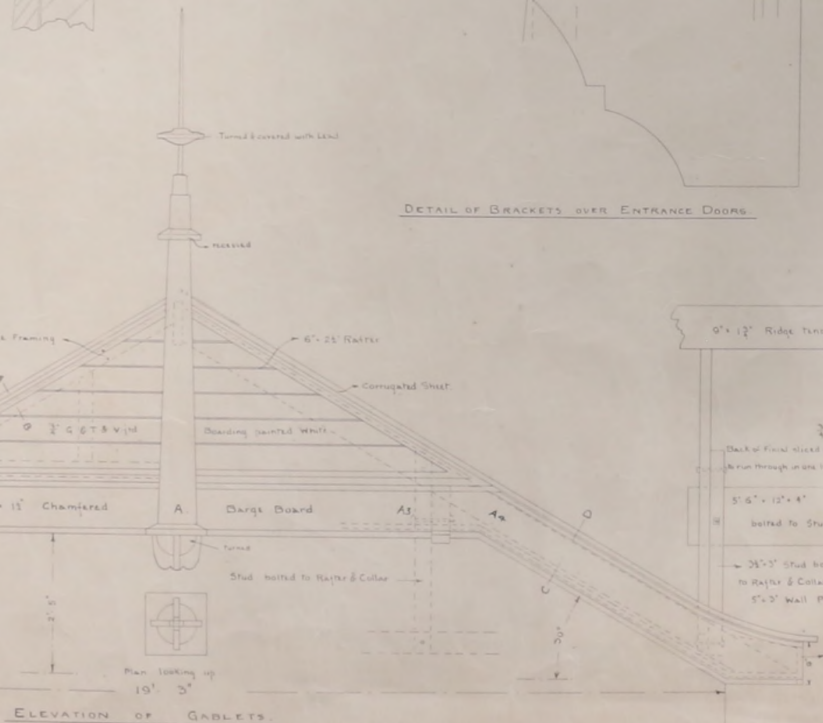
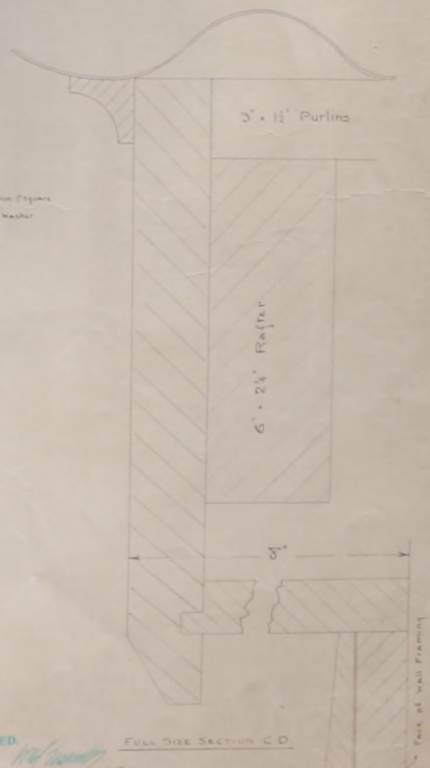
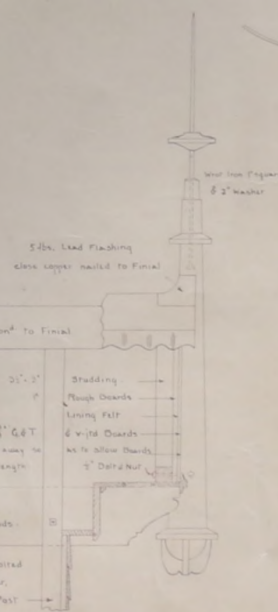
REQ. 169

FALKLAND ISLANDS  
Full Size and 1/2 Full Size of Gablets etc.

DRAWING D



DETAIL OF BRACKETS OVER ENTRANCE DOORS



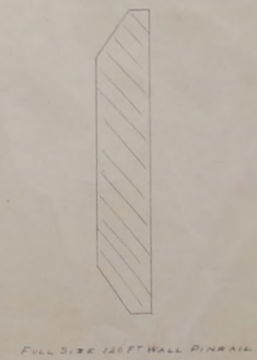
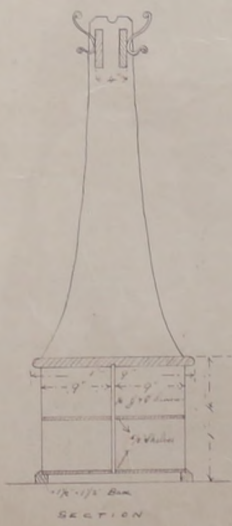
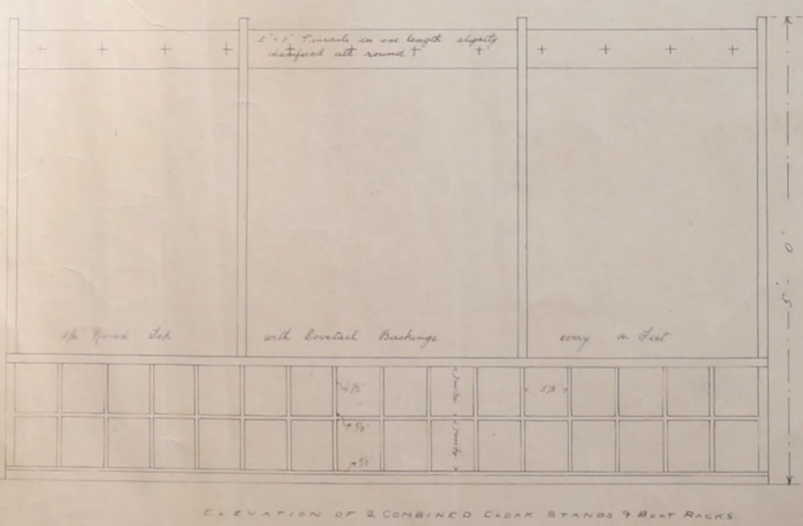
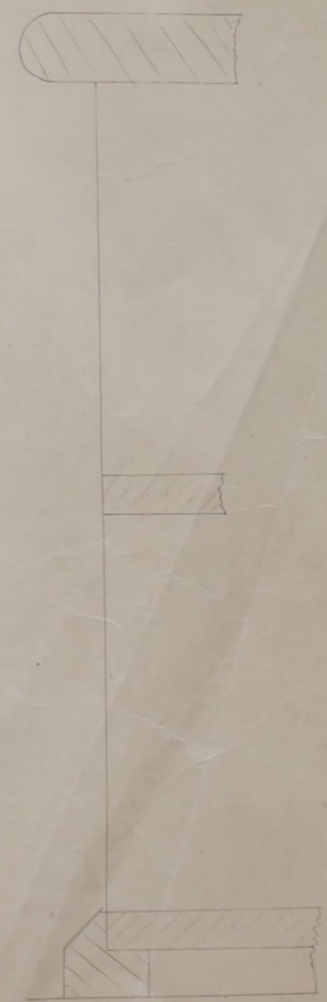
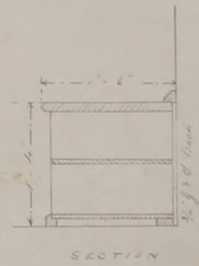
APPROVED

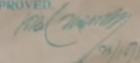
INSPECTING ENGINEER

FULL SIZE SECTION C-D

FALKLAND ISLANDS REQ<sup>d</sup> 169/1

FULL SIZE AND 1/8<sup>th</sup> FULL SIZE DETAILS OF BOOT RACKS &c  
DRAWING E



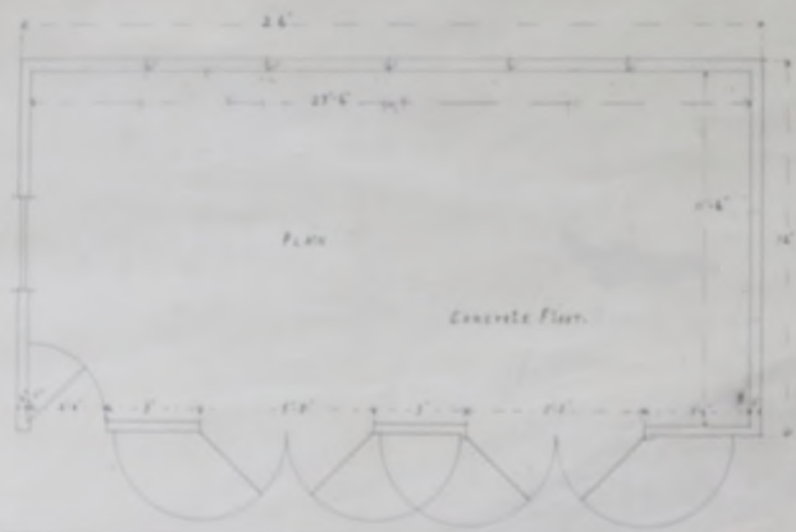
APPROVED  
  
 INSPECTING ENGINEER



Front Elevation (East)



Side Elevation



NEW PLAYHOUSE.  
 ELEMENTARY SCHOOL.  
 SCALE 1/4" = 1'-0"

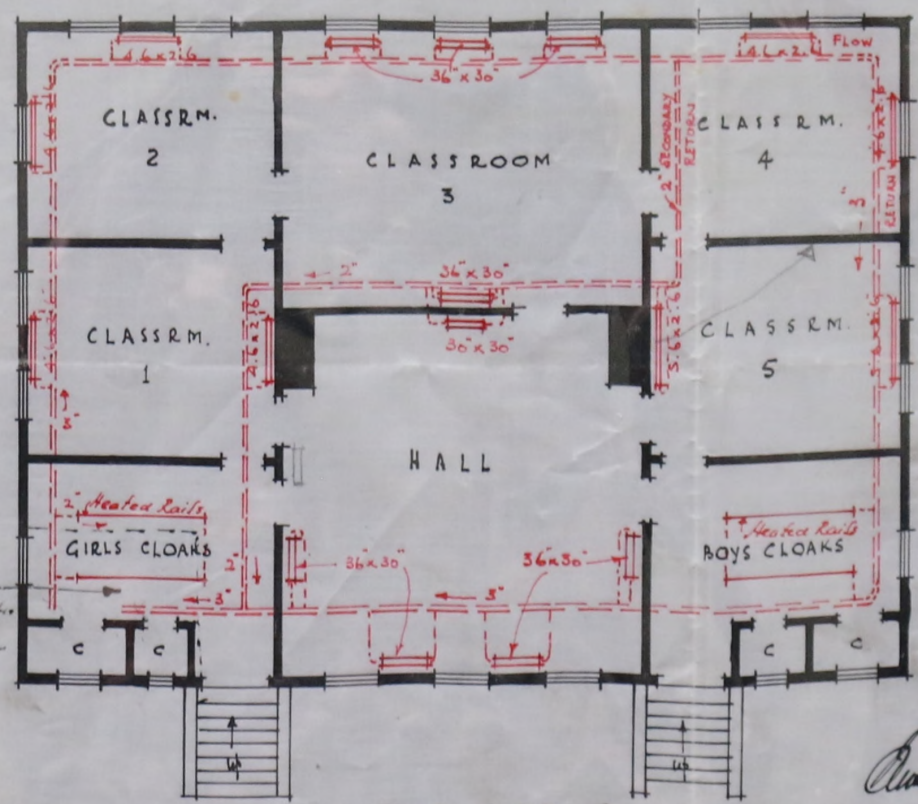


Rear Elevation (West)



42

FALKLAND ISLANDS GOVERNMENT SCHOOL, STANLEY  
PROPOSED CENTRAL HEATING SCHEME.

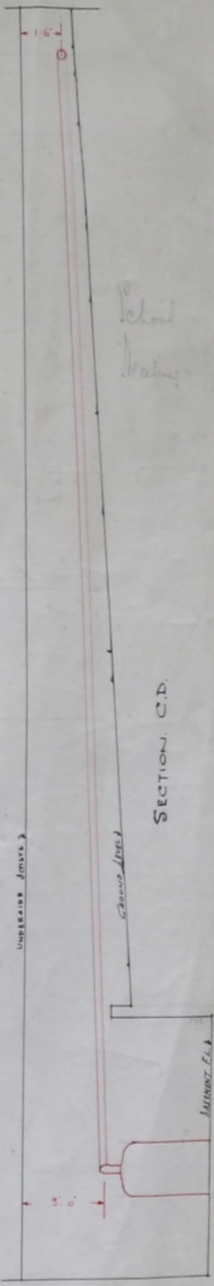
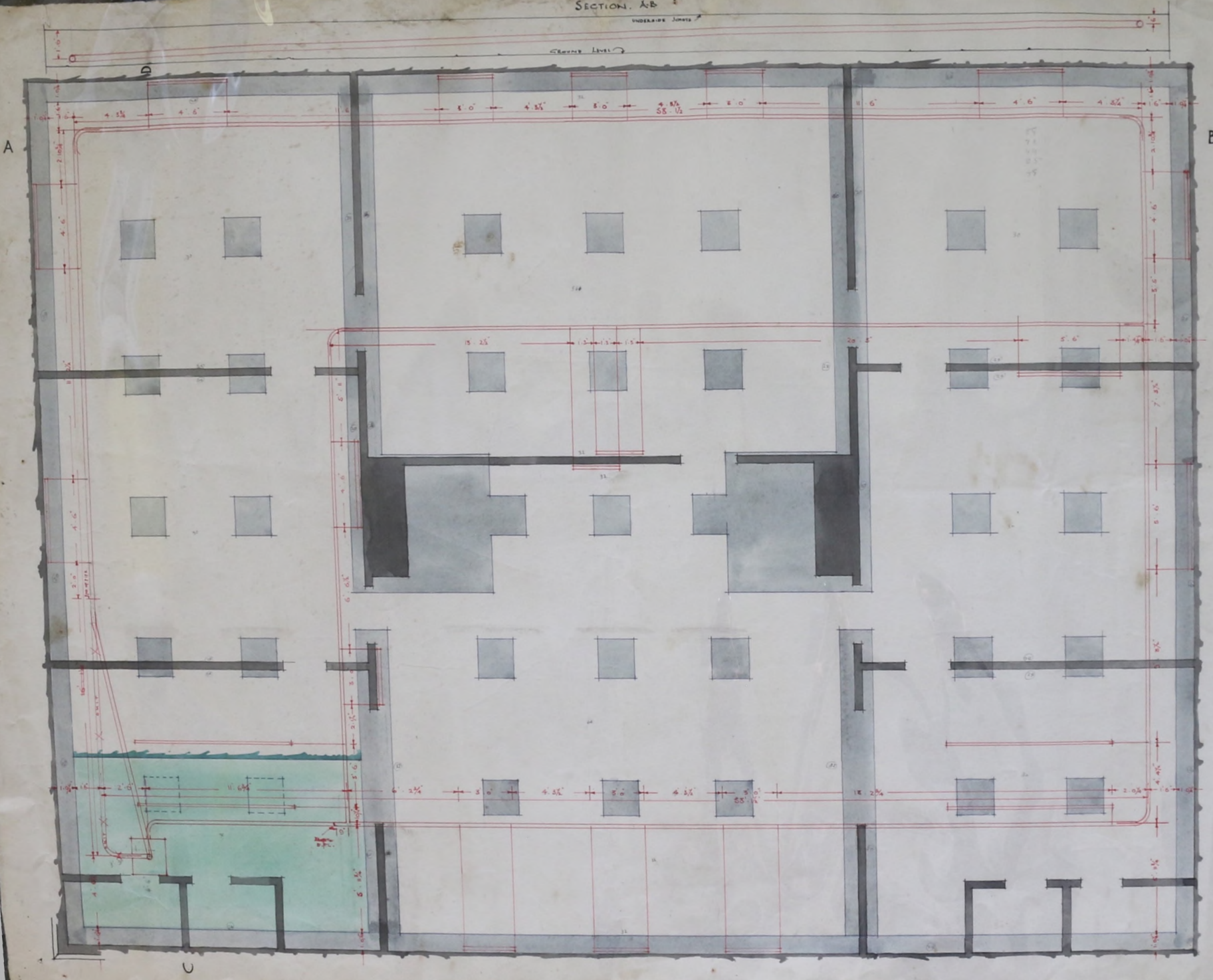


GROUND FLOOR PLAN

SCALE: 8:0 TO 1

*Arthur Woodhead.*  
A.R.I.B.A.  
EXECUTIVE ENGINEER  
FEB. 1944.

SECTION A-B

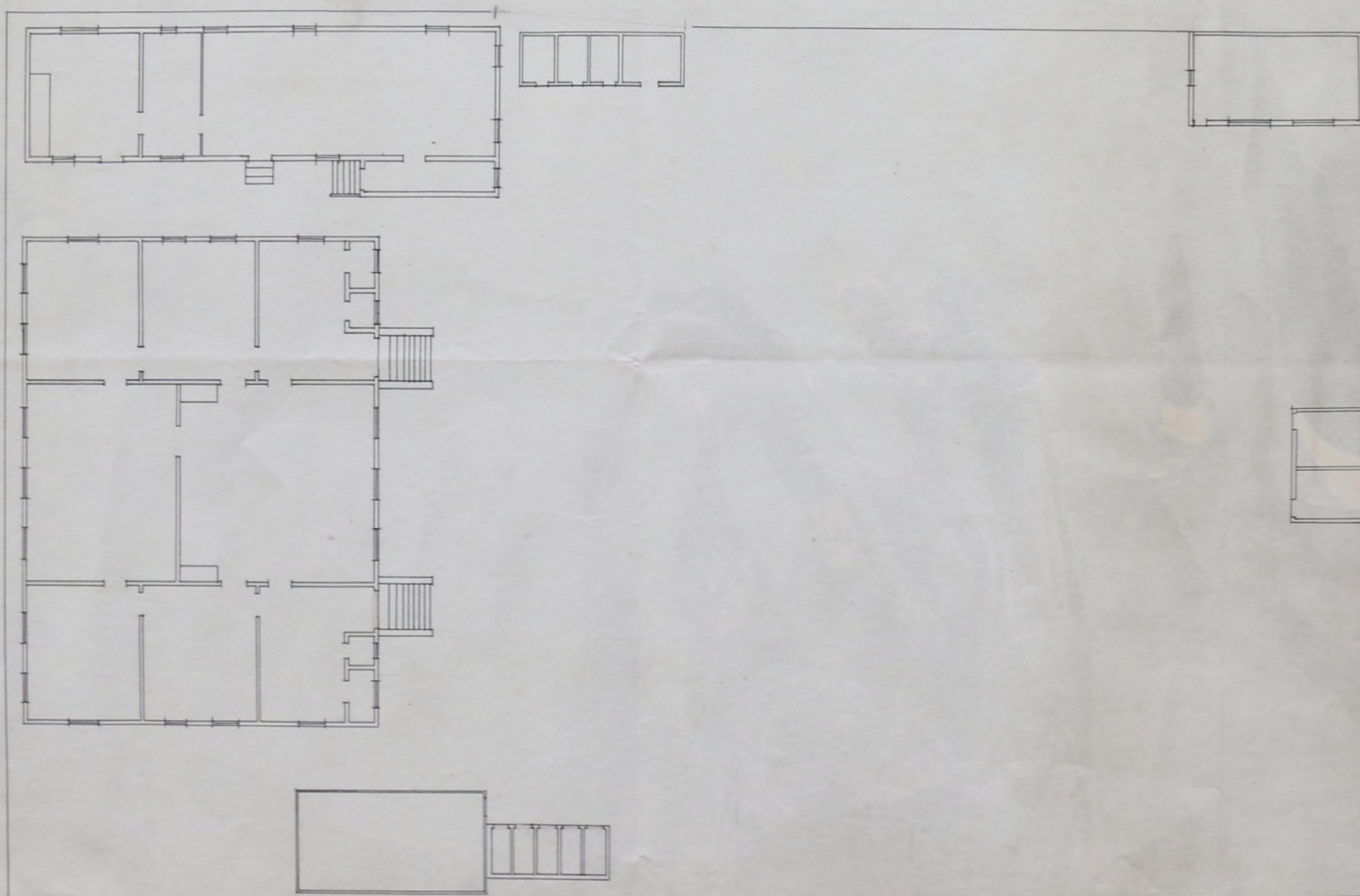


Below Main

SECTION C-D

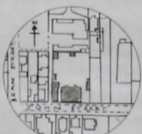
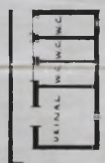
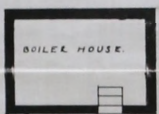
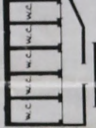
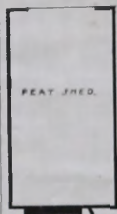
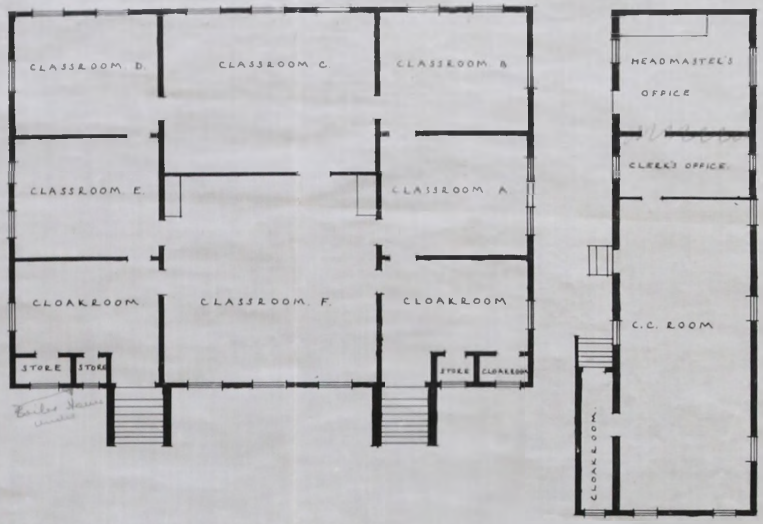
185

Seneca School



Govt School in Seneca Sept 1945

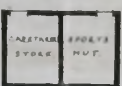
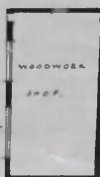
J O H N S T R E E T



BLOCK PLAN SCALE 1/2,700

FALKLAND ISLANDS  
GOVERNMENT SCHOOL  
 AS EXISTING, SEPTEMBER 1945.

*Alan Woodcock*  
 A.R.I.S.A.



FORWARDED & DRAWN  
 BY *ALAN WOODCOCK*

EX. ENS  
 P.W.D.  
 FALKLAND ISLANDS GOVT  
 STANLEY  
 SEPTEMBER 1945.

SCALE EIGHT FEET TO ONE INCH.





PLAN (Scale 1/8" = 1'-0")

N



WEST ELEVATION



NORTH ELEVATION



SOUTH ELEVATION

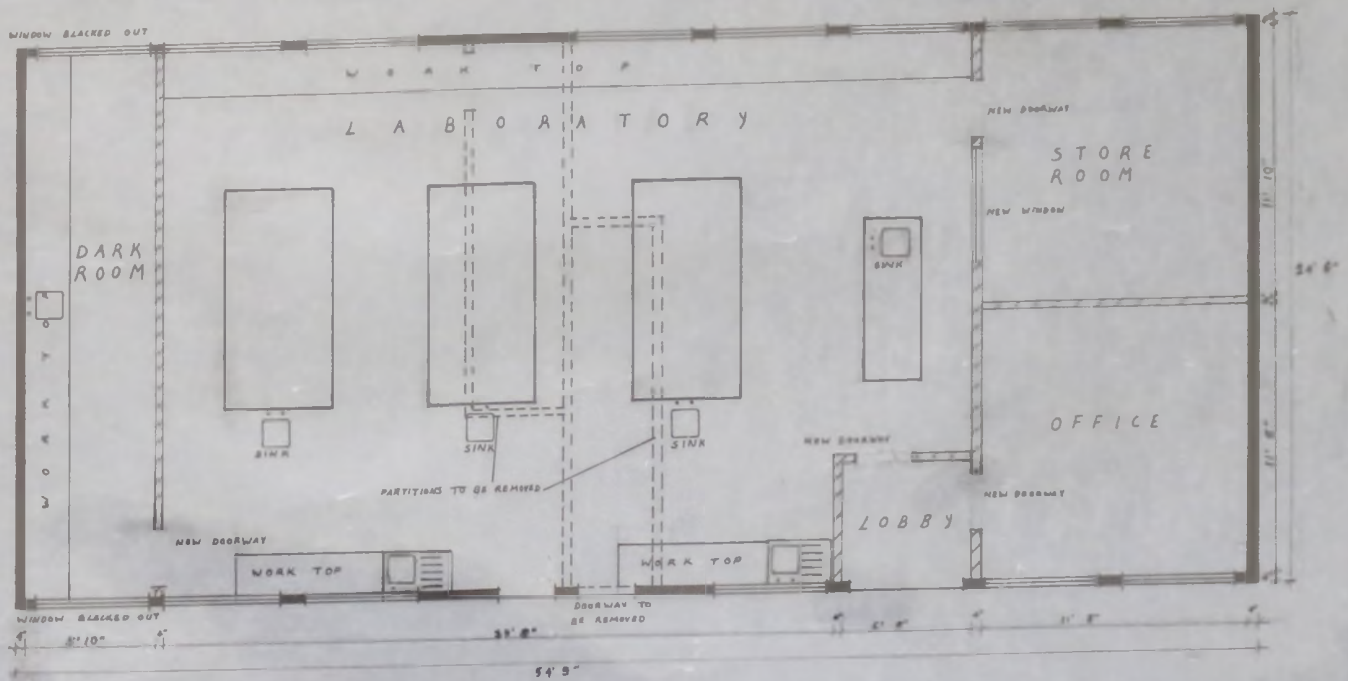
(Scale 1/8" = 1'-0")



EAST ELEVATION



Senior School Lab.

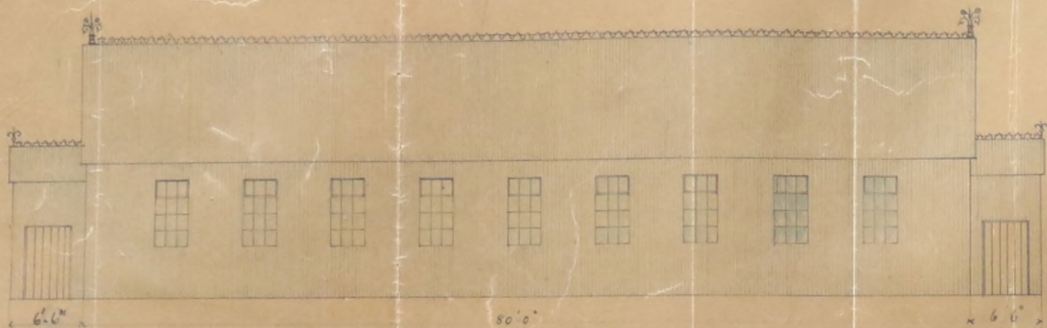


Dark Room Sink

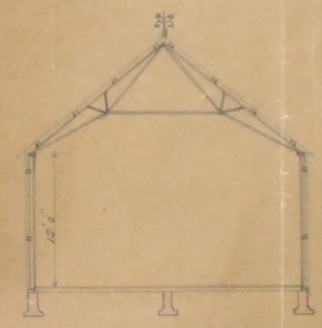
MORWOOD & CO.  
ENGINEERS AND  
WOODWORK IRONWORK  
SONS  
BIRMINGHAM

*Appx. 1894*

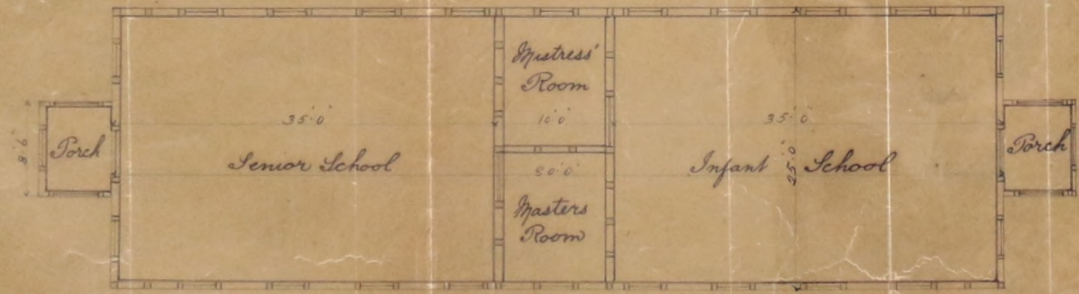
*W. H. ...  
27100*



Side Elevation



Section



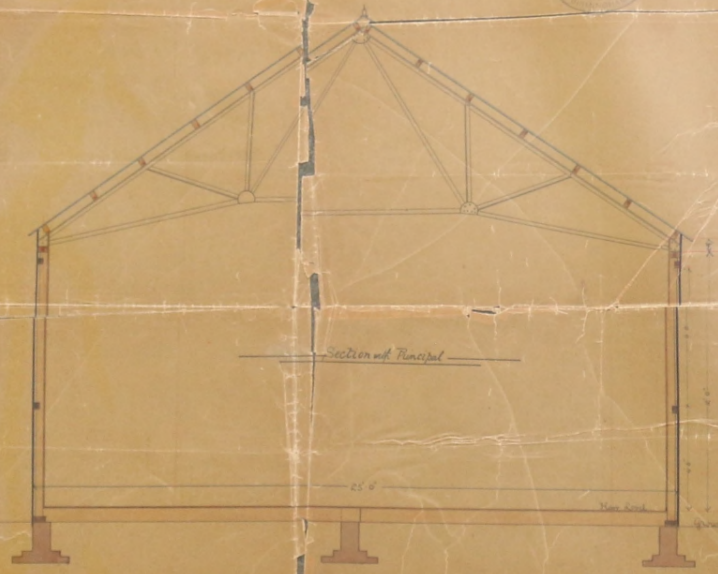
Plan



End Elevation

Scale 1/4" = 1 Foot

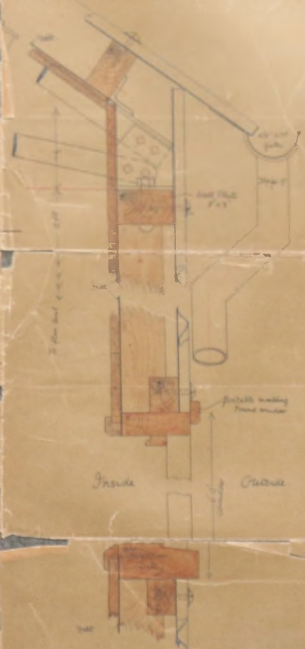
SCHOOL ROOM FOR FALKLAND ISLAND  
CROWN AGENTS FOR THE COLONIES



Section of Principal



Details of Principals  
Scale 3/16

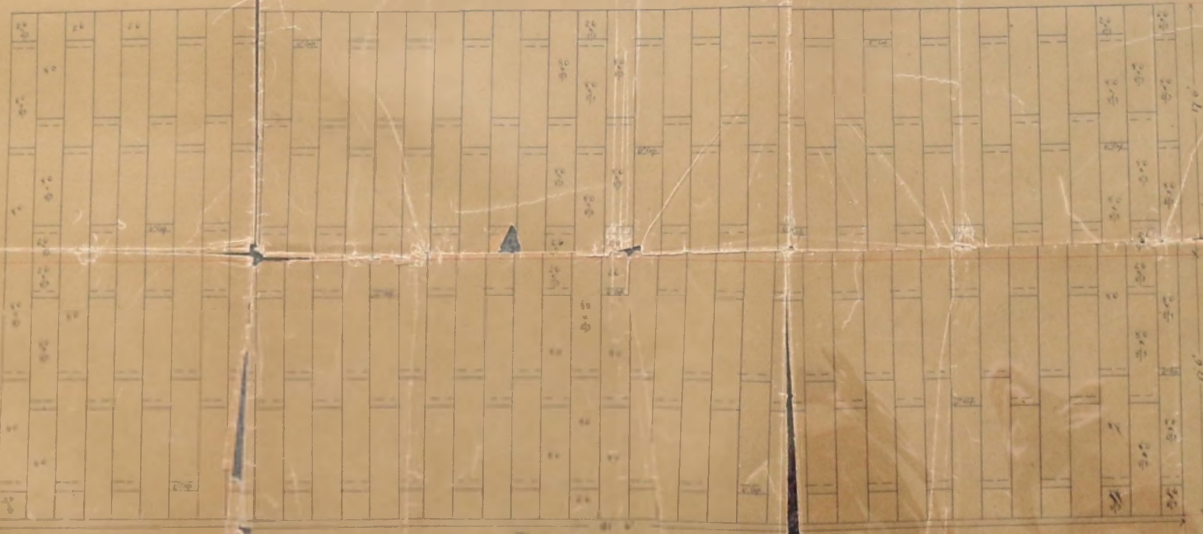
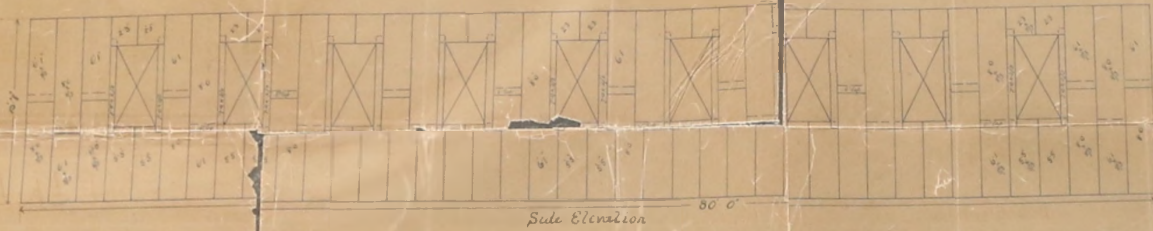
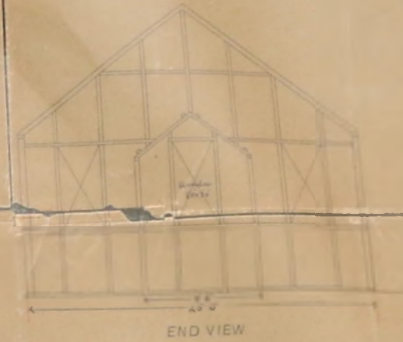
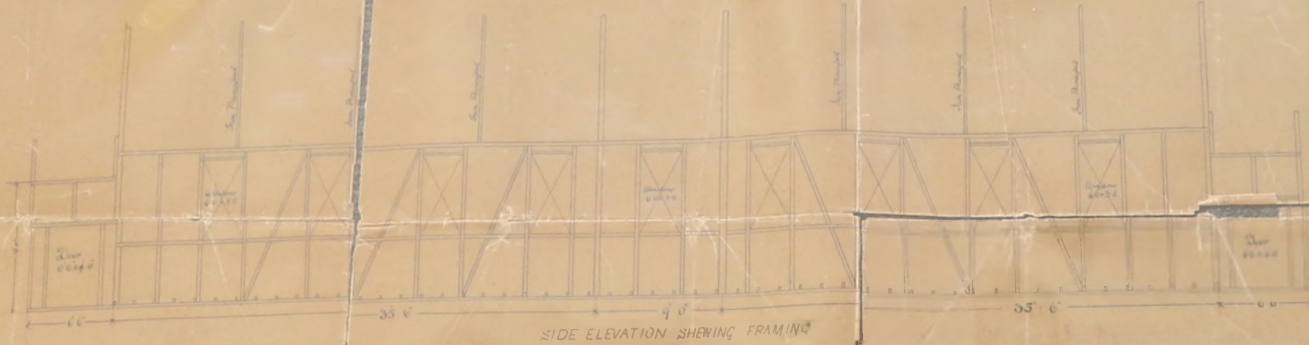


Section of Base of Building  
Scale 3/16



Plan Details on ground

Corner Joint    Framing Joint    Partition Joint    Section of Partition Joint  
Scale 1/4" = 1'



SCHOOL ROOM FOR FALKLAND ISLAND  
 TO THE  
 CROWN AGENTS FOR THE COLONIES

SCALE 1/4" = 1 Foot

