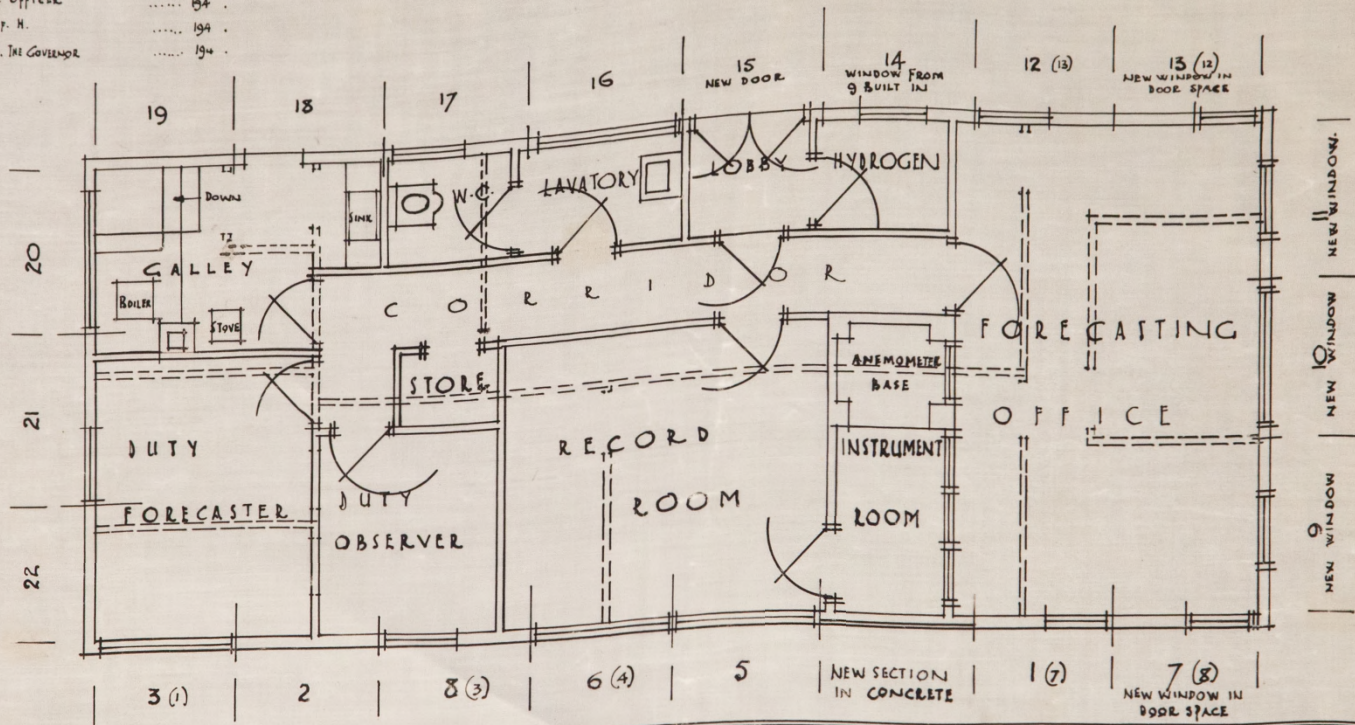


MET. OFFICE - PROPOSED... DEC 1944

APPD. MET. OFFICER 194 .
 B. of. H. 194 .
 H. E. THE GOVERNOR 194 .



FALKLAND ISLANDS GOVERNMENT
 PROPOSED METEOROLOGICAL OFFICE AT STANLEY

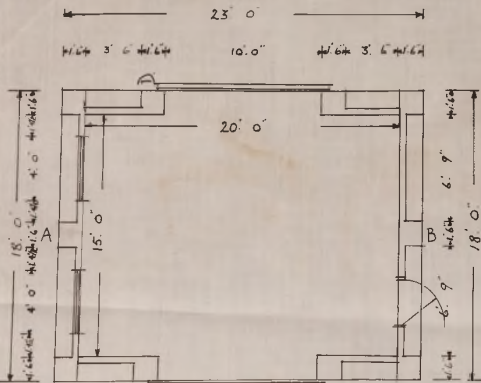
(TO BE CONSTRUCTED FROM
 A BUILDING NOW AT TUSSAC POINT)

A.R.I.B.A.

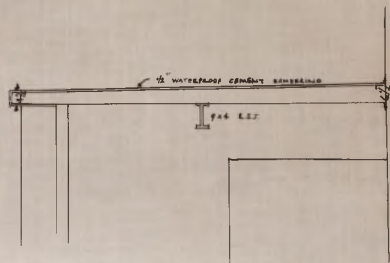
EX: ENG.
 P. W. D.
 STANLEY.
 DEC: 1944

SCALE: 4' 0" TO 1"

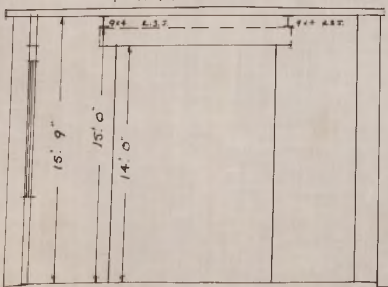
PROPOSED BALLOON SHED.
 METEOROLOGICAL OFFICE
 STANLEY, FALKLAND ISLANDS.
 SCALE: 4" 0' TO ONE INCH.



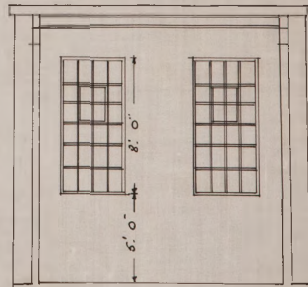
PLAN



1/2" DETAIL ROOF.

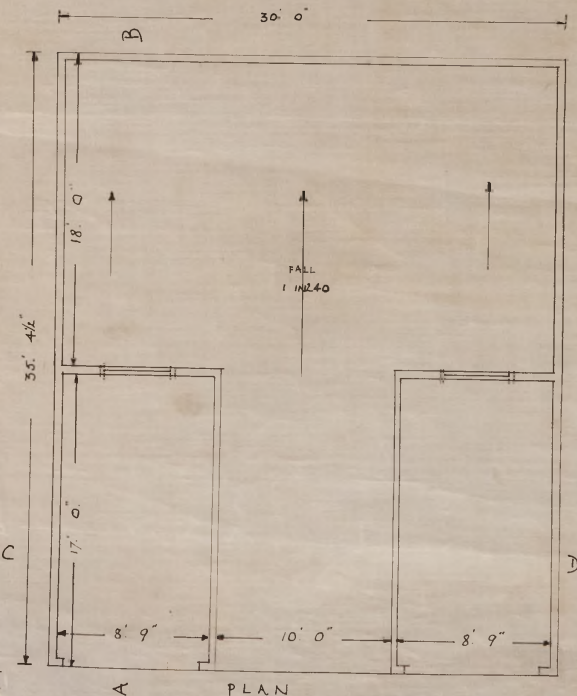
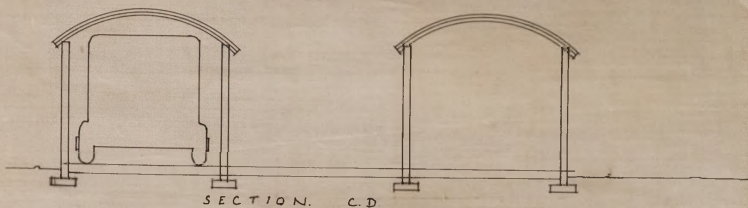
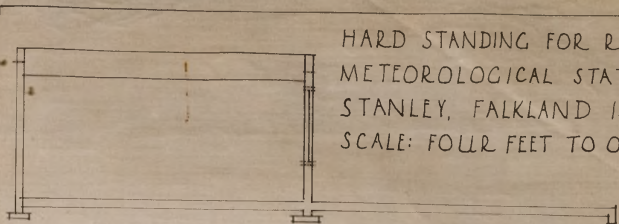


SECTION AB.



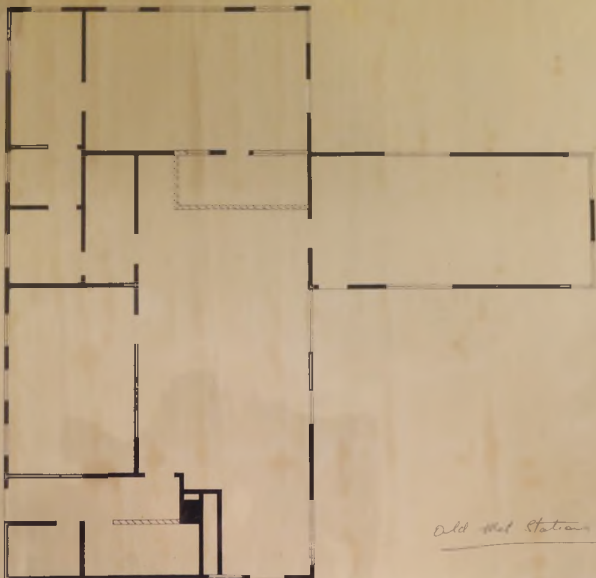
SECTION CD

HARD STANDING FOR RADAR VAN.
METEOROLOGICAL STATION
STANLEY, FALKLAND ISLANDS.
SCALE: FOUR FEET TO ONE INCH.

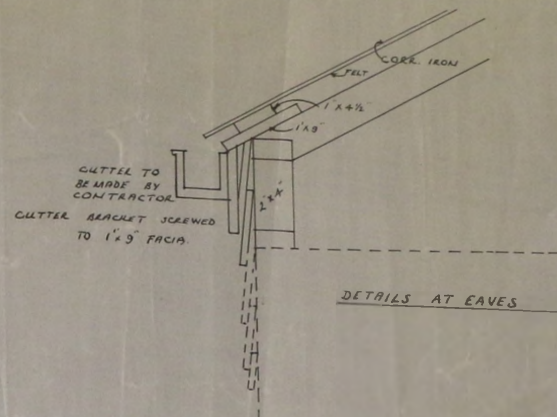
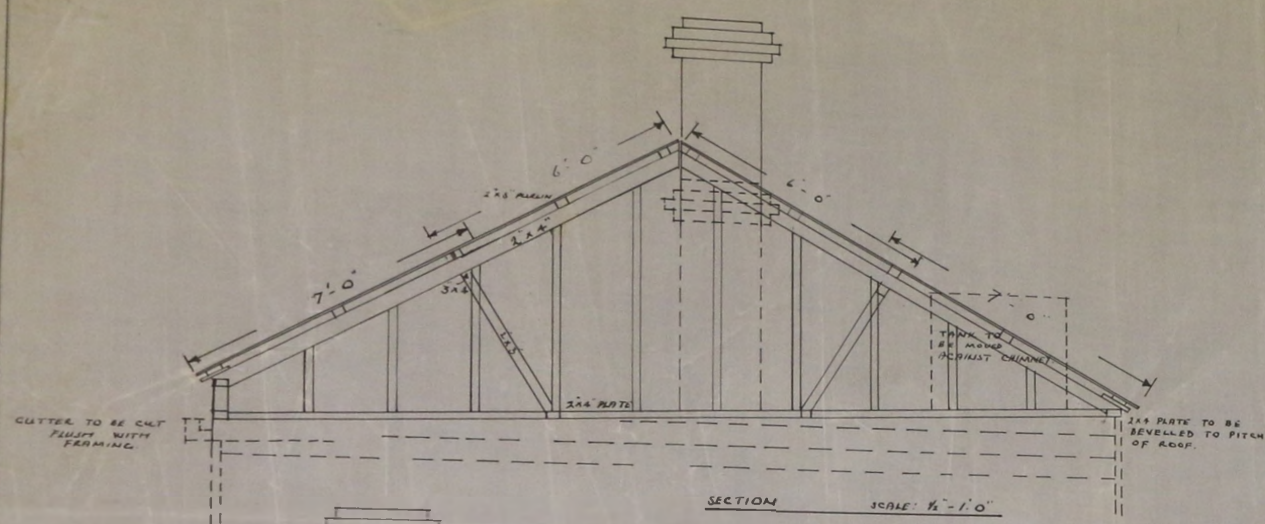


A.E.I.B.A.
EXECUTIVE ENGINEER
P.W.D. STANLEY, F.I.S.
DECEMBER, 1946.

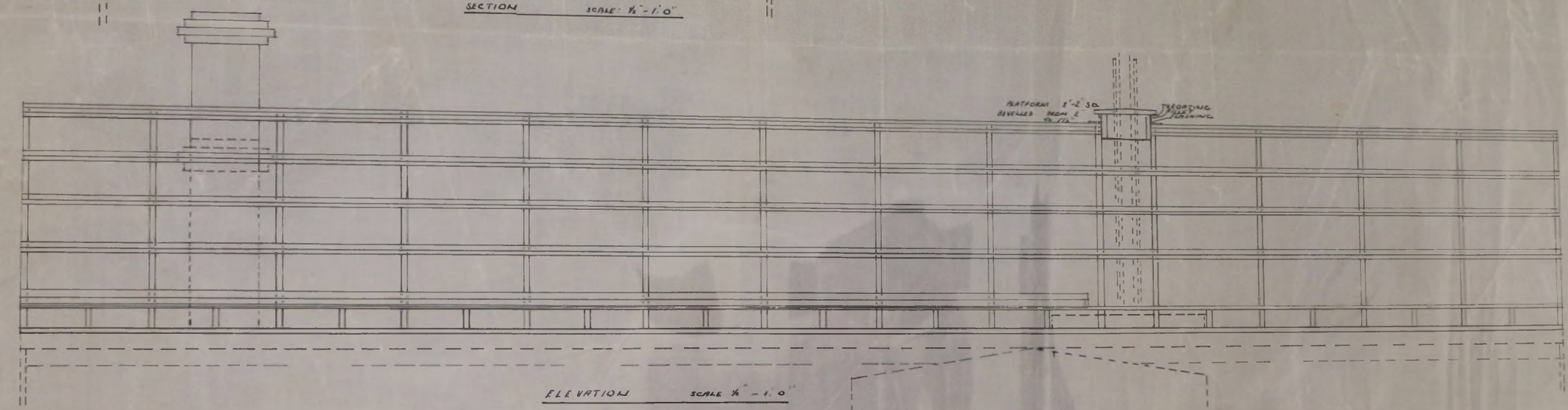
TEX
4/10



Old Met Station



NOTES -
 All measurements are approximate only
 & should be taken from the actual building
 if the existing building is to be replaced.



METEOROLOGICAL STATION STANLEY ROOF DRGS.

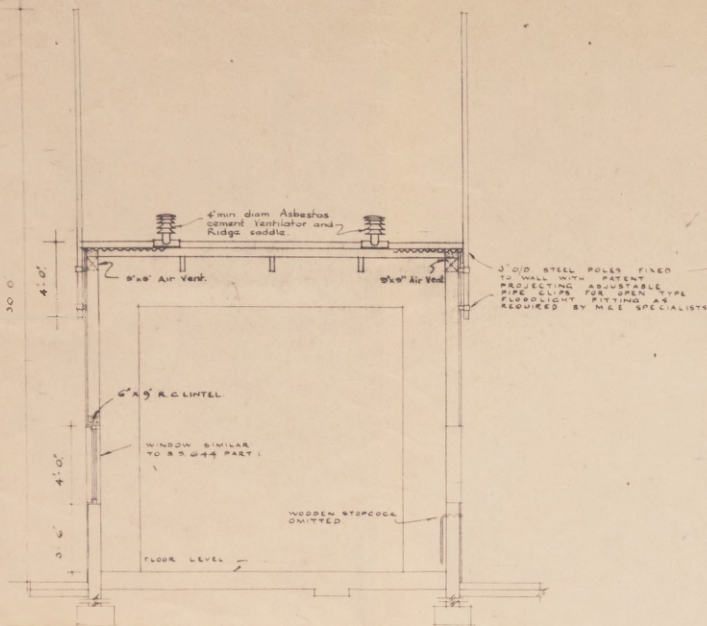
Handwritten signature or initials.

MET. OFFICE - BLOCK PLAN - 9 JAN 1948

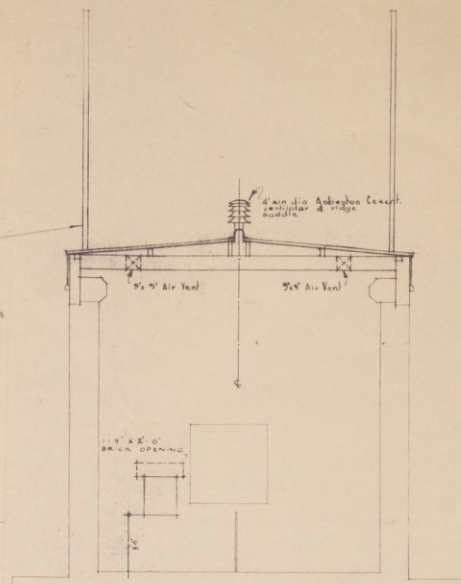
MCI-41-ME-0006

BLOCK PLAN
METEOROLOGICAL BUILDINGS

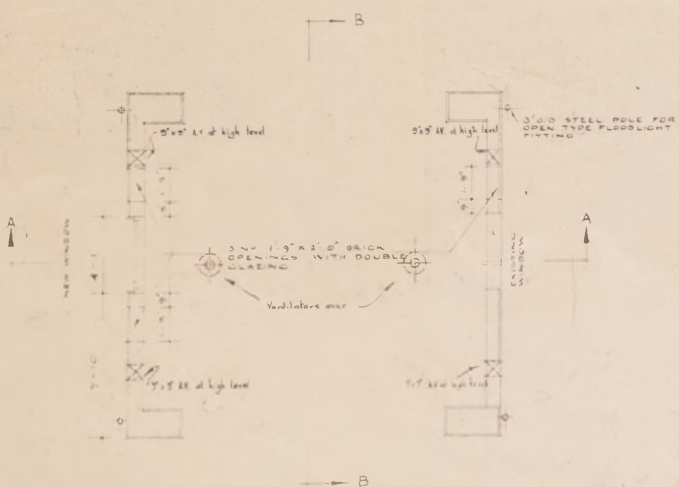




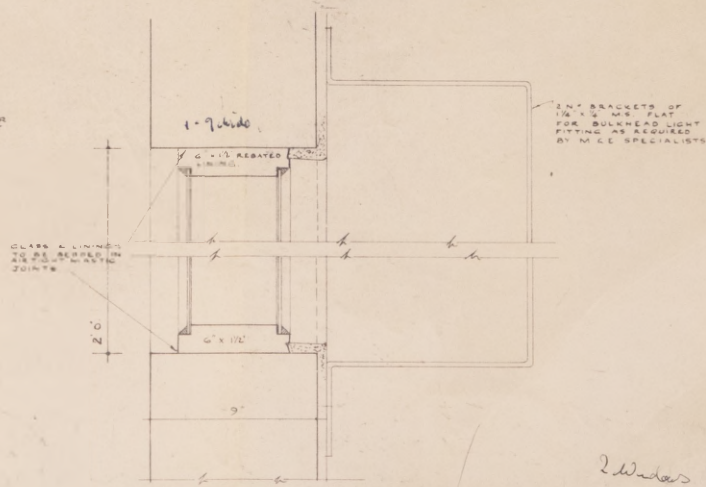
SECTION A - A



SECTION B - B



PLAN



DETAIL OF OPENINGS WITH DOUBLE GLAZING

NOTES

WHERE LAUNCHING TOWERS ARE PROVIDED STEEL POLES FOR FLOODLIGHTING ARE TO BE OMITTED.

THIS DRWG SUPERSEDES DRWG N° - 6325/56

THIS DRAWING IS TO BE READ IN CONJUNCTION WITH DRAWING N° 2127/49, M.C.E. DRWG N° 19218/56 & 642/56

T TYPE

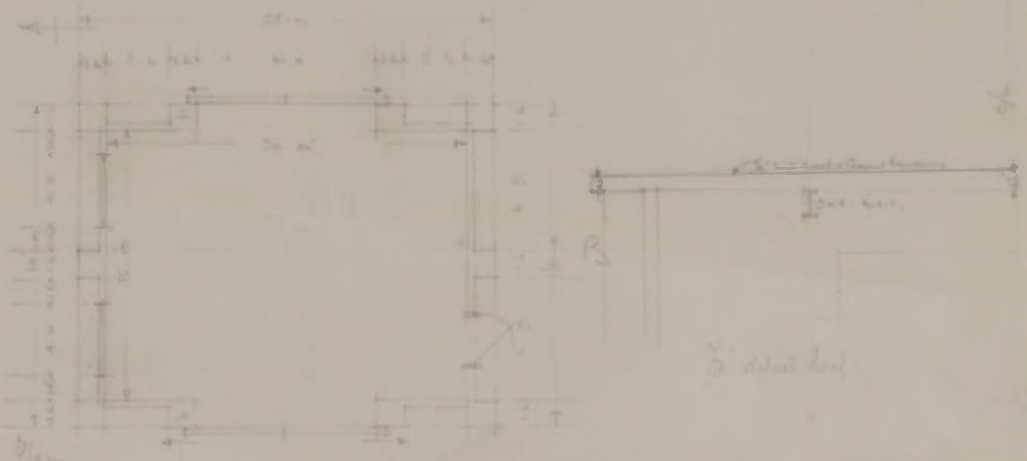
RADAR SONDE
BALLOON FILLING SHED
DEVIATION DRAWING SHOWING
REVISION OF SAFETY LIGHTING
FLOOD LIGHTING & VENTILATION

P. G. Gaulton/MS DATED 29/3/57	JCS/BB DESIGNED 27/3/57 ORCID H. 12 27/3/57	SCALE 1/4" = 1'-0" DIRECTORATE GENERAL OF WORKS
3568 57		AIR MINISTRY
CHECKED BY 29/3/57	SIGNED BY 29/3/57	CHECKED BY 29/3/57

2 Windows as drawing

Proposed Balloon Filling Shed
Metropolitan Office
Stoney Point, Kansas
Scale 4" = 1'

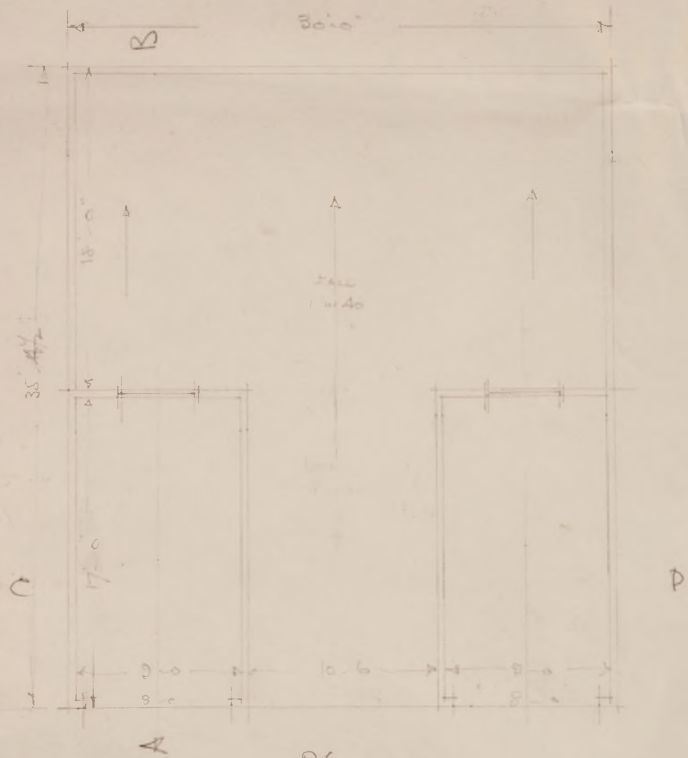
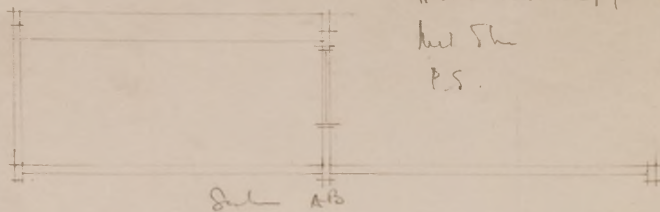
24' x 40'
24' x 40'
24' x 40'
24' x 40'
24' x 40'

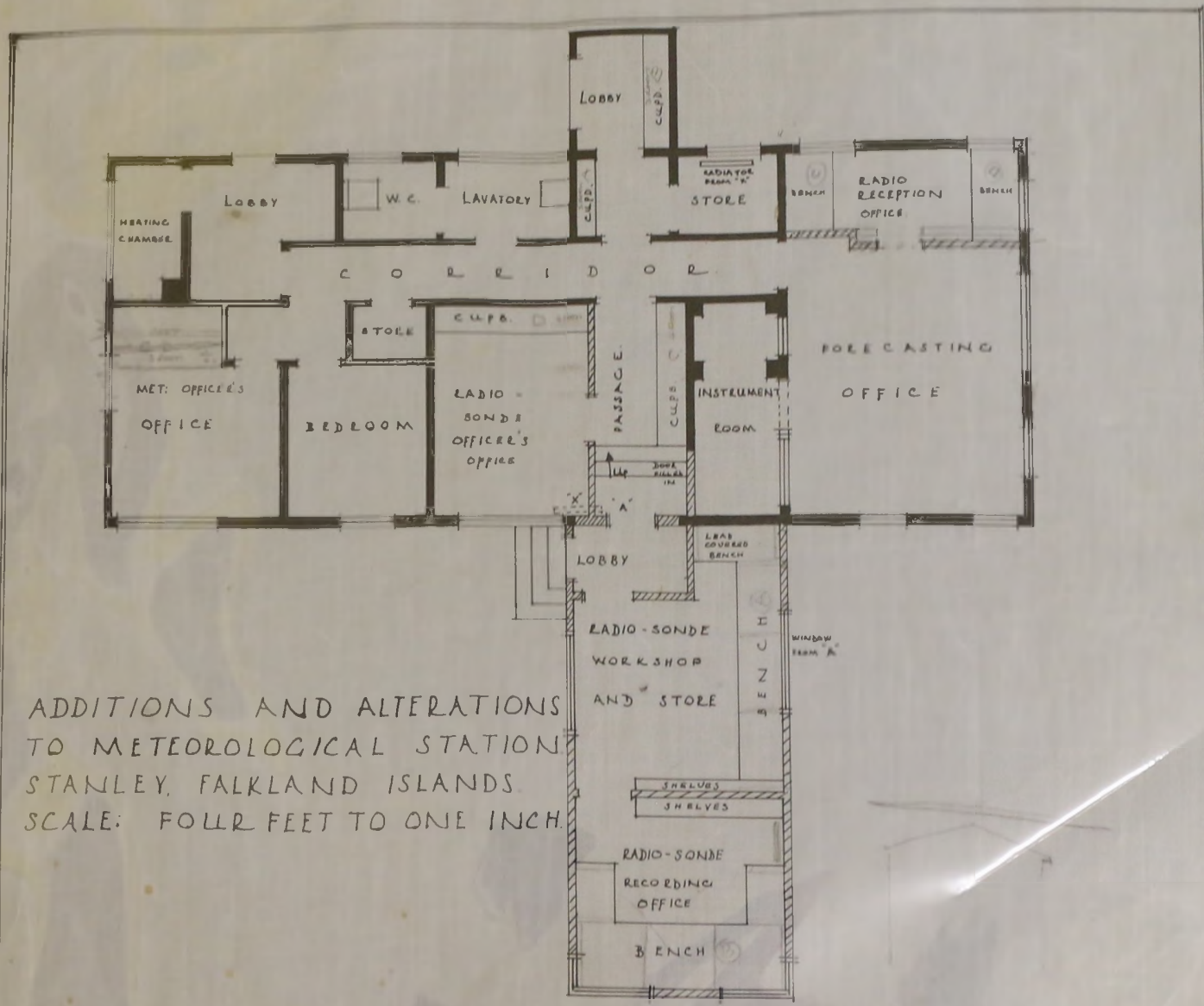


Section A-A

Section B-B

Hard Standing for Radar Van
ket Sh
P.S.

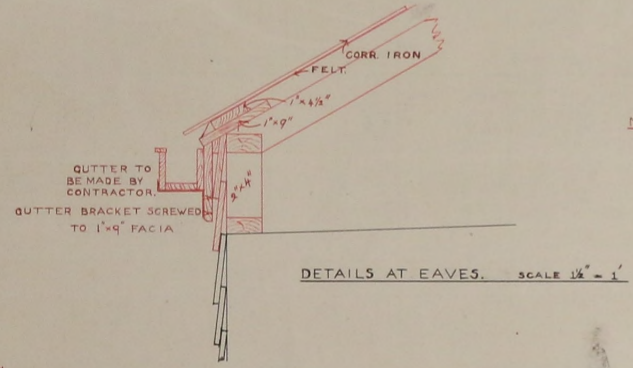
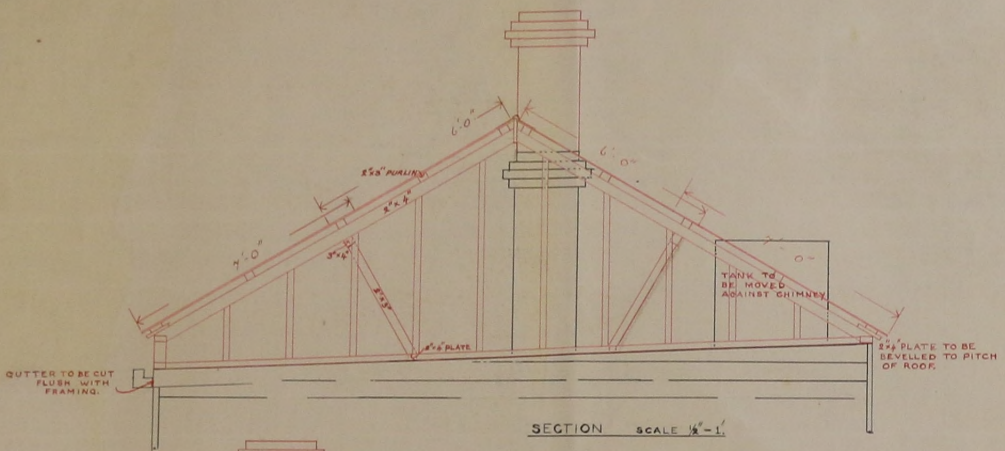




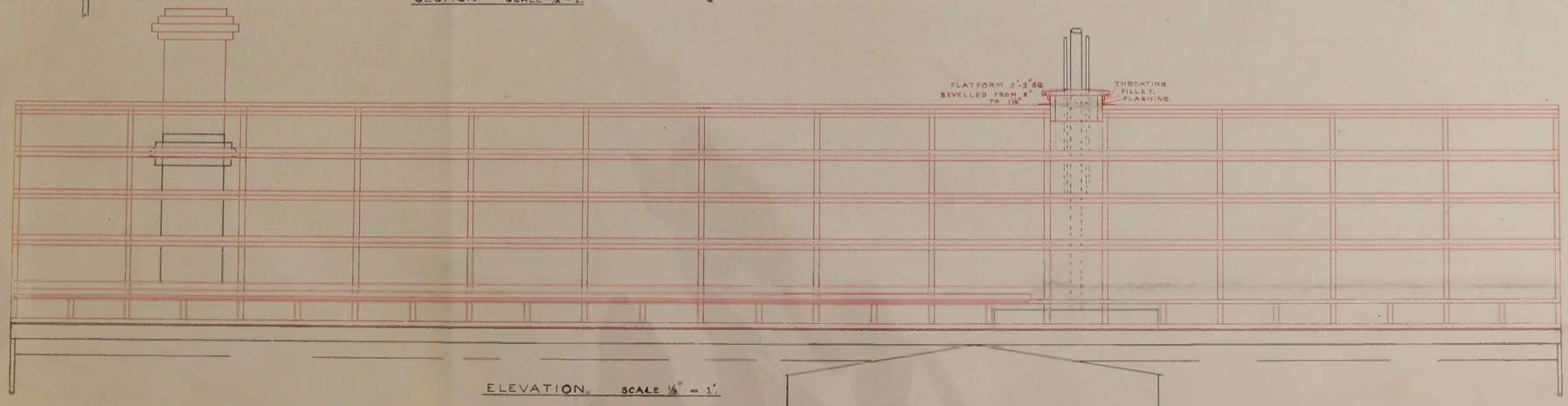
ADDITIONS AND ALTERATIONS
 TO METEOROLOGICAL STATION
 STANLEY, FALKLAND ISLANDS
 SCALE: FOUR FEET TO ONE INCH.

T.S.
 J.H.B.

ASISA
 ARCHITECT ENGINEER.
 F.W.D. STANLEY, F.I.S.
 DECEMBER, 1946.



NOTES -
 All measurements are approx only
 & should be taken from the actual building
 The new work is in RED.
 The existing building is BLACK.



METEOROLOGICAL STATION, STANLEY. ROOF DRGS.

3/7/48