

Drawing No. 89

M.P. 833/22

FAIRY COVE



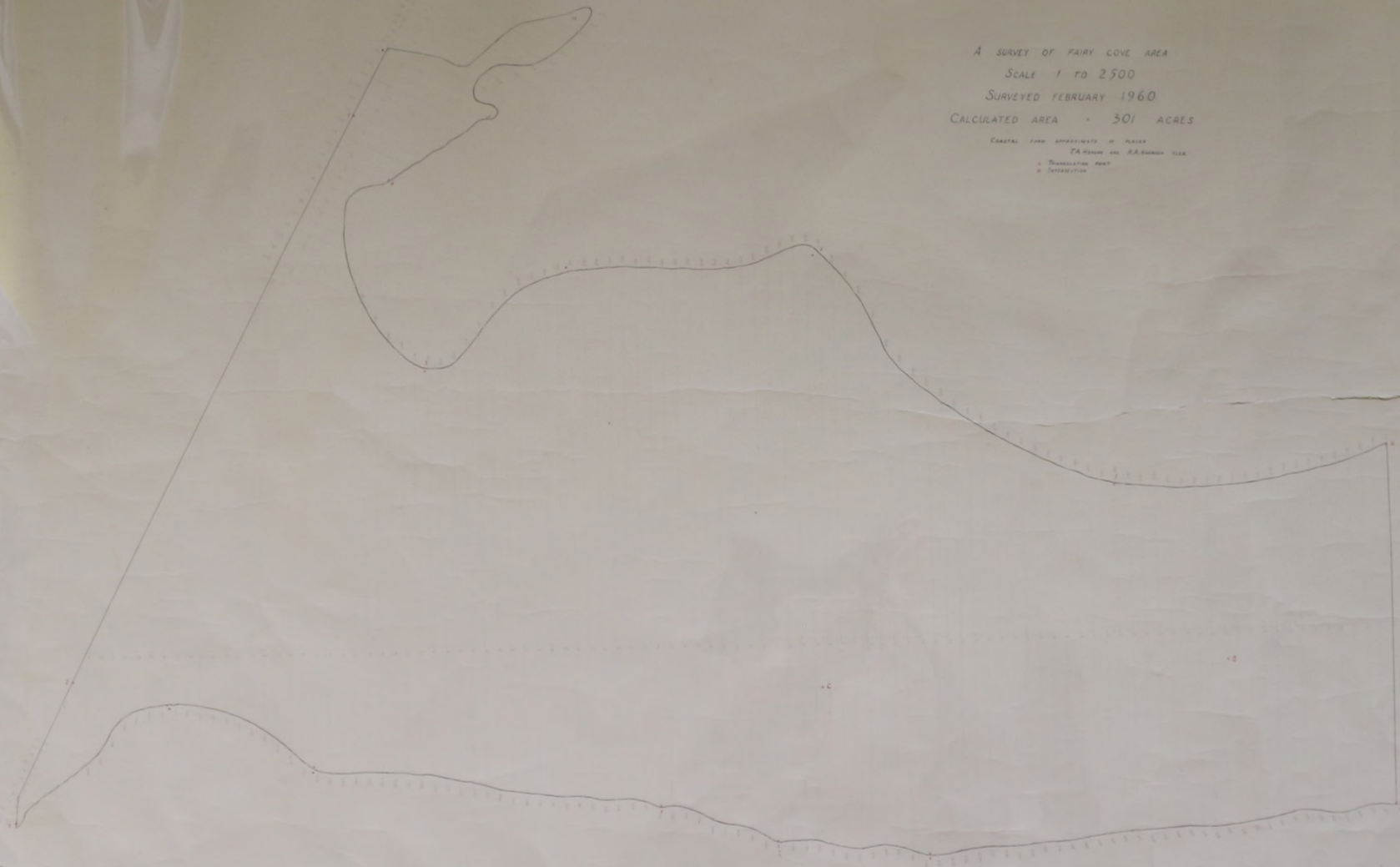
Note: Survey of Land taken from Concrete Block.

Scale: 5" to 1 Chain

R.B. Welch
Col. Engineer.
26/6/24

A SURVEY OF FAIRY COVE AREA
SCALE 1 TO 2500
SURVEYED FEBRUARY 1960
CALCULATED AREA - 301 ACRES

COASTAL FORM APPROXIMATE IN PLACE
FA HOLLOW AND RA BARRELS SIZE
• TRANSLATION POINT
• INTERSECTION



FALKLAND ISLANDS PORT STANLEY

FIRST EDITION

SHEET 2

SCALE 1:25,000



Geographical Section, General Staff, No. 4463
Published by War Office, 1943

All heights reduced to the level of Mean Low Water Springs
U.S. War Department Gingsberg Projection (Southern Hemisphere)
Band V (South) Zone II

Surveyed and Drawn by No. 2 Topographical Section,
148 (Corps Ad. Div.) Coy. Royal Engineers, 1943
Reprojected by S.S. 543

CONVENTIONAL SIGNS	
Sea level	...
Height of land	...
Height of water	...
...	...

All heights in Feet.

Contour Interval 50 feet.

SCALE 1:25,000



Note: The area shown is roughly outlined in black
to become legible when reproduced at smaller scale.

TO USE A MAP REFERENCE
1. Find the grid square in which the place or feature is situated.
2. Read the easting and northing coordinates of the top-left corner of that square.
3. Add the easting and northing coordinates of the place or feature to those of the top-left corner of the square.
4. The result is the grid reference of the place or feature.
Example: A place is situated in the square bounded by 58 00 and 58 02 Easting and 52 00 and 52 02 Northing. The place is situated in the square bounded by 58 00 and 58 02 Easting and 52 00 and 52 02 Northing. The grid reference of the place is 58 00 52 00.

MC3-31-66-0001

SPRINGS & UNIVERSAL - CUTSHEETS - PORT STANLEY - 1943

STANLEY AND ENVIRONS

PURPLE GRID REFERS TO UTM ZONE 21 GRID

FALKLAND ISLANDS 1:25,000



ELEVATIONS IN FEET

SCALE 1:25,000

ELEVATIONS IN FEET

PURPLE GRID REFERS TO UTM ZONE 21 GRID

1:12,500

HEIGHTS IN METRES

STANLEY

PORT WILLIAM

SEABOARD WATER

WINKLEY RIDGE

STANLEY HARBOUR

STANLEY

SOUTH ATLANTIC OCEAN

PORT HARRIET



Map symbols and scale information:

- Scale: 1:12,500
- Scale bar: 0 to 1000 METRES
- Scale bar: 0 to 1000 FEET
- Map symbols for roads, buildings, and other features.
- Legend for symbols.
- Inset map of the region.

HEIGHTS IN METRES

MC3-31-HA-0001

1:12,500

HEIGHTS IN FEET

PORT HARRIET

HEIGHTS IN METRES

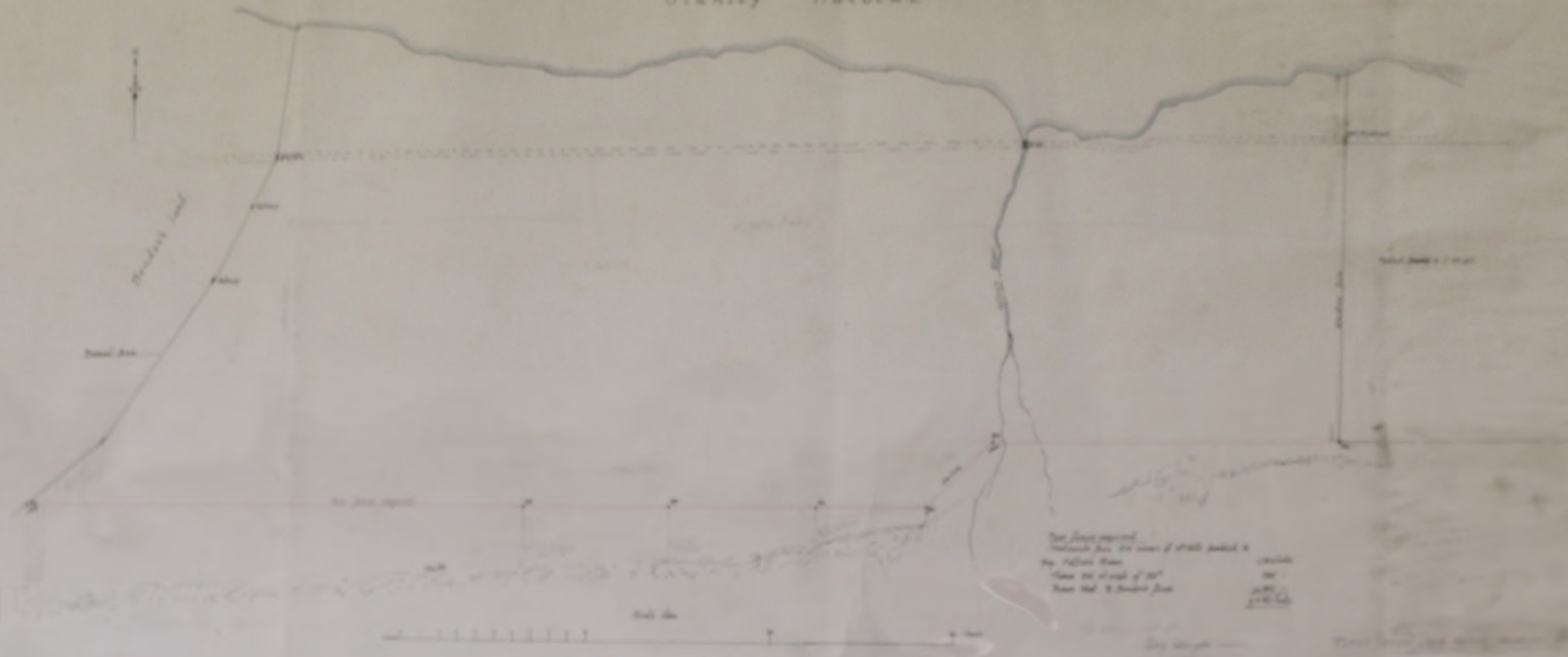
Scale 1:12,500
Sheet No. 422 of Part of K32
Edition 1982



HARRIET - 6565 5456 - 1982

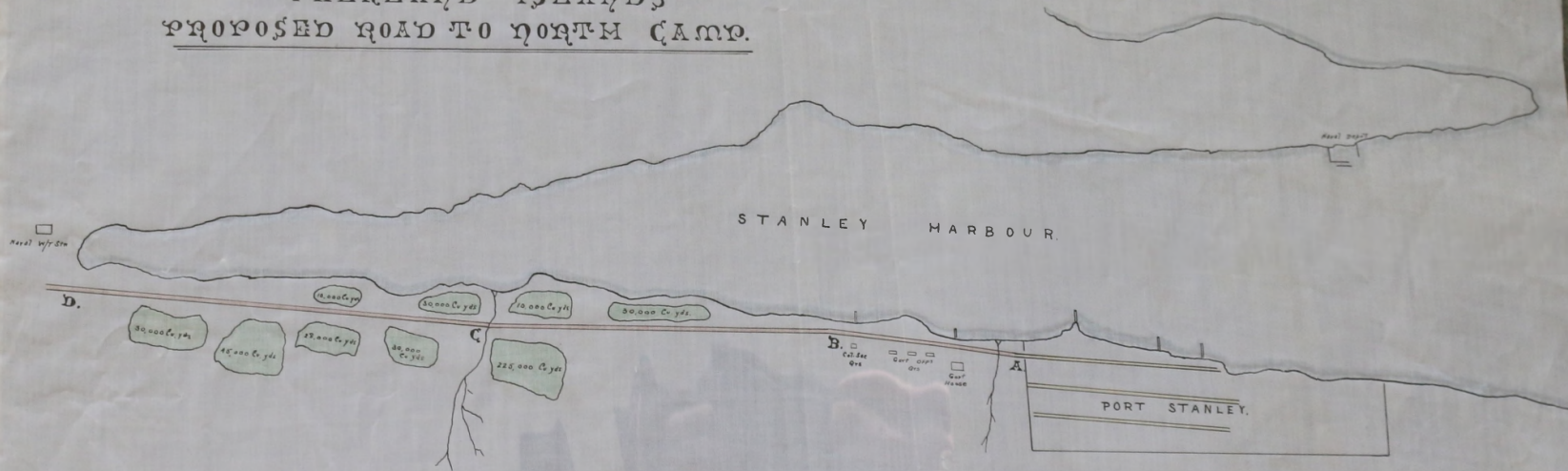
Land, Western Suburbs, proposed to lease to Messrs W Morrison and B Miles.

Stanley Harbour



The above proposed
 ...
 ...
 ...
 ...
 ...

FALKLAND ISLANDS
PROPOSED ROAD TO NORTH CAMP.



- PROPOSED NEW LOUERY ROAD
- NEW PEAT BANKS 358,000 cubic yds.
- SURFACED ROADS

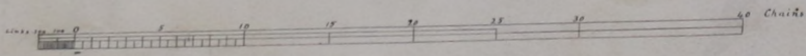
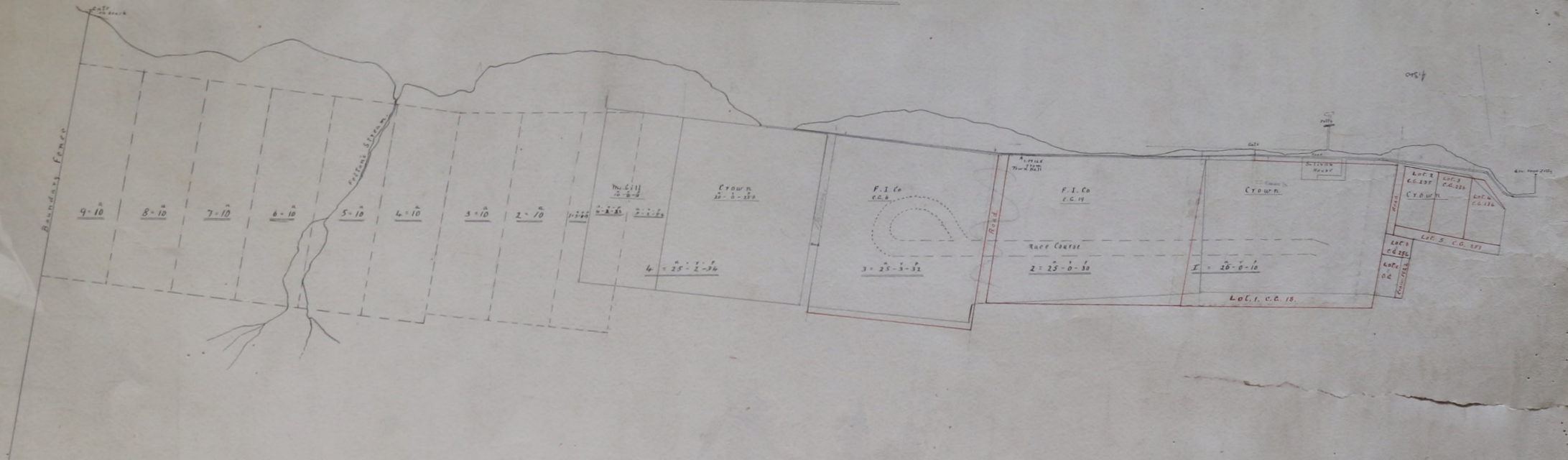
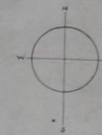
A to C = 2720 yds. run.

C to D = 1,600 yds. run.

Drawing No 69.

WESTERN SUBURBS =

STANLEY HARBOUR



Scale = 4 Chains to One inch

A. M. J. Mack, C.E.
Colonial Engineer
10 July 1925.