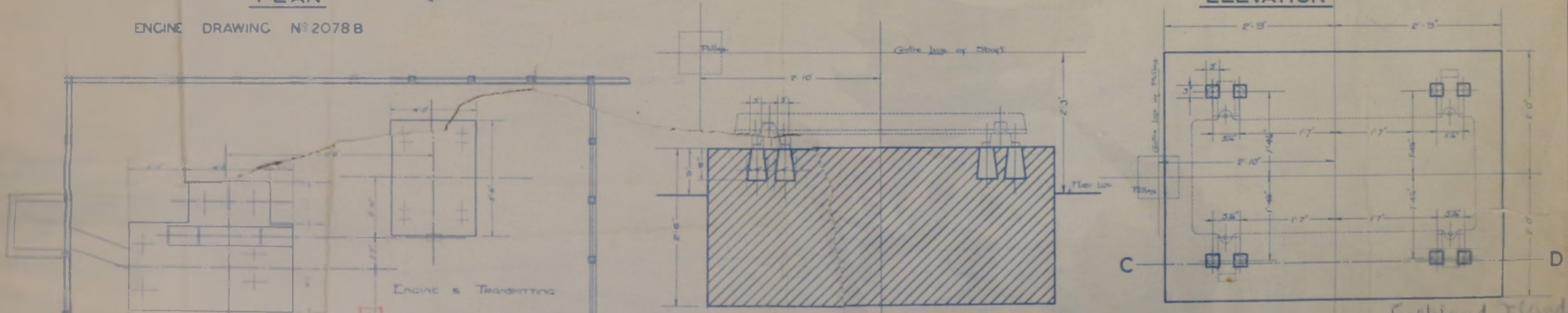


PLAN

SECTION A.B.

ELEVATION

ENGINE DRAWING N° 2078 B



SECTION C.D.

PLAN

GENERATOR DRAWING N° 2095 B

Assemblage of Foundations on the roof of the building

Scale 1/4" = 1 Foot

SCALE 1/8" FULL SIZE

Falkland Islands
796/1

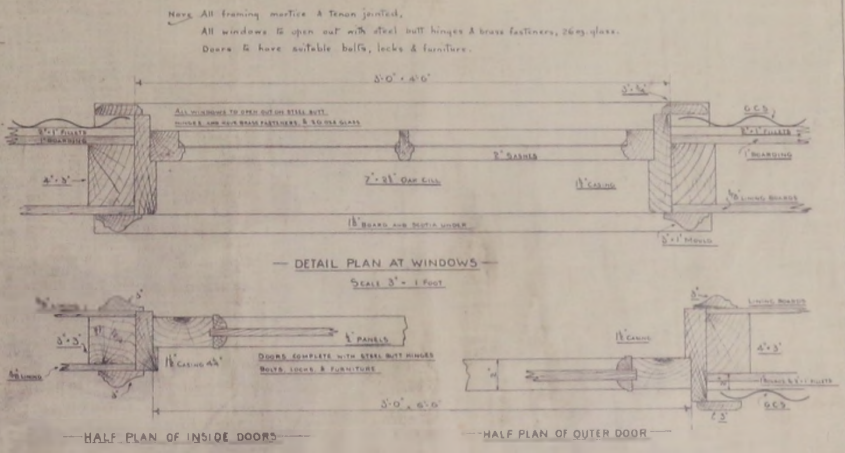
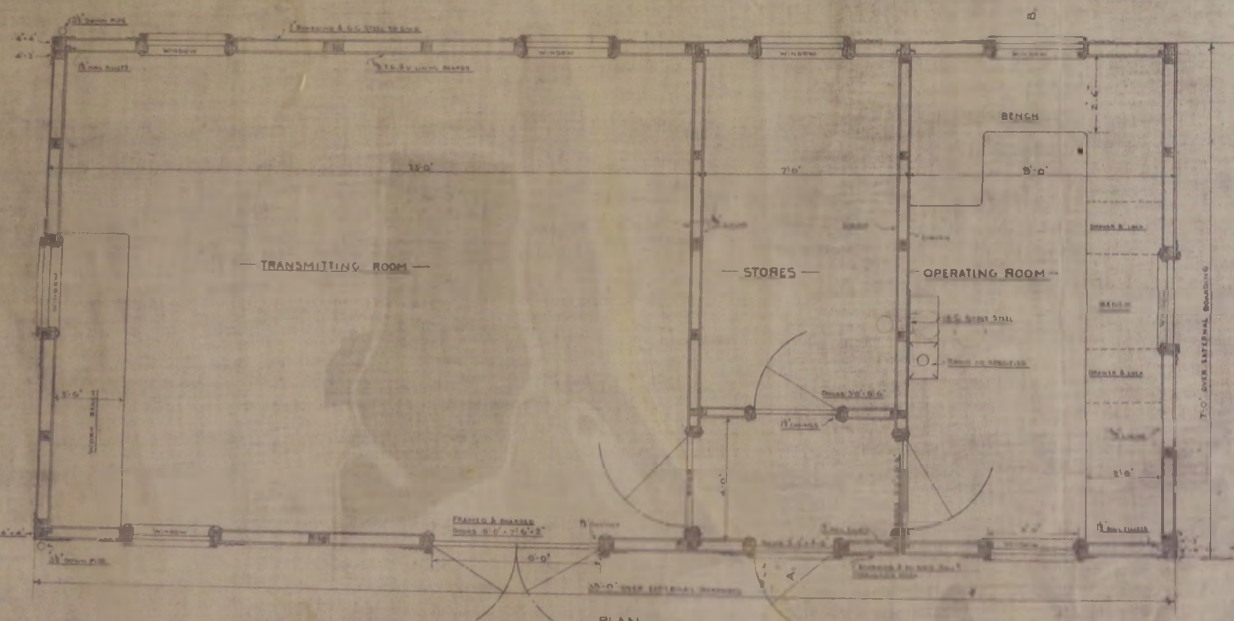
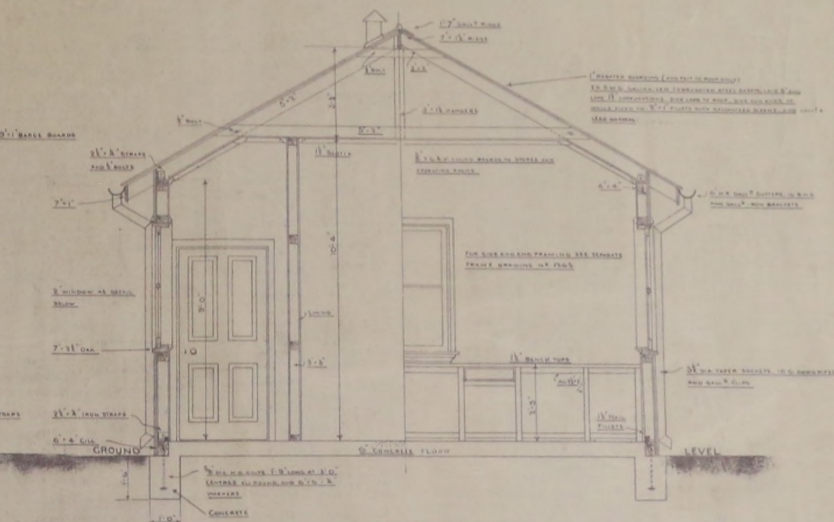
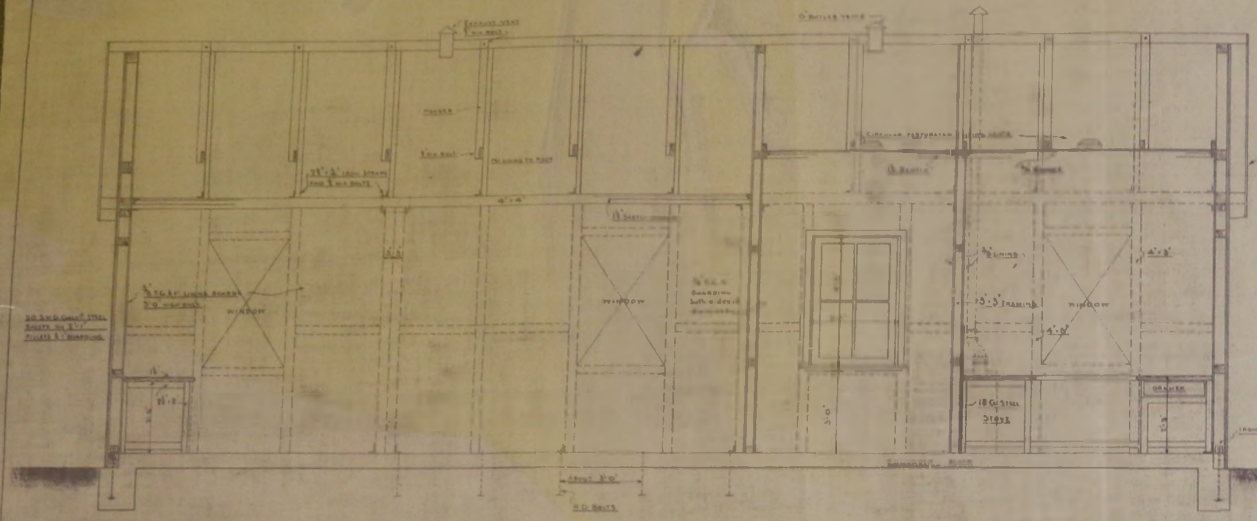
STANLEY
FALKLAND ISLANDS

MARCONI WIRELESS TELEGRAPH STATION
FOUNDATIONS FOR MACHINES.

MARCONI'S WIRELESS TELEGRAPH CO. LTD. LONDON

DRAWN BY ... DATE ...
TRACED BY ... DATE ...
CHECKED BY ... DATE ...

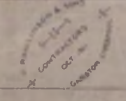
N° 2098



FALKLAND ISLANDS
WIRELESS TELEGRAPH STATION

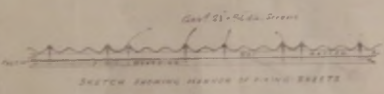
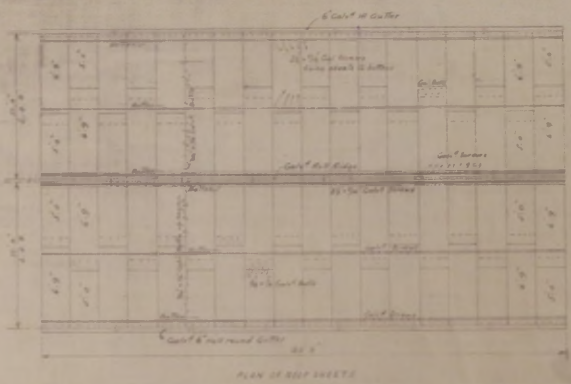
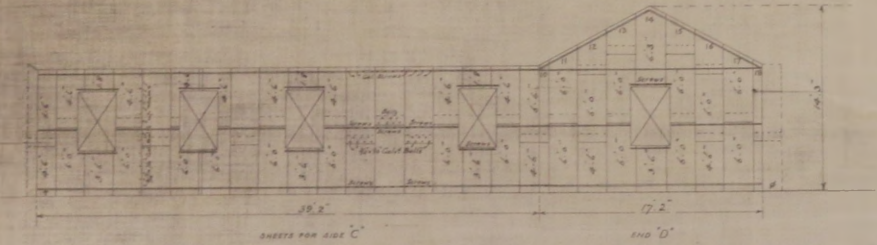
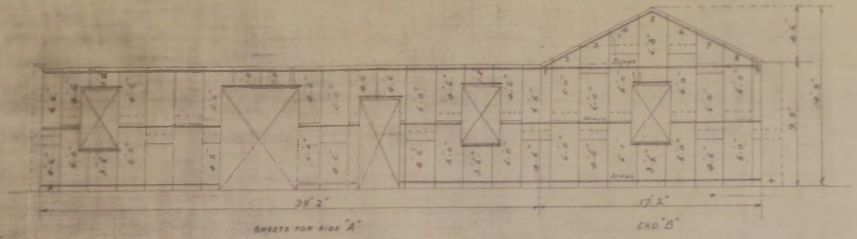
Scale 1/2 Inch to 1 Foot

REQ NO 796/2
DRAWING NO 1264



McDonnell
RESPECTFULLY

SHEET PLAN

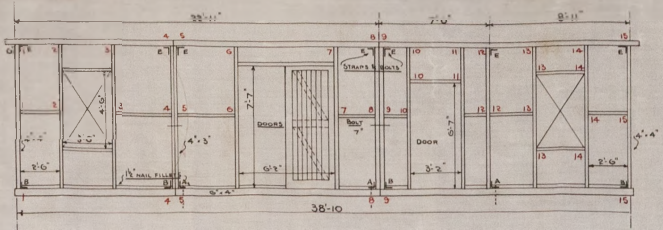


DO NOT LEAVE POINT SHEETS UP'S CORRELATIONS
 LAY WITH 1/2 CORRELATION WITH LAY B'S SHEETS
 THICKER ONE SIDE & PUT IN 2 PLYS
 HULLS FOR SHEETS TO BATTERY PUNCHED AT SITE

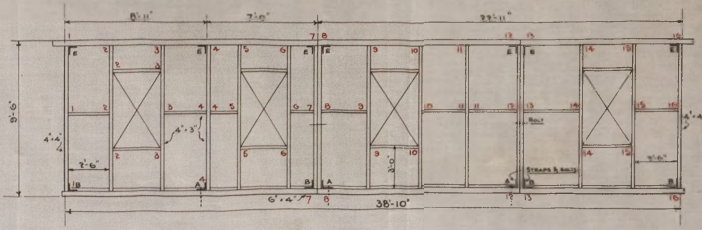
APPROVED
M. G. Gentry
 4/2/14
 DIRECTOR GENERAL

— FALKLAND ISLANDS —
 — WIRELESS TELEGRAPH STATION —

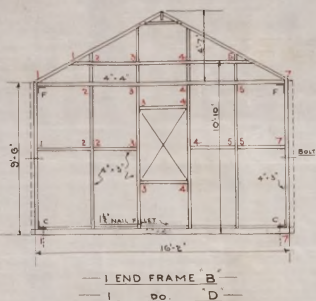
REQ No 796/2
 DRAWING No A785



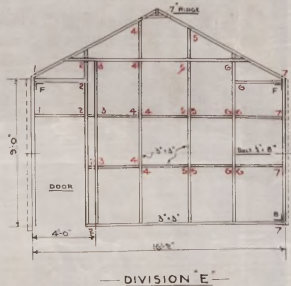
FRONT FRAME MARKED 'A'



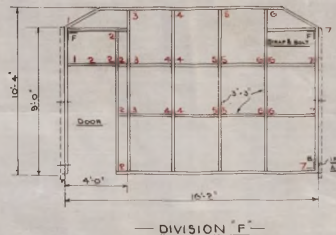
BACK FRAME MARKED 'C'



END FRAME B
DO D



DIVISION 'E'

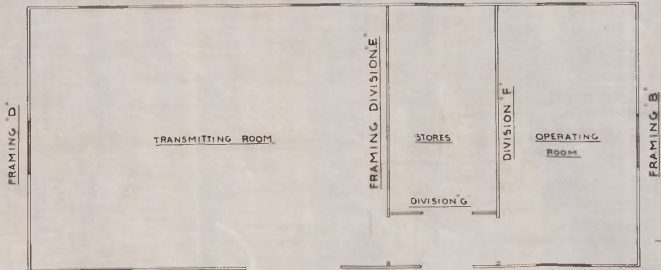


DIVISION 'F'



DIVISION 'G'

BACK FRAMING 'C'



FRONT FRAMING 'A'

KEY PLAN

EACH PIECE OF FRAMING TO BE PAINT MARKED, AND STAMPED WITH ITS FRAME LETTER, AND NUMBERED AS SHOWN.

W. J. ...
RESPECTFULLY

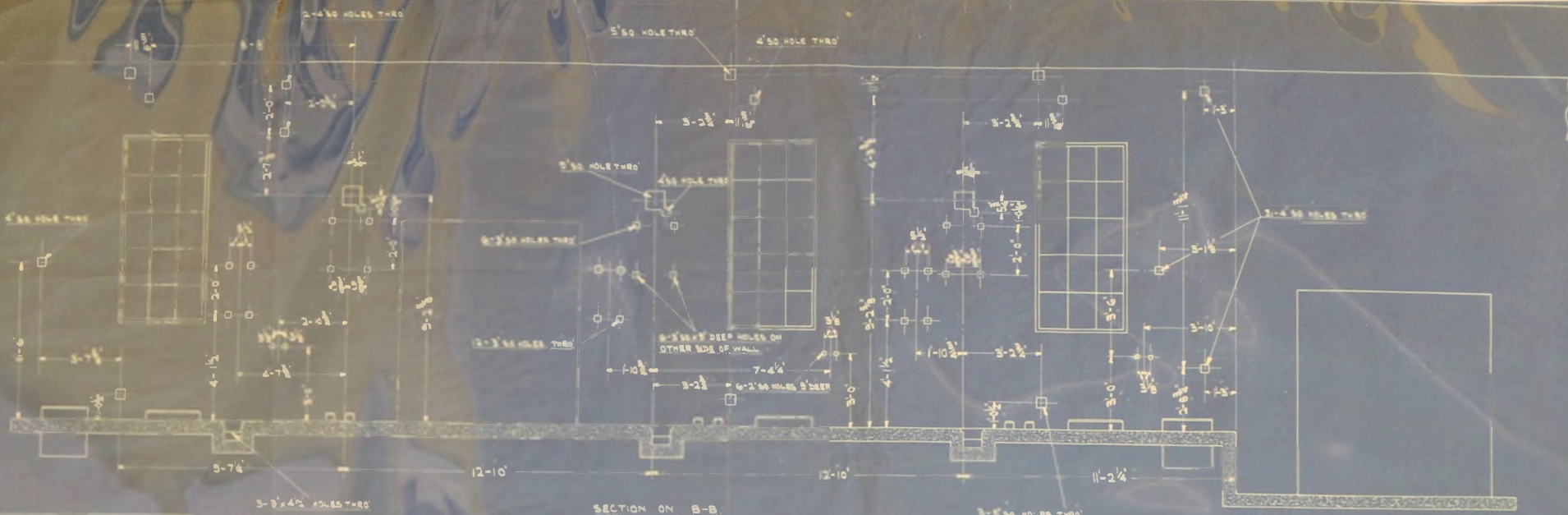
FALKLAND ISLANDS
WIRELESS TELEGRAPH STATION

PREPARED BY
CONTRACTOR
FOR THE
POST OFFICE
DEPARTMENT

SEE DRAFT 1264

REQ NO 796 1/2

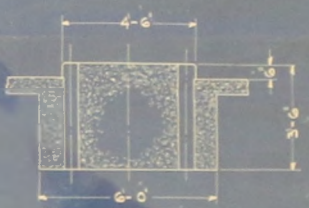
FRAME DRAWING NO 1265



DUO TO THE VARYING NATURE OF SUBSOIL WE CANNOT ACCEPT RESPONSIBILITY FOR FOUNDATIONS. THE DIMENSIONS ON THIS DRAWING APPLY ONLY FOR SOFT DRAINING CONDITIONS. BELOW FLOOR DIMENSIONS ARE A MINIMUM AND SHOULD BE INCREASED WHERE NECESSARY TO SUIT THE SUBSOIL.

NOTE - WHEN THE CONCRETE FOUNDATION IS BEING PREPARED SQUARE REIN. AS SHOWN SHOULD BE LEFT IN FOR FOUNDATION BUILT. FINISHED LEVELS ARE GIVEN AN ALLOWANCE MUST BE MADE FOR LEVELLING & GROUTING UP. PROVISION SHOULD BE MADE FOR DRAINING TRENCHES. CHECKER PLATE NOT SUPPLIED. SUITABLE REBATE AND TRENCH COVERS TO BE PROVIDED BY THE CUSTOMER.

SECTION ON B-B



SECTION ON A-A



SECTION OF TRENCH SHOWING REBATE

COMPILED IN CONJUNCTION WITH ADMIRALTY DRGS 1208/46 4880 & 1208/46

28'-6" ENGINE ROOM



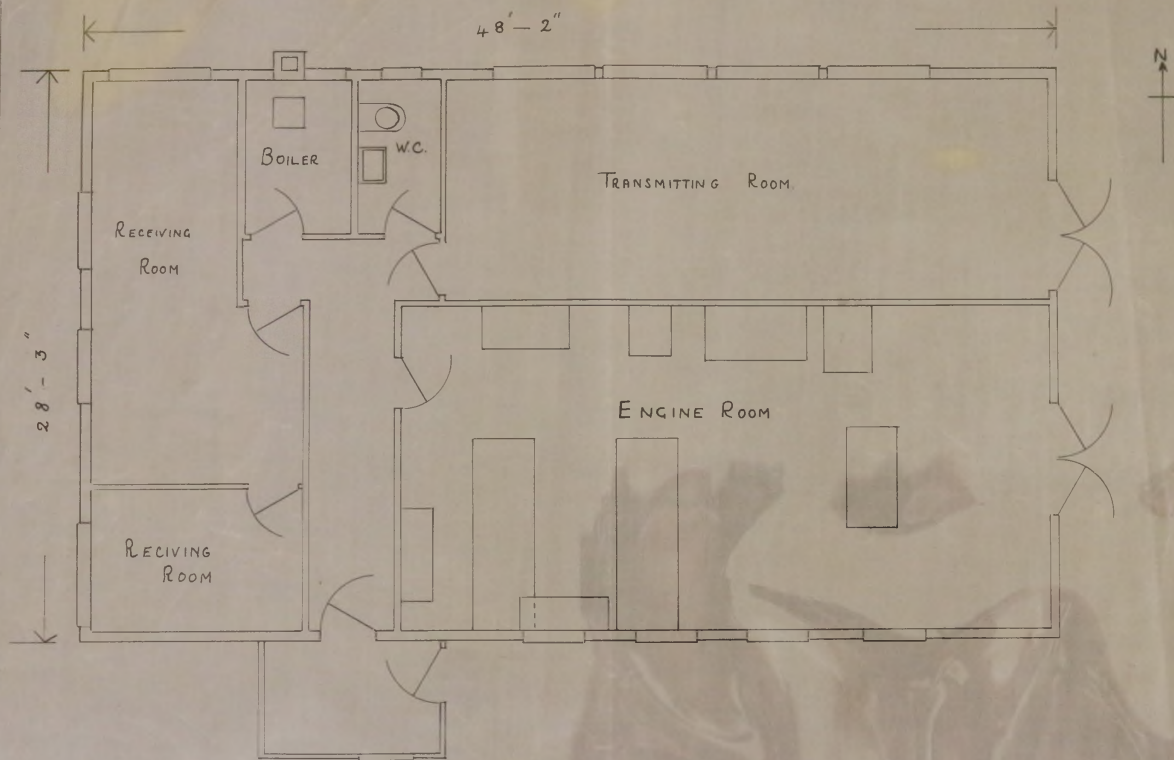
SECTION ON C-C-C-C

W.O.C. 11540-3 2 SHEETS SHEET 2

STATION - BLACKSTONE W/T STATION	BLACKSTONE & CO. LTD
TYPE OF PLANT - ENGINE ROOM ALTERNATOR	3-11-1946
ADMIRALTY CONTROL NO. 12083/46	LAYOUT OF FOUNDATIONS
SCALE - 1/4" = 1'-0"	DATE - 11-11-46
DATE - 11-11-46	DRG. NO. A18854/2
DESIGNED BY - E. GARDNER	CHECKED BY -
DRAWN BY -	APPROVED BY -

W/T STATION - NEW W/T STATION... - 29 MAY 1948

MCI-41-WI-0006



NEW W/T. STATION. PORT STANLEY. FALKLAND ISLANDS.

DRAWN BY: D.L.

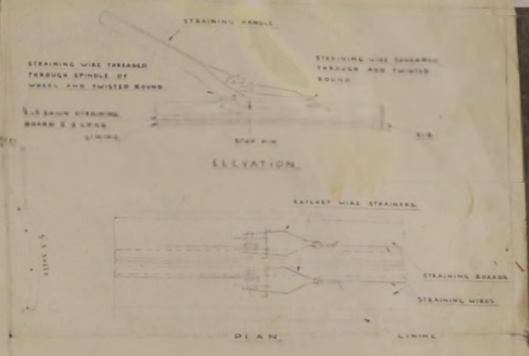
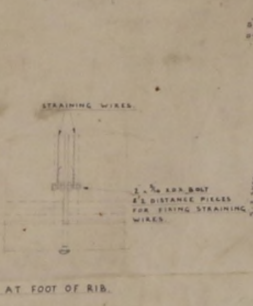
TRACED BY: C.S.

EXECUTIVE ENGINEER *C. J. Bunting*

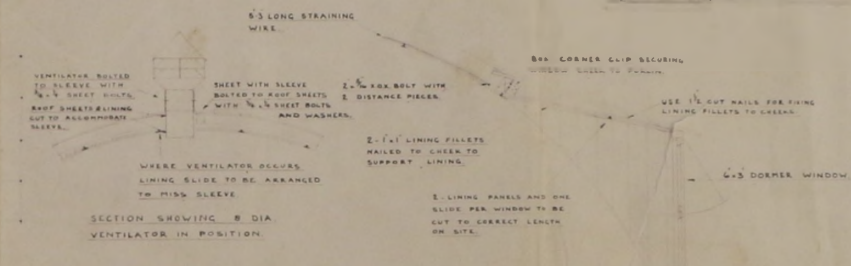
0 4 8 12 16 FEET.

SCALE $\frac{1}{4}'' = 1'$

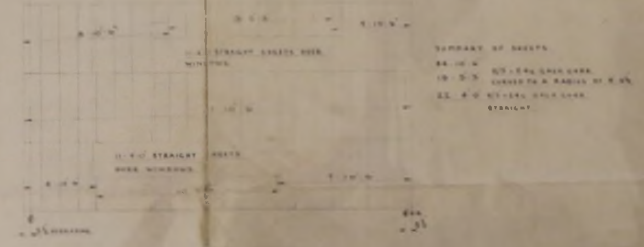
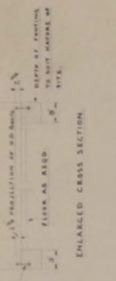
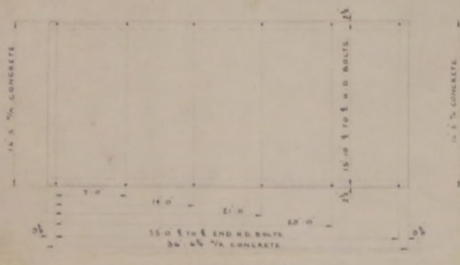
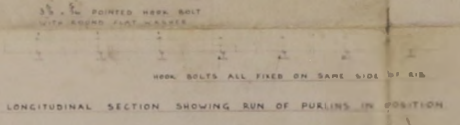
29/5/48



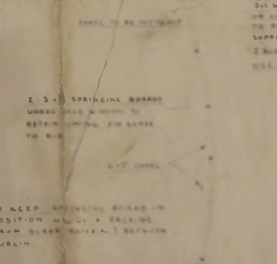
DETAIL OF FIXING STRAINING WIRES AT TOP LINING MUST BE FIXED BEFORE OUTER SHEETING



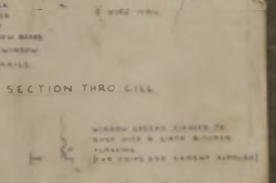
PURLIN PLAN



LONGITUDINAL SECTION SHOWING SIDE LAP IN ROOF SHEETS



SECTION SHOWING LINING DETAILS TO WINDOW



PLAN

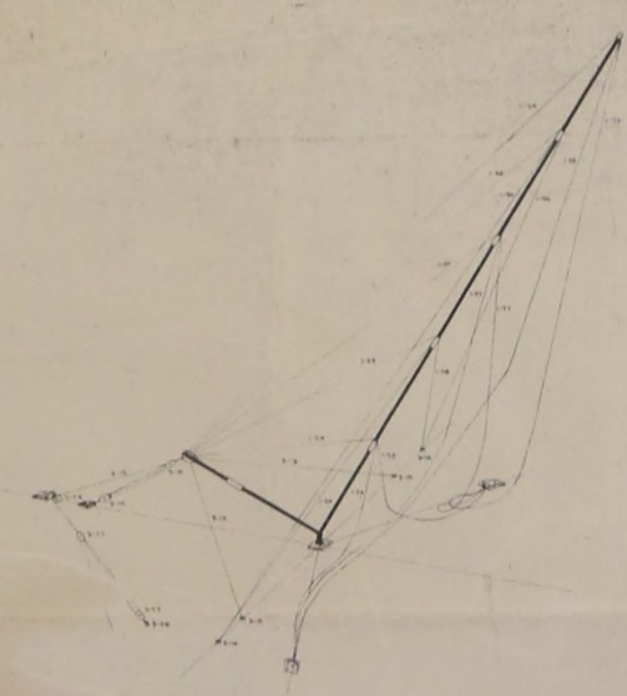
THE CROWN AGENTS
ERECTION DETAILS OF 16' SPAN LINED NISSEN
ROOF - 36' LONG

16' SPAN LINED NISSEN
X1474

MCL-41-W1-0008

WIT STATION - LAYOUT, ERECTION DETAILS OF 100' MAST - RC100 - 20 NOV 1952

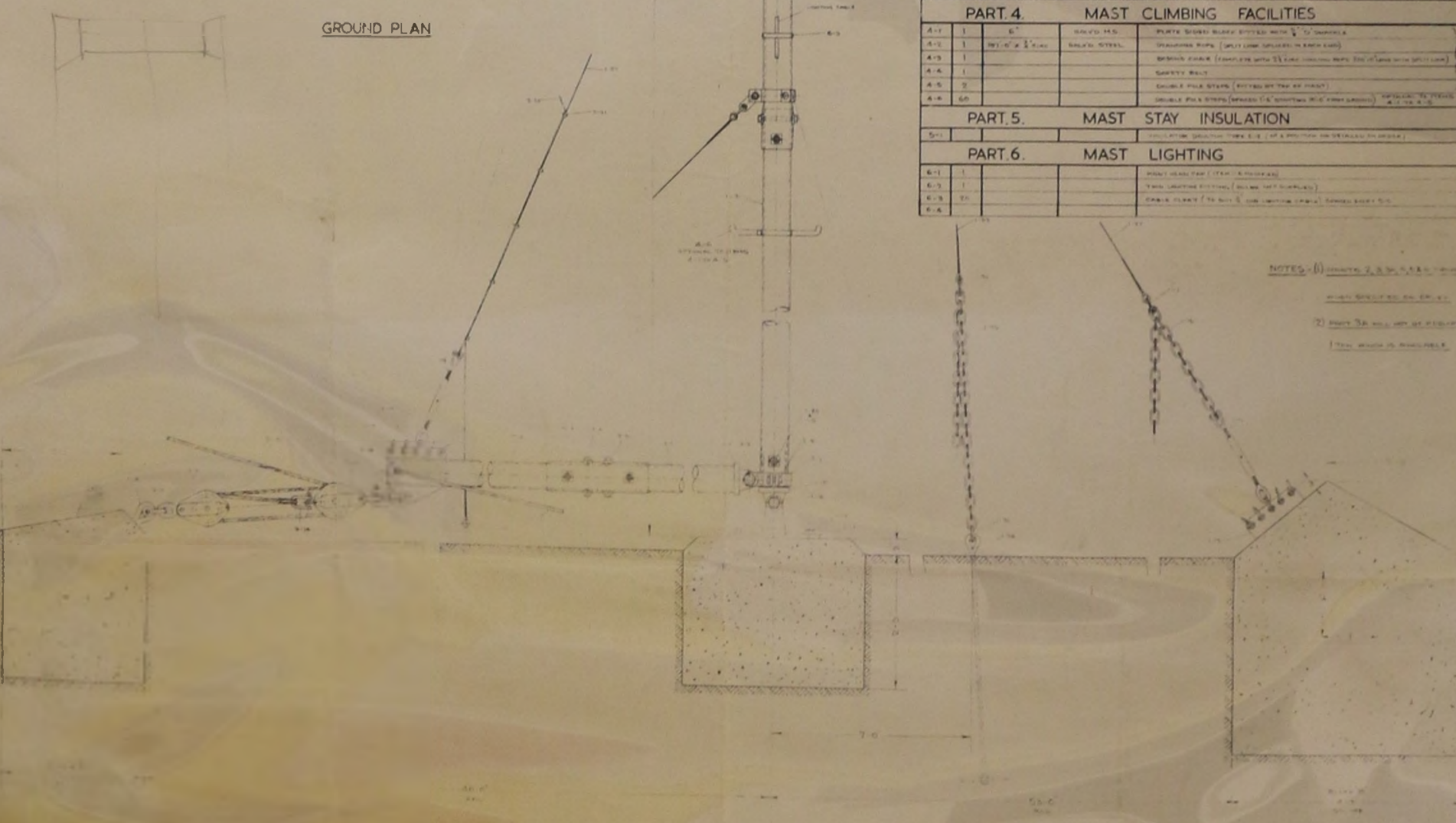
DRG. NO. R.C.100.



ERECTION DETAILS



GROUND PLAN



LAYOUT & ERECTION DETAILS OF 100'-0" MAST

PART 1.		FITTINGS FOR MAST & HALYARD			QTY
ITEM	QTY	DESCRIPTION	UNIT	DESCRIPTION	QTY
1.1	1	30" x 3/4"	STEEL	7 GALV. WIRE BRACKET (TOP)	100
1.2	2	30" x 3/4"	STEEL	1 GALV. WIRE BRACKET (INTERMEDIATE)	200
1.3	1	18" x 3/4"	STEEL	1 GALV. WIRE BRACKET (BOTTOM)	100
1.4	8	7/8" x 3/4"	STEEL	8 GALV. WIRE BRACKET (FOR MAST STAYS)	800
1.5	18	3/4"	STEEL	18 GALV. WIRE BRACKET (FOR MAST STAYS)	1800
1.6	1	3/4"	STEEL	1 GALV. WIRE BRACKET (FOR MAST STAYS)	100
1.7	4	3/4"	STEEL	4 GALV. WIRE BRACKET (FOR MAST STAYS)	400
1.8	16	3/4"	STEEL	16 GALV. WIRE BRACKET (FOR MAST STAYS)	1600
1.9	15	3/4"	STEEL	15 GALV. WIRE BRACKET (FOR MAST STAYS)	1500
1.10	1	3/4"	STEEL	1 GALV. WIRE BRACKET (FOR MAST STAYS)	100
1.11	1	3/4"	STEEL	1 GALV. WIRE BRACKET (FOR MAST STAYS)	100
1.12	4	3/4"	STEEL	4 GALV. WIRE BRACKET (FOR MAST STAYS)	400
1.13	3	3/4"	STEEL	3 GALV. WIRE BRACKET (FOR MAST STAYS)	300
1.14	1	3/4"	STEEL	1 GALV. WIRE BRACKET (FOR MAST STAYS)	100
1.15	10	3/4"	STEEL	10 GALV. WIRE BRACKET (FOR MAST STAYS)	1000
1.16	1	3/4"	STEEL	1 GALV. WIRE BRACKET (FOR MAST STAYS)	100
1.17	1	3/4"	STEEL	1 GALV. WIRE BRACKET (FOR MAST STAYS)	100
1.18	3	3/4"	STEEL	3 GALV. WIRE BRACKET (FOR MAST STAYS)	300
1.19	15	3/4"	STEEL	15 GALV. WIRE BRACKET (FOR MAST STAYS)	1500
1.20	1	7/8" x 3/4"	STEEL	1 GALV. WIRE BRACKET (FOR MAST STAYS)	100
1.21					
1.22					
1.23					
1.24					
1.25					
1.26					
1.27					
1.28					
1.29					
1.30					
1.31					
1.32					
1.33					
1.34					
1.35					
1.36					
1.37					
1.38					
1.39					
1.40					
1.41					
1.42					
1.43					
1.44					
1.45					
1.46					
1.47					
1.48					
1.49					
1.50					

PART 2.		FITTINGS FOR EXTRA HALYARD HEIGHT H FEET			QTY
ITEM	QTY	DESCRIPTION	UNIT	DESCRIPTION	QTY
2.1	1	3/4"	STEEL	1 GALV. WIRE BRACKET	100
2.2	1	3/4"	STEEL	1 GALV. WIRE BRACKET	100
2.3	2	3/4"	STEEL	2 GALV. WIRE BRACKET	200
2.4	1	3/4"	STEEL	1 GALV. WIRE BRACKET	100
2.5	1	3/4"	STEEL	1 GALV. WIRE BRACKET	100
2.6	3	3/4"	STEEL	3 GALV. WIRE BRACKET	300
2.7	1	3/4"	STEEL	1 GALV. WIRE BRACKET	100
2.8	1	3/4"	STEEL	1 GALV. WIRE BRACKET	100
2.9	1	3/4"	STEEL	1 GALV. WIRE BRACKET	100
2.10					
2.11					
2.12					
2.13					
2.14					
2.15					
2.16					
2.17					
2.18					
2.19					
2.20					
2.21					
2.22					
2.23					
2.24					
2.25					
2.26					
2.27					
2.28					
2.29					
2.30					

PART 3.		ERECTION EQUIPMENT (PER SITE)			QTY
ITEM	QTY	DESCRIPTION	UNIT	DESCRIPTION	QTY
3.1	1	18" x 3/4"	STEEL	1 GALV. WIRE BRACKET	100
3.2	1	18" x 3/4"	STEEL	1 GALV. WIRE BRACKET (WITH REINFORCED HEAD)	100
3.3	1	18" x 3/4"	STEEL	1 GALV. WIRE BRACKET	100
3.4	4	7/8" x 3/4"	STEEL	4 GALV. WIRE BRACKET (FOR MAST STAYS)	400
3.5	8	3/4"	STEEL	8 GALV. WIRE BRACKET (FOR MAST STAYS)	800
3.6	1	3/4"	STEEL	1 GALV. WIRE BRACKET (FOR MAST STAYS)	100
3.7	1	3/4"	STEEL	1 GALV. WIRE BRACKET (FOR MAST STAYS)	100
3.8	5	3/4"	STEEL	5 GALV. WIRE BRACKET (FOR MAST STAYS)	500
3.9	1	3/4"	STEEL	1 GALV. WIRE BRACKET (FOR MAST STAYS)	100
3.10	3	3/4"	STEEL	3 GALV. WIRE BRACKET (FOR MAST STAYS)	300
3.11	1	3/4"	STEEL	1 GALV. WIRE BRACKET (FOR MAST STAYS)	100
3.12	5	3/4"	STEEL	5 GALV. WIRE BRACKET (FOR MAST STAYS)	500
3.13	2	3/4"	STEEL	2 GALV. WIRE BRACKET (FOR MAST STAYS)	200
3.14	2	3/4"	STEEL	2 GALV. WIRE BRACKET (FOR MAST STAYS)	200
3.15	5	3/4"	STEEL	5 GALV. WIRE BRACKET (FOR MAST STAYS)	500
3.16	50	3/4"	STEEL	50 GALV. WIRE BRACKET (FOR MAST STAYS)	5000
3.17					
3.18					
3.19					
3.20					
3.21					
3.22					
3.23					
3.24					
3.25					
3.26					
3.27					
3.28					
3.29					
3.30					

PART 3A.		FITTINGS FOR ADDITIONAL FALL			QTY
ITEM	QTY	DESCRIPTION	UNIT	DESCRIPTION	QTY
3.31	2	3/4"	STEEL	2 GALV. WIRE BRACKET	200
3.32	1	4" x 3/4"	STEEL	1 GALV. WIRE BRACKET	100
3.33	2	3/4"	STEEL	2 GALV. WIRE BRACKET	200
3.34	1	3/4"	STEEL	1 GALV. WIRE BRACKET	100
3.35	1	3/4"	STEEL	1 GALV. WIRE BRACKET	100
3.36	1	3/4"	STEEL	1 GALV. WIRE BRACKET	100
3.37	1	3/4"	STEEL	1 GALV. WIRE BRACKET	100
3.38	1	3/4"	STEEL	1 GALV. WIRE BRACKET	100
3.39	1	3/4"	STEEL	1 GALV. WIRE BRACKET	100

PART 4.		MAST CLIMBING FACILITIES			QTY
ITEM	QTY	DESCRIPTION	UNIT	DESCRIPTION	QTY
4.1	1	6"	STEEL	1 GALV. WIRE BRACKET (FOR MAST STAYS)	100
4.2	1	18" x 3/4"	STEEL	1 GALV. WIRE BRACKET (FOR MAST STAYS)	100
4.3	1				
4.4	1				
4.5	2				
4.6	2				

PART 5.		MAST STAY INSULATION			QTY
ITEM	QTY	DESCRIPTION	UNIT	DESCRIPTION	QTY
5.1					
5.2					
5.3					
5.4					

PART 6.		MAST LIGHTING			QTY
ITEM	QTY	DESCRIPTION	UNIT	DESCRIPTION	QTY
6.1	1				
6.2	1				
6.3	20				
6.4					

NOTES: (1) QUANTITIES 2, 3, 3A, 4, 5, 6, 7, 8, 9, 10, 11, 12, 13, 14, 15, 16, 17, 18, 19, 20, 21, 22, 23, 24, 25, 26, 27, 28, 29, 30, 31, 32, 33, 34, 35, 36, 37, 38, 39, 40, 41, 42, 43, 44, 45, 46, 47, 48, 49, 50, 51, 52, 53, 54, 55, 56, 57, 58, 59, 60, 61, 62, 63, 64, 65, 66, 67, 68, 69, 70, 71, 72, 73, 74, 75, 76, 77, 78, 79, 80, 81, 82, 83, 84, 85, 86, 87, 88, 89, 90, 91, 92, 93, 94, 95, 96, 97, 98, 99, 100.

