

4-10 ROSS ROAD; POLICE COTTAGES

The Stone Cottages or, as they are now known, Police Cottages were originally a row of eight stone-built semi-detached cottages. Initially they were intended to house part of the Falkland Island Garrison and in the Blue Book for 1862 are described as “*Stone cottages to be used as Barracks for the Men of the Falkland Islands Garrison Company.*” In January 1864 the FI Garrison were replaced by a Marine Detachment which remained until the establishment of a civilian police force in 1878. The cottages were then allocated for police occupation and became known as “Constables Row”.

Construction of the Stone Cottages commenced in 1861 with the final work being completed in 1867.

TIMELINE OF CONSTRUCTION

NB: Unless stated otherwise all the artisans in 1864 were Marine workmen.

24 September 1860:

Despatch No 45 from Governor T E L Moore

...it would be very desirable to build a permanent row of at least 10 cottages in which to lodge some of the families now inhabiting hired cottages and the barracks...if built of stone, they would not require the constant repairs which are necessary to the wooden buildings.

10 December 1860:

Despatch 72 from the Duke of Newcastle approves the proposed construction of cottages for the use of the Garrison.

30 April 1861:

A requisition is sent to the Duke of Newcastle from Governor Moore for:

15 tons of good stone lime packed in barrels or casks

24 windows framed & glazed according to pattern A

24 windows framed & glazed according to pattern B

24 outside cottage doors, ledge

24 inside cottage doors, ledge with iron hinges not in frame

48 stock iron rim locks for these doors

12 dozen panes of Crown glass 8" x 10" to repair above windows from time to time and two cwt of putty

3 cwt of red paint for iron work mixed

1 cwt of blue paint

120 yards of brussels carpet (to suit light blue paper & furniture) price not to exceed 4s6d a yard, with hearth rug (large size) and some needles & thread for making

24 firmer chisels 6 ¼ inch & 6 ¾ inch, 6 1 inch & 6 1½ inch

1 carpenter's brace & set of bits

Note. The doors & windows should be made plain & strong suitable for soldiers' cottages—Manning of High Holborn has supplied such articles before [B11; 400, 401]

10 August 1861:

Letter 182 to Captain Molony, FI Garrison:

I am anxious to commence the Work for the cottages of the Garrison as early as possible to avoid interfering with the men cutting peat & planting their gardens. I could therefore request that a party of 6 men should be employed daily under the superintendence of the Surveyor general, commencing on Monday next... [D10; 128]

POLICE COTTAGES

VERSION: 25 September 2017

November 1864:

Mon 14th 4 masons Nos 1 & 2 cottages

Wed 16th 3 carpenters in shop preparing lining for No 1 & 2 cottages

Fri 18th 3 masons ½ days at No 1 & 2 cottages

General: Masons breaking a doorway through No 1 & 2 cottages. 3 masons 1/2 day plastering No 1 & 2 cottages

Mon 21st Three masons excavating behind cottages

Tue 22nd Blacksmith making brackets for shoots

Thu 24th Two masons cottages

Fri 25th Mason paving footpath behind stone cottages

Sat 26th Mason ½ at footpath ½ opening barrel of lime

General: Masons employed excavating the clay and wheeling it from behind stone cottages, Making a drain & paving footpath. Blacksmith making brackets for shoots round stone cottages.

December 1864:

Thu 1st 3 masons ½ day mixing mortar & clay for cottages ½ day wheeling stone off jetty

Fri 2nd 3 masons mixing mortar & clay for cottages

Sat 3rd 3 masons mixing clay for cottages & clearing stone from jetty. 1 carpenter preparing lining boards for No 1 cottage

General: Stone cottages: clay and mortar has been mixed and building stone removed from jetty preparatory to building

Tue 6th 3 1/4 masons mixing clay for cottages. Carpenter ¾ day No 1 cottage

Wed 7th 2 masons mixing hair mortar for cottages. Carpenter ¾ day No 1 cottage

Thu 8th 3 plastering No 6 cottage. 1 carpenter a partition No 1 cottage

Fri 9th 2 plastering No 6 cottage. 1 No 1 cottage.

Sat 10th 1 carpenter No 1 cottage

General: Masons have been employed mixing mortar for & plastering No 6 cottage. Carpenters have finished partition in No 1 and put up the under paper in front room.

Mon 12th 4 masons plastering No 6 cottage. 1 civil workman papering No 1 cottage

Tue 13th 2 blacksmith, 1 mason mixing hair mortar. 1 carpenter painting No 1 cottage. 1 civil workman papering No 1 cottage

Wed 14th 1 carpenter painting No 1 cottage. 1 civil workman No 1 cottage

Thu 15th 2 masons plastering No 5 cottage. 1 carpenter painting No 1 cottage. 1 carpenter making paint for plastering. 1 civil workman ¾ day No 1 cottage

Fri 16th 3 masons plastering No 5 cottage. 1 civil workman ¼ day No 2 cottage

Sat 17th 1 mason & 1 blacksmith ½ day plastering No 5 cottage. 1 blacksmith ½ day painting No 2 cottage

General: Masons employed plastering No 6 cottage—1st coat. No 5 2nd coat. No 1 cottage front room finished papering and first coat of paint. No 2 cottage commenced papering & painting

Mon 19th Two masons plastering No 5 cottage. One civil worker ¾ a day No 2 cottage

Tue 20th One mason plastering No 5 cottage. One mason sundry jobs No 1 & No 2 cottages. One civil worker No 2 cottage

Wed 21st One carpenter ¾ day painting No 2 cottage. One civil worker papering No 2 cottage

Thu 22nd Three painting No 2 Cottage; one plastering No 5. One civil worker painting No 2 cottage

Fri 23rd Two & ½ workmen painting No 1 & 2 cottages. One civil workman painting No 1 & 2 cottages

Sat 24th One workman painting No 1 cottage. One civil workman painting No 1 cottage

General: Works on No 1 & No 2 cottages complete except for fixing of mantelpieces.

28th 3 masons plastering No 5 Cottage; one carpenter making building wall. One civil workman preparing partition beams for No 7 & 8 cottages

[H21]

1867: Works finished. The total cost was £1,617-1-9 $\frac{3}{4}$.

In 1907 peat sheds were erected to the rear of the cottages. [FIM Dec 1907]

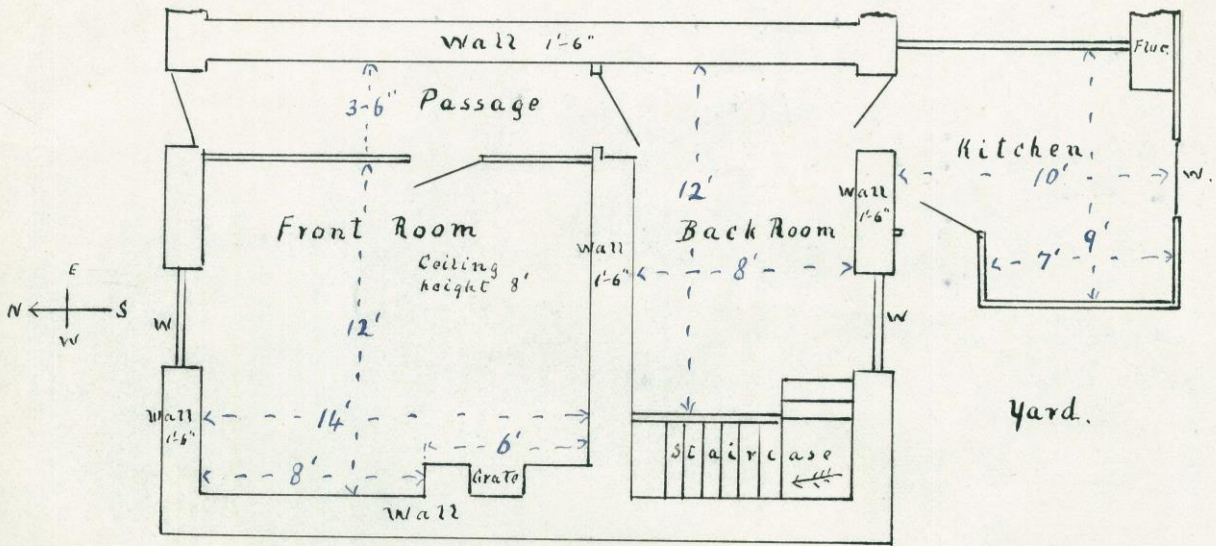
In 1913 they were generally repaired, upstairs rooms were partitioned, new wooden kitchens were built on, yards were concreted and lavatories were removed and placed within the peat sheds.



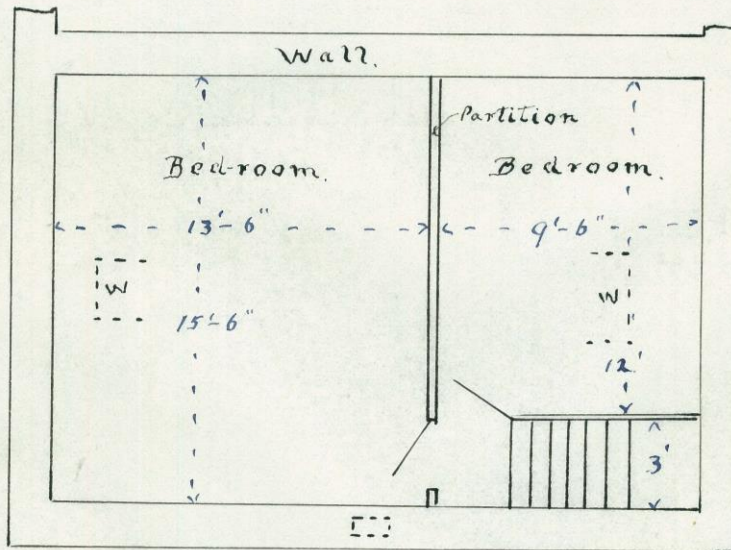
Police Cottages from the south east pre 1944

Police Cottage

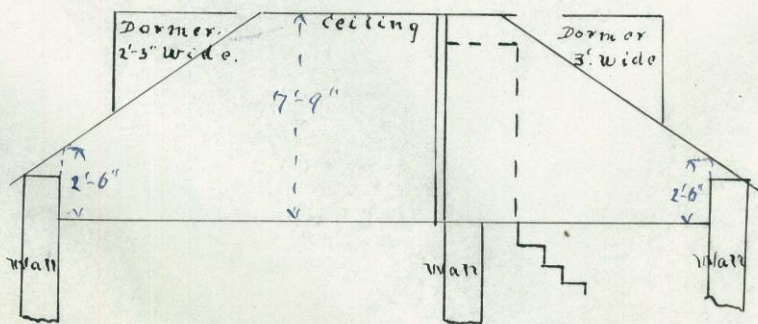
Scale $\frac{1}{8}$ " To 1'



Ground Floor.



First Floor



ELEV First Floor

R.A. B. Asoley,
 Colonial Engineer
 23rd May.

Floor plan for Police Cottages showing lean-to kitchen and partitioned first floor dated 25 May 1921

POLICE COTTAGES

VERSION: 25 September 2017

In April 1927 Cottage No 1 was occupied by D Lehen, government carter; 2 by Constable Swain; 3 by J D Evans, engineer government launch; 4 by Constable S Wilkins; 5 by Constable E Headford; and 6 by Senior Constable Hooley.



Police Cottages late 1940s

In June 2002 the Police Cottages were designated as buildings of special architectural or historic interest. The current cottages were extensively internally refurbished in 2007 with new extensions built on at the back. There are now six cottages from west to east with the seventh house, the “sergeant’s house” consisting of two cottages converted into one. They are owned by the Falkland Islands Government and are used as rental accommodation.



2019