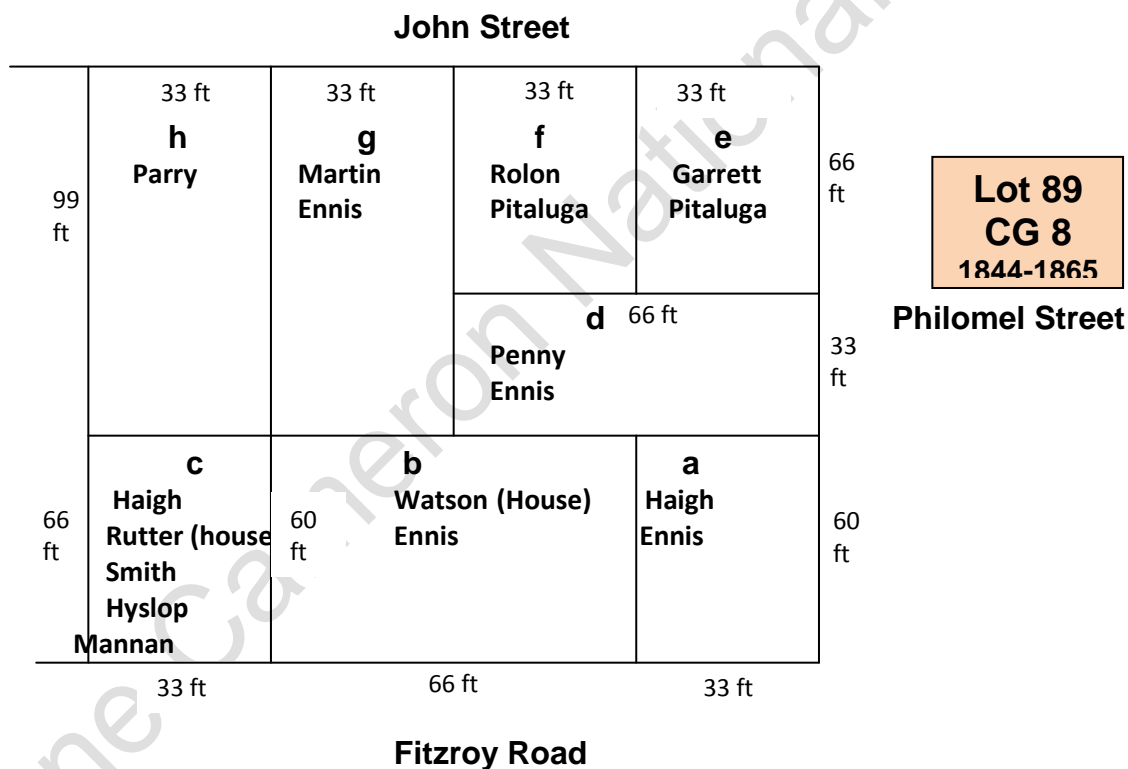


## 6 FITZROY ROAD LOT 89c; CROWN GRANTS 8 & 306

This stone cottage is one of a group on the north side of Fitzroy Road.

On 5 August 1844 Crown Grant 8 was issued to **John SCULLEY** for £50 being Lot 89 in Section O containing half an acre with a front to John Street and rear to Fitzroy Road. [CG 8]

On 10 September 1844 **John SCULLEY**, farmer of Sparrow Cove, granted to **James WATSON**, labourer of Stanley, a portion of Town Lot 89 “Containing in front to the holdings of Richard Penny (d) and William Martin (g) on part of said Town Lot No 89 on the North Side Sixty Six feet in the rere to the Fitzroy Road the like number of Sixty Six feet and in depth from front East Side to rere on the part of said Town Lot No 89 in possession of Joseph Haigh (a) Sixty feet and on the West Side to part of said Town Lot No 89 also in possession of Joseph Haigh (c) Sixty feet Bounded on the North by part of said Town Lot No 89 in the Possession of Richard Penny and William Martin, on the South by the Fitzroy Road on the West by part of said Town Lot No 89 in possession of Joseph Haigh and on the East by part of said Town Lot 89 in possession of Joseph Haigh fronting to Philomel Street as of a Map thereof hereon Delineated will Appear” for £5. [BUG-REG-1; 18] - 89b A house was built before 12 December 1848

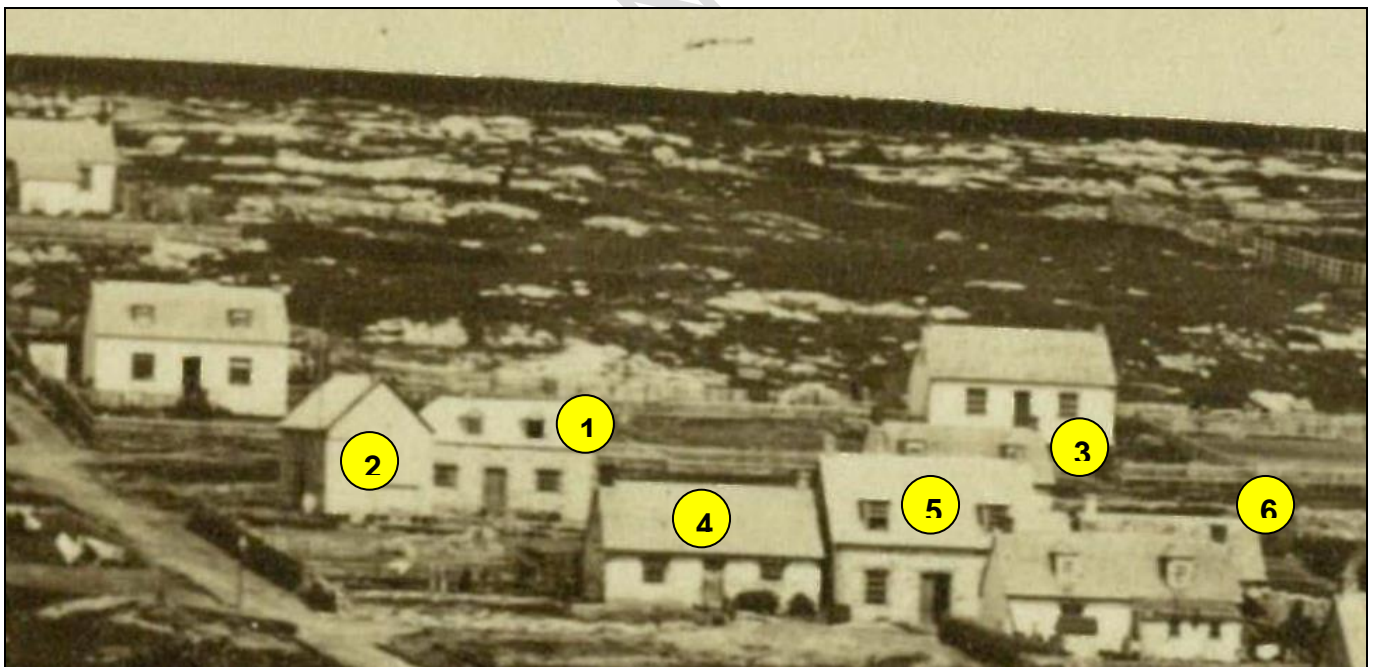


On 16 January 1847 **John SCULLEY**, farmer of Sparrow Cove, granted to **William MARTIN**, boot and shoemaker of Stanley, a portion of Town Lot 89 “Containing in front to John Street Thirty Three feet in the rere to the holding of James Watson on part of said Town Lot Number Eight Nine the like Number of Thirty three feet and in depth from front to rere on the East and West Sides Ninety Nine feet Bounded on the North by John Street on the south by the holding of James Watson on the East by Portion of Said Town Lot Number Eighty Nine in possession of Thomas Rolon and Richard Penny and on the West by another Portion of Said Town Lot Number Eighty Nine in possession of Frances Henry Parry Head Constable” for £5. [BUG-REG-1; 26] - 89g A house was probably built before 26 April 1848

On 16 January 1847 **John SCULLEY**, farmer of Sparrow Cove, granted to **Joseph HAIG**, carpenter of Stanley, a portion of Town Lot 89 “being the South Eastern and South Western Corners thereof The South Western Corner containing in front to the Fitzroy Road Thirty Three feet in the rere to the holding of Francis Henry Parry the like number of Thirty Three feet and in depth from front to rere on the East and West sides Sixty Six feet respectively Bounded on the North by the holding of said Francis Henry Parry on the South by the Fitzroy Road on the East by the holding of James Watson and on the West by Town Lot No 88 the South Eastern Corner containing in front to the Fitzroy Road Thirty Three feet in the rere to the holding of Richard Penny the like number of Thirty Three feet and in depth from front to rere on the East and West sides respectively Sixty feet Bounded on the North by the holding of Richard Penny on the South by the Fitzroy road on the East by Philomel Street and on the West by the holding of James Watson” for £5-8-4. [BUG-REG-1; 51] - 89a and 89c

On 16 January 1847 **John SCULLEY**, farmer of Sparrow Cove, granted to **Richard PENNY** of John Street Stanley, a portion of Town Lot 89 “containing in front to Philomel Street Thirty Three feet in the rere to the holding of William Martin on part of Said Town Lot Number Eighty Nine the like Number of Thirty Three feet and in depth from front to rere in the North and South Sides respectively Sixty Six feet Bounded on the North by the holding of James Garrett and Thomas Rolon on the South by the holdings of James Watson and Joseph Haigh on the West by the holdings of William Martin and on the East by Philomel Street” for £5-8-4. [BUG-REG-1; 28] - 89d

On 1 September 1865 **William James RUTTER**, pilot of Stanley, and **Mary RUTTER**, his wife, granted to **George SMITH**, shepherd of Stanley, a portion of Town Lot 89 bounded “on the **South** by the Fitzroy Road, on the North by the holding of Francis Henry Parry, on the West by Francis Henry Parry and East by the holding of Laurence Innes together with the messuage and Buildings thereon” for £165. [BUG-REG-1; 286] - 89c

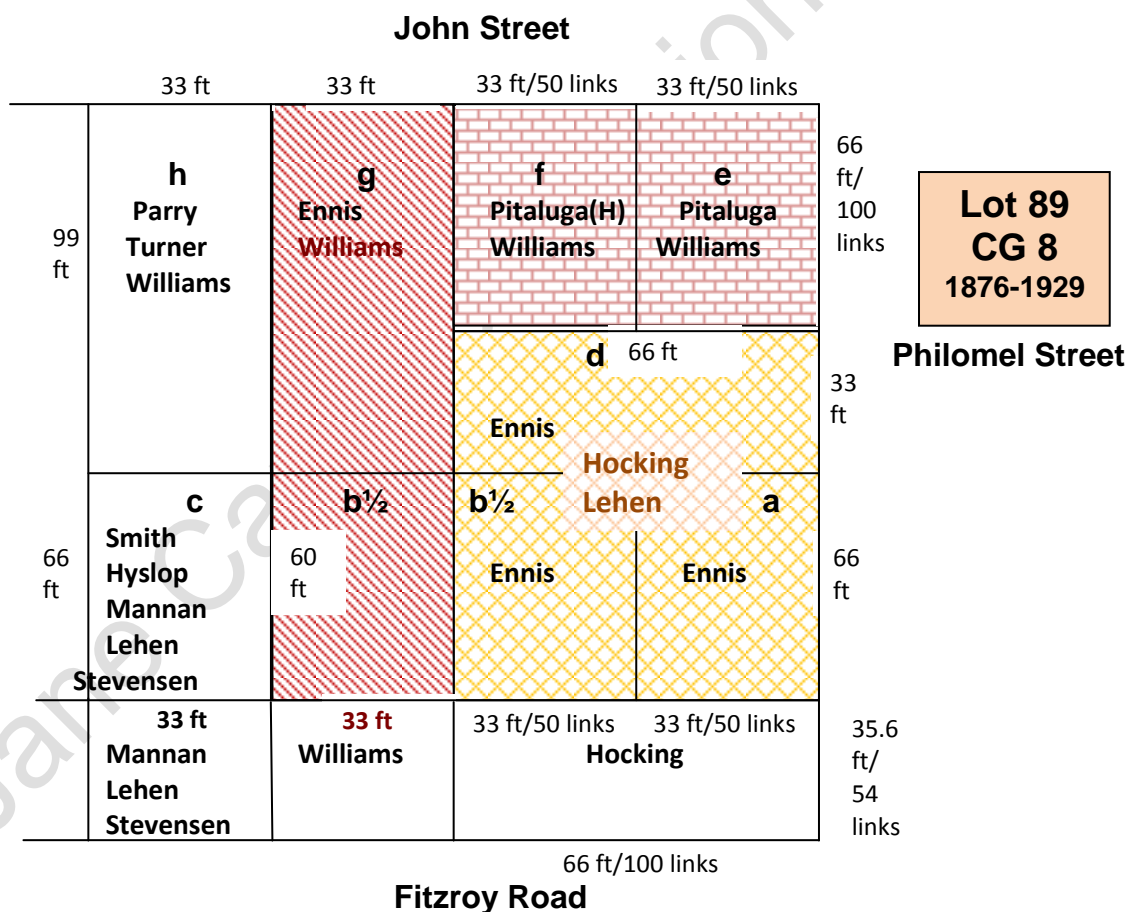


1870s - Blake Album, JCNA

1. Stone cottage now part of Victory Bar
2. Wooden building now living quarters for Victory Bar
3. Stone cottage just visible to south west of 5. 89c
4. Stone cottage (semi-detached with 5.) 89e
5. Stone cottage (semi-detached with 4.) 89f
6. Stone cottage just visible behind house on north side of John Street - 89g



Dec 1878 after the peat slip - FIC Collection, JCNA  
 Stone cottage with dormers partially obscured behind large house



On 25 September 1884 **George Patterson SMITH**, farmer of Johnsons Harbour, through his attorney **John James FELTON**, accountant of Stanley, granted to **Samuel HYSLOP**, shepherd, a portion of Town Lot 89 bounded "on the South by the Fitzroy Road on the North by the holdings of Francis Henry Parry On the West by the holdings of Francis Henry Parry and on the East by the holdings of Lawrence Ennis together with the Messuage and buildings thereon" for £130. [BUG-REG-3; 222] - 89c



On 3 September 1885 **Samuel HYSLOP**, labourer of Stanley, granted to **Henry MANNAN**, carpenter of Stanley, a portion of Town Lot 89 bounded “on the South by the Fitzroy Road, on the North by the holdings of the late Francis Henry Parry, on the West by the holdings of the late Francis Henry Parry and on the East by the holdings of the late Lawrence Ennis together with the messuage and buildings thereon” for £121. [BUG-REG-3; 277] - 89c

On 16 June 1914 **Henry MANNAN**, carpenter of 46 Vermont Avenue, Toronto, Canada, granted to **John LEHEN**, merchant of Stanley a portion of Town Lot 89 bounded “on the East by lands in the holding of the Estate of the late Louis Williams 99 feet, On the North 33 feet 4 inches by lands also in the holding of the Estate of the late Louis Williams on the West 99 feet by lands also in the holding of the Estate of the late Louis Williams On the South by Fitzroy road 33 feet 4 inches together with all buildings and fences thereon” for £250. [BUG-REG-8; 167] - 89c

On 16 June 1914 **Jane LEHEN**, of Stanley, **Alice Maude STEVENSEN** a portion of Town Lot 89 being “the South East corner of Lot No 89 bounded on the East by lands in the holding of the Estate of the late Louis Williams 99 feet, on the North 33 feet, 4 inches by lands also in the holding of the Estate of the late Louis Williams on the West 99 feet by lands also in the holding of the Estate of the late Louis Williams, on the South by Fitzroy Road 33 feet 4 inches together with all buildings thereon” for £400. [BUG-REG-9; 312] - 89c



Part of the 1943 Crown Grant map



1927 Left hand cottage - FIC Collection, JCNA



1994 before being re-roofed - JCNA