

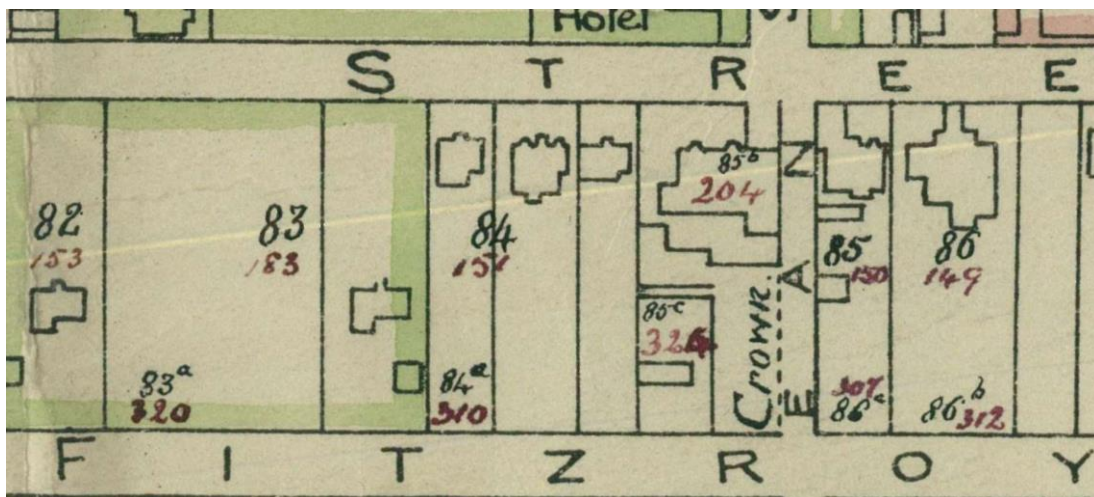
## 34 JOHN STREET (COLONIA COTTAGE) – CROWN GRANT 151 (LOT 84, SECTION O) & 310 (LOT 84a)

On 13 June 1863 Crown Grant 151 being Lot 84, Section O containing half an acre was issued to **Charles Montague DEAN** for £86. Bounded on the north by John Street 200 links; on the south by Fitzroy Road 200 links; on the east by Crown Grants 204 & 209, Lots 85B & 85C, 250 links; and on the west by Crown Grant 152, Lot 83 by 250 links. [CG 151]

On 25 May 1887 Crown Grant 310 being Lot 84a, Section O containing 17 175/625 perches or thereabouts was issued to **Charles Montague DEAN** for £11. Bounded on the north by lots 83 and 84 2 chains, on the east by Crown Land 54 links, on the south by Fitzroy Rd 2 chains, on west by Crown land 54 links. [CG 310]

In his will dated 3 January 1901 **Charles Montague DEAN** bequeathed “...my two stone Cottages *Crown Grant 151 & 310* near to the Stanley Bakery.” to his son **William Markham DEAN** and “my freehold messuage at Stanley aforesaid known as the Stanley Bakery *Crown Grant 149* and my two timber built houses *Crown Grant 151 & 310* near thereto” to his son **Harold DEAN**. [BUG-REG-6; 102] - Two stone cottages 34 John Street and 38 John Street; two timber built houses 36 John Street and (Montagu House?)

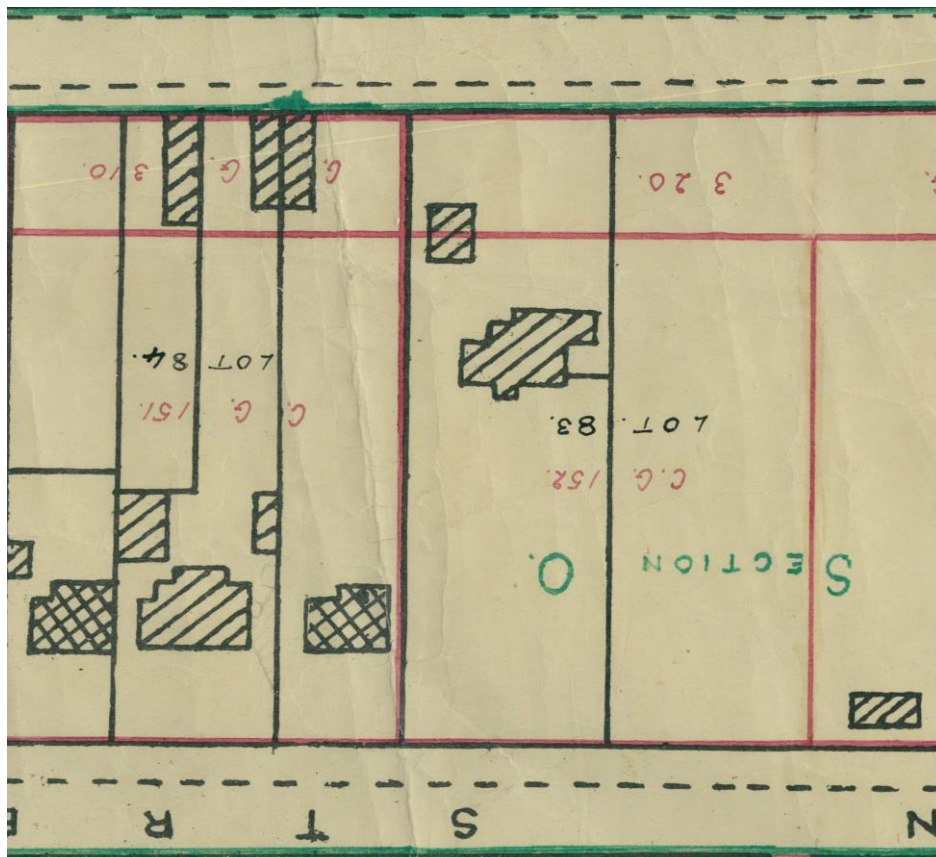
On 30 March 1922 **William Henry LUXTON**, executor of the **Estate Orissa C A DEAN** granted **Ulrick Henry CLASEN** part of Crown Grant 151 for £450 being “*All that parcel of land in the Town of Stanley and being part of Lot 84 with house and all erections thereon. Bounded on the East by part of Lot 84, 305 links in the possession of G I Turner on the South by Fitzroy Road 62 links, on the West by lot 83, 305 links, on the North by John Street 62 links.*” [BUG-REG-9; 65]  
- 34 John Street?



Part of 1923 Crown Grant Map



Centre 34 John Street 1936 - FIC Collection, JCNA



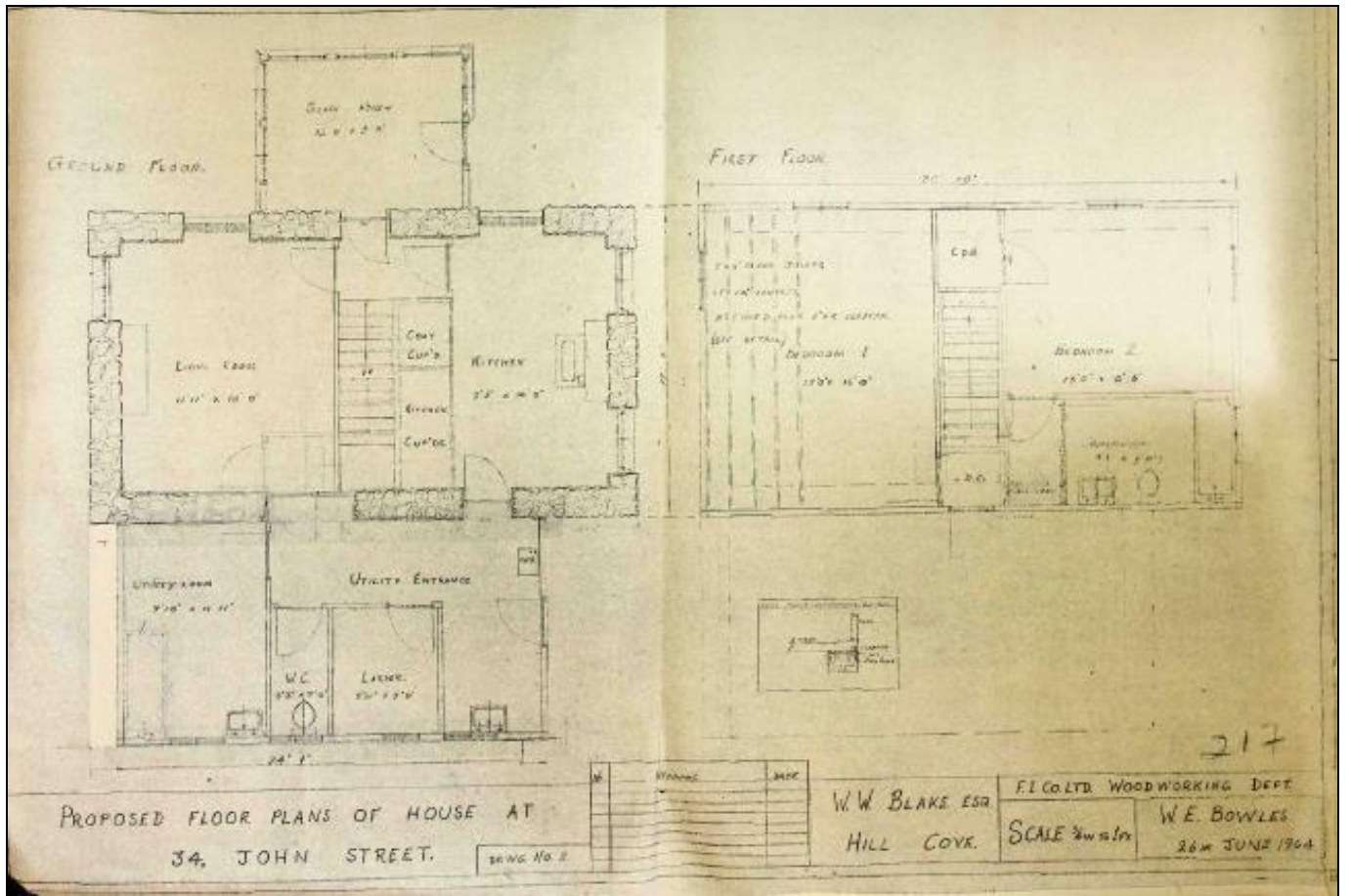
Part of 1943 Crown Grant map

L-R: 38 John Street (stone), 36 John Street (timber), 34 John Street (stone)









1993 - JCNA