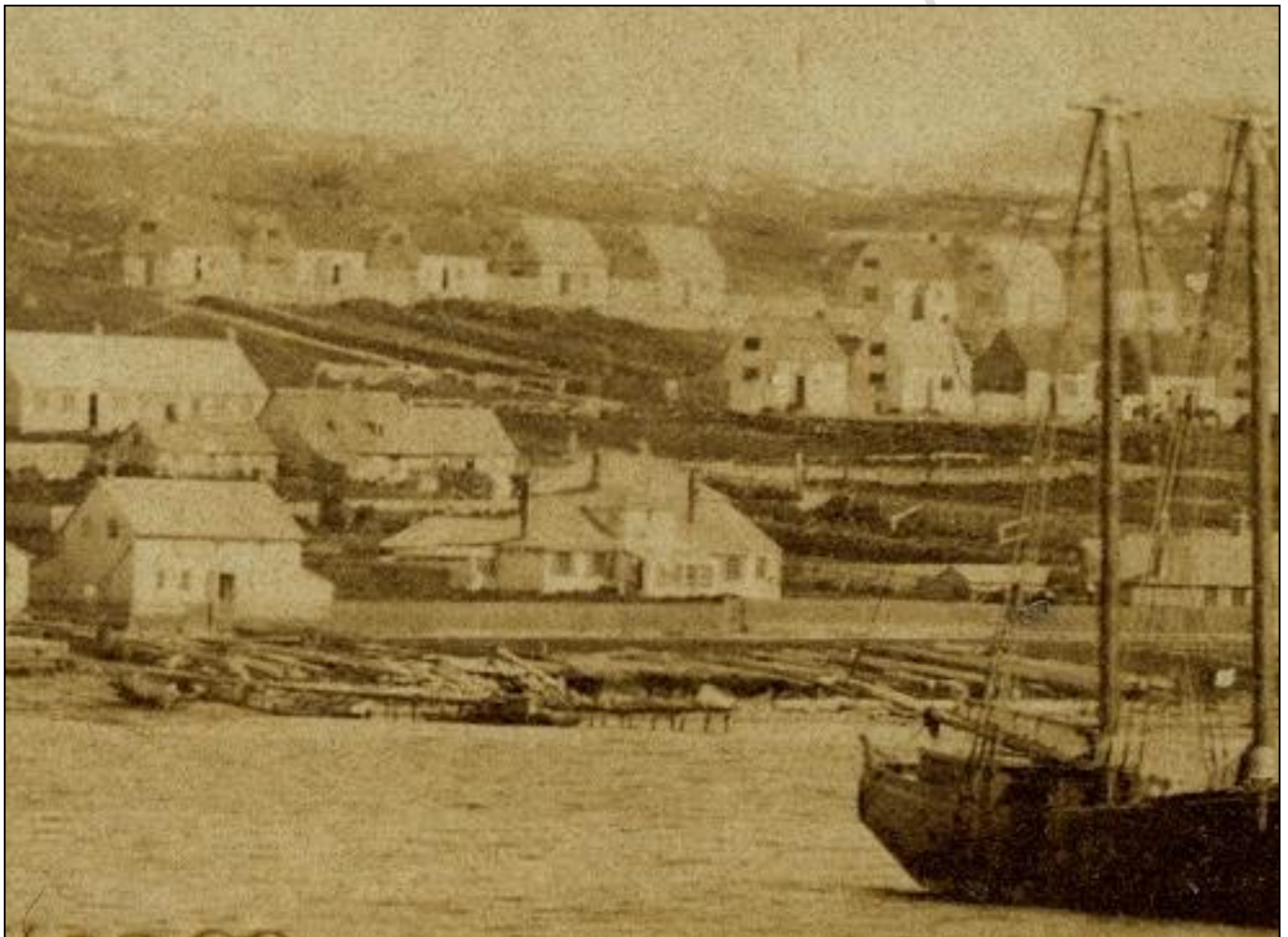


**10 PIONEER ROW OR 9 UPPER ROW
OR 22 PENSIONERS COTTAGE ALLOTMENTS
NOW 9 PIONEER ROW**

This house was one of the original “two roomed kit houses worth £50 each” that were shipped down on board the *Victory* which arrived in Stanley 13 October 1849. Eighteen cottages were built on Pioneer Row (or *Upper Row* as it was originally called and *Upper Pensioners Row* in the latter part of the 19th century) for the military pensioners who also arrived on the same ship. This house was originally 9 Upper Row and was allotted to **Thomas VARNEY**, a private and military pensioner from England, who had arrived with his family 13 October 1849 on board the *Victory*.

On 1 August 1856 Crown Grant 112 was issued to **Thomas VARNEY** for services performed being Pensioners Cottage Allotments 22 containing 24 poles and measuring 60 links x 250 links. [CG 112]

Thomas with his family on the "Ealing Grove" 12 February 1858 and in 1858 the cottage was allocated to a member of the newly arrived detachment on the *Ealing Grove*. [B10]



1863 – Eighth house from the left (behind the mast), top row

On 9 February 1880 Crown Grant 251 was issued to **William CLITHERO** for £65 being Pensioners Cottage Allotments 22 containing 24 poles and measuring 60 links x 250 links. [CG 251]

In 1891, for tax purposes, 9 East Upper Pensioners Row belonging to **William CLETHERO** was valued at £15. [FI Gazette]

On 11 October 1922 **William CLETHEROE** granted to his youngest son, **John CLETHERO**, No 22 Pensioners Cottage Allotments containing 24 poles and bounded *on the North, West and South by Government Land and on the East by Lot numbered Twenty three* for five shillings. [BUG-REG-9; 91]



Late 1940s – Seventh house from right, top row

On 27 February 1998, 9 Pioneer Row was gazetted as being a building or structure in the Falkland Islands designated as being of architectural or historic interest.



1995