

THE CHAPEL OF REST

As the cemetery was at that time some distance from the town and due to funeral parties being exposed to bad weather during the reading of the burial service a chapel was constructed within the precincts of the cemetery. Work commenced on the small wooden building in May 1851 and it was finished the same year at a cost of £204.

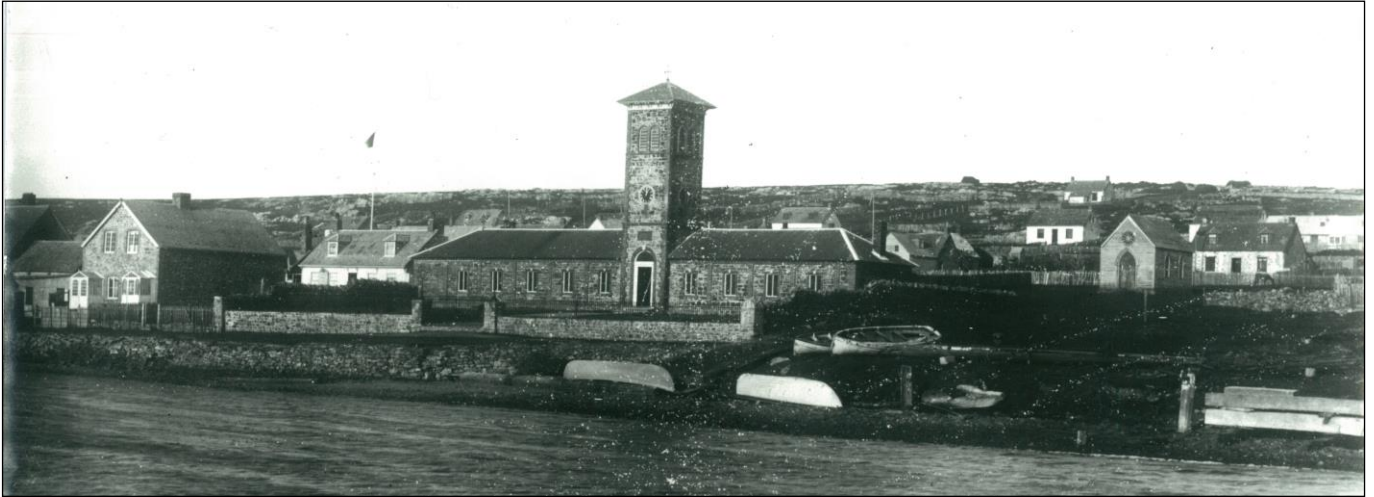
In May 1855 described as being in the centre of the burial ground and *“a small chapel for the performance of the service in bad weather and the deposition of bodies before interment. It is _____ feet long, _____ feet wide, with buttresses at the angles, rose window over the door, and small steeple and cross: the whole built of wood. No fixtures except a couple of trestles.”*

In 1871 the Mortuary Chapel was brought up from cemetery and converted in 1872 into an Infants School at a cost of £75-13-4. The Infant School is the junior branch of the Government day school; its formation became a necessity, as it was impossible for one master to do justice to the scholars, when the little ones become sufficiently advanced they are drafted into the upper school.



The Chapel of Rest still with a round window after being moved behind the Exchange Building – photo Blake Album

By 1884 the Infant School had been moved into part of the Barracks.



The Infant School (to the right of the photo) still with a round window



After peat slip of 2 June 1886 – (window at some point changed from round to square)

In 1887 the land that the Exchange Building was on was transferred to The Clergy and Laity of the Church of England for the site of a church and the former Infant School building was removed and placed beside the Public Jetty at the corner of Ross Road and Philomel Street to act as a Customs Office.



To the left, as the Customs Office 1890s – Luxton family collection



Circa 1907-1909 replaced by a new customs shed