

**THE OVERSEAS DEVELOPMENT
ADMINISTRATION**

**FALKLAND ISLANDS AIRPORT
FEASIBILITY STUDY**

SUPPLEMENTARY REPORT

1972

R/1171 (K.E.A.)

REYNOLDS, PALMER & TRITTON
Consulting Engineers
Southam Bridge House
61 Southam Street
London SE18 1SA

**THE OVERSEAS DEVELOPMENT
ADMINISTRATION**

**FALKLAND ISLANDS AIRPORT
FEASIBILITY STUDY**

SUPPLEMENTARY REPORT

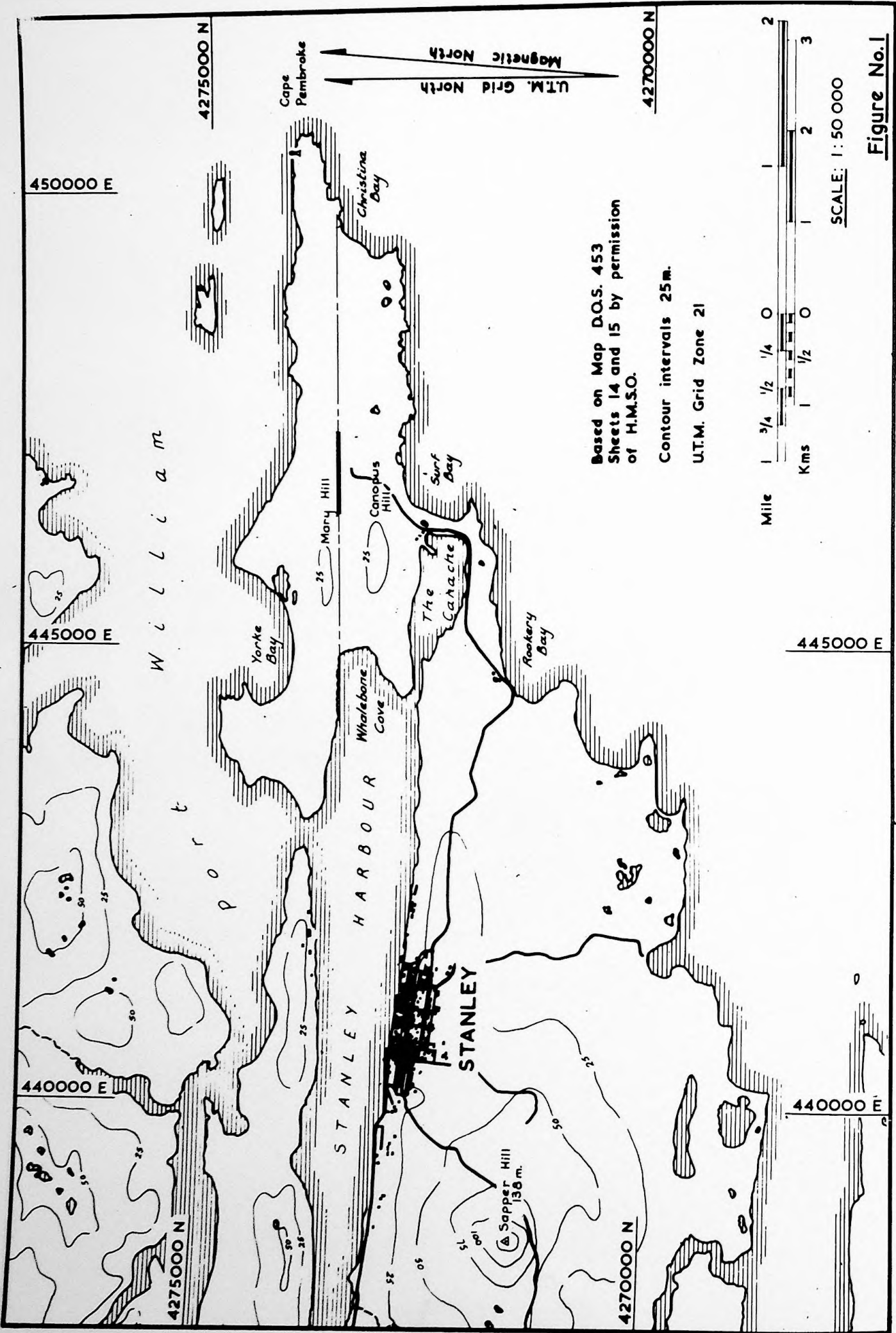
1972

R/1171 (K.E.A.)

**RENDEL, PALMER & TRITTON
Consulting Engineers
Southwark Bridge House
61 Southwark Street
London SE1 1SA**

CONTENTS

<u>Section No.</u>		<u>Page No.</u>
1.	INTRODUCTION	1
2.	MINIMUM FACILITIES REQUIRED	
	2.1 Aircraft Movement Area and Airfield Strip	1
	2.2 Road Access	2
	2.3 Buildings	2
	2.4 Water Supply	4
	2.5 Airfield Lighting	4
	2.6 Navigational Aids and Tele- communications	4
	2.7 Power Supply	4
	2.8 Fire and Rescue Service	4
	2.9 Miscellaneous	5
3.	COST ESTIMATE FOR MINIMUM FACILITIES	5
 TABLES		
Table 1	Floor Area Allocation for Buildings	3
Table 2	Cost Estimate for Minimum Facilities	6
 FIGURES		
Figure 1	Airport Location	Opposite 1
 DRAWINGS		
Drawing 1	Airport Layout	
Drawing 2	Road Access	
Drawing 3	Terminal Building - General Arrangement	



Based on Map D.O.S. 453
 Sheets 14 and 15 by permission
 of H.M.S.O.

Contour intervals 25m.

U.T.M. Grid Zone 21

SCALE: 1:50 000

Figure No.1

1. INTRODUCTION

Included in the Terms of Reference for a Feasibility Study for an airport in the Falkland Islands given under cover of a letter dated 19th November, 1971, addressed to Rendel, Palmer and Tritton by the Overseas Development Administration of the Foreign and Commonwealth Office was a requirement for the provision of an estimate of the cost of the minimum work necessary for the provision of suitable aircraft movement areas for the operation of light passenger aircraft.

This Supplementary Report provides preliminary cost estimates in accordance with the above requirement and in consideration of the provision of minimal facilities for the operation of light aircraft. The Supplementary Report should be read in conjunction with the Feasibility Study Report.

The site considered was the amended Site A as described in the Feasibility Study Report and shown in Figure No.1.

2. MINIMUM FACILITIES REQUIRED

2.1 Aircraft Movement Area and Airfield Strip

In assessing runway length requirements consideration was given to aircraft types of less than 12,500 lb gross weight known to be operating in the South American area.

The cost estimate is based upon the following provisions for the movement areas and strip:

- runway length of 900 metres (2950 ft);
- runway width of 25 metres;
- overall strip width of 80 metres;
- link taxiway width of 12 metres;
- apron of 25 metres by 40 metres giving a stand capacity for three light aircraft;
- 3 metre wide shoulders adjacent to movement areas.

A possible airport layout is shown on Drawing No.1.

For the aircraft under consideration a minimum pavement thickness of 195 millimetres would be required. The cost estimate has been based upon a sub-base of 75 millimetres thickness, a 100 millimetre thick crushed stone base and a 20 millimetre thick asphalt surfacing to all aircraft movement areas.

The usability of the single runway, assuming the F.A.A. criterion of an 11 knot cross-wind, would be 52%, which figure would be increased to 76% by the provision of a cross-runway. If the maximum permissible cross-wind components allowed under British Civil Airworthiness regulations (20 knots) are assumed, however, the usability becomes 83% for a single runway and 93% with a cross-runway. The cost estimate has been based upon a single runway.

2.2 Road Access

In order to reduce the road costs to an absolute minimum the existing track would not be realigned but would be utilized over its full length. Soft spots in the track would be excavated and backfilled and a regulating course of 150 millimetres average thickness would be laid over the full length. From the isthmus at the east end of the Canache a new length of road, approximately 1 kilometre long, would be constructed to the terminal area as shown on Drawing No.2. No provision has been made in the cost estimate for bitumen sealing and surface dressing.

2.3 Buildings

The cost estimate allows for the provision of a single two-storey combined terminal/control building. A sub-station as described in the Feasibility Study Report is also provided for. The floor areas allocated to individual purposes in the buildings are shown in Table 1.

TABLE 1. FLOOR AREA ALLOCATION FOR BUILDINGS

Terminal/Operations Building	Area in sq.m.
Passenger Waiting Area	41.0
Baggage Handling Area	8.5
Airline Office and Check-in	4.0
Immigration	2.0
Health	2.0
Surgery/Office	15.0
Corridors	14.0
Toilets	16.0
Communications Equipment	18.0
Signals Officer-Office & Workshop	22.5
Stairway	9.0
Store under Stairs	4.5
Control Room	17.5
Briefing Area	12.5
A.T.C./Airport Manager's Office	17.5
TOTAL	204.0
<u>Sub-station</u>	
Standby Generator	25.0
Switchgear	15.0
Transformer	10.0
Store	30.0
TOTAL	80.0

2.4 Water Supply

The cost estimate includes for the provision of a water main and storage tanks as described in the Feasibility Study Report.

2.5 Airfield Lighting

The provisions for airfield lighting would be as detailed in the Feasibility Study Report.

2.6 Navigational Aids and Telecommunications

By the reduction of the capacity of the telephone link between the airport and Stanley the costs have been reduced by £10,000. All other navigational aids and telecommunications would be as detailed in the Feasibility Study Report.

2.7 Power Supply

The omission of the overhead line connection from the power station in the town and the provision of main and standby generating plant at the airport would reduce the cost of the Works by £15,000, as shown in the cost estimate. Such a system, however, would be less reliable and would cost more to operate and maintain.

2.8 Fire and Rescue Service

The minimum aircraft fire fighting facilities required for the aircraft under consideration would be in accordance with the recommendations of the Board of Trade publication CAP 168 for a category II airport. This would require the provision of the following equipment:-

- 1 No. set of equipment for conversion of an existing firefly Land Rover to foam production capability.
- 1 No. trailer complete with dry powder and rescue equipment.
- 1 No. hand trolley for fighting engine fires.

The provisions of rescue equipment and of water storage for domestic fire protection would be as detailed in the Feasibility Study Report.

2.9 Miscellaneous

Provision has been made in the cost estimate for airport drainage, for fuelling and for maintenance equipment as described in the Feasibility Study Report. No provision has been made for fencing.

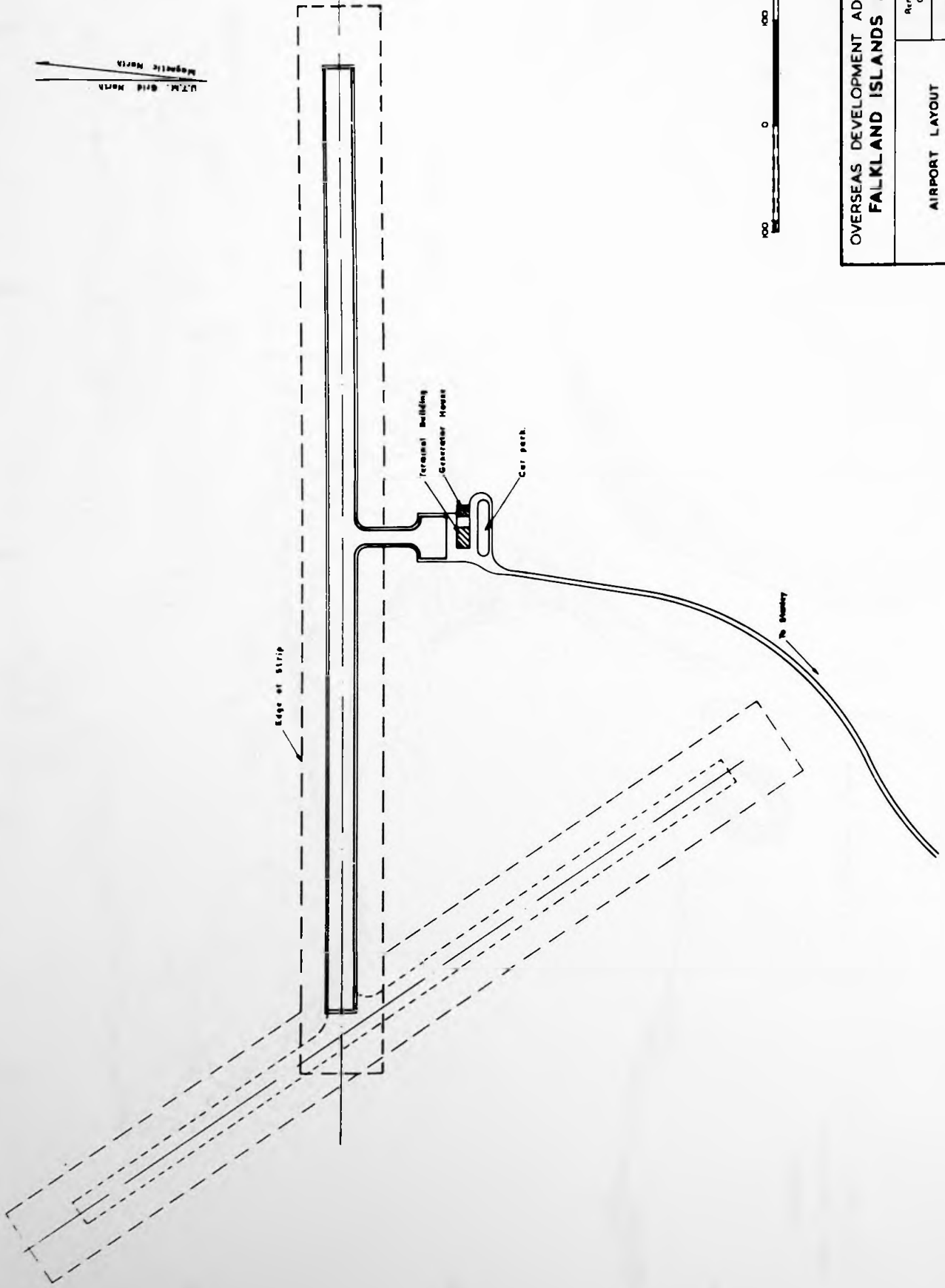
3. COST ESTIMATE FOR MINIMUM FACILITIES

For the purposes of comparison the cost estimate shown in Table 2 includes a 15% incentive loading as described in the Feasibility Study Report. It is to be expected, however, that a major reduction in the scope of the Works would necessitate the application of an additional 'loading factor' to allow for the increase in individual rates concomitant with a substantial reduction in the size of the project.

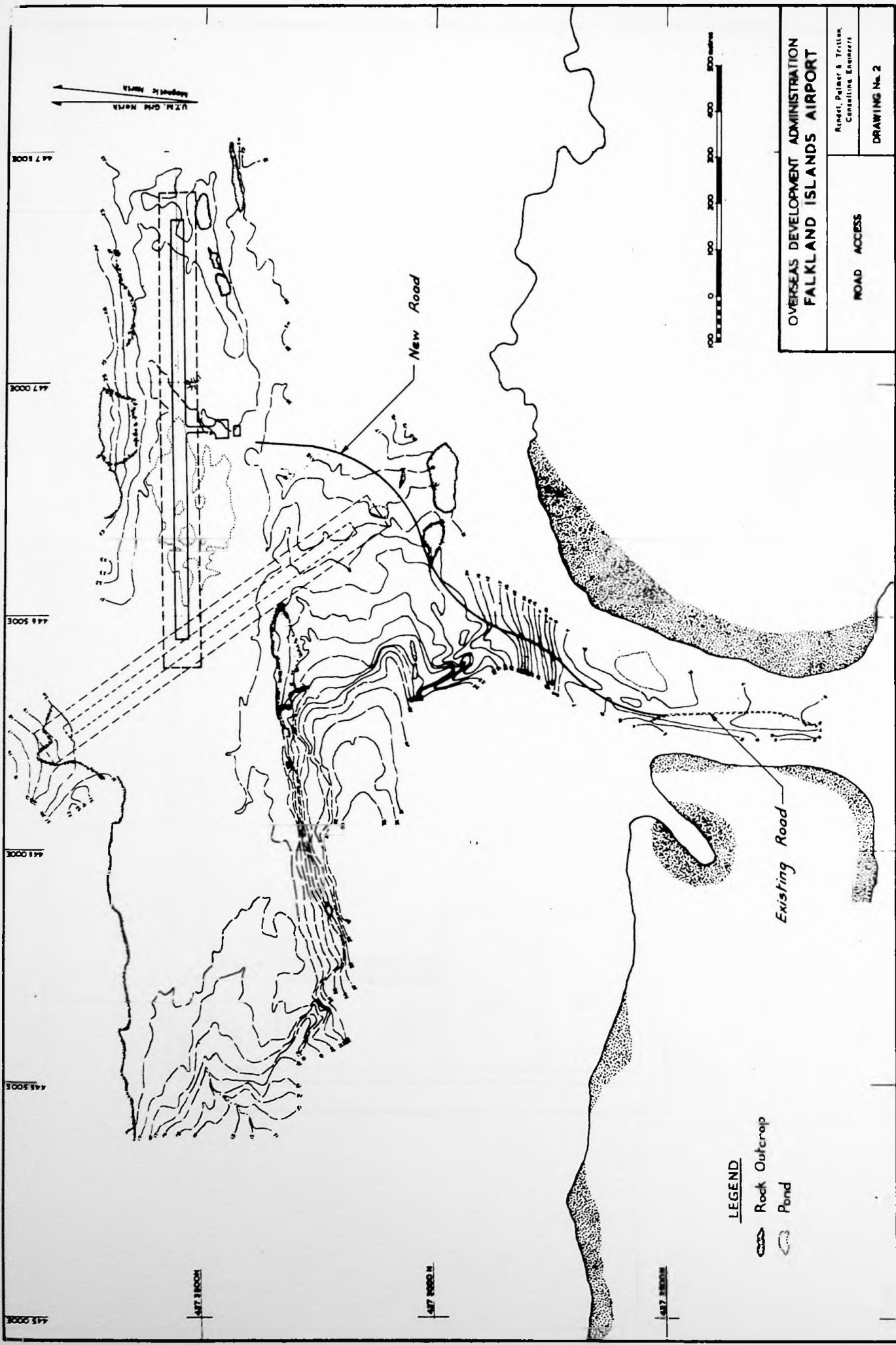
TABLE 2. COST ESTIMATE FOR MINIMUM FACILITIES

Section No.	Description	Cost in £
1	Airfield Earthworks	91,000
2	Airfield Paving	46,000
3	Road Earthworks	17,000
4	Road Paving	41,000
5	Drainage Works	38,000
6	Water Supply and Distribution	50,000
7	Power Supply	35,000
8	Airfield Lighting	30,000
9	Navigational Aids and Telecommunications	60,000
10	Terminal/Operations Building	13,000
11	Sub-station	6,000
12	Sewage Disposal	10,000
13	Airfield Markings	6,000
	Sub-Total	443,000
	Add for incentive loading (see Feasibility Report) 15%	66,000
14	Supply Fire & Rescue Equipment	3,000
15	Supply Maintenance Equipment	10,000
	Add for Labour Camp	40,000
	Imported Labour	50,000
	Shipping	100,000
	Sub-Total	712,000
	Add for Contingencies 10%	71,000
	GRAND TOTAL	783,000



U.T.M. Grid North
Magnetic North



OVERSEAS DEVELOPMENT ADMINISTRATION FALKLAND ISLANDS AIRPORT	
AIRPORT LAYOUT	Rendel, Palmer & Tritton, Consulting Engineers
	DRAWING No 1



LEGEND

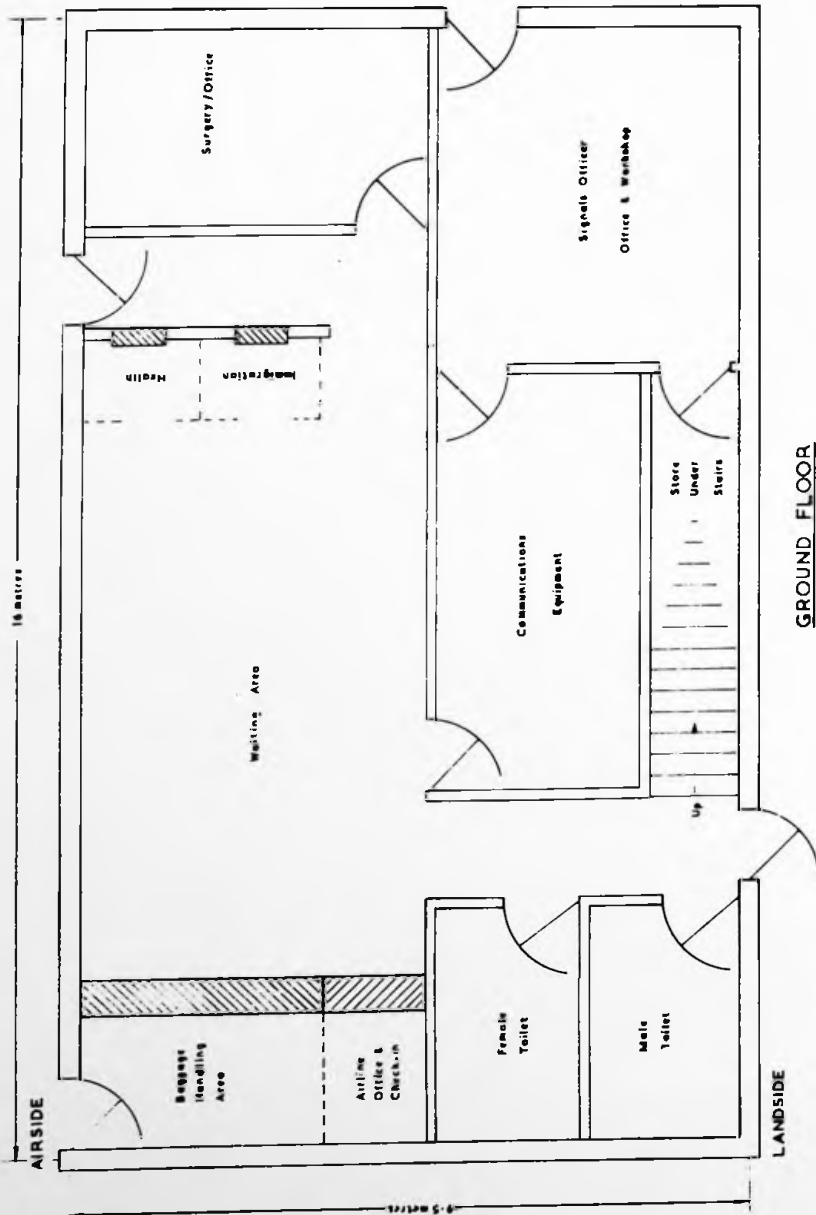
-  Rock Outcrop
-  Pond

OVERSEAS DEVELOPMENT ADMINISTRATION
FALKLAND ISLANDS AIRPORT

Reed, Palmer & Tritton,
 Consulting Engineers

ROAD ACCESS

DRAWING No. 2



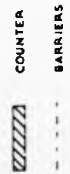
NOTE: For first floor layout see Report Drawing No 8

OVERSEAS DEVELOPMENT ADMINISTRATION
FALKLAND ISLANDS AIRPORT

Reed, Palmer & Tritton
 Consulting Engineers

TERMINAL BUILDING
 GENERAL ARRANGEMENT

DRAWING No 3



GROUND FLOOR