













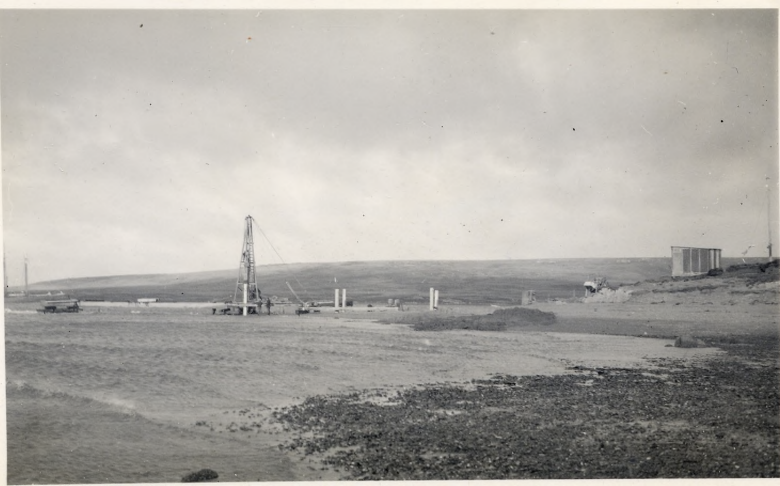
PROPOSED POSITION FOR PATERSON'S  
POINT BRIDGE.







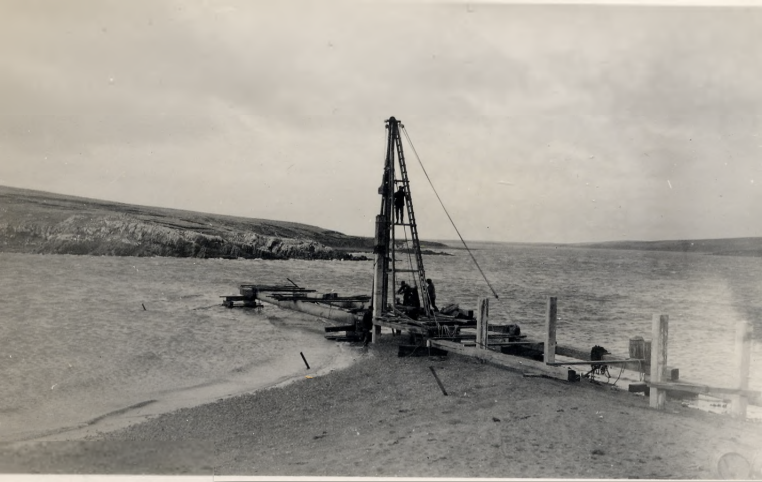




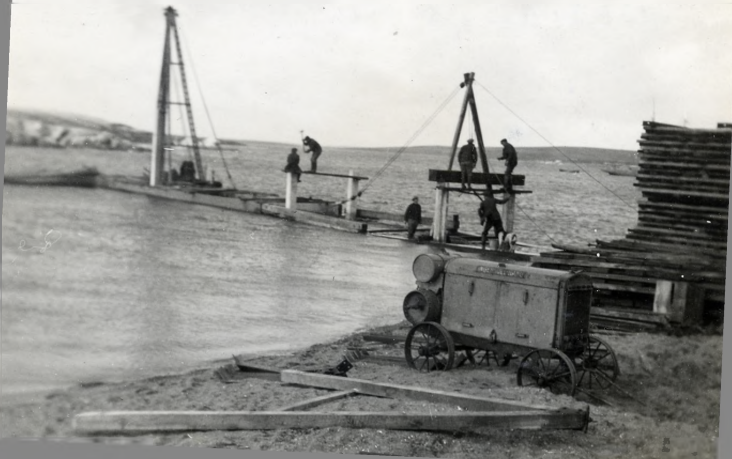




BUILDING PATERSON'S POINT BRIDGE

























BUILDING PATERSON'S POINT BRIDGE



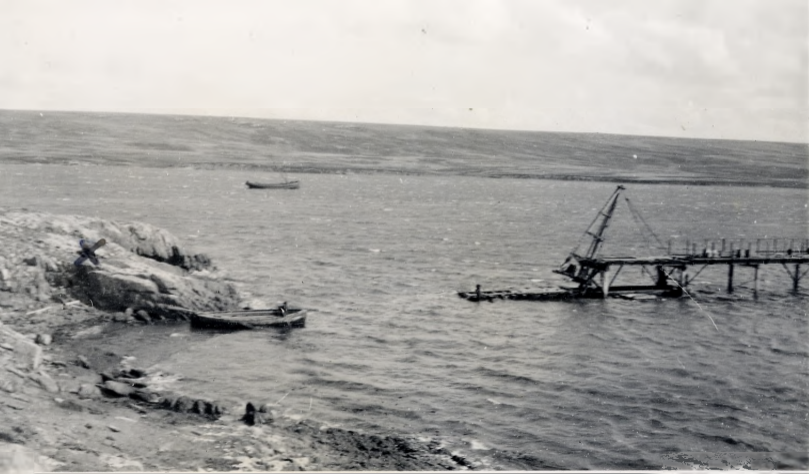


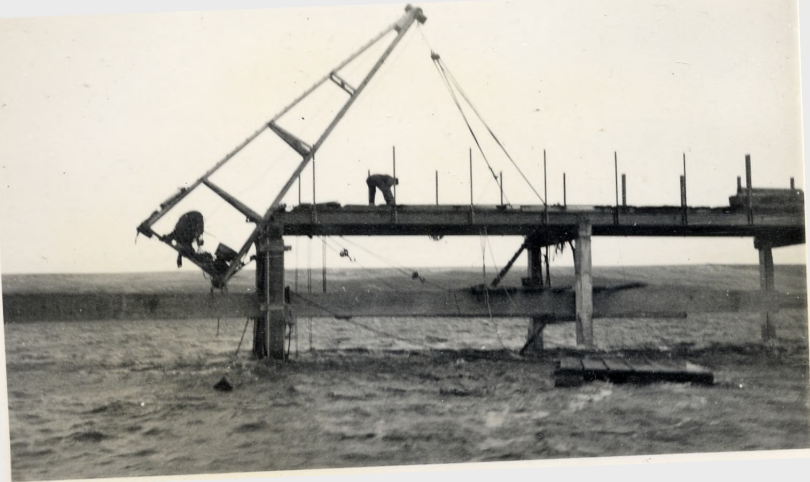




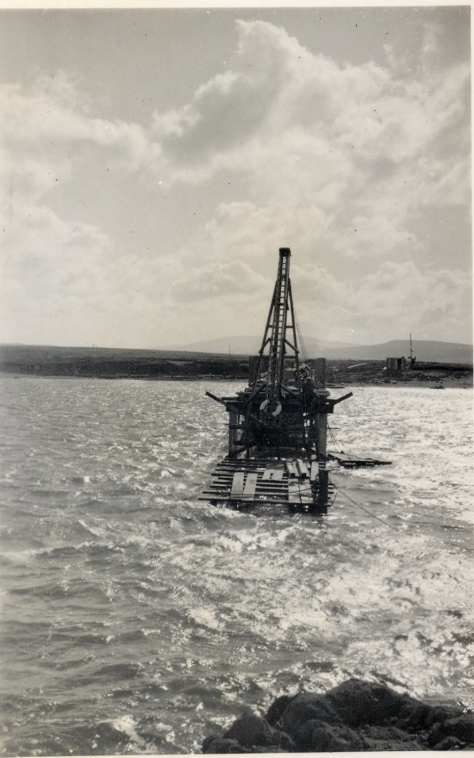


























SAWING BEARERS FOR FITZROY BRIDGE













PATTERSONS POINT BRIDGE, FITZROY









THE BRIDGE COMPLETED





The Bridge completed.





23rd OCTOBER  
DISCHARGING CARGO BATTENS EX  
GT. BRITAIN FOR FITZROY BRIDGE  
ABOUT 4800 RUNNING FEET IN LENGTHS  
OF 12' TO 40' ALL 2" x 6" TO BE  
USED FOR RAILINGS.





Building Paterson's Point Bridge.



THE FIRST FLOCK ACROSS THE BRIDGE