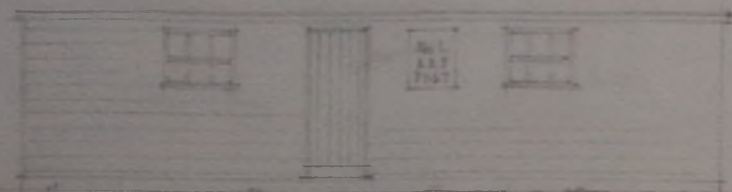
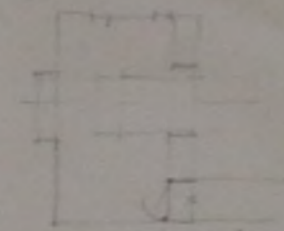
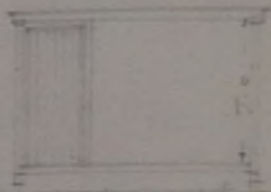


PLAN OF ACCOMODATION AT MOUNT LOW BATTERY  
SCALE  $\frac{1}{8}$  Inch = 1 Foot

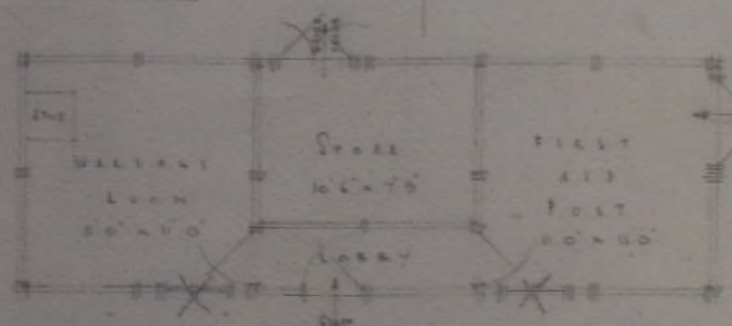
ARP HUTS



ELEVATION



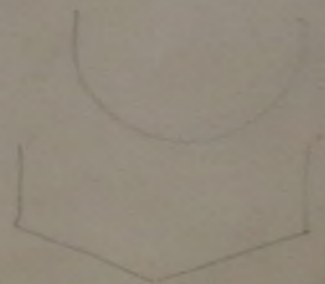
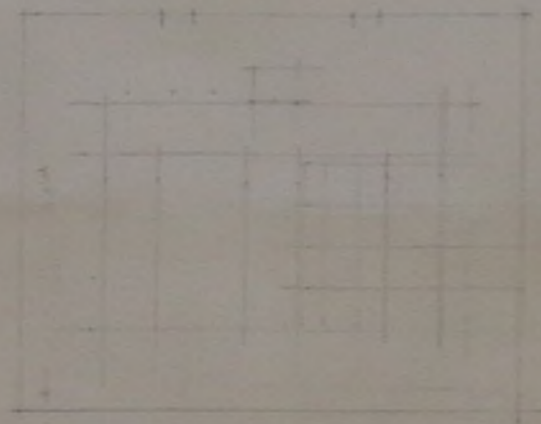
SECTION A-A



PLAN

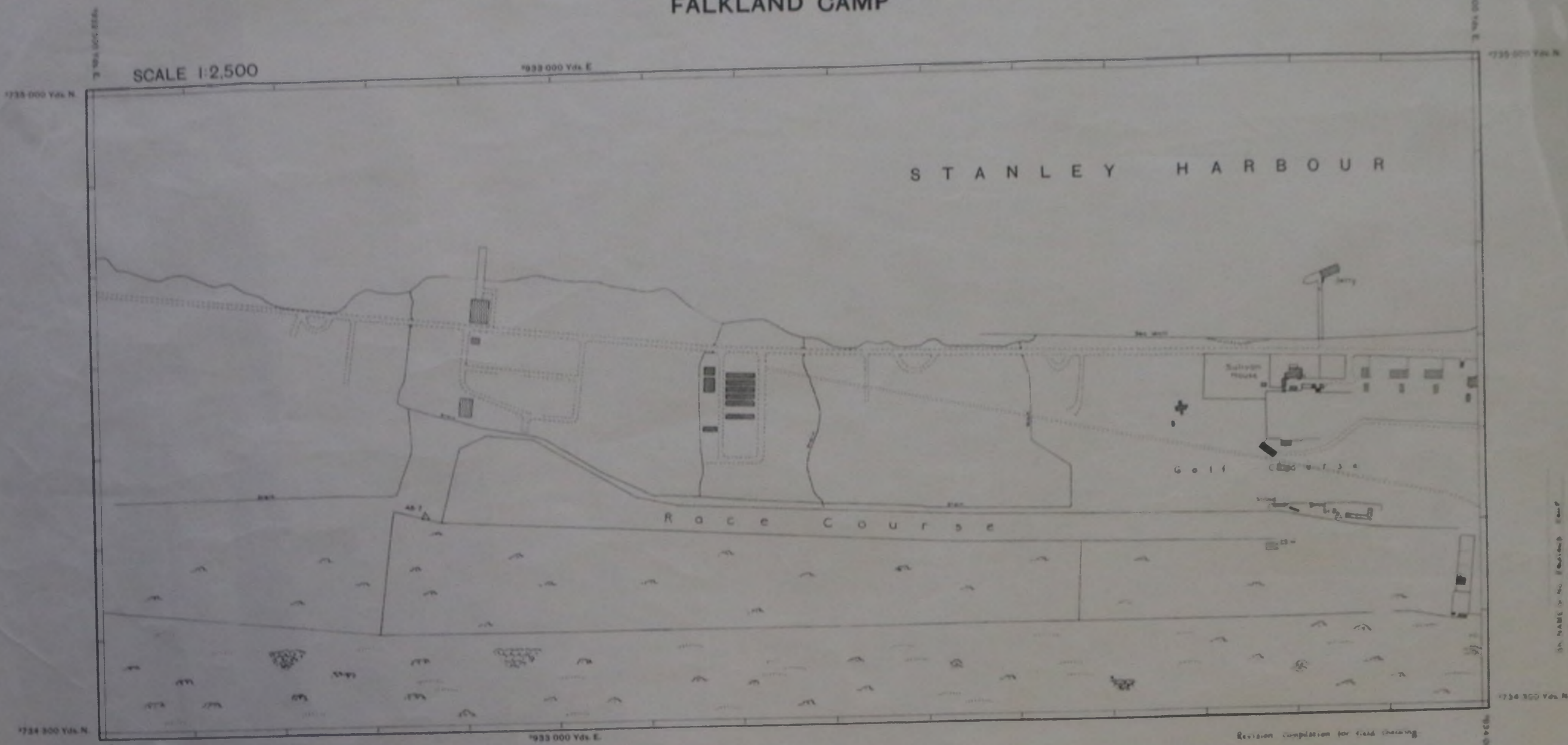
Scale 4'-0" to 1"

COUNTS	
SINGLE BONE	3
DOUBLE	2
WINDOW	0
PLAIN DOOR	1
INSIDE	4
	<u>10</u>



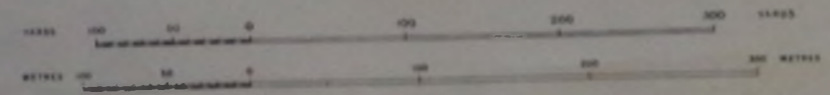
# FALKLAND ISLANDS FALKLAND CAMP

SCALE 1:2,500



SCALE 1:2,500

Buildings: Brick and Stone  
 " Wood " Steel  
 " Glass  
 " Kaurum



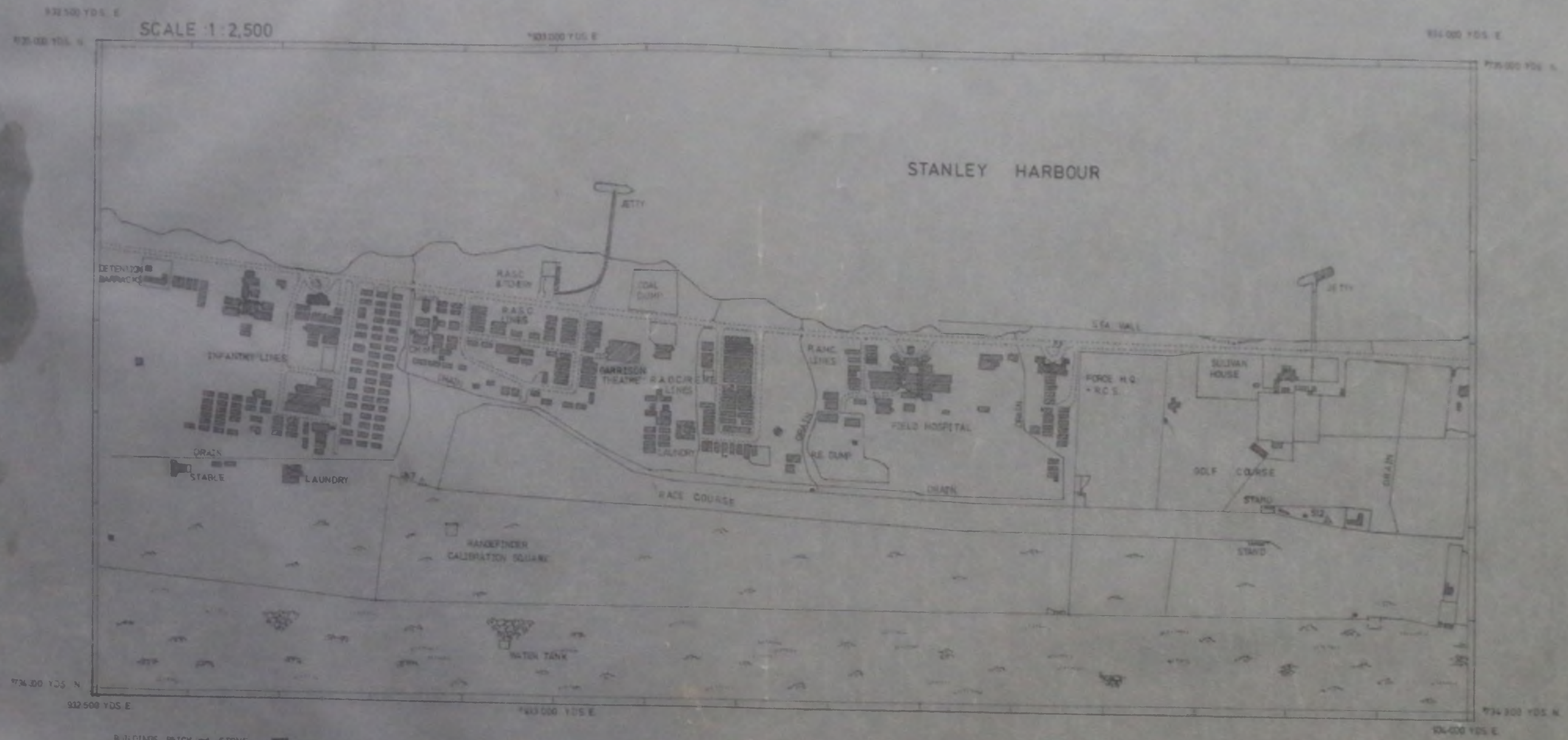
Revision completion for field checking



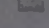

SN. NAME & No. Pictorial Map  
 SCALE 1:1,100  
 SECTION 6  
 O.S. No. 999 47  
 PLATE No. 1  
 DEMAND. FOR No. 61/1/1950

FALKLAND ISLANDS  
FALKLAND CAMP

SCALE 1:2,500

STANLEY HARBOUR



BUILDINGS BRICK and STONE   
 WOOD  STEEL   
 GLASS 

# FALKLAND ISLANDS FALKLAND CAMP

SCALE 1:2,500

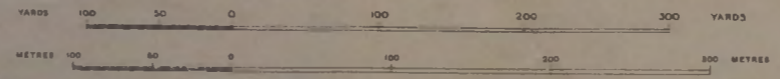
FIRST EDITION



Geographical Section, General Staff No. 4466. A  
Published by War Office 1943.

Buildings. Brick and Stone   
 " Wood " Steel   
 Glass

SCALE 1:2,500



Surveyed and Drawn by No. 2. Topographical Section (14<sup>th</sup> Corps Fd. Svy.) Coy. Royal Engineers. 1943.  
Photolithographed by O.S. 1943.

U.S. War Department Polyconic Projection (Southern Hemisphere)  
Band V (South), Zone H.  
Grid North is 00°41' East of True North  
at the centre of this Sheet



# FALKLAND ISLANDS FALKLAND CAMP

## LOCATION AND NUMBERS OF ORDNANCE HUTS

FIRST EDITION

SCALE 1:2,500

933 000 Yds. E

934 000 Yds. E

735 000 Yds. N

735 000 Yds. N



734 300 Yds. N

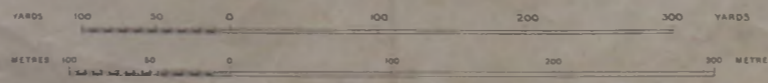
734 300 Yds. N

Geographical Section, General Staff No. 4466.  
Published by War Office 1943.

Buildings, Brick and Stone  
 " " Wood " Steel  
 " " Glass  
 " " REMOVED or Empty

Prefix A = AMMUNITION STOREHOUSE  
 PLAN NUMBER GENERAL STOREHOUSE

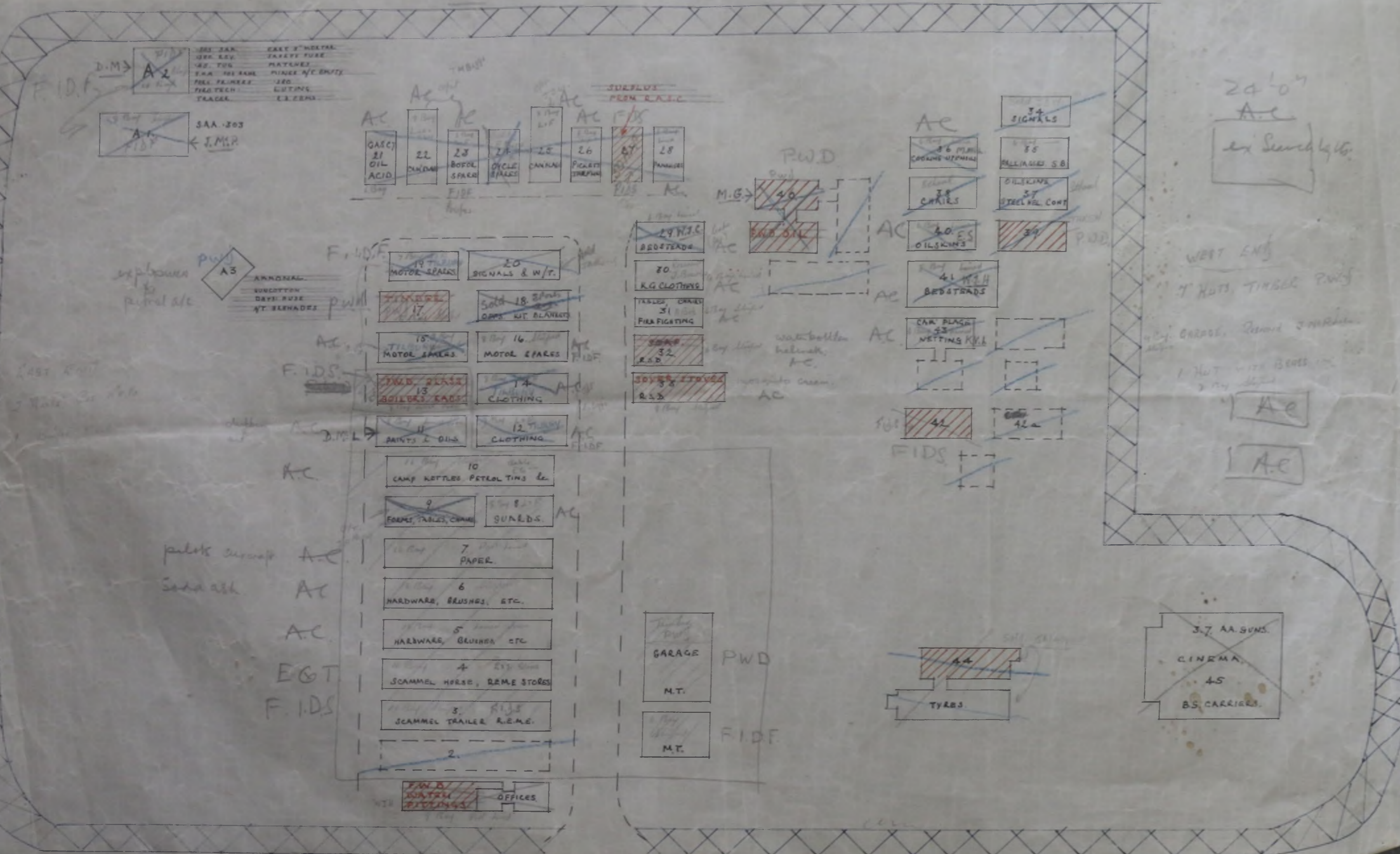
SCALE 1:2,500



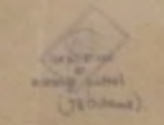
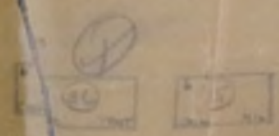
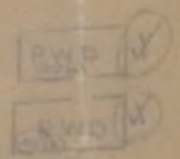
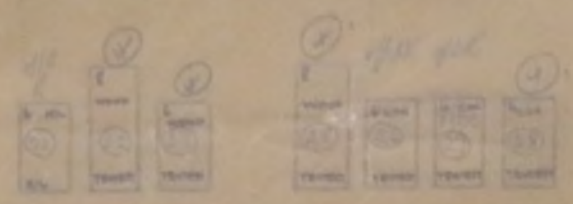
Surveyed and Drawn by No. 2. Topographical Section (14<sup>th</sup> Corps Fd. Svy.) Coy. Royal Engineers. 1943.  
 Photolithographed by O.S. 1943.  
 U.S. War Department Polyconic Projection (Southern Hemisphere)  
 Band V (South) Zone H.  
 Grid North is 00°41' East of True North  
 at the centre of this Sheet

934 000 Yds. E

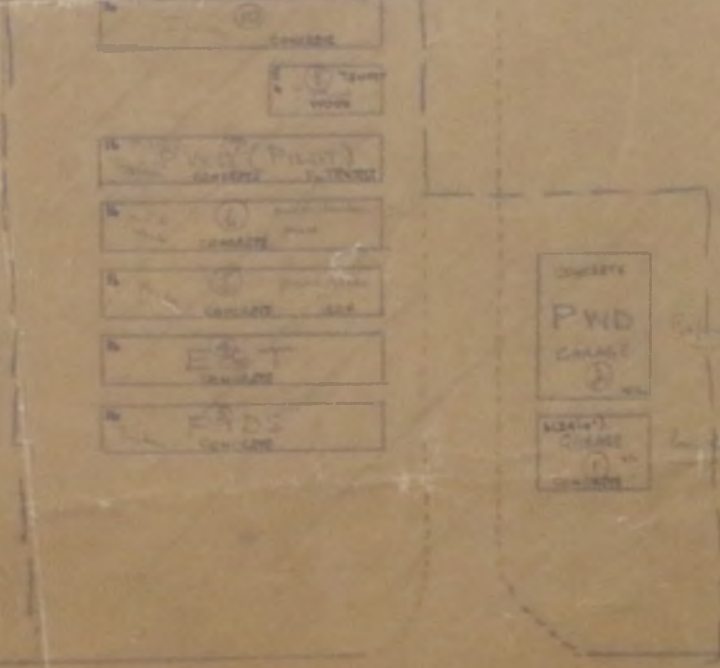
MAIN CAMP

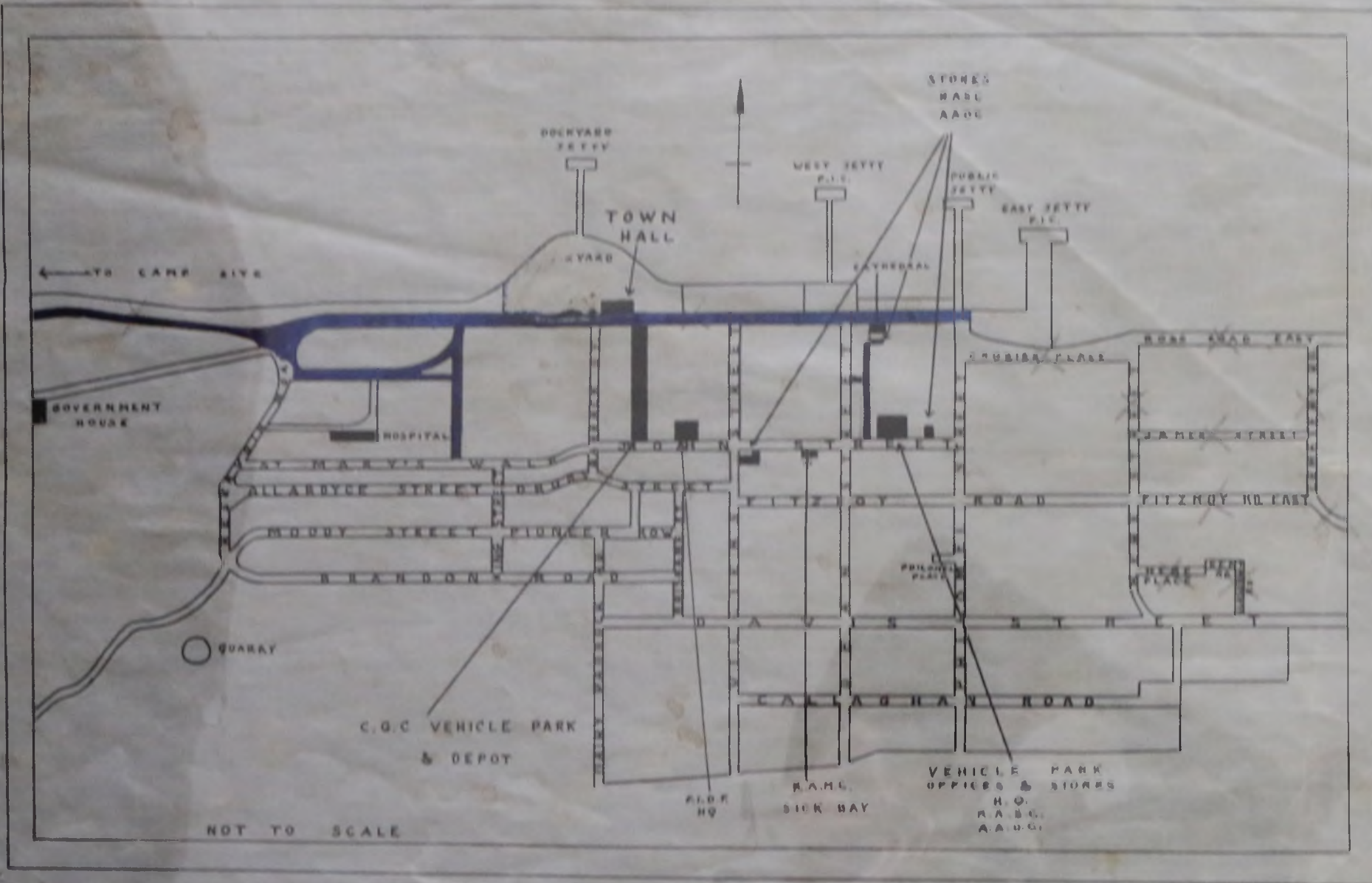


1-33/0110  
186 01287  
484 / 01154

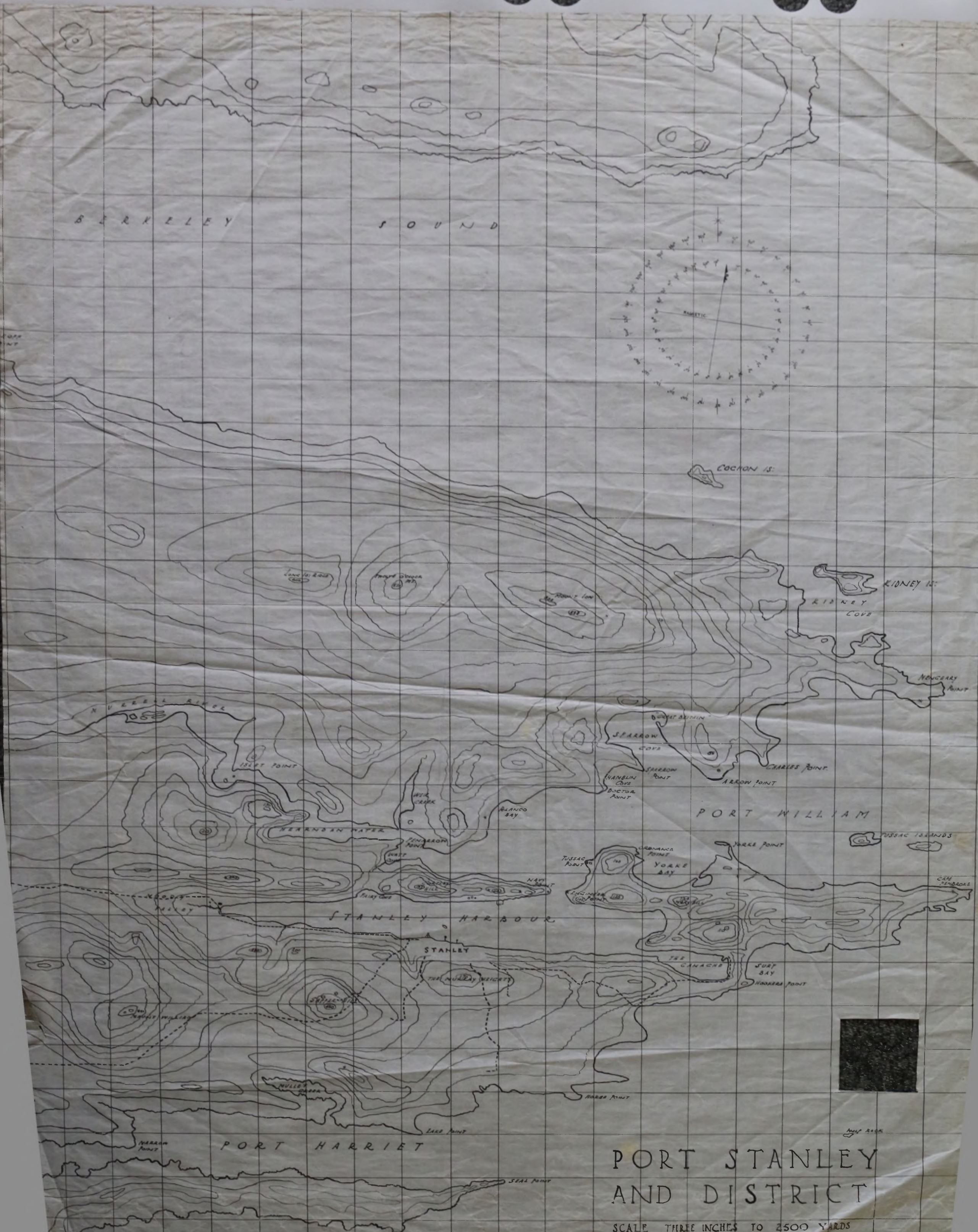


Legend  
① No. of days  
② No. of days  
③ No. of days  
④ No. of days









# PORT STANLEY AND DISTRICT

SCALE THREE INCHES TO 2500 YARDS  
TRACED FROM ADMIRALTY CHART 1618 BETWEEN HULL POINT AND KIDNEY ISLANDS. REMAINDER ENLARGED FROM OTHER CHARTS.

NOTE: THIS MAP IS A CONFIDENTIAL DOCUMENT AND IS NOT TO BE GIVEN TO CIVILIANS IN SHOWS AND MUST BE DESTROYED TO AVOID ITS CAPTURE AND ITS LOSS REPORTED.

# FALKLAND ISLANDS PORT STANLEY

FIRST EDITION

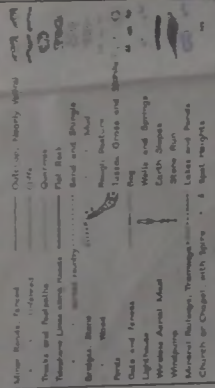


SCALE 1:25,000

SHEET 2

Geographical Section, General Staff, No. 4405  
Published by War Office, 1945

### CONVENTIONAL SIGNS



- (1) Road with sharp and double
- (2) Road with double
- (3) Road with single
- (4) Unimproved surface
- (5) Improved surface
- (6) Road with double and single
- (7) Double - single
- (8) Double - double
- (9) Single - double
- (10) Single - single
- (11) Single - F.S. (faint)
- (12) Single - F.S. (faint)
- (13) Single - F.S. (faint)
- (14) Single - F.S. (faint)

All Heights reduced to the level of Mean Low Water Springs  
U.S. War Department Polyconic Projection (Southern Hemisphere)  
Band V (South) Zone H

All Heights in Feet

SCALE 1:25,000

Contour Interval 50 Feet

Surveyed & Drawn by No. 2 Topographical Section,  
148 (Corps Fd. Svy.) Coy., Royal Engineers (1943)  
Heliographed by O.S. 1943

TO OWE A MAP REFERENCE

1. Contours are shown in brown, 100 feet of peak and 50 feet of valley.
2. The map is drawn to the contour interval of 50 feet.
3. Contours are shown in brown, 100 feet of peak and 50 feet of valley.
4. Contours are shown in brown, 100 feet of peak and 50 feet of valley.
5. Contours are shown in brown, 100 feet of peak and 50 feet of valley.
6. Contours are shown in brown, 100 feet of peak and 50 feet of valley.
7. Contours are shown in brown, 100 feet of peak and 50 feet of valley.
8. Contours are shown in brown, 100 feet of peak and 50 feet of valley.
9. Contours are shown in brown, 100 feet of peak and 50 feet of valley.
10. Contours are shown in brown, 100 feet of peak and 50 feet of valley.

Note: The area shown as rough pasture is liable to become boggy and treacherous after rain

LOCATION AND NUMBERS OF HUTS AT STANLEY CAMP.



- HUT No. 1 "DISCOVERY"
- 2 F.I.D.F.
- 3 EMPTY R.S.J. ROOM
- 4 EMPTY
- 5
- 6 F.I.D.F.
- 7 SOLD TO MCPHEE
- 8 E. & T.
- 9 SOYER BOILERS
- 10 TABLES
- 11 AGRICULTURE
- 12
- 13 SOAP
- 14 AMMO
- 15 IRON. P.W.D.
- 16 GUN STORES
- 17 GUN SKIDS
- 18 P.W.D. COAL
- 19 PLASTER OF PARIS
- 20 BREN CARRIERS
- 21 "EAGLE" STORES
- 22 P.W.D. TIMBER
- 23 P.W.D. MOTOR SPARES

C A L L A G H A N R O A D.