

# PHOTOGRAPH COLLECTIONS - JACK CAMERON ALBUM?\*

\* A note in the album says San Carlos March 4 5 /06; many of the photographs duplicate those in Jack Cameron's album [PC-008]

[PC-019]

This file contains descriptions of the photographs in the collection followed by the photographs.

DETAILS	DATE	B&W/ COLOUR	ORIGINAL/ SCAN	SIZE (CM)	MANAGEMENT CODE	PROVENANCE/ COPYRIGHT
Darwin		Sepia	Original	7.5 x 10	PC-019-0001	Cameron Family?/ JCNA
Port San Carlos old shearing shed with sheep and dogs in foreground		Sepia	Original	6.5 x 10	PC-019-0002	Cameron Family?/ JCNA
Girl sidesaddle on a horse		Sepia	Original	7.5 x 10	PC-019-0003	Cameron Family?/ JCNA
Fortuna		Sepia	Original	7.5 x 10	PC-019-0004	Cameron Family?/ JCNA
Portrait of six girls		Sepia	Original	10 x 7	PC-019-0005	Cameron Family?/ JCNA
Small child standing on a corner chair		Sepia	Original	9.5 x 7	PC-019-0006	Cameron Family?/ JCNA
Horses in a corral. Manager's House, Port San Carlos in background		Sepia	Original	5.5 x 8.5	PC-019-0007	Cameron Family?/ JCNA
Alec SMITH taming a colt in a corral. Port San Carlos Manager's House in background to right		Sepia	Original	5.5 x 8.5	PC-019-0008	Cameron Family?/ JCNA
Abner BERNTSEN and Alec SMITH colt taming		Sepia	Original	5.5 x 8	PC-019-0009	Cameron Family?/ JCNA
Abner BERNTSEN and Alec SMITH colt taming. Port San Carlos Manager's House in background to right		Sepia	Original	5.5 x 8.5	PC-019-0010	Cameron Family?/ JCNA
Abner BERNTSEN and Alec SMITH colt taming		Sepia	Original	5.5 x 8	PC-019-0011	Cameron Family?/ JCNA
Abner BERNTSEN colt taming		Sepia	Original	5.5 x 8.5	PC-019-0012	Cameron Family?/ JCNA
Abner BERNTSEN and Alec SMITH riding horses		Sepia	Original	5.5 x 8	PC-019-0013	Cameron Family?/ JCNA
Horse and sheep in paddock		Sepia	Original	5.5 x 8.5	PC-019-0014	Cameron Family?/ JCNA
Woman with a baby in a christening gown outside in the snow		Sepia	Original	8 x 4.5	PC-019-0015	Cameron Family?/ JCNA
Port San Carlos settlement		Sepia	Original	5.5 x 10	PC-019-0016	Cameron Family?/ JCNA
Man standing in front of a building		Sepia	Original	8 x 4.5	PC-019-0017	Cameron Family?/ JCNA
Inside of the old Manager's House, Port San Carlos		Sepia	Original	11.5 x 15.5	PC-019-0018	Cameron Family?/ JCNA
Cutter in Stanley Harbour. Two three-masted ships in background		Sepia	Original	5 x 8	PC-019-0019	Cameron Family?/ JCNA
Family group in shelter of a tent		Sepia	Original	5.5 x 8	PC-019-0020	Cameron Family?/ JCNA
Sheep in pens with five men standing behind gate		Sepia	Original	10 x 14.5	PC-019-0021	Cameron Family?/ JCNA
Men sorting sheep. House in far background		Sepia	Original	6 x 9.5	PC-019-0022	Cameron Family?/ JCNA
Man kneeling on ground with two saddled horses behind him		Sepia	Original	6 x 9.5	PC-019-0023	Cameron Family?/ JCNA
Sheep dip		Sepia	Original	10 x 14.5	PC-019-0024	Cameron Family?/ JCNA
Man, girl, boy and three dogs sitting in front of a rock		Sepia	Original	7.5 x 10.5	PC-019-0025	Cameron Family?/ JCNA
Man, girl, boy and three dogs sitting in front of a rock		Sepia	Original	7.5 x 10.5	PC-019-0026	Cameron Family?/ JCNA
Woman with three small children on swings		Sepia	Original	7 x 10	PC-019-0027	Cameron Family?/ JCNA
Three small girls sitting at a table inside		Sepia	Original	7.5 x 10.5	PC-019-0028	Cameron Family?/ JCNA
Port San Carlos old manager's house		Sepia	Original	7.5 x 10	PC-019-0029	Cameron Family?/ JCNA
Two boys rocking two small children on a dual rocking chair; small girl on a toy elephant		Sepia	Original	7.5 x 10.5	PC-019-0030	Cameron Family?/ JCNA
Small boy with dog behind him		Sepia	Original	8 x 5.5	PC-019-0031	Cameron Family?/ JCNA

DETAILS	DATE	B&W/ COLOUR	ORIGINAL/ SCAN	SIZE (CM)	MANAGEMENT CODE	PROVENANCE/ COPYRIGHT
Small girl on piebald horse		Sepia	Original	5 x 8	PC-019-0032	Cameron Family?/ JCNA
Small girl standing on ladder against a wall		Sepia	Original	8 x 5.5	PC-019-0033	Cameron Family?/ JCNA
Small boy in garden		Sepia	Original	7.5 x 4.5	PC-019-0034	Cameron Family?/ JCNA
Four small children on a seat in a garden		Sepia	Original	5.5 x 8	PC-019-0035	Cameron Family?/ JCNA
Small boy in garden		Sepia	Original	7.5 x 4.5	PC-019-0036	Cameron Family?/ JCNA
Three children on swings and a girl sitting in front		Sepia	Original	5.5 x 8.5	PC-019-0037	Cameron Family?/ JCNA
Three children in front of a fence (Charles Williams' store in Stanley?)		Sepia	Original	7.5 x 5	PC-019-0038	Cameron Family?/ JCNA
Two boys in front of a tent in a garden		Sepia	Original	5.5 x 8	PC-019-0039	Cameron Family?/ JCNA
Small girl on swing		Sepia	Original	8 x 6	PC-019-0040	Cameron Family?/ JCNA
Five vases of flowers on a table inside		Sepia	Original	10 x 12.5	PC-019-0041	Cameron Family?/ JCNA
Man at bottom of steps up to a building in winter. South America?		Sepia	Original	10 x 7	PC-019-0042	Cameron Family?/ JCNA
Two plants in pots inside		Sepia	Original	14.5 x 10	PC-019-0043	Cameron Family?/ JCNA
Troop of horses		Sepia	Original	6 x 10	PC-019-0044	Cameron Family?/ JCNA
Port San Carlos settlement from above the harbour?		Sepia	Original	6.5 x 10	PC-019-0045	Cameron Family?/ JCNA
Stanley circa 1901 - Fitzroy Road East looking north west	1901c	Sepia	Original	6 x 12	PC-019-0046	Cameron Family?/ JCNA
Malvina House in winter		Sepia	Original	8.5 x 11.5	PC-019-0047	Cameron Family?/ JCNA
Government House		Sepia	Original	7 x 12	PC-019-0048	Cameron Family?/ JCNA
Bluff HOLLEN on a horse		Sepia	Original	7.5 x 10	PC-019-0049	Cameron Family?/ JCNA
Group of six children with nursemaid		Sepia	Original	7.5 x 10	PC-019-0050	Cameron Family?/ JCNA
Man kneeling on ground with two saddled horses behind him (same as PC-019-0023)		Sepia	Original	7 x 10	PC-019-0051	Cameron Family?/ JCNA
Sheep going through a race; four men behind fence		Sepia	Original	7.5 x 9.5	PC-019-0052	Cameron Family?/ JCNA
Fortuna in harbour		Sepia	Original	6.5 x 10	PC-019-0053	Cameron Family?/ JCNA
Very faded. Dogs and ?		Sepia	Original	7.5 x 10	PC-019-0054	Cameron Family?/ JCNA
Sheep in paddock with shed behind		Sepia	Original	4.5 x 8	PC-019-0055	Cameron Family?/ JCNA
View from a ship with small boats in the harbour		Sepia	Original	6 x 9	PC-019-0056	Cameron Family?/ JCNA
People on the deck of a ship		Sepia	Original	5.5 x 8	PC-019-0057	Cameron Family?/ JCNA
Emma moored at San Carlos. Arrived 1 May 1900 at San Carlos from Gallegos with horses. Left 2 May 1900	1900 May 1/2	Sepia	Original	11.5 x 16	PC-019-0058	Cameron Family?/ JCNA
People in a grandstand		Sepia	Original	5.5 x 8	PC-019-0059	Cameron Family?/ JCNA
Street view (not Falkland Islands)		Sepia	Original	5.5 x 9	PC-019-0060	Cameron Family?/ JCNA
Portrait of a baby		Sepia	Original	8.5 x 6	PC-019-0061	Cameron Family?/ JCNA
Portrait of a baby in a highchair		Sepia	Original	6.5 x 6.5	PC-019-0062	Cameron Family?/ JCNA
Portrait of small girl with bow in her hair - duplicate of PC-008-0006		Sepia	Original	8 x 6	PC-019-0063	Cameron Family?/ JCNA
Four small children outside a house with a woman		Sepia	Original	8 x 6	PC-019-0064	Cameron Family?/ JCNA
Two small girls outside - duplicate of PC-008-0008		Sepia	Original	5 x 5	PC-019-0065	Cameron Family?/ JCNA
Woman speaking to small child in a bed		Sepia	Original	10 x 7.5	PC-019-0066	Cameron Family?/ JCNA
Studio portrait of two little girls and a baby (Jack CAMERON's children?) - duplicate of PC-008-0068		Sepia	Original	6 x 8.5	PC-019-0067	Cameron Family?/ JCNA
Group of children and women outside; fence and house behind		Sepia	Original	6 x 8	PC-019-0068	Cameron Family?/ JCNA

DETAILS	DATE	B&W/ COLOUR	ORIGINAL/ SCAN	SIZE (CM)	MANAGEMENT CODE	PROVENANCE/ COPYRIGHT
John BLACKLEY? standing on a deck		Sepia	Original	14.5 x 10	PC-019-0069	Cameron Family?/ JCNA
Steam ship at anchor		Sepia	Original	5 x 9	PC-019-0070	Cameron Family?/ JCNA
Port San Carlos manager's house		Sepia	Original	5.5 x 8.5	PC-019-0071	Cameron Family?/ JCNA
Emma moored at San Carlos. Arrived 1 May 1900 at San Carlos from Gallegos with horses. Left 2 May 1900	1900 May 1/2	Sepia	Original	10 x 14.5	PC-019-0072	Cameron Family?/ JCNA
John and Katherine BLACKLEY, San Carlos River		Sepia	Original	14 x 10	PC-019-0073	Cameron Family?/ JCNA
Very faded. Group of men outside a house		Sepia	Original	5.5 x 8	PC-019-0074	Cameron Family?/ JCNA
Man holding reins of a horse with a small dog on the saddle. Stone building in background (Johns Street?)		Sepia	Original	5.5 x 7.5	PC-019-0075	Cameron Family?/ JCNA
Sheep in pens with woolshed in background		Sepia	Original	6.5 x 10	PC-019-0076	Cameron Family?/ JCNA
Abner BERNTSEN and Alec SMITH riding horses - duplicate of PC-008-0046		Sepia	Original	5 x 8	PC-019-0077	Cameron Family?/ JCNA
Group of people and horses. Camp sports?		Sepia	Original	5.5 x 8	PC-019-0078	Cameron Family?/ JCNA
A cape jutting out to sea		Sepia	Original	6 x 8.5	PC-019-0079	Cameron Family?/ JCNA
Port San Carlos circa 1890s. Old cookhouse, old shearing shed	1890s c	Sepia	Original	10 x 14.5	PC-019-0080	Cameron Family?/ JCNA
Government House in snow from west. Government House Jetty		Sepia	Original	6.5 x 10	PC-019-0081	Cameron Family?/ JCNA
Dual pitch house with drystone wall behind and stoney ridge in background. Palenque in foreground. Same house as in PC-008-0061		Sepia	Original	7 x 9.5	PC-019-0082	Cameron Family?/ JCNA
Port San Carlos circa 1890s. Old cookhouse, old shearing shed, old jetty		Sepia	Original	10 x 14.5	PC-019-0083	Cameron Family?/ JCNA
Building at the top of steps, snow around. Not Falkland Islands		Sepia	Original	7.5 x 10	PC-019-0084	Cameron Family?/ JCNA
Building at the top of steps, snow around. Not Falkland Islands		Sepia	Original	7.5 x 10	PC-019-0085	Cameron Family?/ JCNA
Man sitting on chair outside a building		Sepia	Original	10.5 x 7.5	PC-019-0086	Cameron Family?/ JCNA
Girl sitting inside with a book		Sepia	Original	10.5 x 7.5	PC-019-0087	Cameron Family?/ JCNA
Stone building. Not Falkland Islands		Sepia	Original	7.5 x 10	PC-019-0088	Cameron Family?/ JCNA
Building in gully with river going past and snow. Not Falkland Islands		Sepia	Original	7.5 x 10	PC-019-0089	Cameron Family?/ JCNA

JCNA

PC019

PC-019-0001



Darwin

PC-019-0002



Psc old shearing shed

PC-019-0003



PC-019-0005



PC-019-0004



• Forkins

PC-019-0006



PC-019-0007



PC-019-0008



PC-019-0009



PC-019-0010



• Colt taming

PC-019-0011



• Abner Berntsen Alec Smith

PC-019-0012



Abner Berntsen

PC-019-0013



AB A C

PC-019-0014



PC-019-0015



PC-019-0016



PC-019-0017



PC-019-0018



Old manager's house PSC

PC-019-0019



PC-019-0020



PC-019-0021



PC-019-0022



PC-019-0023



PC-019-0024





PC-019-0025



PC-019-0026



PC-019-0027



PC-019-0028



PC-019-0029



PSC old house

PC-019-0030



PC-019-0031



PC-019-0032



PC-019-0033



PC-019-0034



PC-019-0035



PC-019-0036



PC-019-0037



PC-019-0038



PC-019-0040



PC-019-0039



PC-019-0041



PC-019-0042



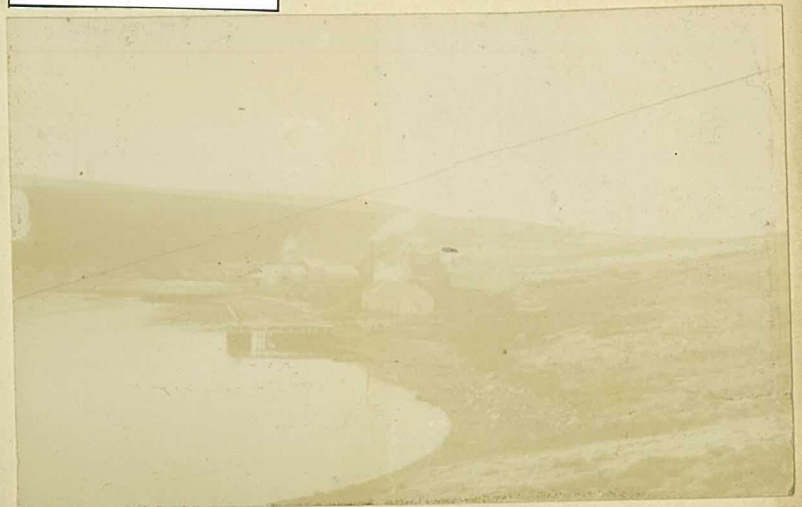
PC-019-0043



PC-019-0044



PC-019-0045



PC-019-0046



Stanley Circo 1901 - Fitzroy Road East

PC-019-0047



Moluno House

PC-019-0048



CH

PC-019-0049



Bluff Hollen

PC-019-0050



PC-019-0051



PC-019-0052

PC-019-0053



Fortuno?

PC-019-0054



PC-019-0055



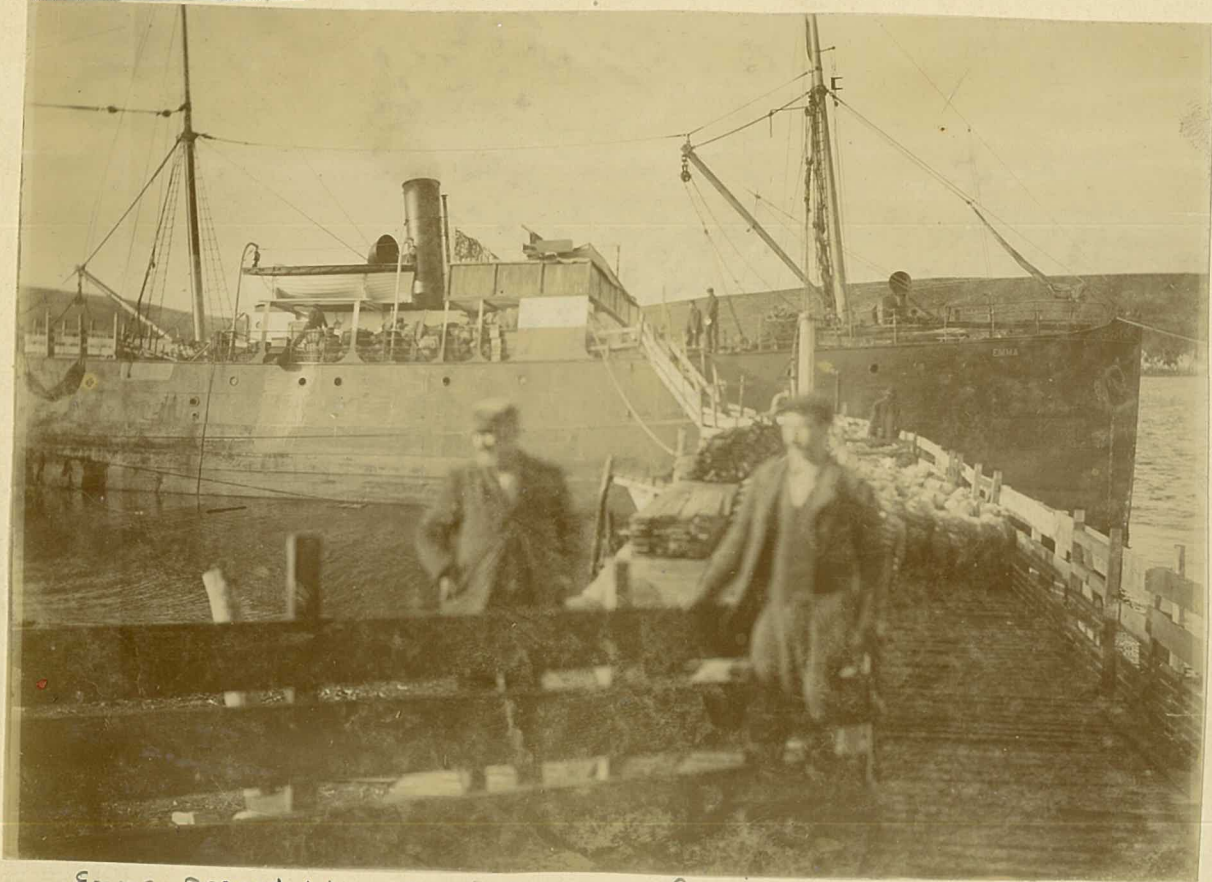
PC-019-0056



PC-019-0057

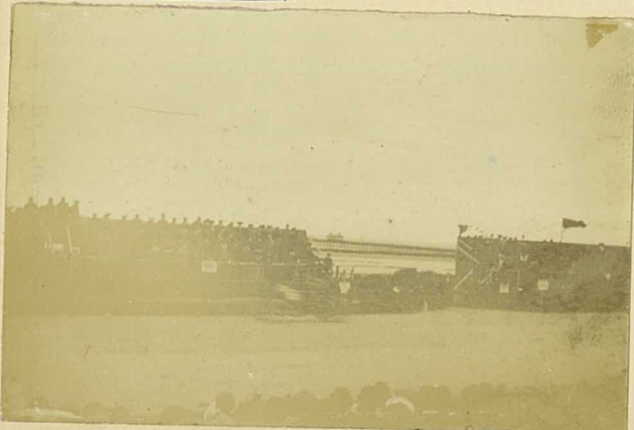


PC-019-0058



Emma. Arrived 1 May 1900 at San Carlos from Gallegos with horses. Left 2 May.

PC-019-0059



PC-019-0060



Jack Cameron's children?

PC-019-0061



PC-019-0062



PC-019-0063



PC-019-0064



PC-019-0065



PC-019-0066



PC-019-0067



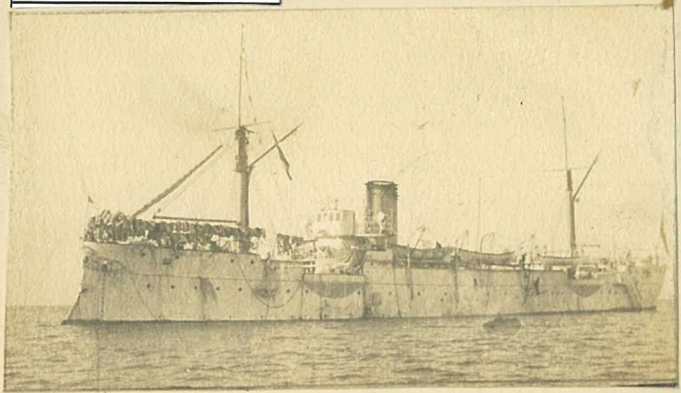
PC-019-0068



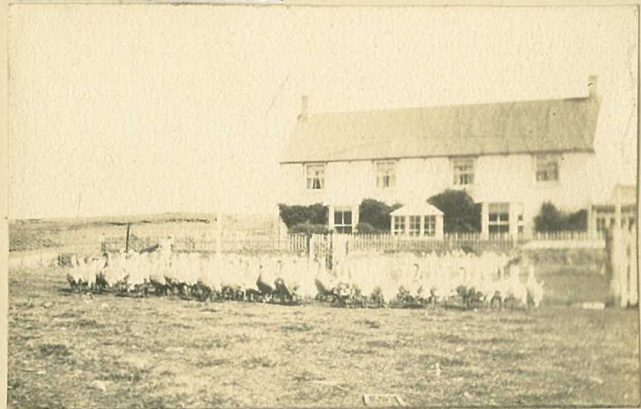
PC-019-0069



PC-019-0070



PC-019-0071



Port San Carlos Manager's house

PC-019-0072



Emma



PC-019-0073

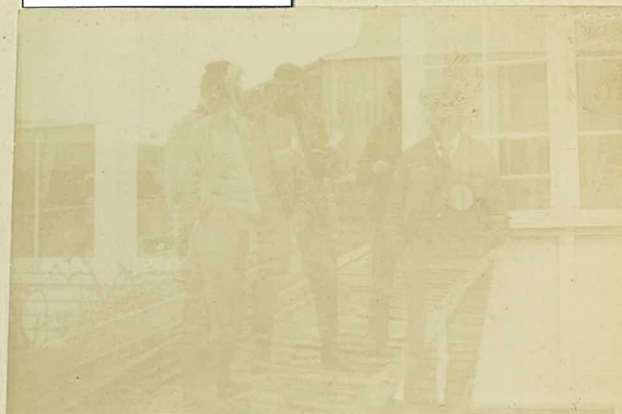


John & Katherine Blackley, San Carlos River

PC-019-0076



PC-019-0074



PC-019-0075



PC-019-0077



PC-019-0079



PC-019-0078



PC-019-0080



Port San Carlos

PC-019-0082

PC-019-0081



Government House



PC-019-0083



Port San Carlos  
c 1890s

old coolhouse  
old shearing shed  
old jetty



PC-019-0084



PC-019-0085



PC-019-0086



PC-019-0087



PC-019-0088



PC-019-0089